

HCP PUMP

Model	POND-S250
Series	POND
Frequency	50
Phase	1
Discharge	32 mm



Motor Data

Input Power—P1	0.49 kW
Rated Power—P2	250W kW
Insulation Class	B
Voltage Range	220~240V
Max. Starts Per Hour	10
Rated Speed (rpm)	
Start Method	CAPACITOR
Ingress Protection Code	CAPACITOR
Explosion-Proof	IP68

Technology

Impeller Type	Vortex
Mechanical Seal	Single
Lubricating Oil VG32	65 CC
Solid Passage	4 mm
Cooling Type	Self-cooling

Material

Motor Frame	SUS316
Shaft	SUS410
Casing	PP
Impeller	PA
Mechanical Seal	CA/CE
Cable	SJTW,H05RN-F
Upper and Lower Bearing	6200ZZ,6201ZZ

Liquid

Maximum Ambient Temperature	0~40°C
Maximum Installation Depth	10 m
Highest Liquid Temperature	40 °C
Liquid Transported	Fresh Water

Others

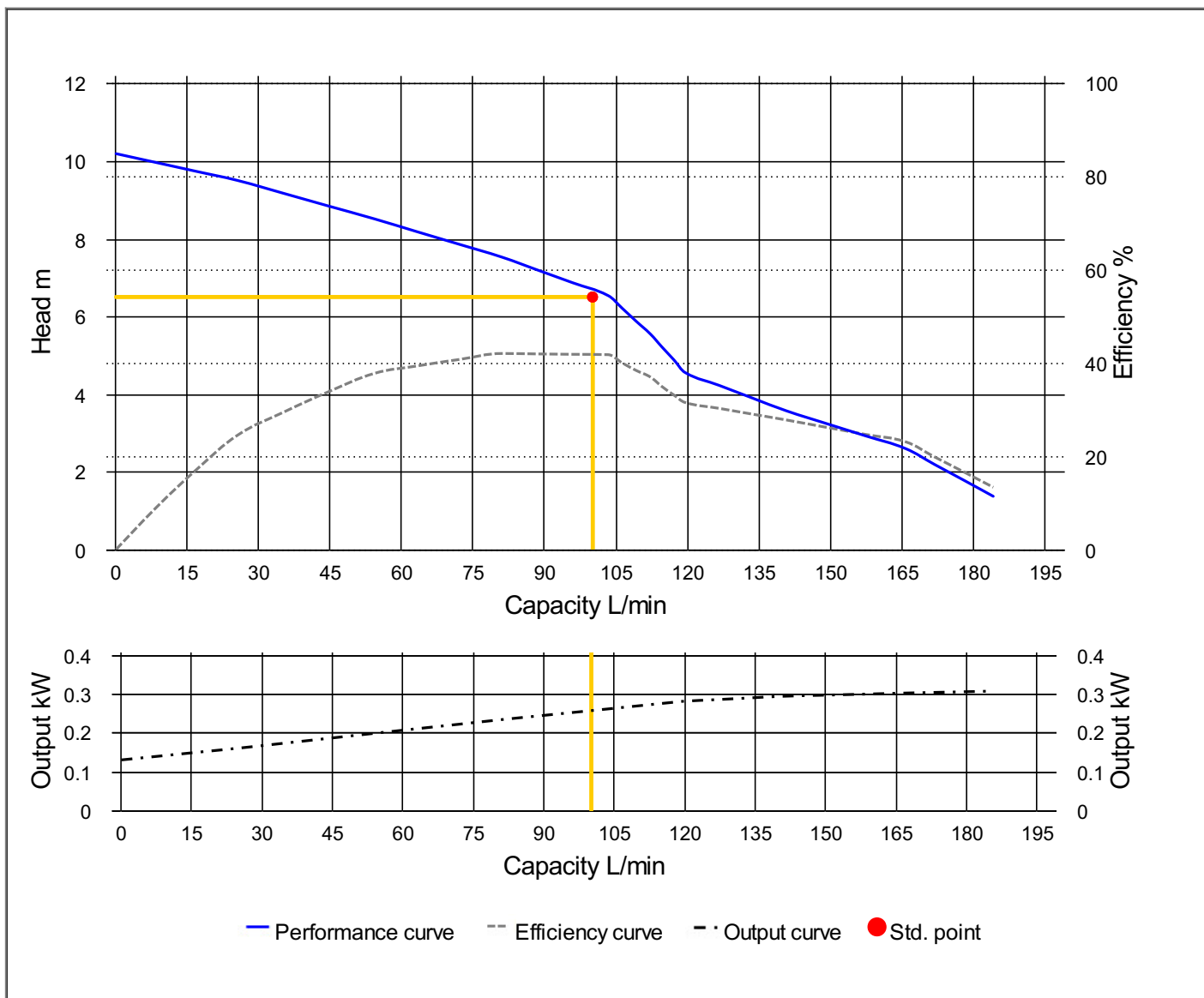
Protection Device	Motor Thermal Protector
Moisture Sensor	



HCP PUMP

PUMP PERFORMANCE CURVES

Model	POND-S250	File NO.	20201125021317
Frequency	50 Hz	Ver NO.	202003060911
Discharge	1 1/4" / 32 mm	REFERENCE SPECIFICATION	
Output	0.33 HP / 0.25 kW	Output	0.26 kW
Std. Head	6.5 m	Efficiency	41.8 %
Std. Capacity	100 L/min		
Phase / Volt	1 Ø / 220 V		
Rated Current	2.20 A		
Pole / rpm	2 P / rpm		
Start Method	CAPACITOR		
Insulation Class	B		

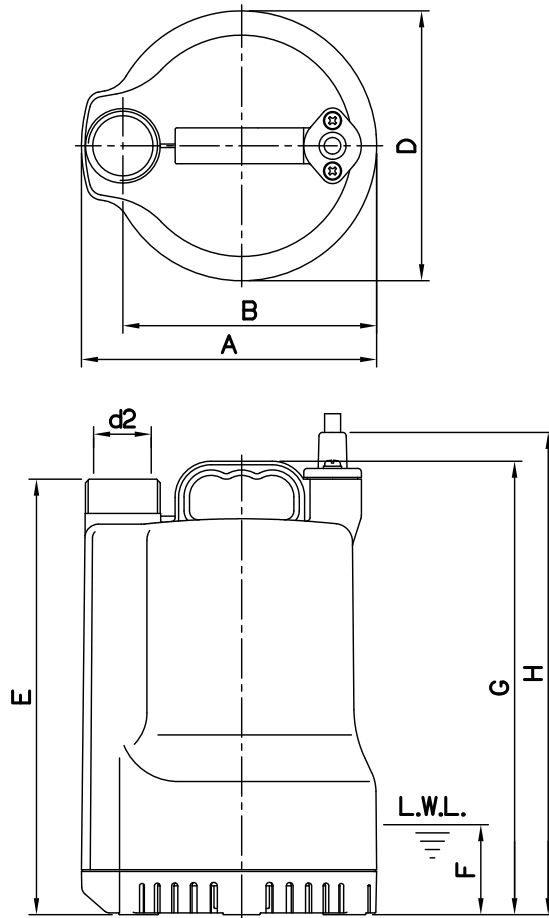


DIMENSIONS

NO: SFPD0203012-00

MODEL: POND-S250

1Ø



Pump	
Male	Thread
PF	

Dimensions—mm								Weight:kg	
Model	d2	A	B	D	E	F	G	H	WT1
POND-S250	32	164	141	150	242	50	252	268	4.1

Dimensions—inch								Weight:lb	
Model	d2	A	B	D	E	F	G	H	WT1
POND-S250	1¼	6⅞	5⅝	5⅞	9½	1⅞	9⅝	10⅞	9

L.W.L.:Lowest Running Water Level

WT1:Pump Weight(Without Cable)

