

HCP PUMP

Model	POND-100A
Series	POND
Frequency	50
Phase	1
Discharge	25 mm



Motor Data

Input Power—P1	0.2 kW
Rated Power—P2	100W kW
Insulation Class	B
Voltage Range	220~240V
Max. Starts Per Hour	10
Rated Speed (rpm)	
Start Method	CAPACITOR
Ingress Protection Code	CAPACITOR
Explosion-Proof	IP68

Technology

Impeller Type	Vortex
Mechanical Seal	Single
Lubricating Oil VG32	40 CC
Solid Passage	4 mm
Cooling Type	Self-cooling

Material

Motor Frame	ADC12
Shaft	SUS410
Casing	ASA
Impeller	ABS
Mechanical Seal	CA/CE
Cable	SJTW,H05RN-F
Upper and Lower Bearing	608ZZ,6200ZZ

Liquid

Maximum Ambient Temperature	0~40°C
Maximum Installation Depth	20 m
Highest Liquid Temperature	40 °C
Liquid Transported	Fresh Water

Others

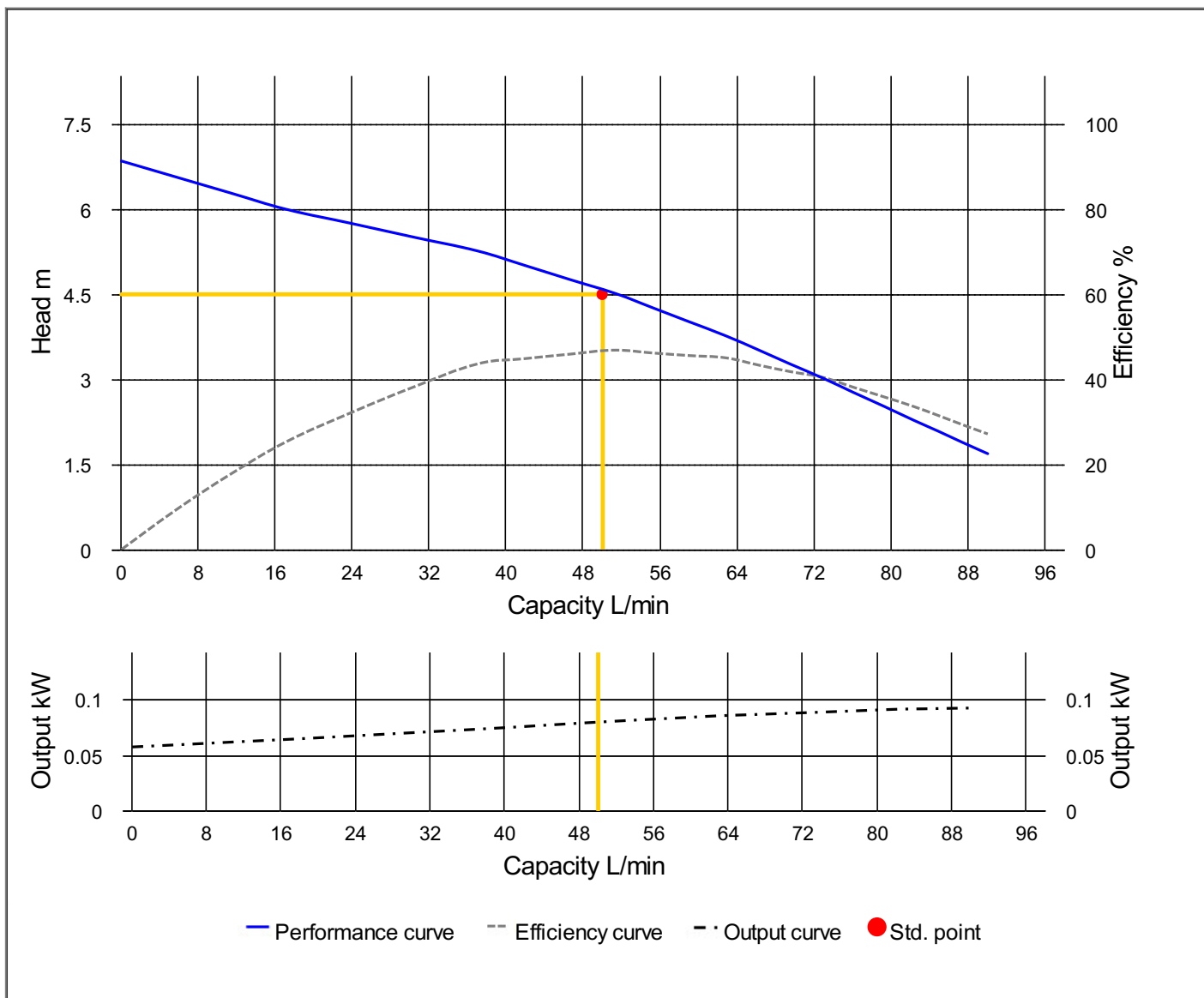
Protection Device	Motor Thermal Protector
Moisture Sensor	

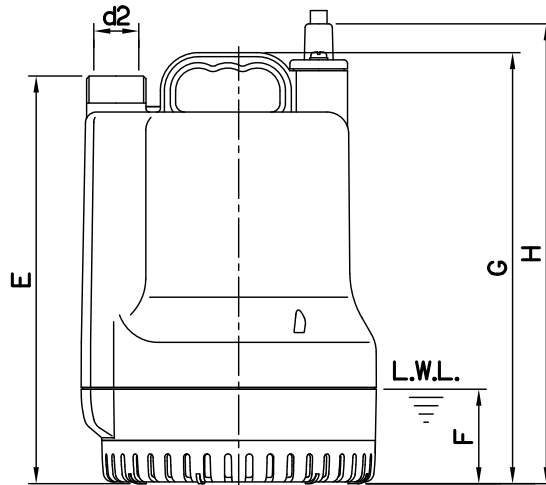
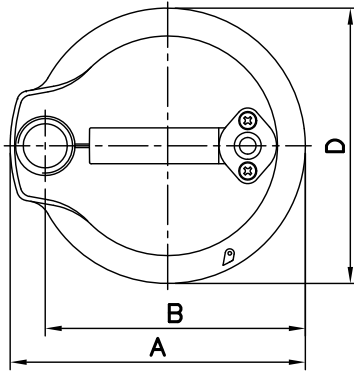


HCP PUMP

PUMP PERFORMANCE CURVES

Model	POND-100A	File NO.	20201125014756
Frequency	50 Hz	Ver NO.	202003060911
Discharge	1" / 25 mm	REFERENCE SPECIFICATION	
Output	0.14 HP / 0.1 kW	Output	0.08 kW
Std. Head	4.5 m	Efficiency	46.7 %
Std. Capacity	50 L/min		
Phase / Volt	1 Ø / 220 V		
Rated Current	1.10 A		
Pole / rpm	2 P / rpm		
Start Method	CAPACITOR		
Insulation Class	B		





Pump	
Male	Thread
PF	

Dimensions-mm								Weight:kg	
Model	d2	A	B	D	E	F	G	H	WT1
POND-100A	25	164	145	153	227	50	240	256	4
POND-150A	25	164	145	153	227	50	240	256	4.4

Dimensions-inch								Weight:lb	
Model	d2	A	B	D	E	F	G	H	WT1
POND-100A	1	6 ⁷ / ₁₆	5 ¹¹ / ₁₆	6	8 ¹⁵ / ₁₆	1 ¹⁵ / ₁₆	9 ⁷ / ₁₆	10 ¹ / ₁₆	9
POND-150A	1	6 ⁷ / ₁₆	5 ¹¹ / ₁₆	6	8 ¹⁵ / ₁₆	1 ¹⁵ / ₁₆	9 ⁷ / ₁₆	10 ¹ / ₁₆	10

L.W.L.:Lowest Running Water Level

WT1:Pump Weight(Without Cable)

