
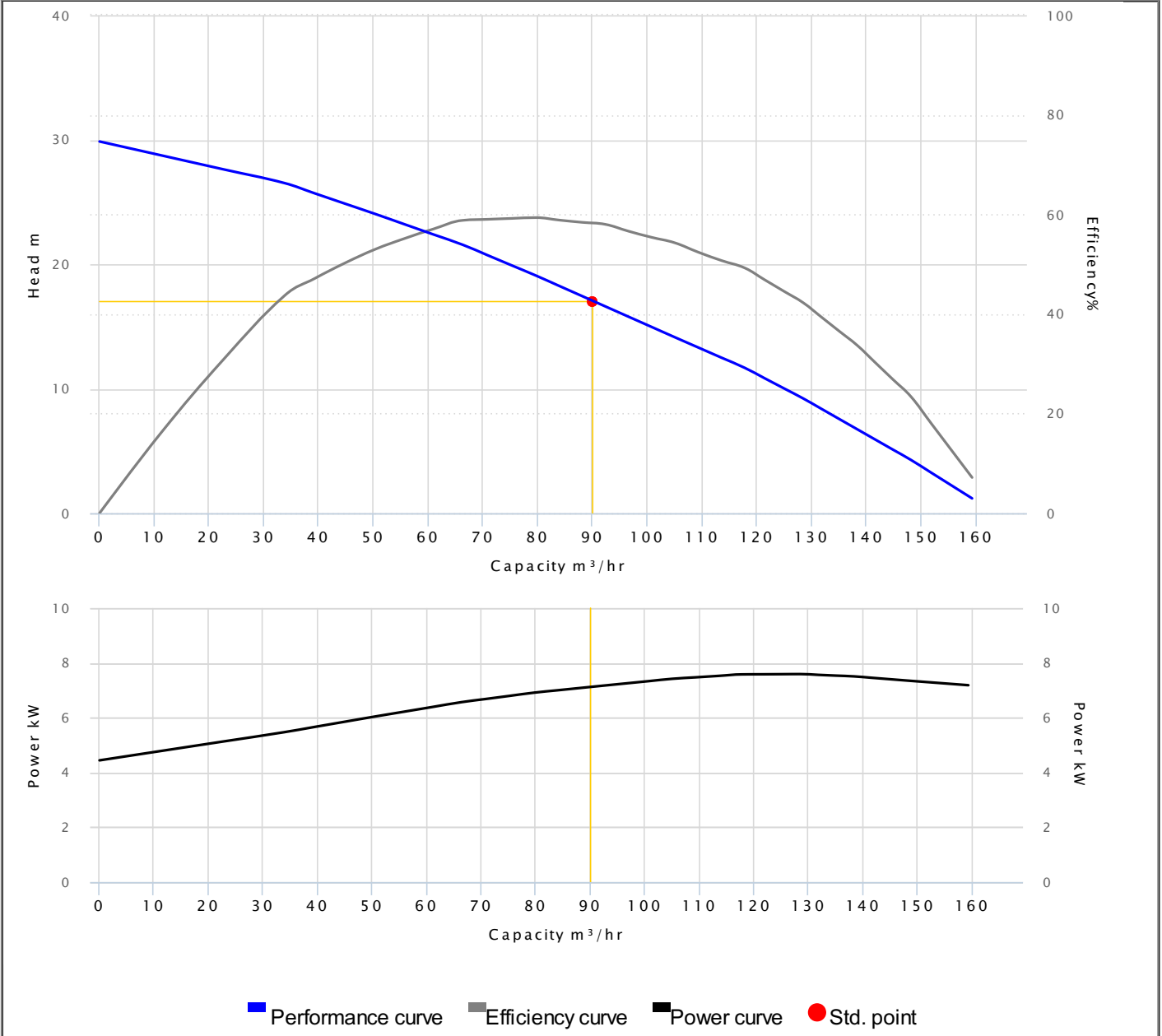




HCP PUMP

PUMP PERFORMANCE CURVES

Model	IC-610		
Frequency	50 Hz		
Discharge	6" / 150 mm		
Power	10 HP / 7.5 kW		
Std. Head	17 m		
Std. Capacity	90 m ³ /hr		
Phase/Volt	3 Ø / 380 V		
Rated Current	16.00 A		
rpm	2 P / 2850 rpm		
Start Method	DIRECT		
Insulation Class	H	Efficiency	58.2 %
Solid Passage	10 mm	Output	7.13 kW

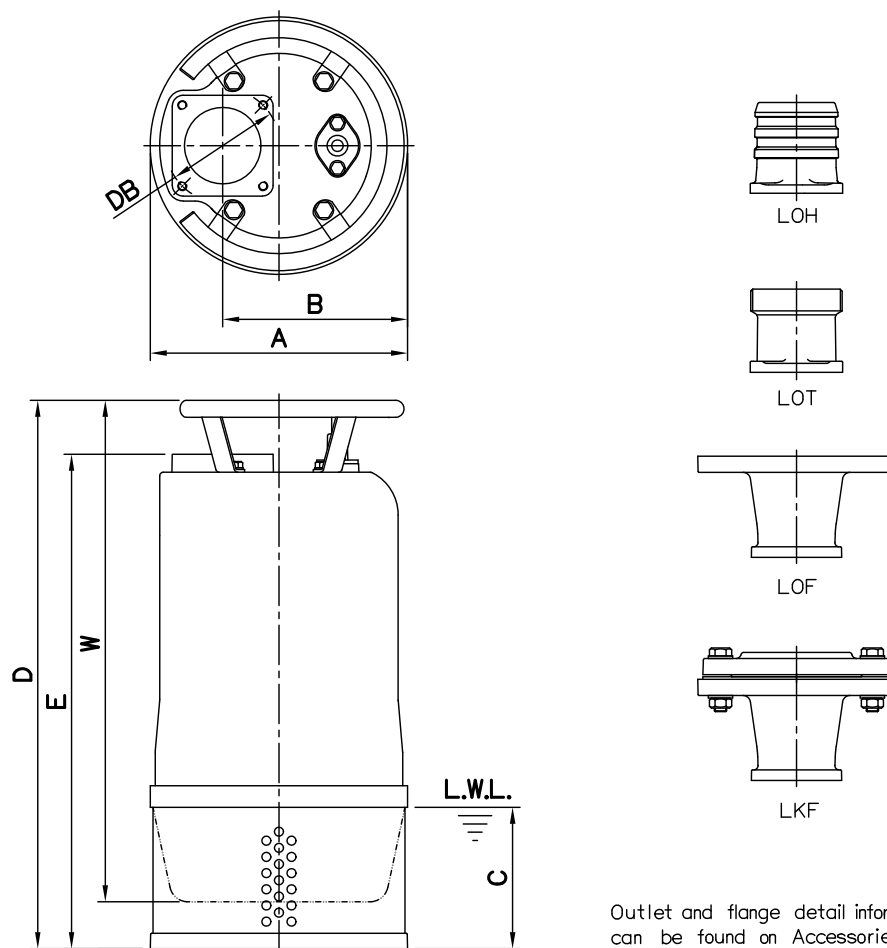


DIMENSIONS

NO: S4IC0275030-00

MODEL: IC-48 / 68 / 410 / 610

50Hz 3Ø



Outlet and flange detail information can be found on Accessories section.

Dimensions-mm

Weight:kg

Model	A	B	C	D	E	W	DB	WT1	Optional Outlet Accessories			
									LOH	LOT	LOF	LKF
IC-48	286	206	130	610	550	549	127	75	LOH4-127	LOT4-127	LOF4-175-190*127	LKF4-175*127
IC-410	286	206	130	610	550	549	127	80	LOH4-127	LOT4-127	LOF4-175-190*127	LKF4-175*127
IC-68	286	206	130	610	550	549	127	78	LOH6-127	LOT6-127	LOF6-240*127	LKF6-240*127
IC-610	286	206	130	610	550	549	127	81	LOH6-127	LOT6-127	LOF6-240*127	LKF6-240*127

Dimensions-inch

Weight:lb

Model	A	B	C	D	E	W	DB	WT1	Optional Outlet Accessories			
									LOH	LOT	LOF	LKF
IC-48	11¼	8½	5½	24	21⅝	7⅞	5	165	LOH4-127	LOT4-127	LOF4-175-190*127	LKF4-175*127
IC-410	11¼	8½	5½	24	21⅝	7⅞	5	176	LOH4-127	LOT4-127	LOF4-175-190*127	LKF4-175*127
IC-68	11¼	8½	5½	24	21⅝	7⅞	5	172	LOH6-127	LOT6-127	LOF6-240*127	LKF6-240*127
IC-610	11¼	8½	5½	24	21⅝	7⅞	5	179	LOH6-127	LOT6-127	LOF6-240*127	LKF6-240*127

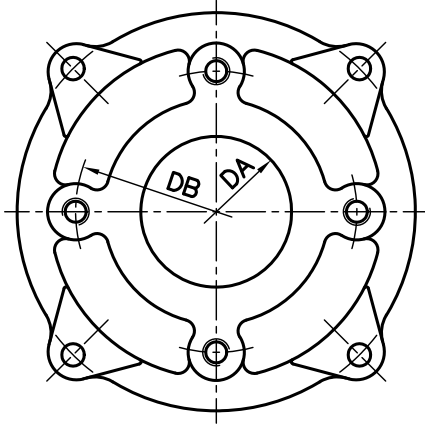
L.W.L.:Lowest Running Water Level

WT1:Pump Weight(Without Cable)
W is the dimension from handle to casing cover.

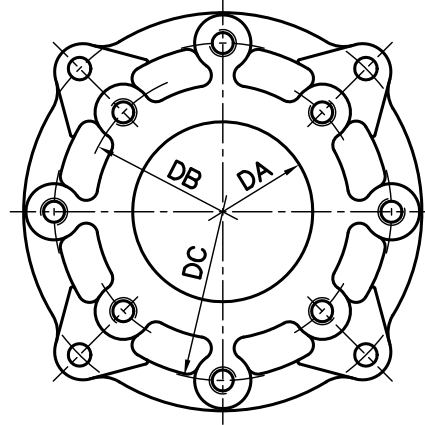
DIMENSIONS

NO: SOIC0000001-00

MODEL: Casing cover



IC-215,IC-32B,IC-33B,IC-46B
IC-48,IC-410,IC-68,IC-610



IC-43B,IC-45B

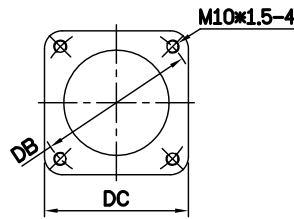
Application Model	Dimensions-mm			Dimensions-inch			Drilling
	DA	DB	DC	DA	DB	DC	
IC-215	50	100		2	4		M10
IC-32B	67	125		2 ⁵ / ₈	5		M12
IC-33B	67	125		2 ⁵ / ₈	5		M12
IC-43B	80	125	150	3	5	6	M12
IC-45B	80	125	150	3	5	6	M12
IC-46B	90	150		3 ⁹ / ₁₆	6		M12
IC-48	87	150		3 ⁷ / ₁₆	6		M12
IC-410	87	150		3 ⁷ / ₁₆	6		M12
IC-68	97	175		3 ¹³ / ₁₆	7		M12
IC-610	97	175		3 ¹³ / ₁₆	7		M12

DIMENSIONS

NO: SOIC0000000-00

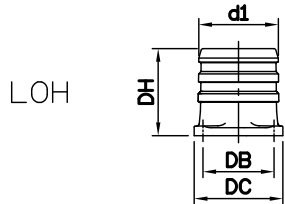
MODEL: Outlet (4"~6")

OUTLET CONNECTION

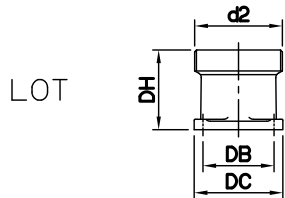


Model	mm		inch	
	DB	DC	DB	DC
5.5~7.5kW	127	112	5	4 7/16

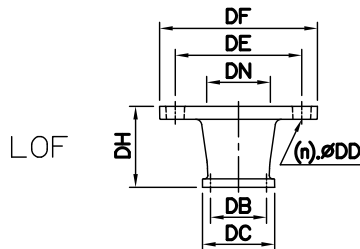
OPTIONAL OUTLET ACCESSORIES



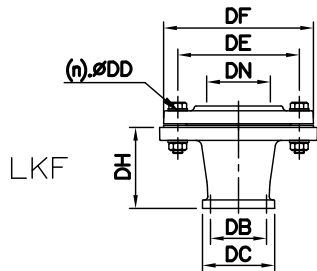
LOH	Dimensions-mm				kg	Dimensions-inch				lb
	d1	DB	DC	DH		Weight	d1	DB	DC	
LOH4-127	100	127	112	110	3	4	5	4 7/16	4 5/16	7
LOH6-127	150	127	112	172	5	6	5	4 7/16	6 3/4	11



LOT	Dimensions-mm				kg	Dimensions-inch				lb	Thread Available		
	d2	DB	DC	DH		Weight	d2	DB	DC		DH	Weight	PF
LOT4-127	100	127	112	85	2	4	5	4 7/16	3 3/8	4	PF	PT	NPT
LOT6-127	150	127	112	140	4	6	5	4 7/16	5 1/2	9	PF	PT	NPT



LOF	Dimensions-mm								kg	Dimensions-inch								lb	(n)QTY
	DN	DB	DC	DD	DE	DF	DH	Weight		DN	DB	DC	DD	DE	DF	DH	Weight		
LOF4-175-190*127	100	127	112	19	175~190	225	110	10	4	5	4 7/16	3/4	6 7/8~7 1/2	8 3/8	4 5/16	22	8		
LOF6-240*127	150	127	112	23	240	280	140	14	6	5	4 7/16	7/8	9 1/16	11	5 1/2	31	8		



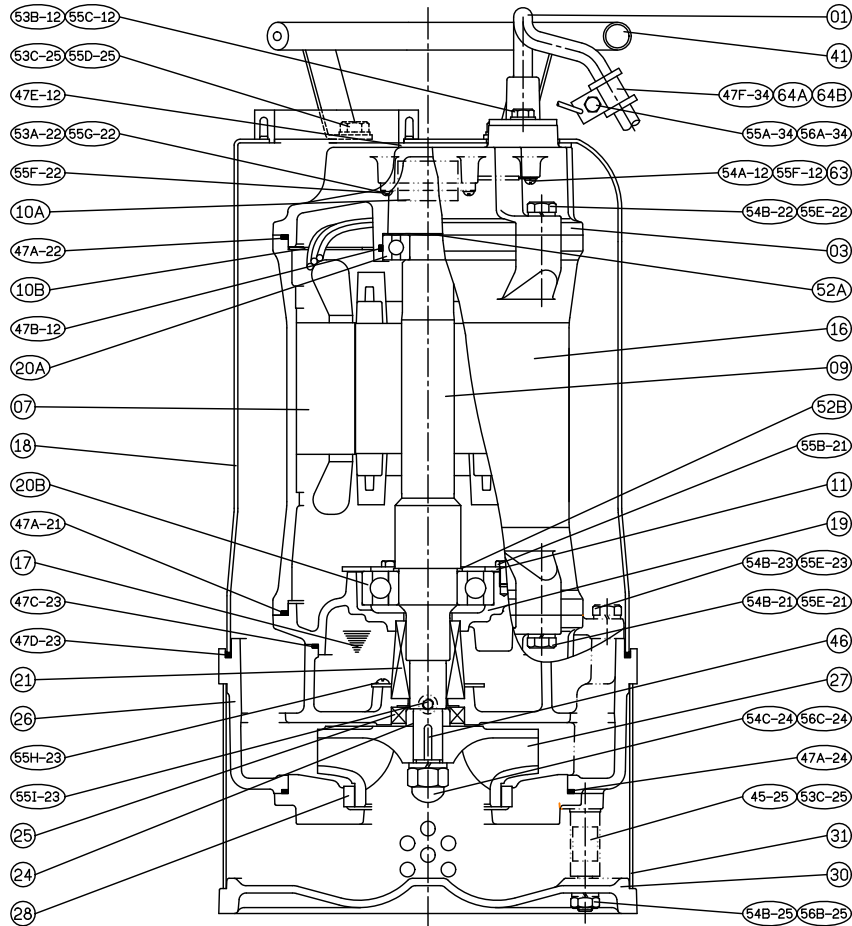
LKF	Dimensions-mm								kg	Dimensions-inch								lb	(n)QTY	Thread Available	
	DN	DB	DC	DD	DE	DF	DH	Weight		DN	DB	DC	DD	DE	DF	DH	Weight			PT	NPT
LKF4-175*127	100	127	112	15	175	210	110	10	4	5	4 7/16	9/16	6 7/8	8 1/4	4 5/16	22	8	PT	NPT		
LKF6-240*127	150	127	112	23	240	280	140	20	6	5	4 7/16	7/8	9 1/16	11	5 1/2	44	8	PT	NPT		

SECTIONAL VIEWS

NO: 04IC0275030-0

MODEL: IC-48 / 68 / 410 / 610

3Ø



No.	Part name	Material	QTY	Remark
01	Cable		1	
03	Upper cover	FC200	1	
07	Stator		1	
09	Shaft end	SUS304	1	
10A	Auto-cut Protector		1	
10B	Protective Plate		1	
11	Bearing fixer	SPCC	1	
16	Motor frame	FC200	1	
17	Lubricant			
18	Outer cover	SUS304	1	
19	Bearing bracket	FC200	1	
20A	Bearing		1	
20B	Bearing		1	

No.	Part name	Material	QTY	Remark
21	M.seal	CA / CE & SIC / SIC	1	
24	Oil seal bush	SUS403	1	
25	Oil seal	NBR	1	
26	Casing	FC200	1	
27	Impeller	Chrome steel	1	
28	Casing cover	FC200	1	
	+Wear ring	Chrome steel	1	
30	Footing	FCD450	1	
31	Strainer	SUS304	1	
41	Handle	SUS304	1	
46	Impeller key	SUS304	1	
47	Packing			