
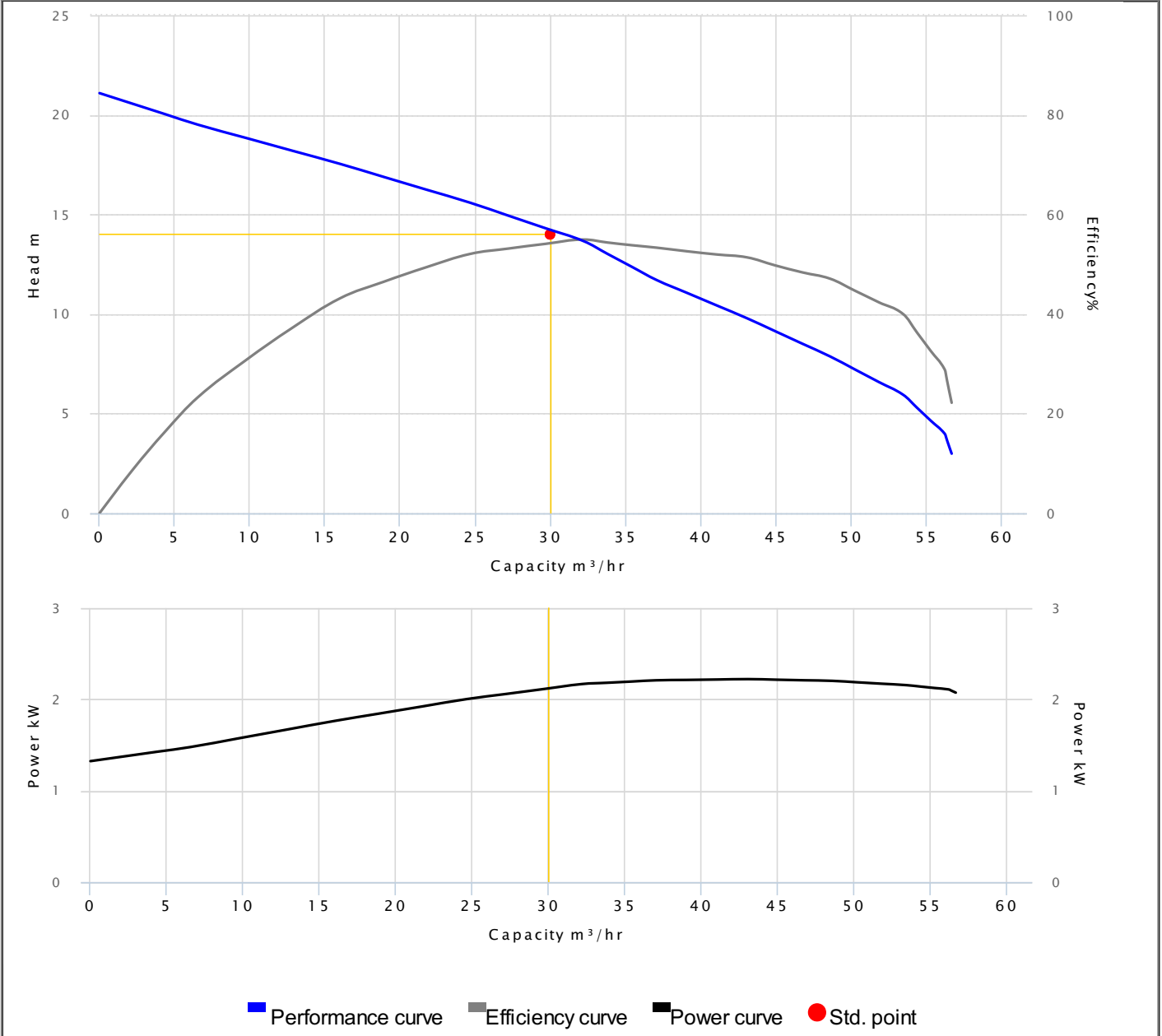


## PUMP PERFORMANCE CURVES

<b>Model</b>	IC-33B		
<b>Frequency</b>	50 Hz		
<b>Discharge</b>	3" / 80 mm		
<b>Power</b>	3 HP / 2.2 kW		
<b>Std. Head</b>	14 m		
<b>Std. Capacity</b>	30 m <sup>3</sup> /hr		
<b>Phase/Volt</b>	1 Ø / 220 V		
<b>Rated Current</b>	15.00 A		
<b>rpm</b>	2 P / 2820 rpm		
<b>Start Method</b>	CAPACITOR		
<b>Insulation Class</b>	F	<b>Efficiency</b>	54.3 %
<b>Solid Passage</b>	10 mm	<b>Output</b>	2.13 kW

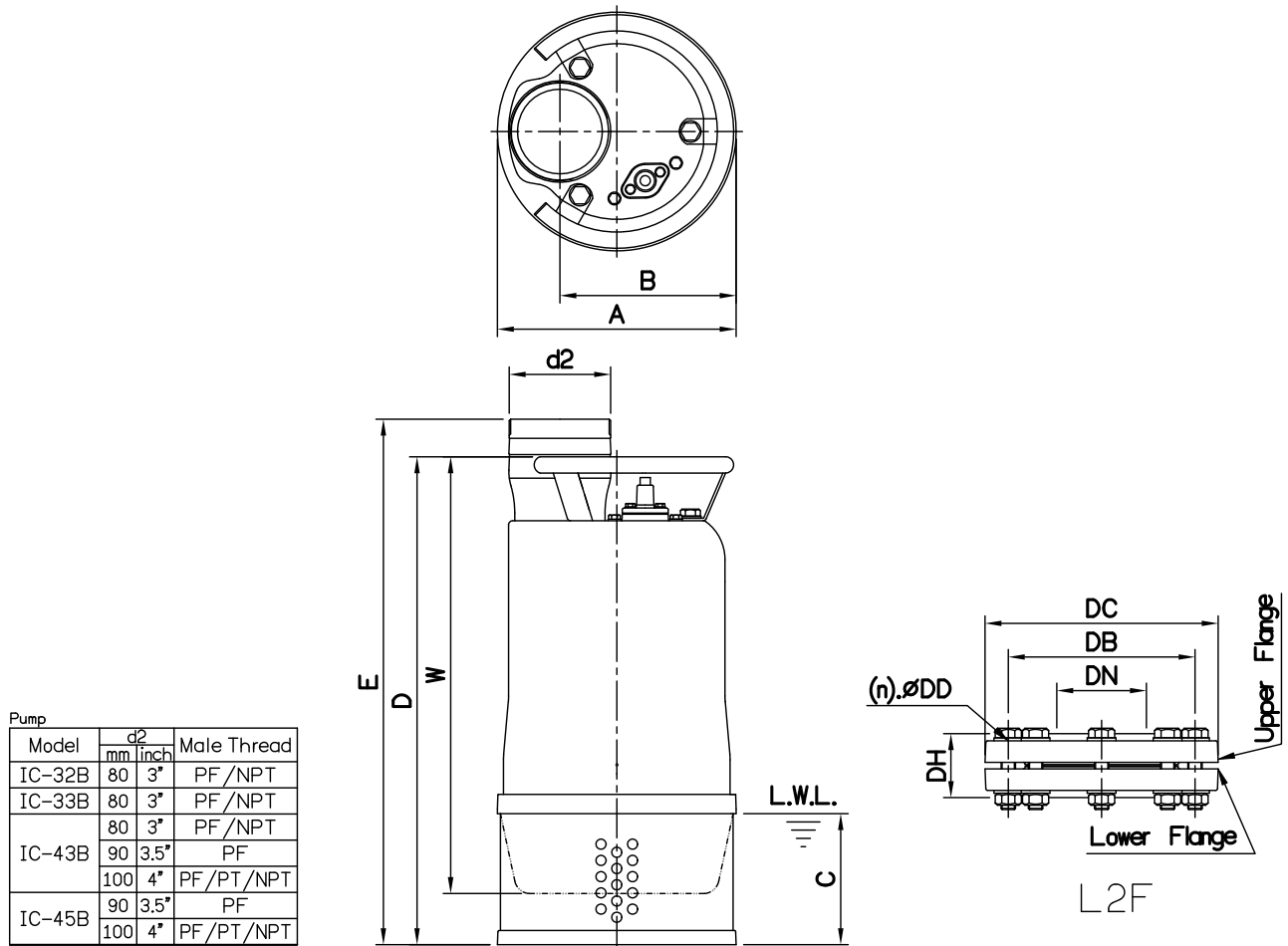


## DIMENSIONS

NO: S4IC0237030-00

MODEL: IC-32B / 33B / 43B / 45B

50Hz 1Ø / 3Ø



Pump		
Model	d2 mm   inch	Male Thread
IC-32B	80 3"	PF/NPT
IC-33B	80 3"	PF/NPT
IC-43B	80 3"	PF/NPT
	90 3.5"	PF
IC-45B	100 4"	PF/PT/NPT
	90 3.5"	PF
	100 4"	PF/PT/NPT

Dimensions-mm

Weight:kg

Model	A	B	C	D	E	W	WT1	Double Flange Set		
IC-32B 1Ø	235	174	115	511	548	475	40	L2F3-145-160	-	-
IC-32B 3Ø	235	174	115	466	503	430	36	L2F3-145-160	-	-
IC-33B 1Ø	235	174	115	541	578	505	45	L2F3-145-160	-	-
IC-33B 3Ø	235	174	115	466	503	430	39	L2F3-145-160	-	-
IC-43B 1Ø	235	174	130	556	593	505	45	L2F3-145-160	L2F4(3.5)-175-180	L2F4-165-190
IC-43B 3Ø	235	174	130	481	518	430	39	L2F3-145-160	L2F4(3.5)-175-180	L2F4-165-190
IC-45B 3Ø	235	174	130	511	548	460	44	L2F4(3.5)-175-180	L2F4-165-190	-

Dimensions-mm

Weight:kg

L2F	DN	DB	DC	DD	DH	WT2	(n)QTY
L2F3-145-160	80	145~160	195	19	55	7	8
L2F3-145-160	80	145~160	195	19	55	7	8
L2F4(3.5)-175-180	100	175~180	215	15	56	8	8
L2F4(3.5)-175-180	100	175~180	215	15	56	8	8
L2F4-165-190	100	165~190	225	19	58	9	8
L2F4-165-190	100	165~190	225	19	58	9	8
-	-	-	-	-	-	-	-

Dimensions-inch

Weight:lb

Model	A	B	C	D	E	W	WT1	Double Flange Set		
IC-32B 1Ø	9 1/4	6 7/8	4 1/2	20 1/8	21 1/8	18 1/8	88	L2F3-145-160	-	-
IC-32B 3Ø	9 1/4	6 7/8	4 1/2	18 3/8	19 3/8	16 5/8	79	L2F3-145-160	-	-
IC-33B 1Ø	9 1/4	6 7/8	4 1/2	21 1/8	22 3/4	19 3/8	99	L2F3-145-160	-	-
IC-33B 3Ø	9 1/4	6 7/8	4 1/2	18 3/8	19 3/8	16 5/8	86	L2F3-145-160	-	-
IC-43B 1Ø	9 1/4	6 7/8	5 1/8	21 7/8	23 3/8	19 3/8	99	L2F3-145-160	L2F4(3.5)-175-180	L2F4-165-190
IC-43B 3Ø	9 1/4	6 7/8	5 1/8	18 7/8	20 3/8	16 5/8	86	L2F3-145-160	L2F4(3.5)-175-180	L2F4-165-190
IC-45B 3Ø	9 1/4	6 7/8	5 1/8	20 1/8	21 1/8	20 1/8	97	L2F4(3.5)-175-180	L2F4-165-190	-

Dimensions-inch

Weight:lb

L2F	DN	DB	DC	DD	DH	WT2	(n)QTY
L2F3-145-160	3	5 1/8~6 5/16	7 3/8	3/4	2 3/16	15	8
L2F3-145-160	3	5 1/8~6 5/16	7 3/8	3/4	2 3/16	15	8
L2F4(3.5)-175-180	4	6 7/8~7 1/16	8 7/16	5/16	2 3/16	18	8
L2F4(3.5)-175-180	4	6 7/8~7 1/16	8 7/16	5/16	2 3/16	18	8
L2F4-165-190	4	6 1/2~7 1/2	8 7/8	3/4	2 5/16	20	8
L2F4-165-190	4	6 1/2~7 1/2	8 7/8	3/4	2 5/16	20	8
-	-	-	-	-	-	-	-

L.W.L.:Lowest Running Water Level

WT1:Pump Weight(Without Cable)

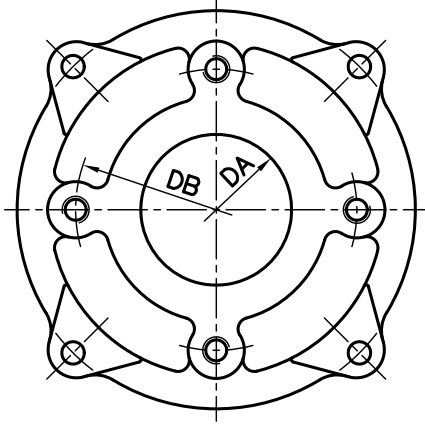
WT2:Double Flange Set Weight

W is the dimension from handle to casing cover.

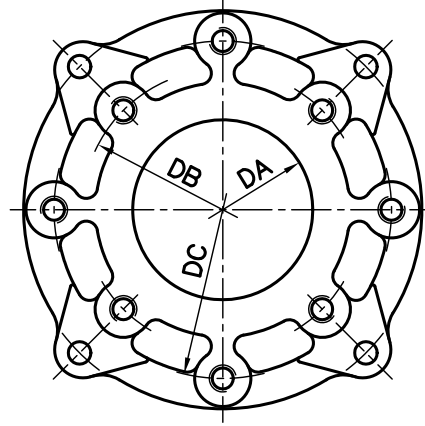
**DIMENSIONS**

**NO: SOIC0000001-00**

**MODEL: Casing cover**



IC-215,IC-32B,IC-33B,IC-46B  
IC-48,IC-410,IC-68,IC-610



IC-43B,IC-45B

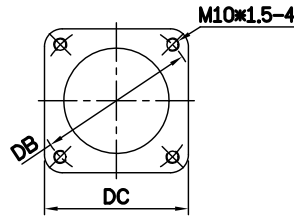
Application Model	Dimensions-mm			Dimensions-inch			Drilling
	DA	DB	DC	DA	DB	DC	
IC-215	50	100		2	4		M10
IC-32B	67	125		2 <sup>5</sup> / <sub>8</sub>	5		M12
IC-33B	67	125		2 <sup>5</sup> / <sub>8</sub>	5		M12
IC-43B	80	125	150	3	5	6	M12
IC-45B	80	125	150	3	5	6	M12
IC-46B	90	150		3 <sup>9</sup> / <sub>16</sub>	6		M12
IC-48	87	150		3 <sup>7</sup> / <sub>16</sub>	6		M12
IC-410	87	150		3 <sup>7</sup> / <sub>16</sub>	6		M12
IC-68	97	175		3 <sup>13</sup> / <sub>16</sub>	7		M12
IC-610	97	175		3 <sup>13</sup> / <sub>16</sub>	7		M12

## DIMENSIONS

NO: SOIC0000000-00

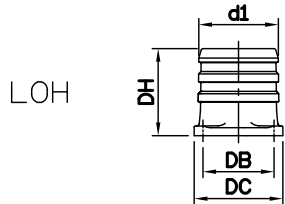
## MODEL: Outlet (4"~6")

## OUTLET CONNECTION

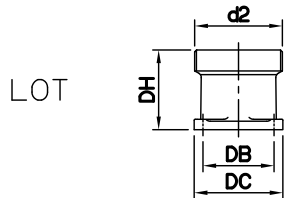


Model	mm		inch	
	DB	DC	DB	DC
5.5~7.5kW	127	112	5	4 7/16

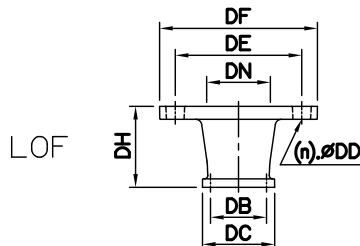
## OPTIONAL OUTLET ACCESSORIES



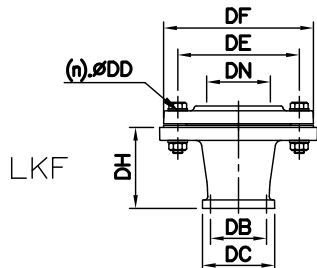
LOH	Dimensions-mm				kg	Dimensions-inch				lb
	d1	DB	DC	DH		d1	DB	DC	DH	
LOH4-127	100	127	112	110	3	4	5	4 7/16	4 5/16	7
LOH6-127	150	127	112	172	5	6	5	4 7/16	6 3/4	11



LOT	Dimensions-mm				kg	Dimensions-inch				lb	Thread Available		
	d2	DB	DC	DH		d2	DB	DC	DH		Weight		
LOT4-127	100	127	112	85	2	4	5	4 7/16	3 3/8	4	PF	PT	NPT
LOT6-127	150	127	112	140	4	6	5	4 7/16	5 1/2	9	PF	PT	NPT



LOF	Dimensions-mm								kg	Dimensions-inch								lb	(n)QTY
	DN	DB	DC	DD	DE	DF	DH	Weight		DN	DB	DC	DD	DE	DF	DH	Weight		
LOF4-175-190x127	100	127	112	19	175~190	225	110	10	4	5	4 7/16	3/4	6 7/8~7 1/2	8 3/8	4 5/16	22	8		
LOF6-240x127	150	127	112	23	240	280	140	14	6	5	4 7/16	7/8	9 3/16	11	5 1/2	31	8		



LKF	Dimensions-mm								kg	Dimensions-inch								lb	(n)QTY	Thread Available	
	DN	DB	DC	DD	DE	DF	DH	Weight		DN	DB	DC	DD	DE	DF	DH	Weight				
LKF4-175x127	100	127	112	15	175	210	110	10	4	5	4 7/16	9/16	6 7/8	8 1/4	4 5/16	22	8	PT	NPT		
LKF6-240x127	150	127	112	23	240	280	140	20	6	5	4 7/16	7/8	9 3/16	11	5 1/2	44	8	PT	NPT		