

HDG SERIES

SUBMERSIBLE SLURRY DEWATERING PUMPS

POWER : 2~10HP (1.5~7.5kW)
MAX.HEAD : 37m(121feet)
MAX.FLOW : 2.6m³/min (156m³/h)



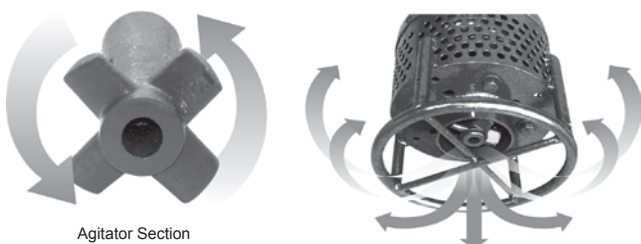
PRODUCT NOMENCLATURE

Example :

80	HDG	2	1.5
Discharge mm	Type	Pole	kW

FEATURES

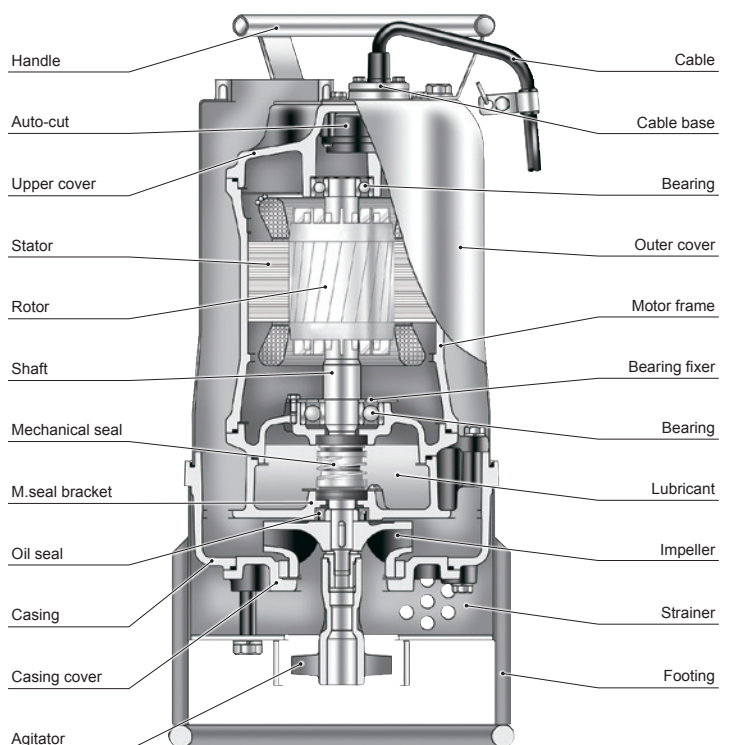
- Design for civil engineering, light weight for easy portability, double outer casing water cooling motor make it possible to run the pump to low water level.
- Best waterproof structure, automatic rest motor protector and double mechanical seal made of silicon carbide. Durable and leak proof.
- Compact, strong design and easy operation in any place.
- Impeller made of high chrome alloy (HiCrFC) steel with a hardness of 55~60 HRC. Harden and abrasion resistant.
- Equipped with a cast iron (FCD) agitator to create powerful stirring and pumping action for slurry.



Agitator Section

APPLICATIONS

- Civil engineering, dewatering for tunnel engineering also for manhole sewer.
- Dewatering fluid contain solid sediment.
- Mobile use for contractors, installers and industry.



HDG SERIES SUBMERSIBLE SLURRY DEWATERING PUMPS

80HDG21.5 · 80HDG22.2 · 80HDG23.7

SPECIFICATIONS

Item		Description
Limits of Use	Liquid Temp.	0~40°C(32~104°F)
	Applications	Dewatering Fluid Contain Solid Sediment
Type	Frequency	50Hz
	Motor	2P(3000rpm) · Dry Motor
	Insulation	Class F
	Protection	IP68
	Protector	Auto-cut
	Bearing	Ball type
	M.seal	Double M.seals
	Impeller	Close
Material	Upper Cover	FC200
	Motor Frame	FC200
	Shaft	SUS403(2~3HP) · SUS304(5HP)
	M.seal	CA/CE & SiC/SiC
	Casing	FC200
	Impeller	HiCrFC
	Wear ring	HiCrFC
	Agitator	FCD700
	Cable	VCT or H07RN-F or SJOW/SOW
	Optional	-



80HDG21.5 · 80HDG22.2 · 80HDG23.7



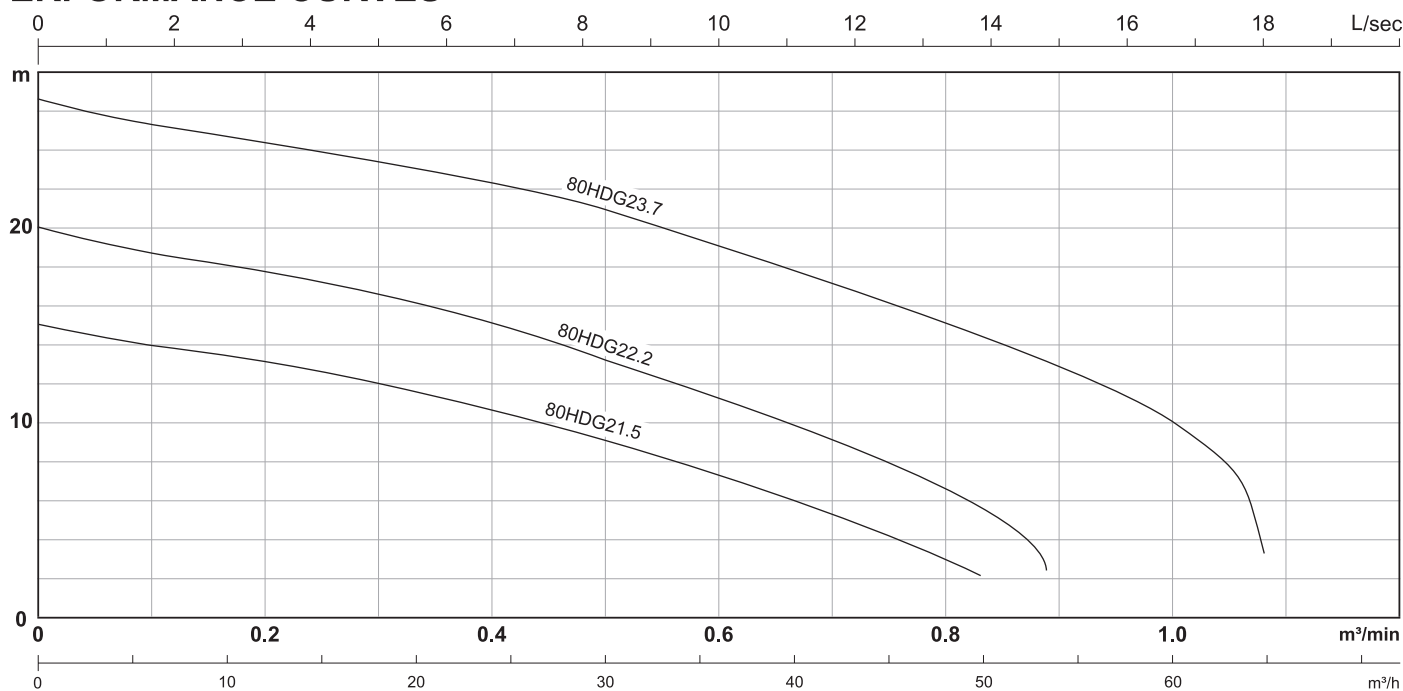
Close Impeller



Agitator

Model	Power HP(kW)	Discharge inch(mm)	Standard		MAX		Solid Passage mm(inch)	Weight(W/O Cable)		Phase	Full load Ampere						
			m-m³/min	m-m³/h	m-m³/min	m-m³/h		1Ø-kg(lbs)	3Ø-kg(lbs)		Voltage	220V	230V	230V	380V	400V	415V
80HDG21.5	2(1.5)	3"(80)	9-0.5	9-30	15-0.9	15-54	10(3/8")	41(90)	36(79)	Full load Ampere	10.4	10.0	6.1	3.6	3.4	3.4	2.7
80HDG22.2	3(2.2)	3"(80)	13-0.5	13-30	20-0.95	20-57	10(3/8")	45(99)	40(88)		15.0	14.6	8.7	5.2	4.9	4.8	3.9
80HDG23.7	5(3.7)	3"(80)	21-0.5	21-30	26.5-1.2	26.5-72	10(3/8")	-	45(99)		-	-	14.3	8.3	7.9	7.9	6.3

PERFORMANCE CURVES



Model	Power HP(kW)	Discharge inch(mm)	Q:m³/min										Q:L/sec						
			0.1	0.2	0.3	0.4	0.5	0.6	0.8	1	2	4	6	8	10	12	14	16	
80HDG21.5	2(1.5)	3"(80)	14.0	13.2	12.0	10.7	9.1	7.4	3.0	-	H:m	13.9	12.8	11.1	9.5	7.3	4.8	-	-
80HDG22.2	3(2.2)	3"(80)	18.9	17.8	16.6	15.2	13.2	11.3	6.6	-		18.5	17.4	15.8	13.6	11.3	8.7	5.4	-
80HDG23.7	5(3.7)	3"(80)	25.4	24.4	23.4	22.3	21.0	19.1	15.2	10.1		25.2	24.0	22.8	21.3	19.1	16.8	14.3	11.4

HDG SERIES SUBMERSIBLE SLURRY DEWATERING PUMPS

80HDG25.5 · 100HDG25.5 · 100HDG27.5 · 150HDG25.5 · 150HDG27.5

SPECIFICATIONS

Item		Description
Limits of Use	Liquid Temp.	0~40°C(32~104°F)
	Applications	Dewatering Fluid Contain Solid Sediment
Type	Frequency	50Hz
	Motor	2P(3000rpm) · Dry Motor
	Insulation	Class H
	Protection	IP68
	Protector	Auto-cut
	Bearing	Ball type
	M.seal	Double M.seals
Material	Impeller	Close (80HDG25.5:Open)
	Upper Cover	FC200
	Motor Frame	FC200
	Shaft	SUS304
	M.seal	CA/CE & SIC/SiC
	Casing	FC200
	Impeller	HiCrFC
	Wear plate	HiCrFC(For Open)
	Wear ring	HiCrFC(For Close)
	Agitator	FCD700
Cable	VCT or H07RN-F or SOW	
Optional	-	



80HDG25.5 · 100HDG25.5 · 100HDG27.5 · 150HDG25.5 · 150HDG27.5



Open Impeller



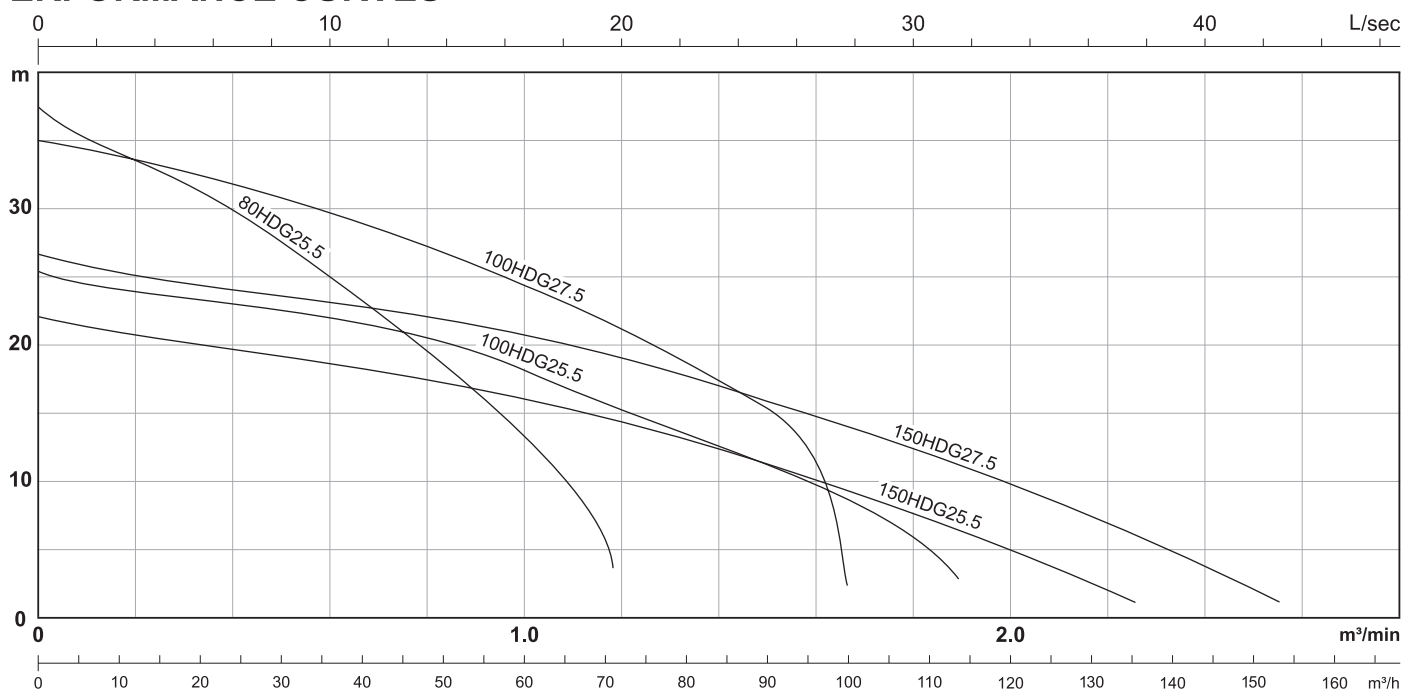
Close Impeller



Agitator

Model	Power HP(kW)	Discharge inch(mm)	Standard		MAX		Solid Passage mm(inch)	Weight(W/O Cable)		Phase Voltage	Full load Ampere						
			m-m³/min	m-m³/h	m-m³/min	m-m³/h		1Ø-kg(lbs)	3Ø-kg(lbs)		220V	230V	230V	380V	400V	415V	525V
80HDG25.5	7.5(5.5)	3"(80)	27-0.5	27-30	37-1.2	37-72	10(3/8")	-	73(161)	Full load Ampere	-	-	21.2	12.0	11.8	11.8	9.3
100HDG25.5	7.5(5.5)	4"(100)	18-1.0	18-60	25-1.9	25-114	10(3/8")	-	76(168)		-	-	21.2	12.0	11.8	11.8	9.3
100HDG27.5	10(7.5)	4"(100)	24-1.0	24-60	35-1.7	35-102	10(3/8")	-	81(179)		-	-	28.6	16.0	15.8	15.8	12.6
150HDG25.5	7.5(5.5)	6"(150)	11-1.5	11-90	22-2.3	22-138	10(3/8")	-	79(174)		-	-	21.2	12.0	11.8	11.8	9.3
150HDG27.5	10(7.5)	6"(150)	16-1.5	16-90	26-2.6	26-156	10(3/8")	-	82(181)		-	-	28.6	16.0	15.8	15.8	12.6

PERFORMANCE CURVES



Model	Power HP(kW)	Discharge inch(mm)	Q:m³/min Q:m³/h	Q:L/sec								Q:L/sec	H:m							
				0.2	0.4	0.6	0.8	1.2	1.6	2	2.4		5	10	15	20	25	30	35	40
80HDG25.5	7.5(5.5)	3"(80)	H:m	33.6	30.0	25.0	19.6	-	-	-	-	H:m	32.0	25.0	16.6	-	-	-	-	
100HDG25.5	7.5(5.5)	4"(100)		24.0	23.0	22.0	20.6	15.3	9.8	-	-		23.5	22.0	19.6	15.3	11.3	6.0	-	-
100HDG27.5	10(7.5)	4"(100)		33.6	31.8	29.7	27.2	21.2	11.4	-	-		32.8	29.7	25.8	21.2	15.4	-	-	-
150HDG25.5	7.5(5.5)	6"(150)		20.8	19.7	18.6	17.5	14.4	10.1	5.0	-		20.2	18.6	16.8	14.4	11.3	7.6	3.6	-
150HDG27.5	10(7.5)	6"(150)		25.1	24.0	23.2	22.1	19.1	14.8	9.8	3.8		24.6	23.2	21.5	19.1	15.8	12.4	8.4	3.8

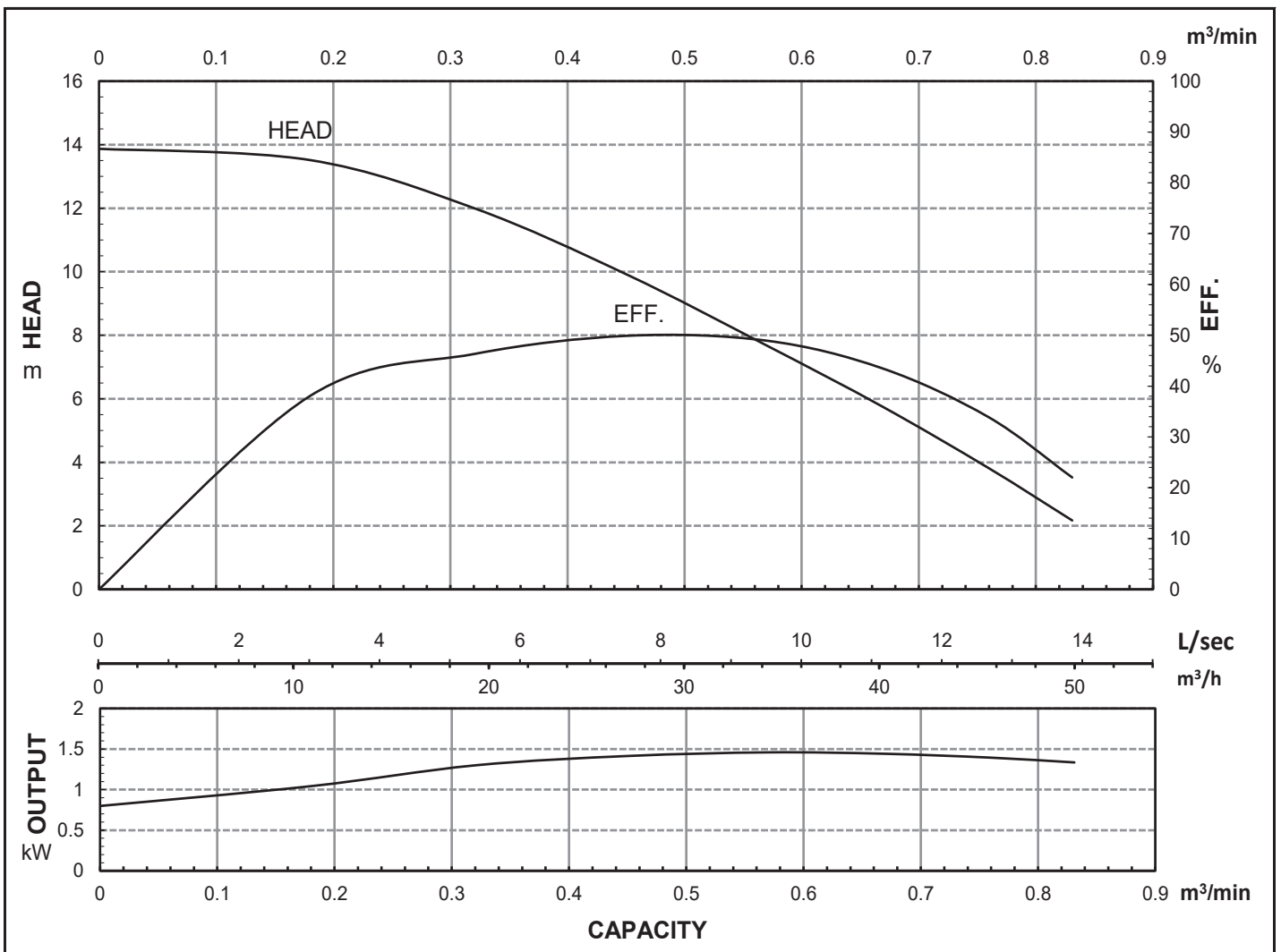


HCP PUMP

FILE NO. PC-M-E5-80HDG21.51

PUMP PERFORMANCE CURVES

MODEL	80HDG21.5					VER. NO. AI0711	
	STANDARD SPECIFICATION					REFERENCE SPECIFICATION	
FREQUENCY	50 Hz						
DISCHARGE	3	inch	/	80	mm		
OUTPUT	2	HP	/	1.5	kW	HP	kW
HEAD	9 m						
CAPACITY	0.5 m ³ /min						
PHASE/VOLTAGE	1 Ø	220 V	230 V	240 V		Ø	V
RATED CURRENT		10.4 A	10.0 A	9.8 A			A
POLE / rpm	2	P	/	2800	rpm		
START METHOD	CAPACITOR						
INSULATION CLASS	F						
REMARK							



HCP PUMP MANUFACTURER CO., LTD.

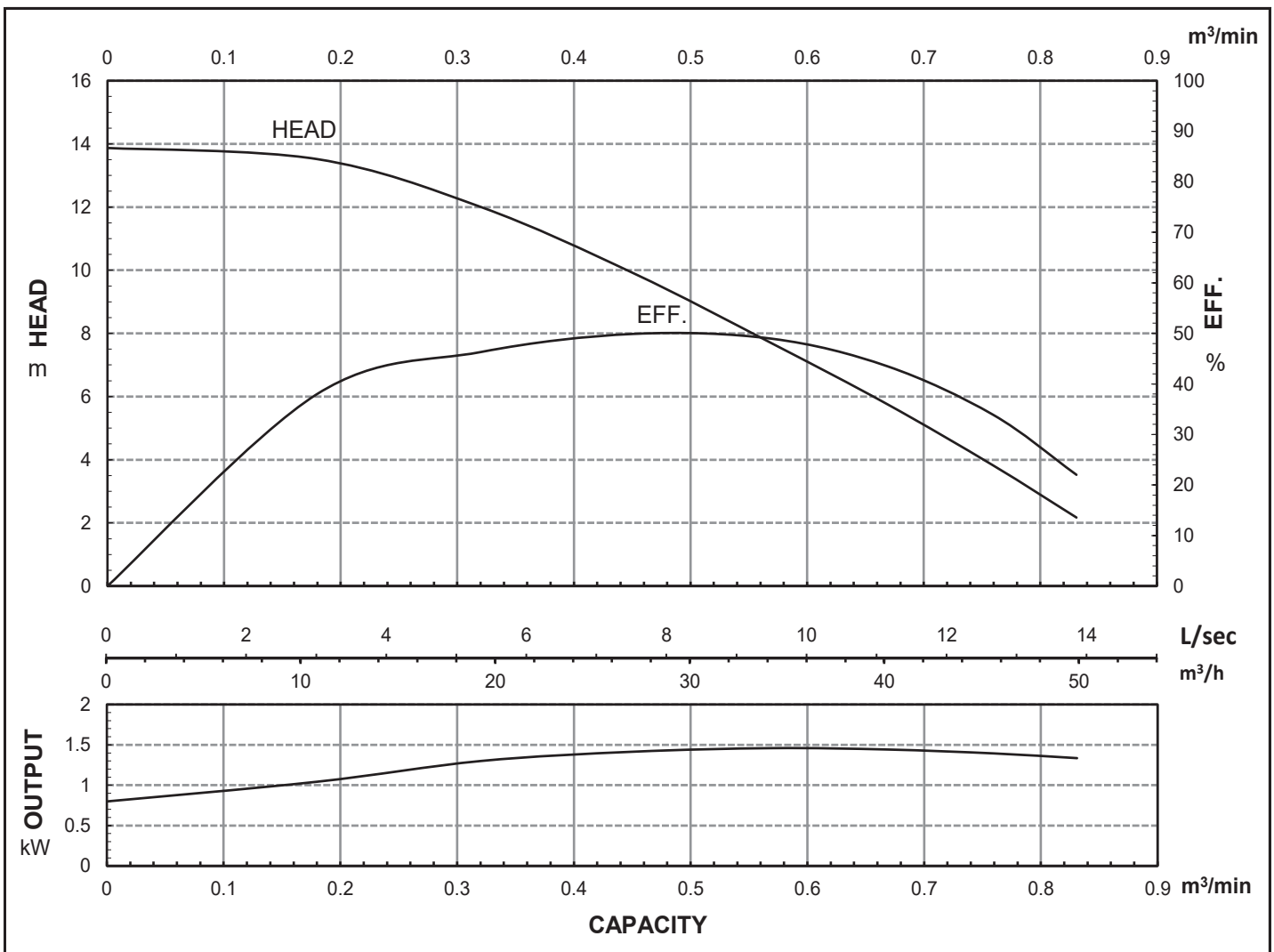


HCP PUMP

FILE NO. PC-M-E5-80HDG21.53

PUMP PERFORMANCE CURVES

MODEL	80HDG21.5					VER. NO. AI0711
	STANDARD SPECIFICATION					REFERENCE SPECIFICATION
FREQUENCY	50 Hz					
DISCHARGE	3 inch	/			80 mm	
OUTPUT	2 HP	/			1.5 kW	HP kW
HEAD	9 m					
CAPACITY	0.5 m ³ /min					
PHASE/VOLTAGE	3 Ø	230 V	380 V	400 V	415 V	525 V
RATED CURRENT		6.1 A	3.6 A	3.4 A	3.4 A	2.7 A
POLE / rpm	2 P	/			2800 rpm	
START METHOD	DIRECT					
INSULATION CLASS	F					
REMARK						



HCP PUMP MANUFACTURER CO., LTD.

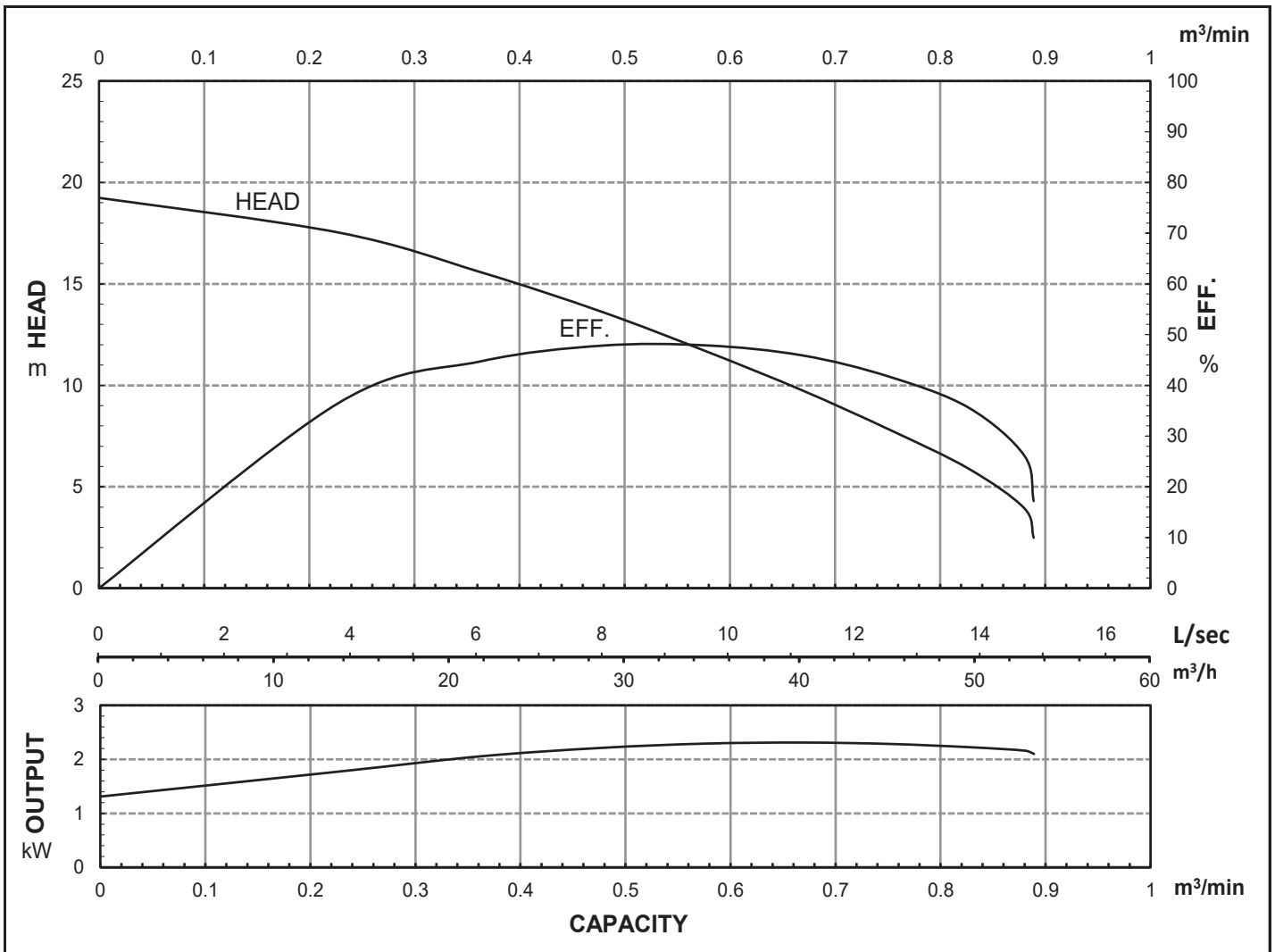


HCP PUMP

FILE NO. PC-M-E5-80HDG22.21

PUMP PERFORMANCE CURVES

MODEL	80HDG22.2					VER. NO. AI0711	
	STANDARD SPECIFICATION					REFERENCE SPECIFICATION	
FREQUENCY	50 Hz						
DISCHARGE	3	inch /		80	mm		
OUTPUT	3	HP /		2.2	kW		
HEAD	13 m						
CAPACITY	0.5 m ³ /min						
PHASE/VOLTAGE	1 Ø	220 V	230 V	240 V	Ø V		
RATED CURRENT		15.0 A	14.6 A	14.6 A	A		
POLE / rpm	2	P /		2820	rpm		
START METHOD	CAPACITOR						
INSULATION CLASS	F						
REMARK							



HCP PUMP MANUFACTURER CO., LTD.

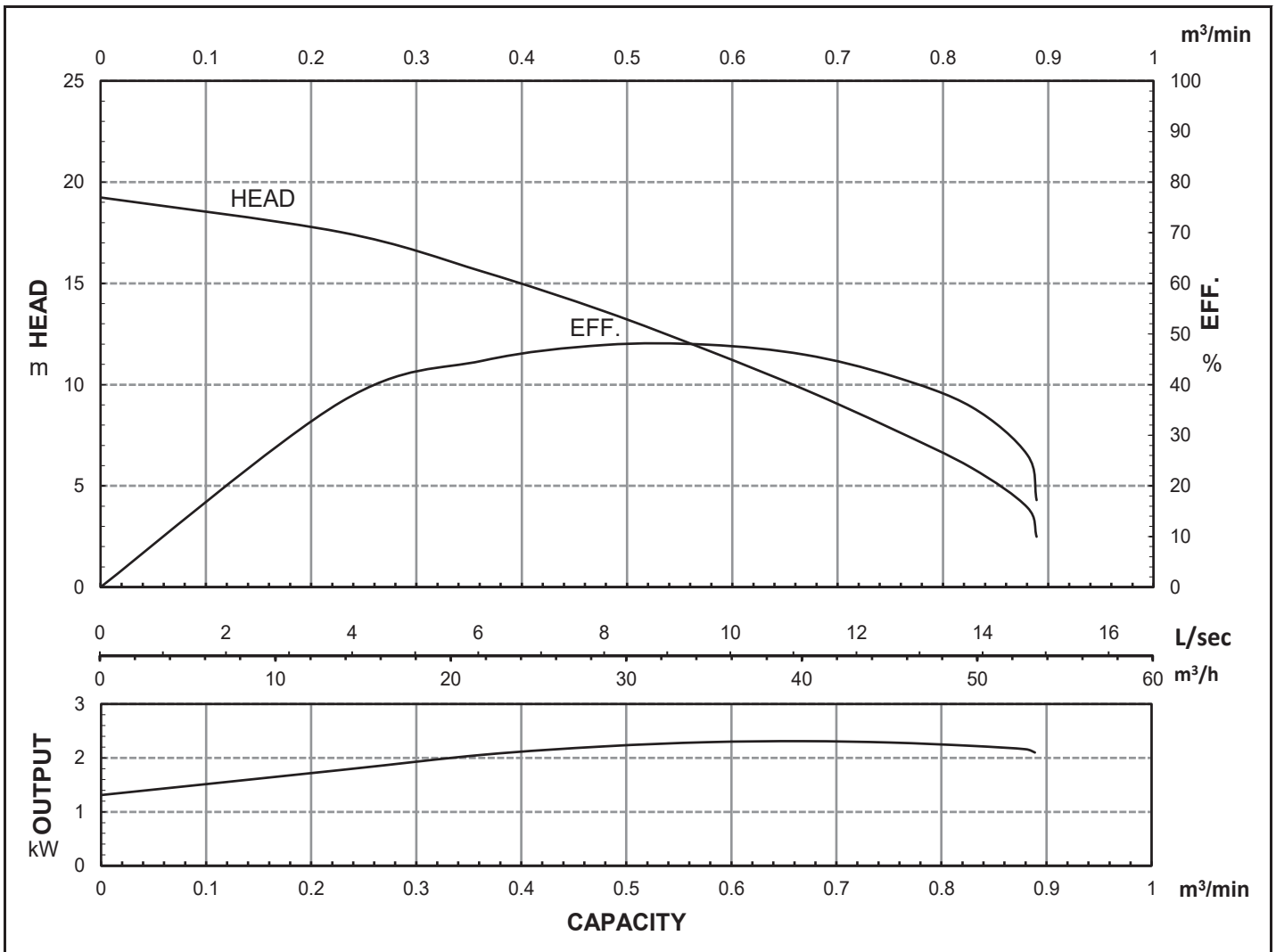


HCP PUMP

FILE NO. PC-M-E5-80HDG22.23

PUMP PERFORMANCE CURVES

MODEL	80HDG22.2					VER. NO. AI0711	
	STANDARD SPECIFICATION					REFERENCE SPECIFICATION	
FREQUENCY	50 Hz						
DISCHARGE	3	inch	/	80	mm		
OUTPUT	3	HP	/	2.2	kW	HP	kW
HEAD	13 m						
CAPACITY	0.5 m ³ /min						
PHASE/VOLTAGE	3 Ø	230 V	380 V	400 V	415 V	525 V	Ø V
RATED CURRENT		8.7 A	5.2 A	4.9 A	4.8 A	3.9 A	A
POLE / rpm	2	P	/	2820	rpm		
START METHOD	DIRECT						
INSULATION CLASS	F						
REMARK							



HCP PUMP MANUFACTURER CO., LTD.

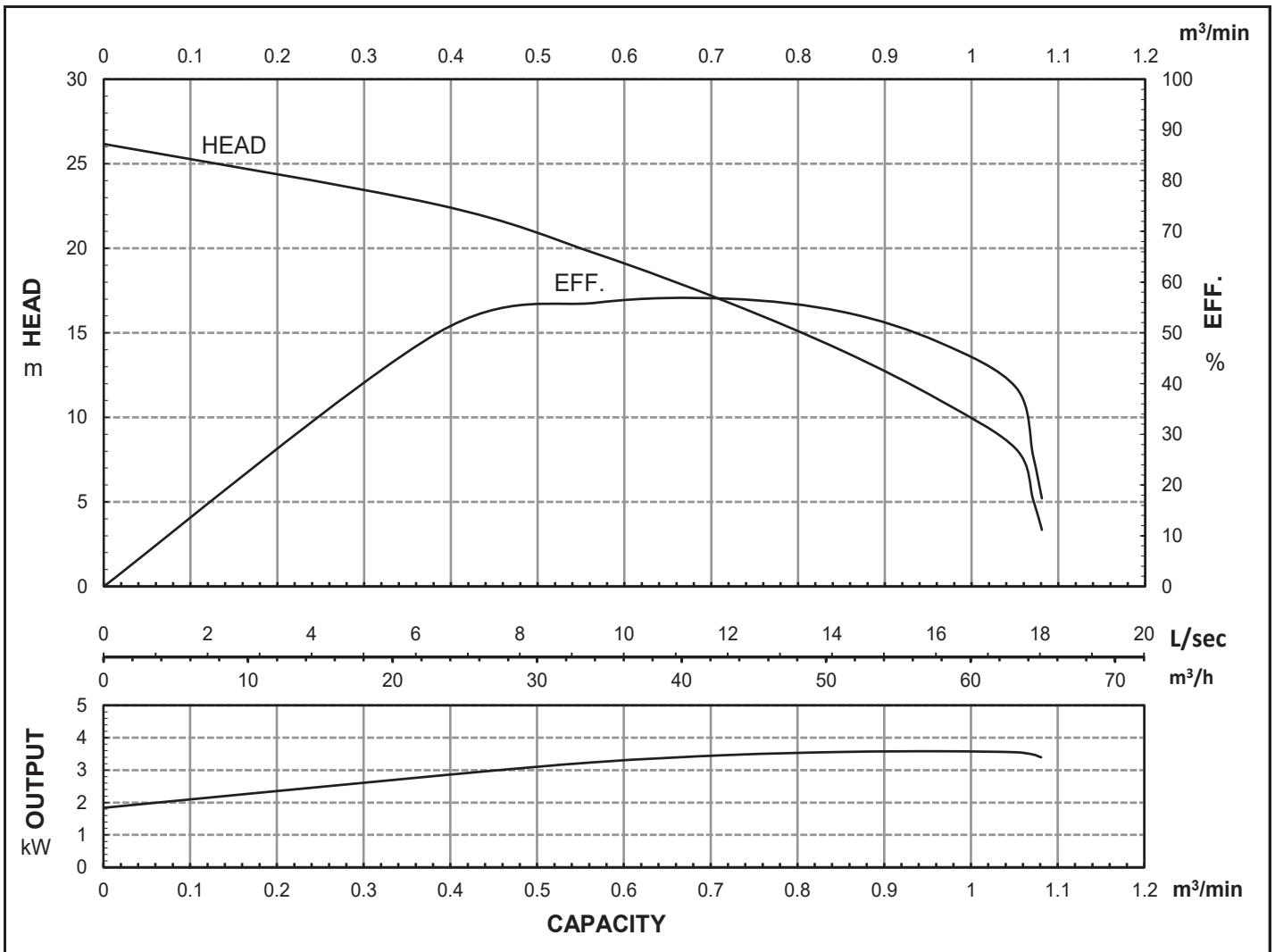


HCP PUMP

FILE NO. PC-M-E5-80HDG23.73

PUMP PERFORMANCE CURVES

MODEL	80HDG23.7					VER. NO. AI0711
	STANDARD SPECIFICATION					REFERENCE SPECIFICATION
FREQUENCY	50 Hz					
DISCHARGE	3 inch	/			80 mm	
OUTPUT	5 HP	/			3.7 kW	HP kW
HEAD	21 m					
CAPACITY	0.5 m ³ /min					
PHASE/VOLTAGE	3 Ø	230 V	380 V	400 V	415 V	525 V
RATED CURRENT		14.3 A	8.3 A	7.9 A	7.9 A	6.3 A
POLE / rpm	2 P	/			2800 rpm	
START METHOD	DIRECT					
INSULATION CLASS	F					
REMARK						



HCP PUMP MANUFACTURER CO., LTD.

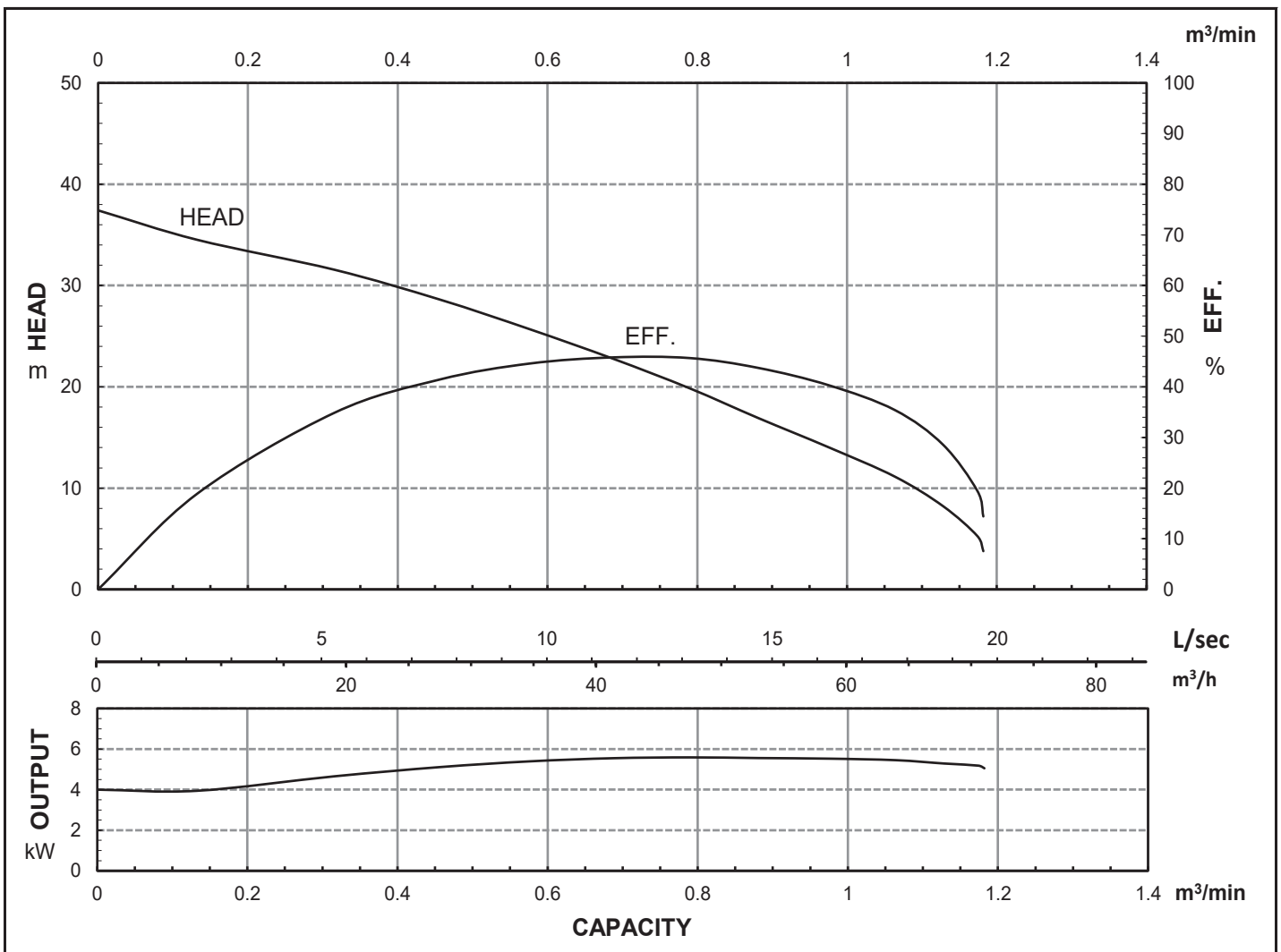


HCP PUMP

FILE NO. PC-M-E5-80HDG25.53

PUMP PERFORMANCE CURVES

MODEL	80HDG25.5					VER. NO. AI0925	
	STANDARD SPECIFICATION					REFERENCE SPECIFICATION	
FREQUENCY	50 Hz						
DISCHARGE	3	inch	/	80	mm		
OUTPUT	7.5	HP	/	5.5	kW	HP	kW
HEAD	27 m						
CAPACITY	0.5 m ³ /min						
PHASE/VOLTAGE	3 Ø	230 V	380 V	400 V	415 V	525 V	Ø V
RATED CURRENT		21.2 A	12.0 A	11.8 A	11.8 A	9.3 A	A
POLE / rpm	2	P	/	2850	rpm		
START METHOD	DIRECT						
INSULATION CLASS	H						
REMARK							



HCP PUMP MANUFACTURER CO., LTD.

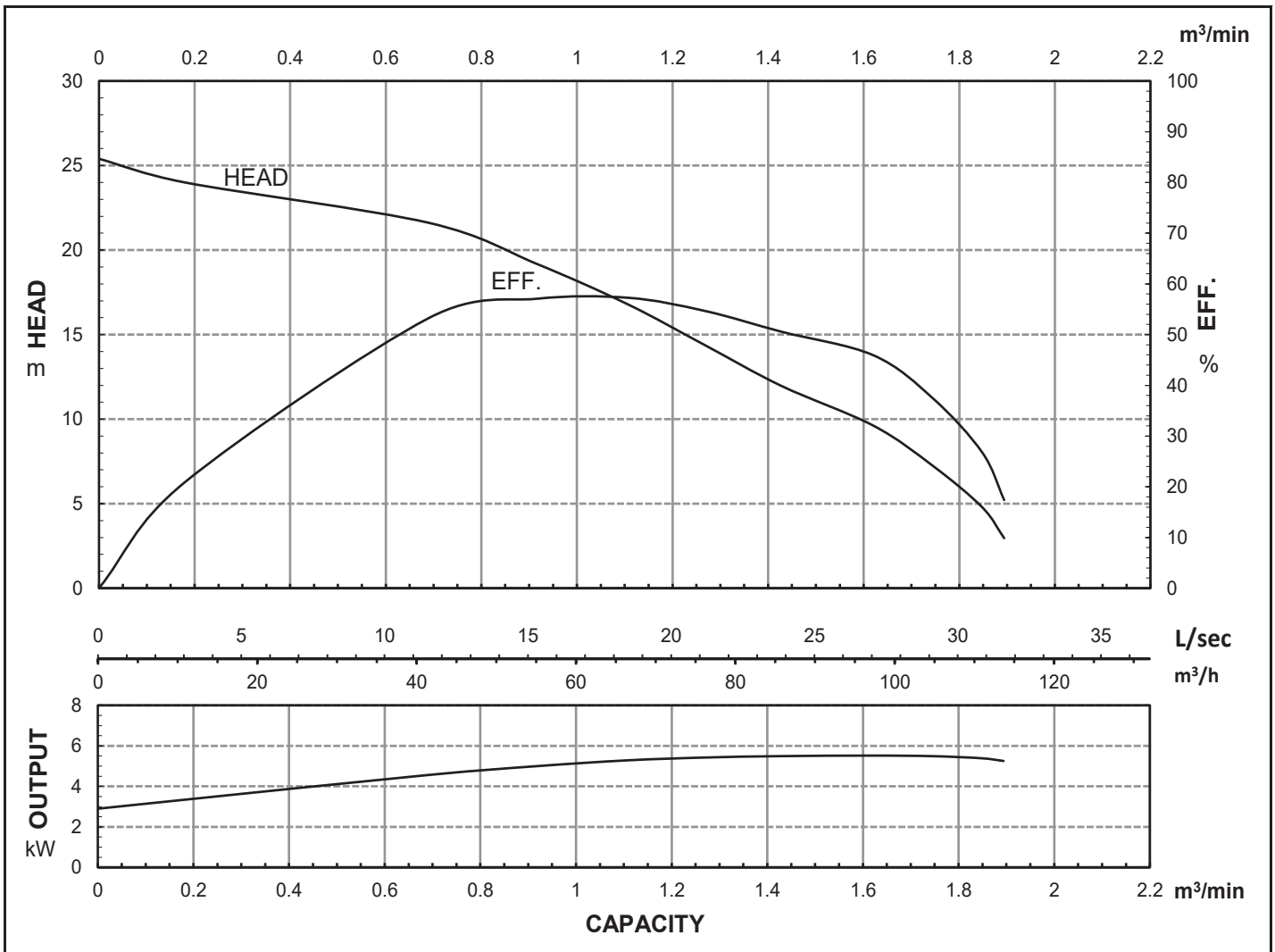


HCP PUMP

FILE NO. PC-M-E5-100HDG25.53

PUMP PERFORMANCE CURVES

MODEL	100HDG25.5					VER. NO. A10925	
	STANDARD SPECIFICATION					REFERENCE SPECIFICATION	
FREQUENCY	50 Hz						
DISCHARGE	4	inch /		100	mm		
OUTPUT	7.5	HP /		5.5	HP	kW	
HEAD	18 m						
CAPACITY	1 m ³ /min						
PHASE/VOLTAGE	3 Ø	230 V	380 V	400 V	415 V	525 V	Ø V
RATED CURRENT		21.2 A	12.0 A	11.8 A	11.8 A	9.3 A	A
POLE / rpm	2	P /		2850	rpm		
START METHOD	DIRECT						
INSULATION CLASS	H						
REMARK							



HCP PUMP MANUFACTURER CO., LTD.

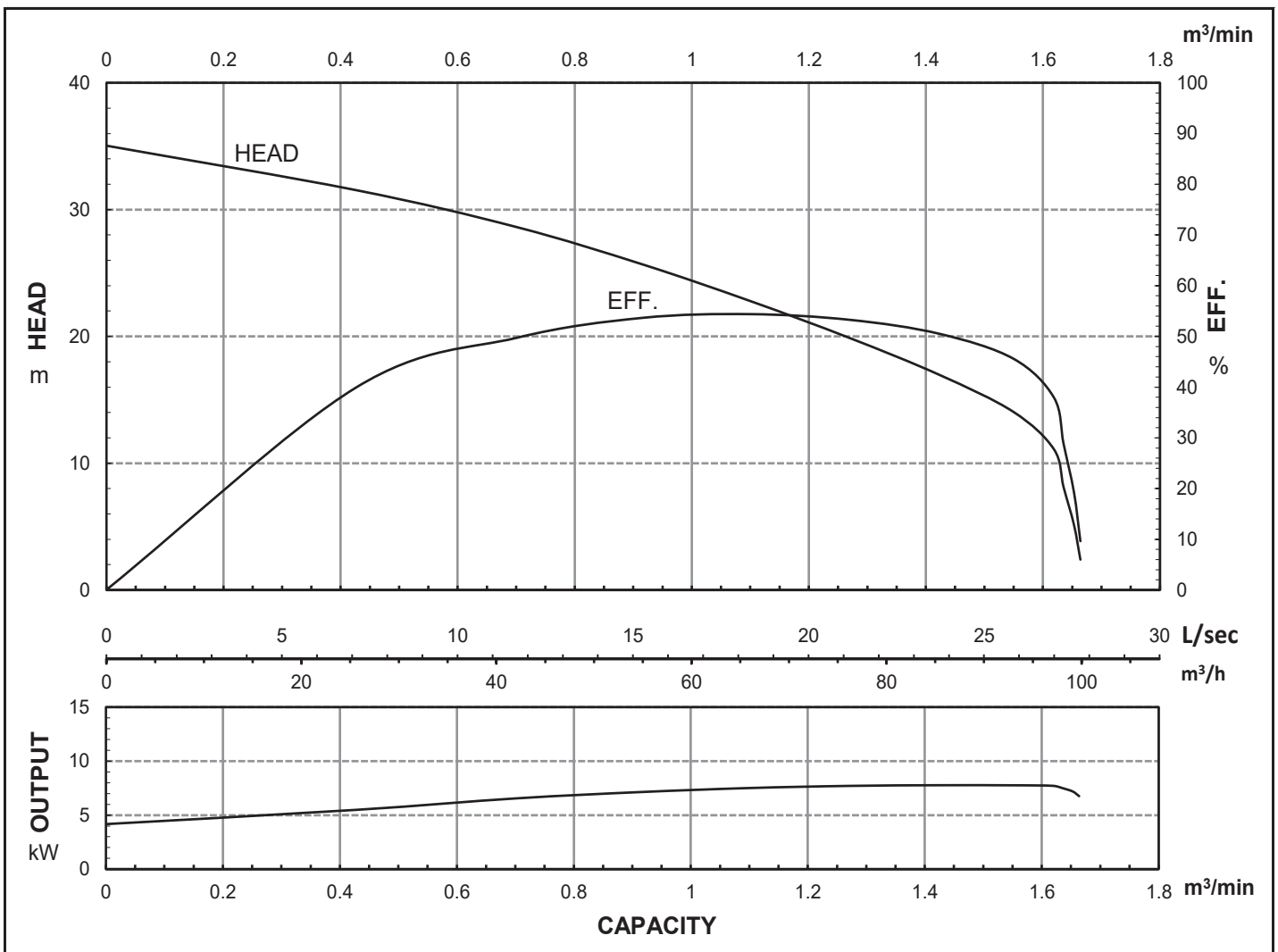


HCP PUMP

FILE NO. PC-M-E5-100HDG27.53

PUMP PERFORMANCE CURVES

MODEL	100HDG27.5					VER. NO. AI0925	
	STANDARD SPECIFICATION					REFERENCE SPECIFICATION	
FREQUENCY	50 Hz						
DISCHARGE	4	inch /		100	mm		
OUTPUT	10	HP /		7.5	HP	kW	
HEAD	24 m						
CAPACITY	1 m ³ /min						
PHASE/VOLTAGE	3 Ø	230 V	380 V	400 V	415 V	525 V	Ø V
RATED CURRENT		28.6 A	16.0 A	15.8 A	15.8 A	12.6 A	A
POLE / rpm	2 P / 2850 rpm						
START METHOD	DIRECT						
INSULATION CLASS	H						
REMARK							



HCP PUMP MANUFACTURER CO., LTD.

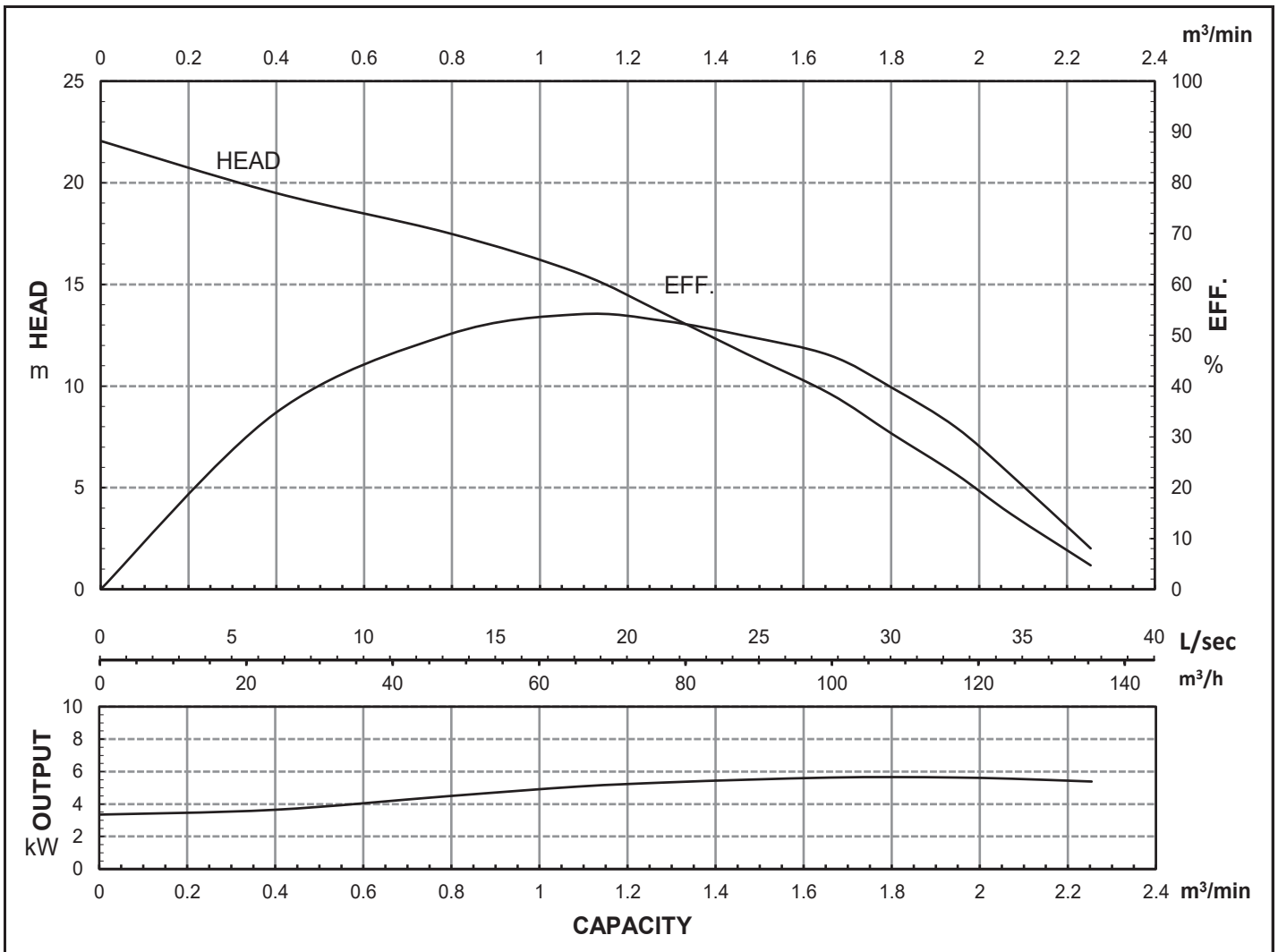


HCP PUMP

FILE NO. PC-M-E5-150HDG25.53

PUMP PERFORMANCE CURVES

MODEL	150HDG25.5					VER. NO. AI0925	
	STANDARD SPECIFICATION					REFERENCE SPECIFICATION	
FREQUENCY	50 Hz						
DISCHARGE	6	inch /		150	mm		
OUTPUT	7.5	HP /		5.5	HP	kW	
HEAD	11 m						
CAPACITY	1.5 m ³ /min						
PHASE/VOLTAGE	3 Ø	230 V	380 V	400 V	415 V	525 V	Ø V
RATED CURRENT		21.2 A	12.0 A	11.8 A	11.8 A	9.3 A	A
POLE / rpm	2	P /		2850	rpm		
START METHOD	DIRECT						
INSULATION CLASS	H						
REMARK							



HCP PUMP MANUFACTURER CO., LTD.

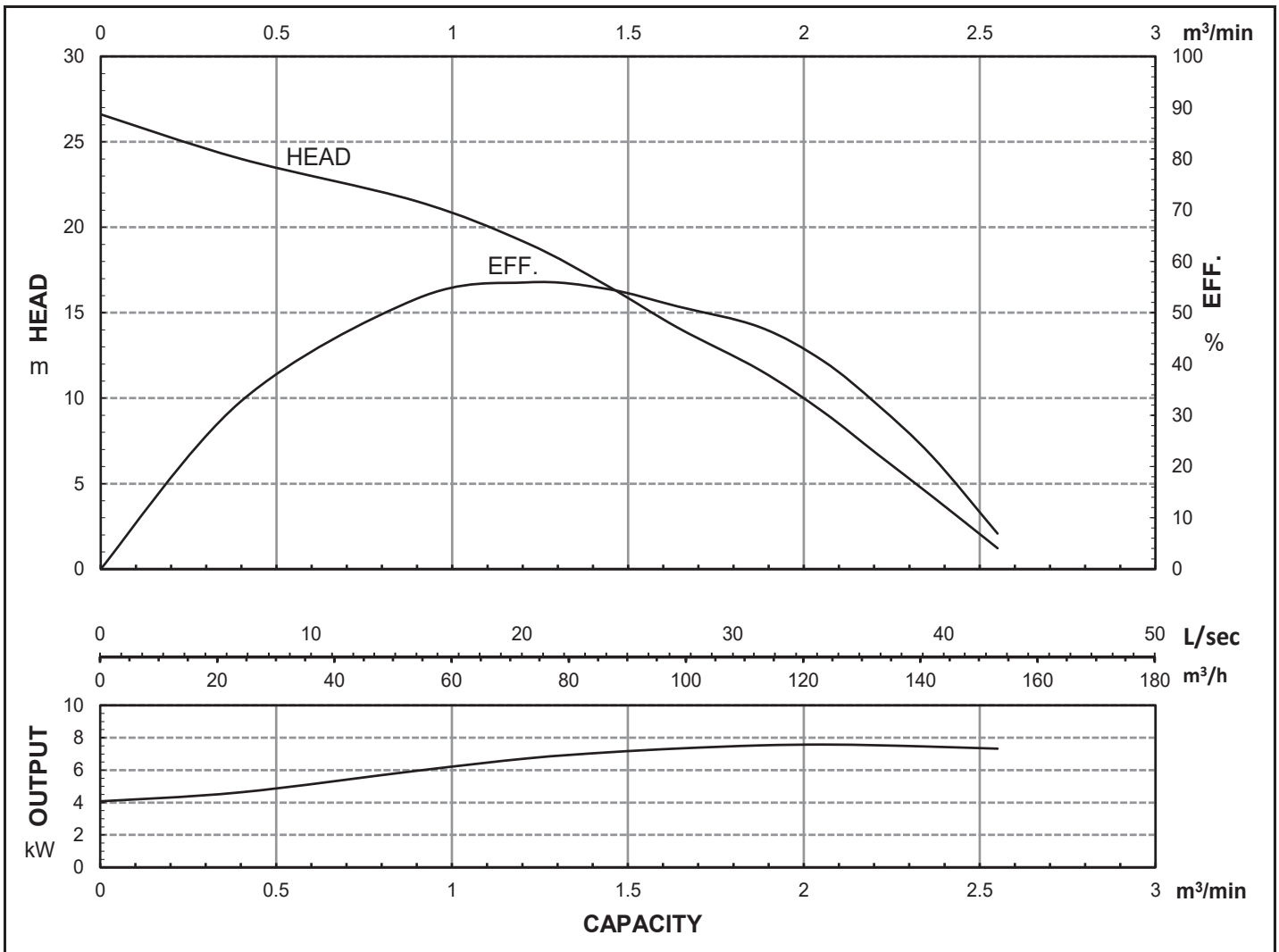


HCP PUMP

FILE NO. PC-M-E5-150HDG27.53

PUMP PERFORMANCE CURVES

MODEL	150HDG27.5					VER. NO. AI0925	
	STANDARD SPECIFICATION					REFERENCE SPECIFICATION	
FREQUENCY	50 Hz						
DISCHARGE	6	inch	/	150	mm		
OUTPUT	10	HP	/	7.5	kW	HP	kW
HEAD	16 m						
CAPACITY	1.5 m ³ /min						
PHASE/VOLTAGE	3 Ø	230 V	380 V	400 V	415 V	525 V	Ø V
RATED CURRENT		28.6 A	16.0 A	15.8 A	15.8 A	12.6 A	A
POLE / rpm	2	P	/	2850	rpm		
START METHOD	DIRECT						
INSULATION CLASS	H						
REMARK							



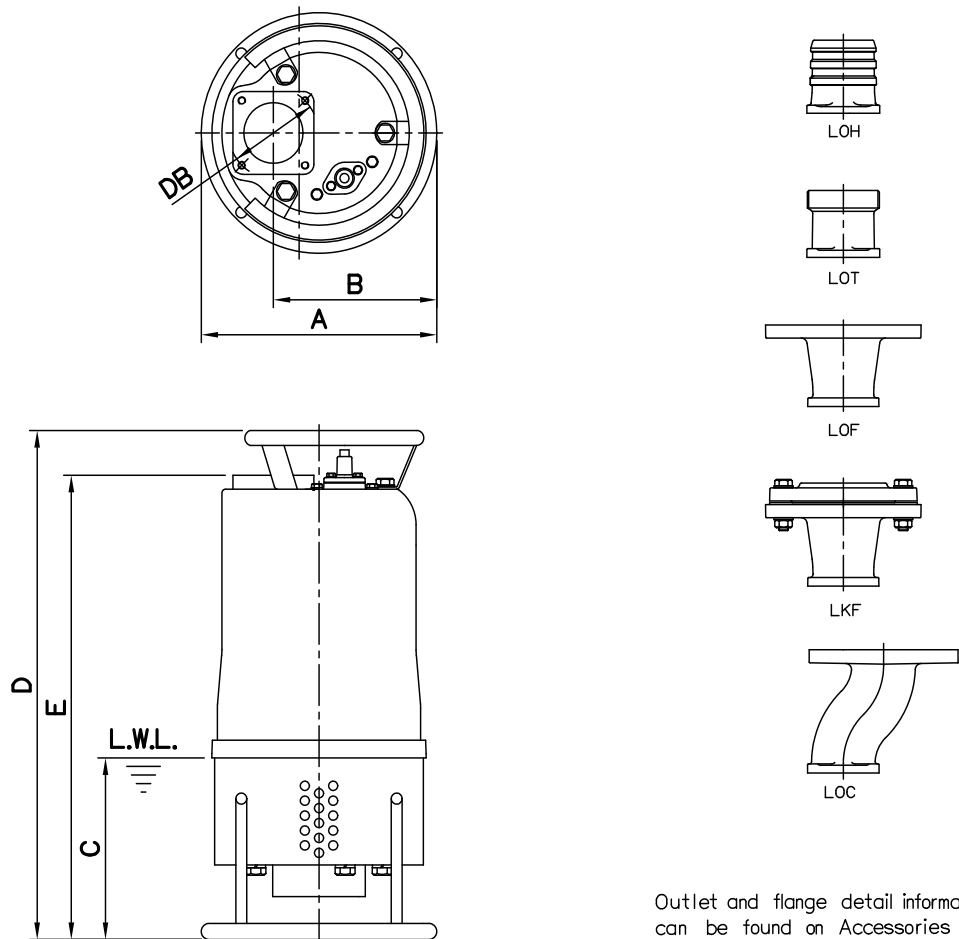
HCP PUMP MANUFACTURER CO., LTD.

DIMENSIONS

NO: S3HDG237030-00

MODEL: 80HDG21.5 / 22.2 / 23.7

60Hz 1Ø / 3Ø



Outlet and flange detail information can be found on Accessories section.

Dimensions-mm

Weight:kg

Model	A	B	C	D	E	DB	WT1	Optional Outlet Accessories				
								LOH	LOT	LOF	LKF	LOC
80HDG21.5 1Ø	260	179	195	592	546	98	41	LOH3-98	LOT3-98	LOF3-150-160*98	LKF3-150*98	LOC3-150*98
80HDG21.5 3Ø	260	179	195	547	502	98	36	LOH3-98	LOT3-98	LOF3-150-160*98	LKF3-150*98	LOC3-150*98
80HDG22.2 1Ø	260	179	195	622	577	98	45	LOH3-98	LOT3-98	LOF3-150-160*98	LKF3-150*98	LOC3-150*98
80HDG22.2 3Ø	260	179	195	547	502	98	40	LOH3-98	LOT3-98	LOF3-150-160*98	LKF3-150*98	LOC3-150*98
80HDG23.7 3Ø	260	179	195	577	532	98	45	LOH3-98	LOT3-98	LOF3-150-160*98	LKF3-150*98	LOC3-150*98

Dimensions-inch

Weight:lb

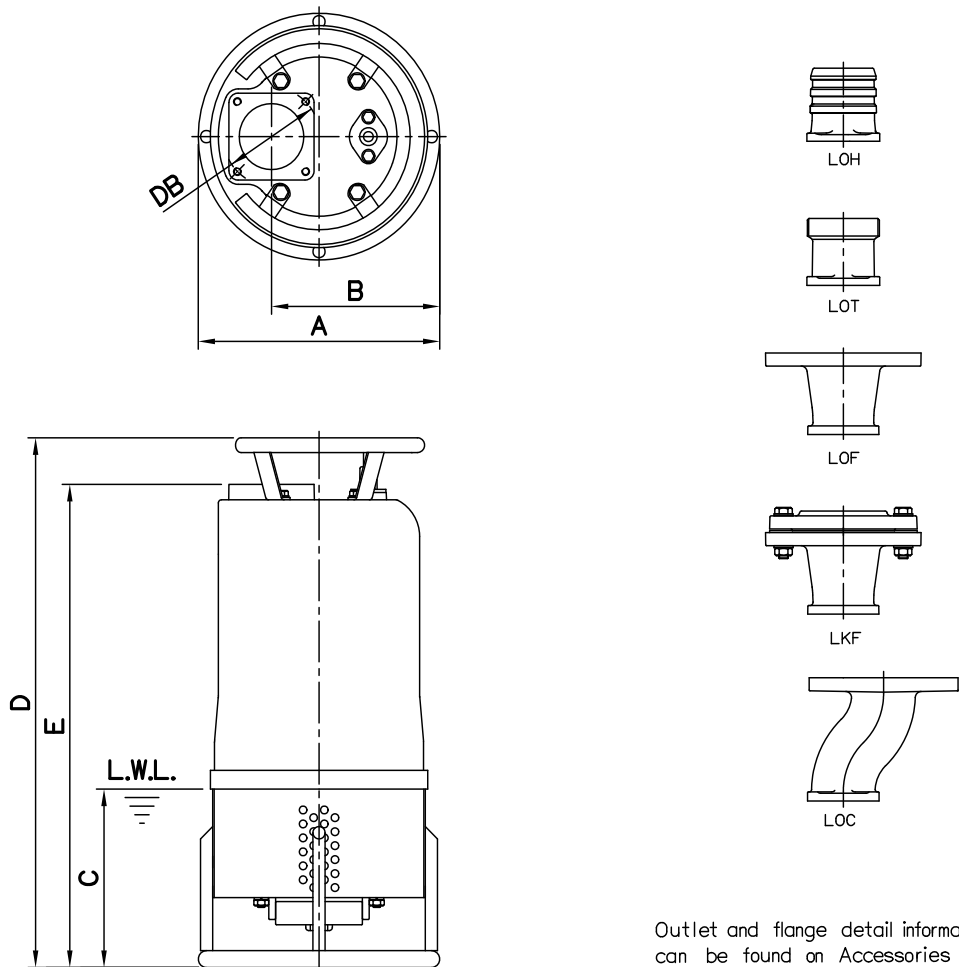
Model	A	B	C	D	E	DB	WT1	Optional Outlet Accessories				
								LOH	LOT	LOF	LKF	LOC
80HDG21.5 1Ø	10¼	7½	7½	23½	21½	3⅞	90	LOH3-98	LOT3-98	LOF3-150-160*98	LKF3-150*98	LOC3-150*98
80HDG21.5 3Ø	10¼	7½	7½	21¾	19¾	3⅞	79	LOH3-98	LOT3-98	LOF3-150-160*98	LKF3-150*98	LOC3-150*98
80HDG22.2 1Ø	10¼	7½	7½	24½	22½	3⅞	99	LOH3-98	LOT3-98	LOF3-150-160*98	LKF3-150*98	LOC3-150*98
80HDG22.2 3Ø	10¼	7½	7½	21¾	19¾	3⅞	88	LOH3-98	LOT3-98	LOF3-150-160*98	LKF3-150*98	LOC3-150*98
80HDG23.7 3Ø	10¼	7½	7½	22½	20½	3⅞	99	LOH3-98	LOT3-98	LOF3-150-160*98	LKF3-150*98	LOC3-150*98

DIMENSIONS

NO: S6HDG275030-00

MODEL: 80HDG25.5 & 100HDG25.5 / 27.5 & 150HDG25.5 / 27.5

50Hz 3Ø



Outlet and flange detail information can be found on Accessories section.

Dimensions-mm

Weight:kg

Model	A	B	C	D	E	DB	WT1	Optional Outlet Accessories				
								LOH	LOT	LOF	LKF	LOC
80HDG25.5	318	221	200	683	623	127	73	LOH3-127	LOT3-127	LOF3-150-160*127	LKF3-150*127	LOC3-150*127
100HDG25.5	318	221	200	683	623	127	76	LOH4-127	LOT4-127	LOF4-175-190*127	LKF4-175*127	-
100HDG27.5	318	221	200	683	623	127	81	LOH4-127	LOT4-127	LOF4-175-190*127	LKF4-175*127	-
150HDG25.5	318	221	200	683	623	127	79	LOH6-127	LOT6-127	LOF6-240*127	LKF6-240*127	-
150HDG27.5	318	221	200	683	623	127	82	LOH6-127	LOT6-127	LOF6-240*127	LKF6-240*127	-

Dimensions-inch

Weight:lb

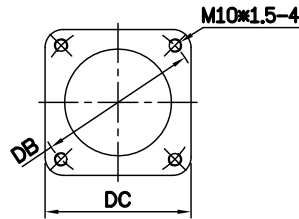
Model	A	B	C	D	E	DB	WT1	Optional Outlet Accessories				
								LOH	LOT	LOF	LKF	LOC
80HDG25.5	12½	8¼	7⅞	26⅞	24½	5	161	LOH3-127	LOT3-127	LOF3-150-160*127	LKF3-150*127	LOC3-150*127
100HDG25.5	12½	8¼	7⅞	26⅞	24½	5	168	LOH4-127	LOT4-127	LOF4-175-190*127	LKF4-175*127	-
100HDG27.5	12½	8¼	7⅞	26⅞	24½	5	179	LOH4-127	LOT4-127	LOF4-175-190*127	LKF4-175*127	-
150HDG25.5	12½	8¼	7⅞	26⅞	24½	5	174	LOH6-127	LOT6-127	LOF6-240*127	LKF6-240*127	-
150HDG27.5	12½	8¼	7⅞	26⅞	24½	5	181	LOH6-127	LOT6-127	LOF6-240*127	LKF6-240*127	-

DIMENSIONS

NO: SOHDG000000-00

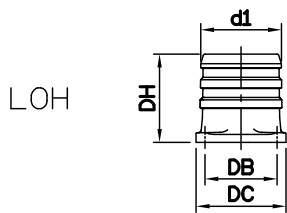
MODEL: Outlet (3"~6")

OUTLET CONNECTION

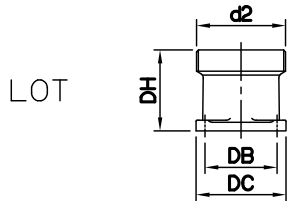


Model	mm		inch	
	DB	DC	DB	DC
1.5~3.7kW	98	89	3 ⁷ / ₈	3 ¹ / ₂
5.5~7.5kW	127	112	5	4 ⁷ / ₁₆

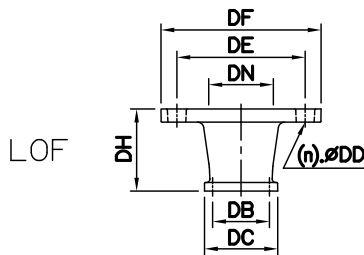
OPTIONAL OUTLET ACCESSORIES



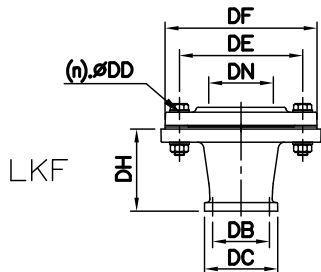
LOH	Dimensions-mm				kg	Dimensions-inch				lb
	d1	DB	DC	DH		d1	DB	DC	DH	
LOH3-98	80	98	89	100	2	3	3 ⁷ / ₈	3 ¹ / ₂	3 ¹⁵ / ₁₆	4
LOH3-127	80	127	112	110	2	3	5	4 ⁷ / ₁₆	4 ⁵ / ₁₆	4
LOH4-127	100	127	112	110	3	4	5	4 ⁷ / ₁₆	4 ⁵ / ₁₆	7
LOH6-127	150	127	112	172	5	6	5	4 ⁷ / ₁₆	6 ³ / ₄	11



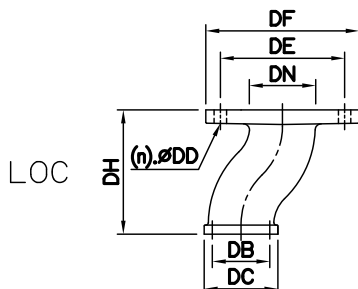
LOT	Dimensions-mm				kg	Dimensions-inch				lb	Thread Available		
	d2	DB	DC	DH		d2	DB	DC	DH		Weight	PF	PT
LOT3-98	80	98	89	80	2	3	3 ⁷ / ₈	3 ¹ / ₂	3 ¹ / ₈	4	PF	PT	NPT
LOT3-127	80	127	112	85	2	3	5	4 ⁷ / ₁₆	3 ³ / ₈	4	PF	PT	NPT
LOT4-127	100	127	112	85	2	4	5	4 ⁷ / ₁₆	3 ³ / ₈	4	PF	PT	NPT
LOT6-127	150	127	112	140	4	6	5	4 ⁷ / ₁₆	5 ¹ / ₂	9	PF	PT	NPT



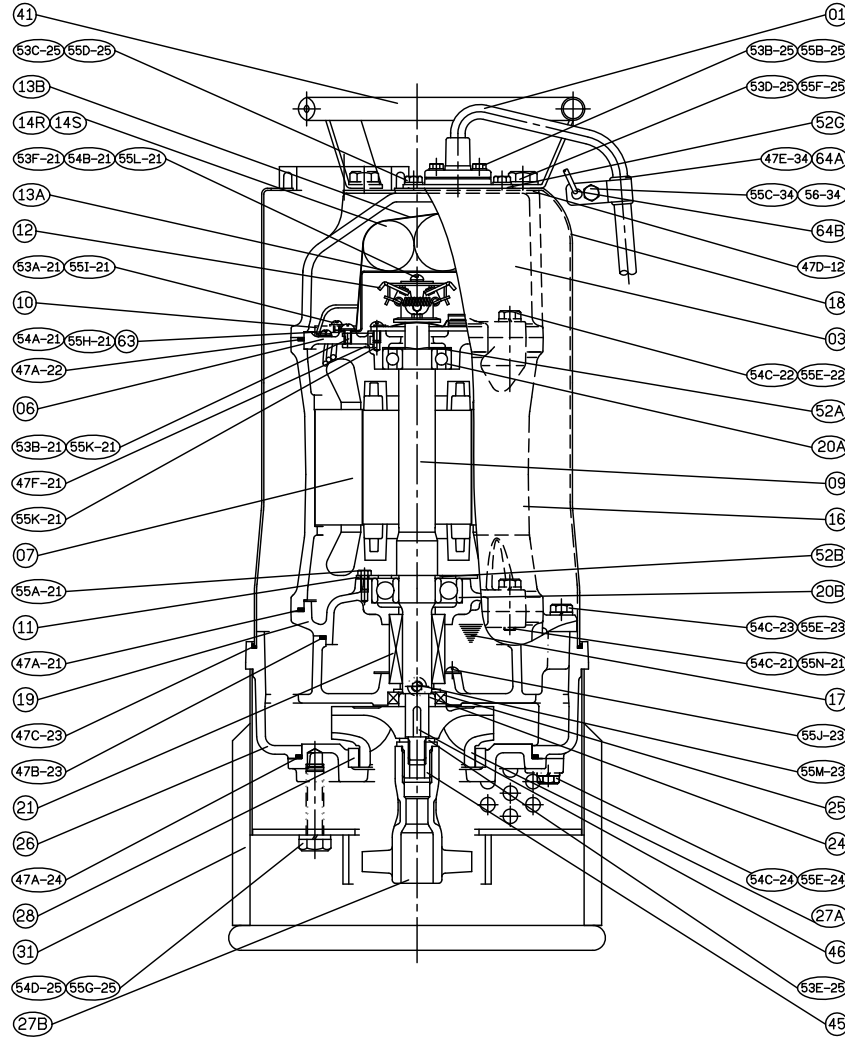
LOF	Dimensions-mm								kg	Dimensions-inch								lb	(n)QTY
	DN	DB	DC	DD	DE	DF	DH	Weight		DN	DB	DC	DD	DE	DF	DH	Weight		
LOF3-150-160*98	80	98	89	19	150~160	195	100	4	3	3 ⁷ / ₈	3 ¹ / ₂	3 ¹ / ₄	5 ³ / ₄ ~6 ⁵ / ₁₆	7 ¹ / ₁₆	3 ¹⁵ / ₁₆	9	8		
LOF3-150-160*127	80	127	112	19	150~160	195	110	7	3	5	4 ⁷ / ₁₆	3 ¹ / ₄	5 ³ / ₄ ~6 ⁵ / ₁₆	7 ¹ / ₁₆	4 ⁵ / ₁₆	15	8		
LOF4-175-190*127	100	127	112	19	175~190	225	110	10	4	5	4 ⁷ / ₁₆	3 ¹ / ₄	6 ⁷ / ₈ ~7 ¹ / ₂	8 ⁷ / ₈	4 ⁵ / ₁₆	22	8		
LOF6-240*127	150	127	112	23	240	280	140	14	6	5	4 ⁷ / ₁₆	7 ¹ / ₈	9 ¹ / ₁₆	11	5 ¹ / ₂	31	8		



LKF	Dimensions-mm								kg	Dimensions-inch								lb	(n)QTY	Thread Available	
	DN	DB	DC	DD	DE	DF	DH	Weight		DN	DB	DC	DD	DE	DF	DH	Weight			PT	NPT
LKF3-150*98	80	98	89	15	150	185	100	8	3	3 ⁷ / ₈	3 ¹ / ₂	9 ¹ / ₁₆	5 ³ / ₄	7 ⁵ / ₁₆	3 ¹⁵ / ₁₆	18	8	PT	NPT		
LKF3-150*127	80	127	112	15	150	185	110	8	3	5	4 ⁷ / ₁₆	9 ¹ / ₁₆	5 ³ / ₄	7 ⁵ / ₁₆	4 ⁵ / ₁₆	15	8	PT	NPT		
LKF4-175*127	100	127	112	15	175	210	110	10	4	5	4 ⁷ / ₁₆	9 ¹ / ₁₆	6 ⁷ / ₈	8 ³ / ₄	4 ⁵ / ₁₆	22	8	PT	NPT		
LKF6-240*127	150	127	112	23	240	280	140	20	6	5	4 ⁷ / ₁₆	7 ¹ / ₈	9 ¹ / ₁₆	11	5 ¹ / ₂	44	8	PT	NPT		

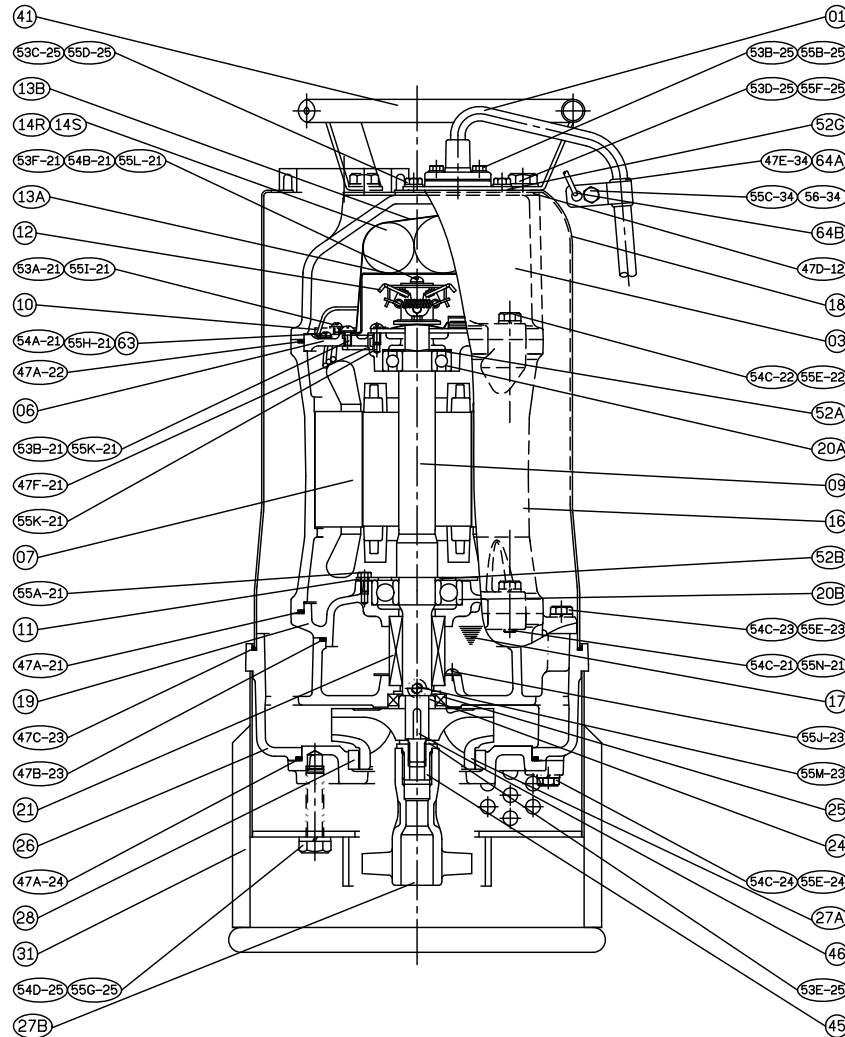


LOC	Dimensions-mm								kg	Dimensions-inch								lb	(n)QTY
	DN	DB	DC	DD	DE	DF	DH	Weight		DN	DB	DC	DD	DE	DF	DH	Weight		
LOC3-150*98	80	98	89	15	150	185	150	5	3	3 ⁷ / ₈	3 ¹ / ₂	9 ¹ / ₁₆	5 ³ / ₄	7 ⁵ / ₁₆	5 ³ / ₄	11	8		
LOC3-150*127	80	127	112	15	150	185	180	6	3	5	4 ⁷ / ₁₆	9 ¹ / ₁₆	5 ³ / ₄	7 ⁵ / ₁₆	7 ¹ / ₁₆	13	8		



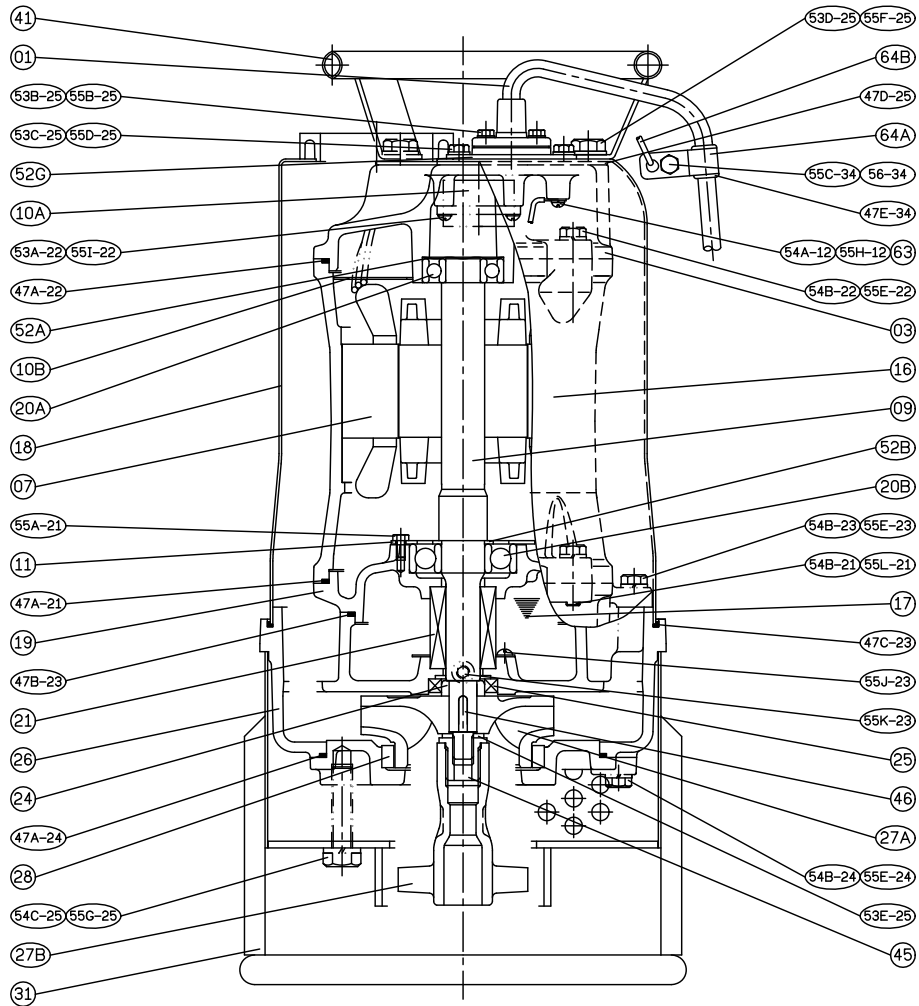
No.	Part name	Material	QTY	Remark
01	Cable		1	
03	Upper cover	FC200	1	
06	Bracket	FC200	1	
07	Stator		1	
09	Shaft end	SUS403	1	
10	Auto-cut Protector		1	
11	Bearing fixer	SPCC	1	
12	Centrifugal switch		1	
14R	Capacitor		1	
14S	Start capacitor		1	
16	Motor frame	FC200	1	
17	Lubricant			
18	Outer cover	SUS304	1	
19	Bearing bracket	FC200	1	

No.	Part name	Material	QTY	Remark
20A	Bearing		1	
20B	Bearing		1	
21	M.seal	CA / CE & SIC / SIC	1	
24	Oil seal bush	SUS403	1	
25	Oil seal	SUS304+NBR	1	
26	Casing	FC200	1	
27A	Impeller	HiCrFC	1	
27B	Agitator	FCD700	1	
28	Casing cover	FC200	1	
	+Wear ring	HiCrFC	1	
31	Strainer	SUS304	1	
41	Handle	SUS304	1	
46	Impeller key	SUS304	1	
47	Gasket			



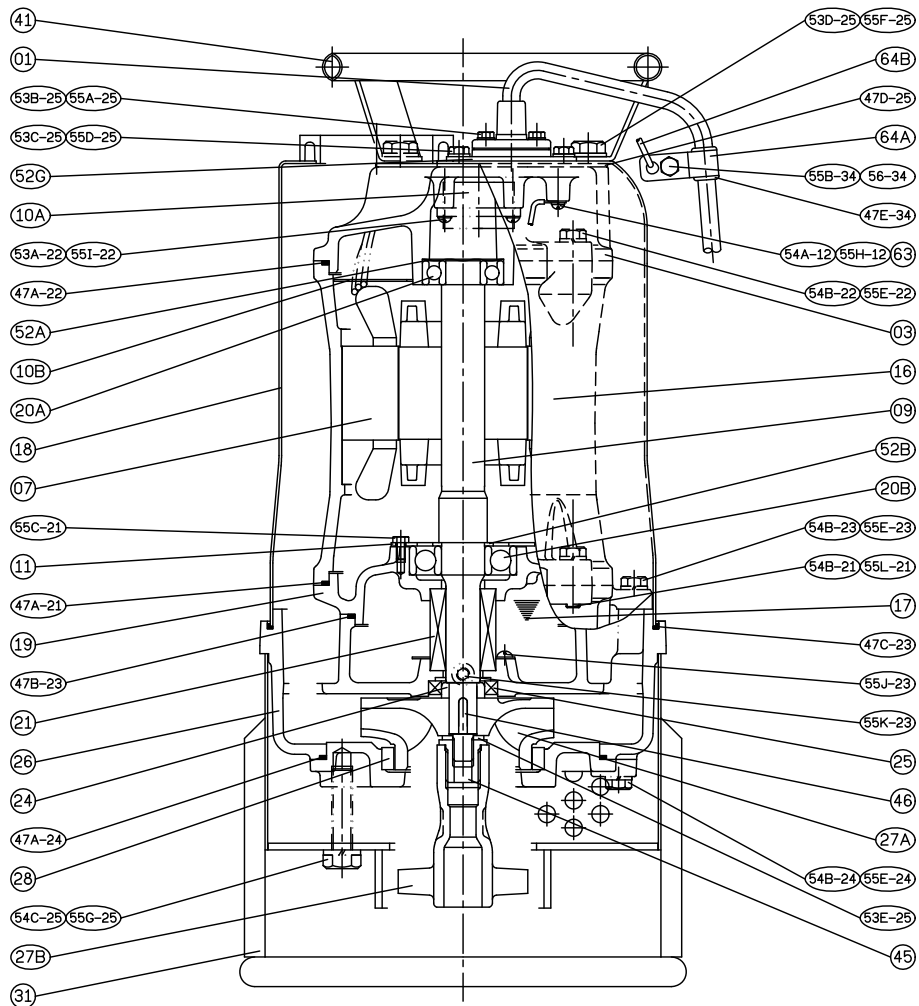
No.	Part name	Material	QTY	Remark
01	Cable		1	
03	Upper cover	FC200	1	
06	Bracket	FC200	1	
07	Stator		1	
09	Shaft end	SUS403	1	
10	Auto-cut Protector		1	
11	Bearing fixer	SPCC	1	
12	Centrifugal switch		1	
14R	Capacitor		1	
14S	Start capacitor		1	
16	Motor frame	FC200	1	
17	Lubricant			
18	Outer cover	SUS304	1	
19	Bearing bracket	FC200	1	

No.	Part name	Material	QTY	Remark
20A	Bearing		1	
20B	Bearing		1	
21	M.seal	CA / CE & SIC / SIC	1	
24	Oil seal bush	SUS403	1	
25	Oil seal	SUS304+NBR	1	
26	Casing	FC200	1	
27A	Impeller	HiCrFC	1	
27B	Agitator	FCD700	1	
28	Casing cover	FC200	1	
	+Wear ring	HiCrFC	1	
31	Strainer	SUS304	1	
41	Handle	SUS304	1	
46	Impeller key	SUS304	1	
47	Gasket			



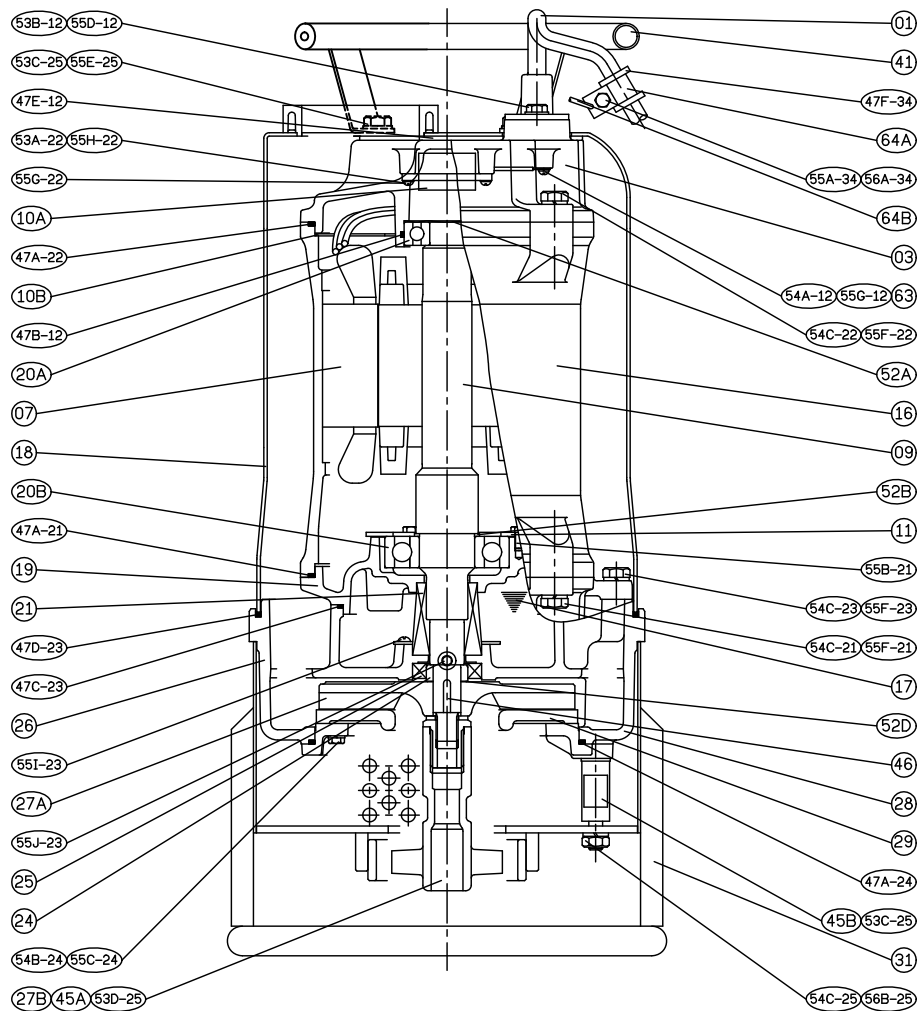
No.	Part name	Material	QTY	Remark
01	Cable		1	
03	Upper cover	FC200	1	
07	Stator		1	
09	Shaft end	SUS403	1	
10A	Auto-cut Protector		1	
10B	Protective Plate		1	
11	Bearing fixer	SPCC	1	
16	Motor frame	FC200	1	
17	Lubricant			
18	Outer cover	SUS304	1	
19	Bearing bracket	FC200	1	
20A	Bearing		1	
20B	Bearing		1	

No.	Part name	Material	QTY	Remark
21	M.seal	CA / CE & SIC / SIC	1	
24	Oil seal bush	SUS403	1	
25	Oil seal	SUS304+NBR	1	
26	Casing	FC200	1	
27A	Impeller	HiCrFC	1	
27B	Agitator	FCD700	1	
28	Casing cover	FC200	1	
	+Wear ring	HiCrFC	1	
31	Strainer	SUS304	1	
41	Handle	SUS304	1	
46	Impeller key	SUS304	1	
47	Gasket			



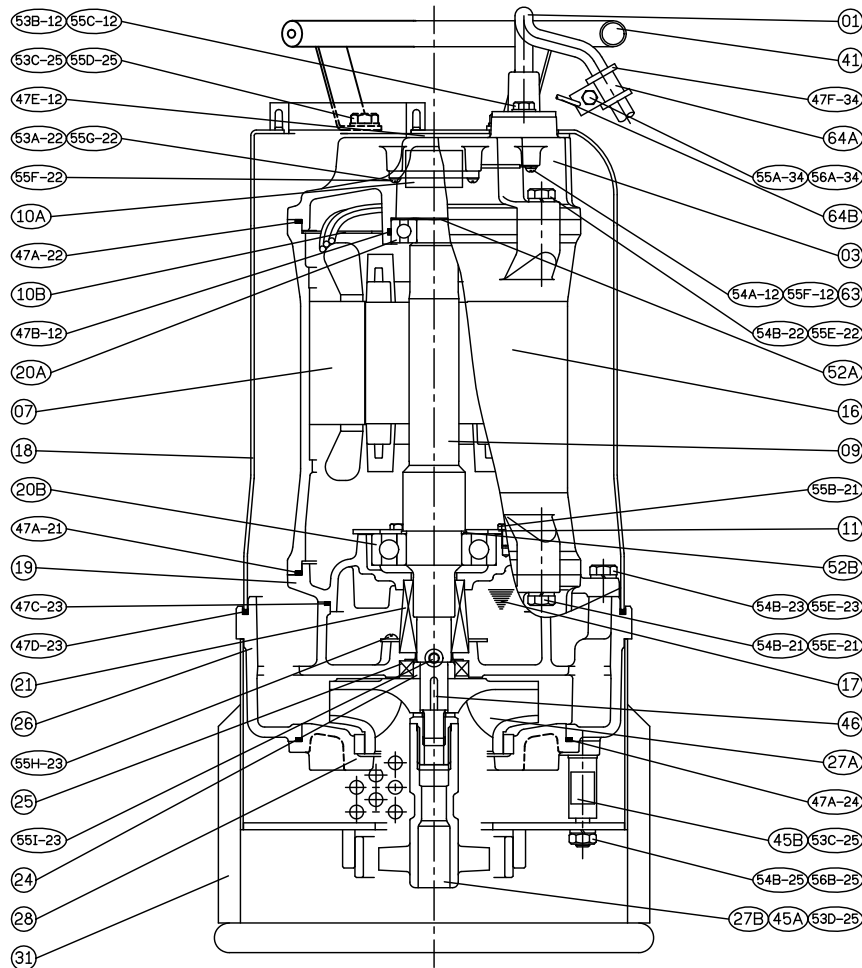
No.	Part name	Material	QTY	Remark
01	Cable		1	
03	Upper cover	FC200	1	
07	Stator		1	
09	Shaft end	SUS304	1	
10A	Auto-cut Protector		1	
10B	Protective Plate		1	
11	Bearing fixer	SPCC	1	
16	Motor frame	FC200	1	
17	Lubricant			
18	Outer cover	SUS304	1	
19	Bearing bracket	FC200	1	
20A	Bearing		1	
20B	Bearing		1	

No.	Part name	Material	QTY	Remark
21	M.seal	CA / CE & SIC / SIC	1	
24	Oil seal bush	SUS403	1	
25	Oil seal	SUS304+NBR	1	
26	Casing	FC200	1	
27A	Impeller	HiCrFC	1	
27B	Agitator	FCD700	1	
28	Casing cover	FC200	1	
	+Wear ring	HiCrFC	1	
31	Strainer	SUS304	1	
41	Handle	SUS304	1	
46	Impeller key	SUS304	1	
47	Gasket			



No.	Part name	Material	QTY	Remark
01	Cable		1	
03	Upper cover	FC200	1	
07	Stator		1	
09	Shaft end	SUS304	1	
10A	Auto-cut Protector		1	
10B	Protective Plate		1	
11	Bearing fixer	SPCC	1	
16	Motor frame	FC200	1	
17	Lubricant			
18	Outer cover	SUS304	1	
19	Bearing bracket	FC200	1	
20A	Bearing		1	
20B	Bearing		1	

No.	Part name	Material	QTY	Remark
21	M.seal	CA / CE & SIC / SIC	1	
24	Oil seal bush	SUS403	1	
25	Oil seal	SUS304+NBR	1	
26	Casing	FC200	1	
27A	Impeller	HiCrFC	1	
27B	Agitator	FCD700	1	
28	Casing cover	FC200	1	
29	Wear plate	HiCrFC	1	
31	Strainer	SUS304	1	
41	Handle	SUS304	1	
46	Impeller key	SUS304	1	
47	Gasket			



No.	Part name	Material	QTY	Remark
01	Cable		1	
03	Upper cover	FC200	1	
07	Stator		1	
09	Shaft end	SUS304	1	
10A	Auto-cut Protector		1	
10B	Protective Plate		1	
11	Bearing fixer	SPCC	1	
16	Motor frame	FC200	1	
17	Lubricant			
18	Outer cover	SUS304	1	
19	Bearing bracket	FC200	1	
20A	Bearing		1	
20B	Bearing		1	

No.	Part name	Material	QTY	Remark
21	M.seal	CA / CE & SIC / SIC	1	
24	Oil seal bush	SUS403	1	
25	Oil seal	SUS304+NBR	1	
26	Casing	FC200	1	
27A	Impeller	HiCrFC	1	
27B	Agitator	FCD700	1	
28	Casing cover	FC200	1	
	+Wear ring	HiCrFC	1	
31	Strainer	SUS304	1	
41	Handle	SUS304	1	
46	Impeller key	SUS304	1	
47	Gasket			



Professionalism • Innovation • Service • Commitment

A series of horizontal dotted lines spanning the width of the page, providing a template for handwritten notes or answers.



Professionalism • Innovation • Service • Commitment

A series of horizontal dotted lines spanning the width of the page, intended for writing or notes.