

HCP PUMP

Model	80HDG21.5
Series	HDG
Frequency	50
Phase	1
Discharge	80 mm (3")



Motor Data

Input Power—P1	2.1 kW
Rated Power—P2	1.5 kW
Insulation Class	F
Voltage Range	220~240V
Max. Starts Per Hour	10
Rated Speed (rpm)	2800
Start Method	CAPACITOR
Ingress Protection Code	CAPACITOR
Explosion-Proof	IP68

Technology

Impeller Type	Close
Mechanical Seal	Double
Lubricating Oil VG32	500 CC
Solid Passage	10 mm
Cooling Type	Self-cooling

Material

Motor Frame	FC200 (GG-20)
Shaft	SUS403 (X5Cr13)
Casing	FC200 (GG-20)
Impeller	HiCrFC
Mechanical Seal	CA/CE&SiC/SiC
Cable	VCT,H07RN-F
Upper and Lower Bearing	6204ZZ,6305ZZ

Liquid

Maximum Ambient Temperature	0~40°C (32~104°F)
Maximum Installation Depth	20m (66ft)
Highest Liquid Temperature	40 °C (104°F)
Liquid Transported	Construction drainage

Others

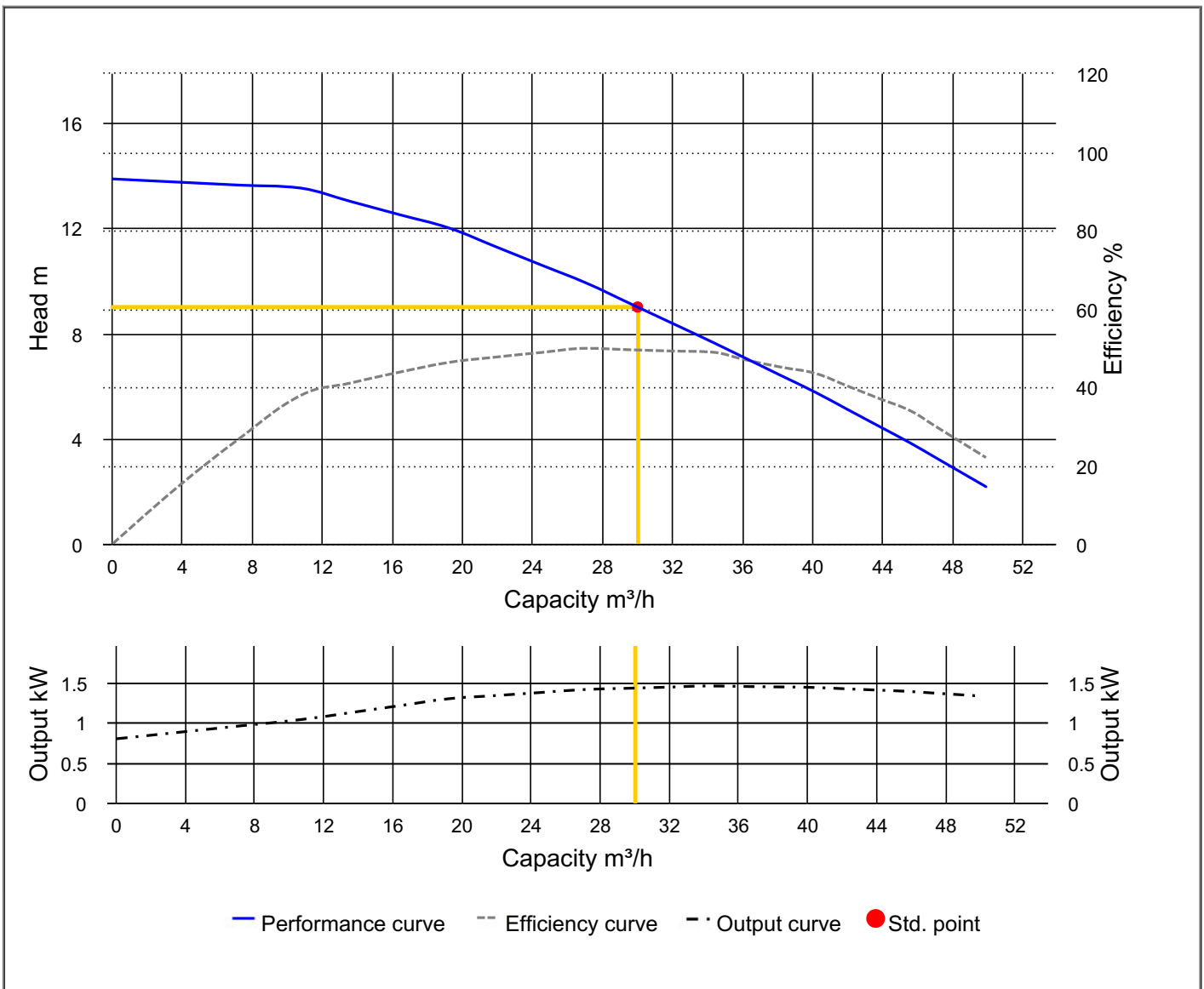
Protection Device	Auto-cut Protector
Moisture Sensor	



HCP PUMP

PUMP PERFORMANCE CURVES

Model	80HDG21.5	File NO.	20210303222655
Frequency	50 Hz	Ver NO.	202003060911
Discharge	3" / 80 mm	REFERENCE SPECIFICATION	
Output	2 HP / 1.5 kW	Output	1.43 kW
Std. Head	9 m	Efficiency	49.5 %
Std. Capacity	30 m ³ /h		
Phase / Volt	1 Ø / 220 V		
Rated Current	10.40 A		
Pole / rpm	2 P / 2800 rpm		
Start Method	CAPACITOR		
Insulation Class	F		

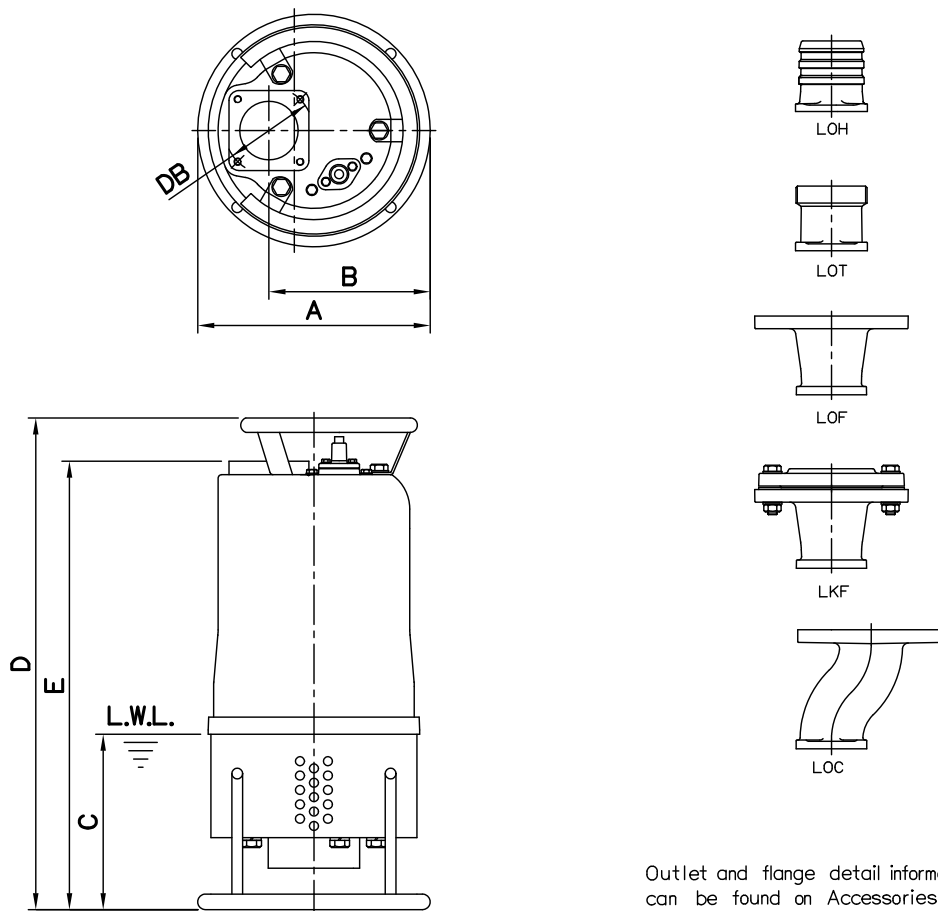


DIMENSIONS

NO: S3HDG237030-00

MODEL: 80HDG21.5 / 22.2 / 23.7

60Hz 1Ø / 3Ø



Outlet and flange detail information can be found on Accessories section.

Dimensions-mm

Weight:kg

Model	A	B	C	D	E	DB	WT1	Optional Outlet Accessories				
								LOH	LOT	LOF	LKF	LOC
80HDG21.5 1Ø	260	179	195	592	546	98	41	LOH3-98	LOT3-98	LOF3-150-160*98	LKF3-150*98	LOC3-150*98
80HDG21.5 3Ø	260	179	195	547	502	98	36	LOH3-98	LOT3-98	LOF3-150-160*98	LKF3-150*98	LOC3-150*98
80HDG22.2 1Ø	260	179	195	622	577	98	45	LOH3-98	LOT3-98	LOF3-150-160*98	LKF3-150*98	LOC3-150*98
80HDG22.2 3Ø	260	179	195	547	502	98	40	LOH3-98	LOT3-98	LOF3-150-160*98	LKF3-150*98	LOC3-150*98
80HDG23.7 3Ø	260	179	195	577	532	98	45	LOH3-98	LOT3-98	LOF3-150-160*98	LKF3-150*98	LOC3-150*98

Dimensions-inch

Weight:lb

Model	A	B	C	D	E	DB	WT1	Optional Outlet Accessories				
								LOH	LOT	LOF	LKF	LOC
80HDG21.5 1Ø	10¼	7½ ₁₆	7¾ ₁₆	23¾ ₁₆	21½	3¾	90	LOH3-98	LOT3-98	LOF3-150-160*98	LKF3-150*98	LOC3-150*98
80HDG21.5 3Ø	10¼	7½ ₁₆	7¾ ₁₆	21¾ ₁₆	19¾	3¾	79	LOH3-98	LOT3-98	LOF3-150-160*98	LKF3-150*98	LOC3-150*98
80HDG22.2 1Ø	10¼	7½ ₁₆	7¾ ₁₆	24½	22¾ ₁₆	3¾	99	LOH3-98	LOT3-98	LOF3-150-160*98	LKF3-150*98	LOC3-150*98
80HDG22.2 3Ø	10¼	7½ ₁₆	7¾ ₁₆	21¾ ₁₆	19¾	3¾	88	LOH3-98	LOT3-98	LOF3-150-160*98	LKF3-150*98	LOC3-150*98
80HDG23.7 3Ø	10¼	7½ ₁₆	7¾ ₁₆	22¾ ₁₆	20¾ ₁₆	3¾	99	LOH3-98	LOT3-98	LOF3-150-160*98	LKF3-150*98	LOC3-150*98

L.W.L.:Lowest Running Water Level

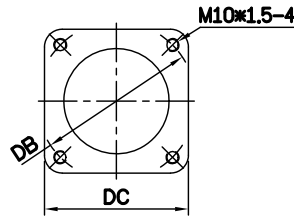
WT1:Pump Weight(Without Cable)

DIMENSIONS

NO: SOHDG000000-00

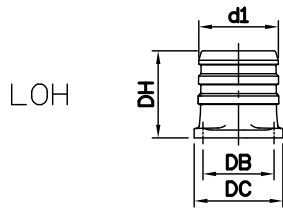
MODEL: Outlet (3"~6")

OUTLET CONNECTION

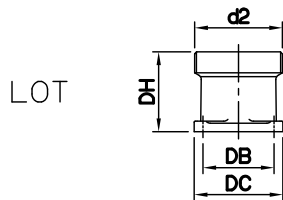


Model	mm		inch	
	DB	DC	DB	DC
1.5~3.7kW	98	89	3 ⁷ / ₈	3 ¹ / ₂
5.5~7.5kW	127	112	5	4 ¹ / ₁₆

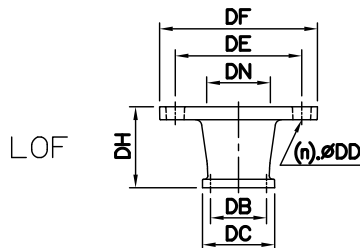
OPTIONAL OUTLET ACCESSORIES



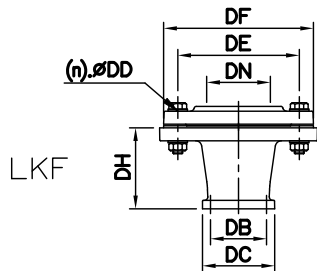
LOH	Dimensions-mm				kg	Dimensions-inch				lb
	d1	DB	DC	DH		d1	DB	DC	DH	
LOH3-98	80	98	89	100	2	3	3 ⁷ / ₈	3 ¹ / ₂	3 ¹⁵ / ₁₆	4
LOH3-127	80	127	112	110	2	3	5	4 ⁷ / ₁₆	4 ⁵ / ₁₆	4
LOH4-127	100	127	112	110	3	4	5	4 ⁷ / ₁₆	4 ⁵ / ₁₆	7
LOH6-127	150	127	112	172	5	6	5	4 ⁷ / ₁₆	6 ³ / ₄	11



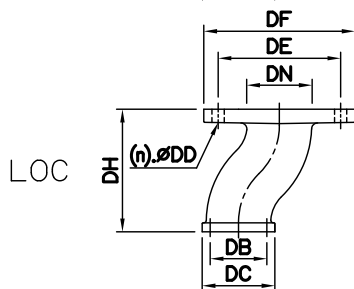
LOT	Dimensions-mm				kg	Dimensions-inch				lb	Thread Available		
	d2	DB	DC	DH		d2	DB	DC	DH		Weight		
LOT3-98	80	98	89	80	2	3	3 ⁷ / ₈	3 ¹ / ₂	3 ¹ / ₂	4	PF	PT	NPT
LOT3-127	80	127	112	85	2	3	5	4 ⁷ / ₁₆	3 ³ / ₈	4	PF	PT	NPT
LOT4-127	100	127	112	85	2	4	5	4 ⁷ / ₁₆	3 ³ / ₈	4	PF	PT	NPT
LOT6-127	150	127	112	140	4	6	5	4 ⁷ / ₁₆	5 ¹ / ₂	9	PF	PT	NPT



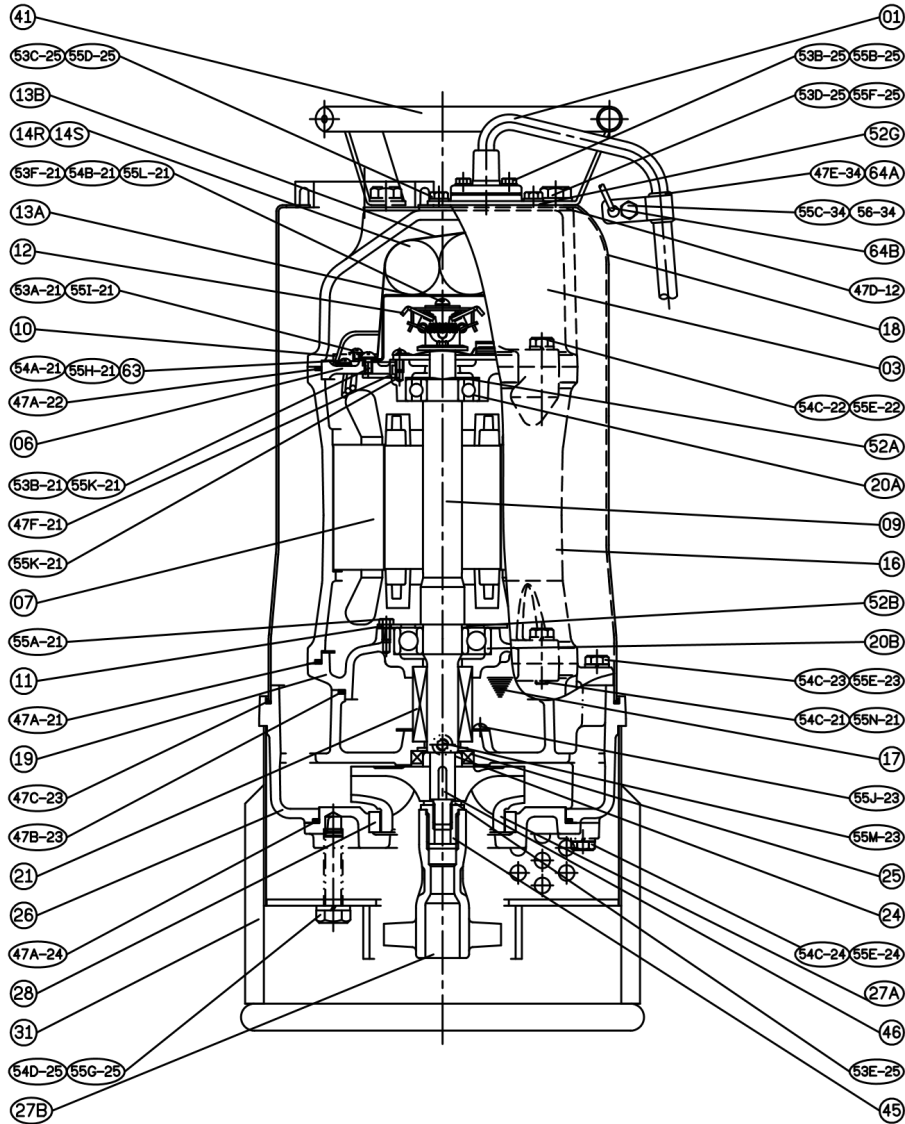
LOF	Dimensions-mm							kg	Dimensions-inch							lb	(n)QTY
	DN	DB	DC	DD	DE	DF	DH		Weight	DN	DB	DC	DD	DE	DF		
LOF3-150-160*98	80	98	89	19	150~160	195	100	4	3	3 ⁷ / ₈	3 ¹ / ₂	3/4	5 ³ / ₄ ~6 ⁵ / ₁₆	7 ¹ / ₁₆	3 ¹⁵ / ₁₆	9	8
LOF3-150-160*127	80	127	112	19	150~160	195	110	7	3	5	4 ⁷ / ₁₆	3/4	5 ³ / ₄ ~6 ⁵ / ₁₆	7 ¹ / ₁₆	4 ⁵ / ₁₆	15	8
LOF4-175-190*127	100	127	112	19	175~190	225	110	10	4	5	4 ⁷ / ₁₆	3/4	6 ⁷ / ₈ ~7 ¹ / ₂	8 ⁷ / ₈	4 ⁵ / ₁₆	22	8
LOF6-240*127	150	127	112	23	240	280	140	14	6	5	4 ⁷ / ₁₆	7/8	9 ¹ / ₁₆	11	5 ¹ / ₂	31	8



LKF	Dimensions-mm							kg	Dimensions-inch							lb	(n)QTY	Thread Available
	DN	DB	DC	DD	DE	DF	DH		Weight	DN	DB	DC	DD	DE	DF			
LKF3-150*98	80	98	89	15	150	185	100	8	3	3 ⁷ / ₈	3 ¹ / ₂	1/16	5 ³ / ₄	7 ¹ / ₁₆	3 ¹⁵ / ₁₆	18	8	PT NPT
LKF3-150*127	80	127	112	15	150	185	110	8	3	5	4 ⁷ / ₁₆	1/16	5 ³ / ₄	7 ¹ / ₁₆	4 ⁵ / ₁₆	15	8	PT NPT
LKF4-175*127	100	127	112	15	175	210	110	10	4	5	4 ⁷ / ₁₆	1/16	6 ⁷ / ₈	8 ¹ / ₄	4 ⁵ / ₁₆	22	8	PT NPT
LKF6-240*127	150	127	112	23	240	280	140	20	6	5	4 ⁷ / ₁₆	1/8	9 ¹ / ₁₆	11	5 ¹ / ₂	44	8	PT NPT



LOC	Dimensions-mm							kg	Dimensions-inch							lb	(n)QTY
	DN	DB	DC	DD	DE	DF	DH		Weight	DN	DB	DC	DD	DE	DF		
LOC3-150*98	80	98	89	15	150	185	150	5	3	3 ⁷ / ₈	3 ¹ / ₂	1/16	5 ³ / ₄	7 ¹ / ₁₆	5 ³ / ₄	11	8
LOC3-150*127	80	127	112	15	150	185	180	6	3	5	4 ⁷ / ₁₆	1/16	5 ³ / ₄	7 ¹ / ₁₆	7 ¹ / ₁₆	13	8



NO.	Part name	Material	QTY
01	Cable		1
03	Upper Cover	FC200	1
06	Bracket	FC200	1
07	Stator		1
09	Shaft End	SUS403	1
10	Auto-cut Protector		1
11	Bearing Fixer	SPCC	1
12	Centrifugal Switch		1
14R	Capacitor		1
14S	Start Capacitor		1
16	Motor Frame	FC200	1
17	Lubricant		
18	Outer Cover	SUS304	1
19	Bearing Bracket	FC200	1

NO.	Part name	Material	QTY
20A	Bearing		1
20B	Bearing		1
21	M. Seal	CA/CE & SiC/SiC	1
24	Oil Seal Bush	SUS403	1
25	Oil Seal	SUS304+NBR	1
26	Casing	FC200	1
27A	Impeller	HiCrFC	1
27B	Agitator	FCD700	1
28	Casing Cover+Wear Ring	FC200+HiCrFC	1
31	Strainer	SUS304	1
41	Handle	SUS304	1
46	Impeller Key	SUS304	1
47	Gasket Kit		