

HCP PUMP

Model	50HD21.1
Series	HD
Frequency	50
Phase	1
Discharge	50 mm



Motor Data

Input Power—P1	1.65 kW
Rated Power—P2	1.1 kW
Insulation Class	F
Voltage Range	220~240V
Max. Starts Per Hour	10
Rated Speed (rpm)	2840
Start Method	CAPACITOR
Ingress Protection Code	CAPACITOR
Explosion-Proof	IP68

Technology

Impeller Type	Open
Mechanical Seal	Double
Lubricating Oil VG32	320 CC
Solid Passage	7.5 mm
Cooling Type	Self-cooling

Material

Motor Frame	SUS304
Shaft	SUS403
Casing	FC200
Impeller	HiCrFC
Mechanical Seal	CA/CE&SiC/SiC
Cable	VCT,H07RN-F
Upper and Lower Bearing	6202ZZ,6204ZZ

Liquid

Maximum Ambient Temperature	0~40°C
Maximum Installation Depth	20 m
Highest Liquid Temperature	40 °C
Liquid Transported	Construction drainage

Others

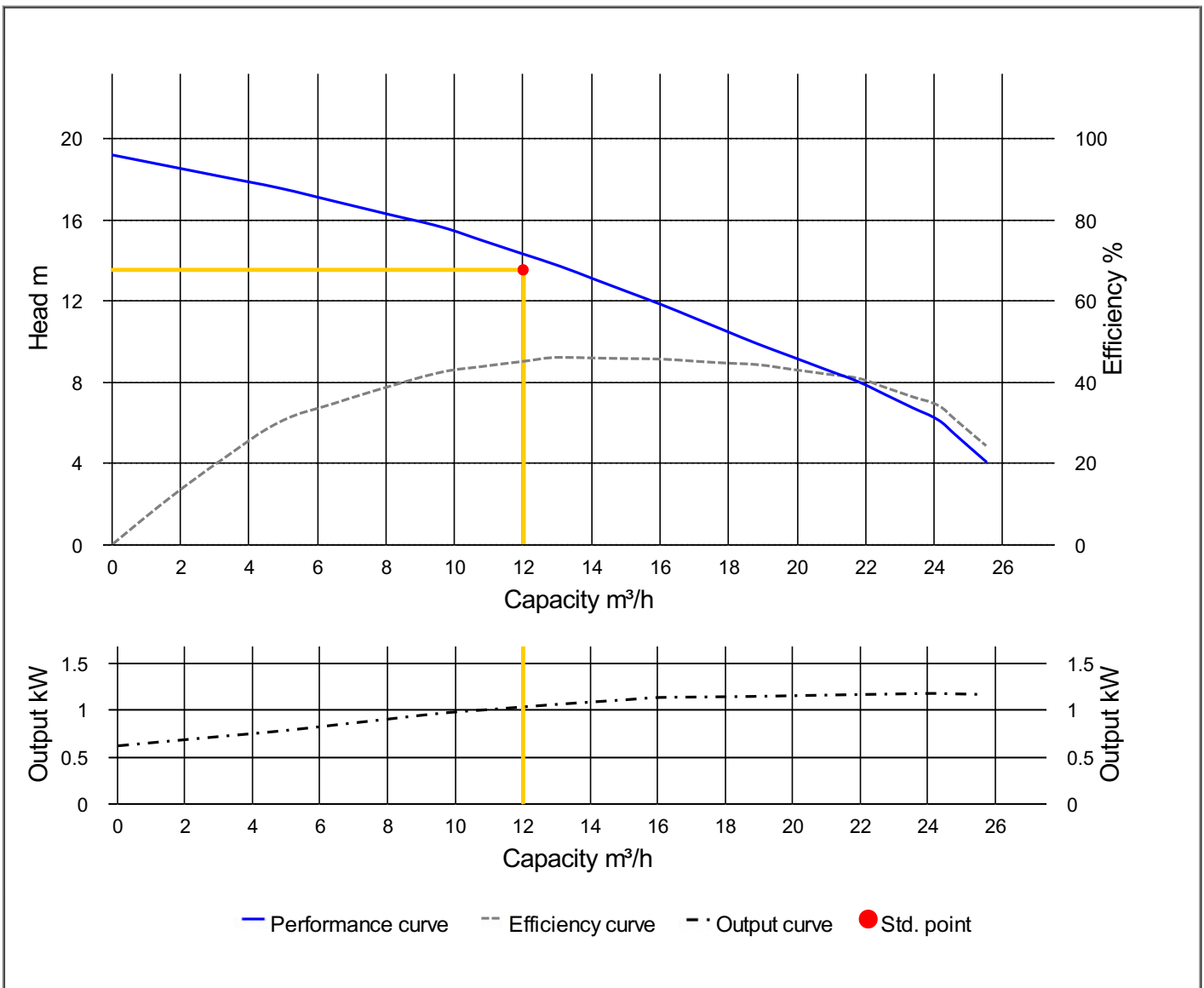
Protection Device	Auto-cut Protector
Moisture Sensor	

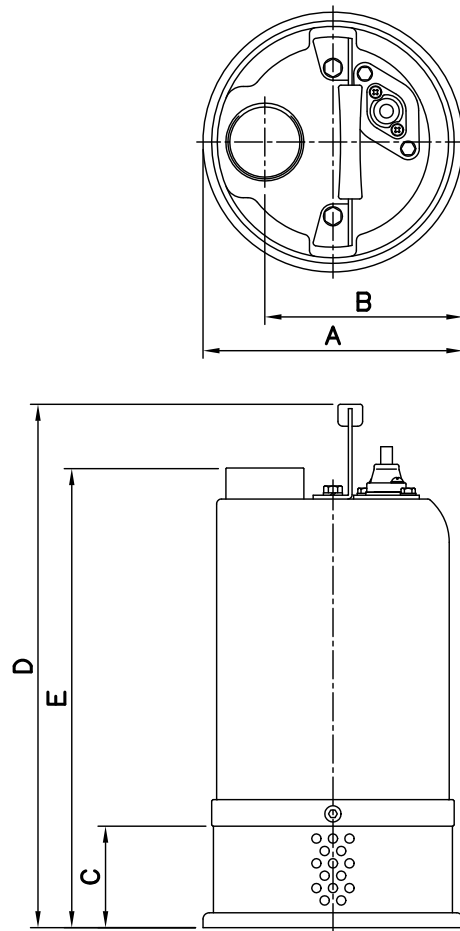


HCP PUMP

PUMP PERFORMANCE CURVES

Model	50HD21.1	File NO.	20210125221538
Frequency	50 Hz	Ver NO.	202003060911
Discharge	2" / 50 mm	REFERENCE SPECIFICATION	
Output	1.5 HP / 1.1 kW	Output	1.03 kW
Std. Head	13.5 m	Efficiency	45.3 %
Std. Capacity	12 m ³ /h		
Phase / Volt	1 Ø / 220 V		
Rated Current	8.40 A		
Pole / rpm	2 P / 2840 rpm		
Start Method	CAPACITOR		
Insulation Class	F		





Pump	
Female Thread	
PF	NPT

Dimensions-mm								Weight:kg
Model	DN	A	B	C	D	E	WT1	
50HD21.1 1Ø	50	210	160	85	482	431	28	
50HD21.1 3Ø	50	210	160	85	423	372	24	

Dimensions-inch								Weight:lb
Model	DN	A	B	C	D	E	WT1	
50HD21.1 1Ø	2	8 1/4	6 5/16	3 3/8	19	16 7/8	62	
50HD21.1 3Ø	2	8 1/4	6 5/16	3 3/8	16 5/8	14 3/8	53	

L.W.L.:Lowest Running Water Level

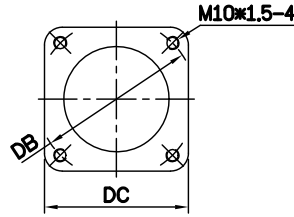
WT1:Pump Weight(Without Cable)
WT2:Elbow Set Weight

DIMENSIONS

NO: SOHD000000-00

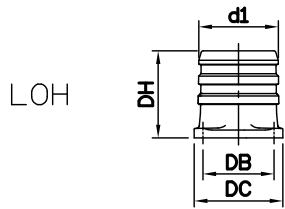
MODEL: Outlet (2"~6")

OUTLET CONNECTION

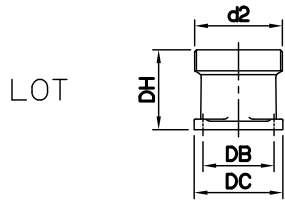


Model	mm		inch	
	DB	DC	DB	DC
1.5~3.7kW	98	89	3 ⁷ / ₈	3 ¹ / ₂
5.5~7.5kW	127	112	5	4 ¹ / ₁₆

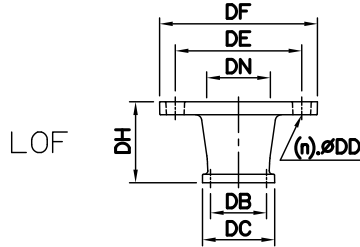
OPTIONAL OUTLET ACCESSORIES



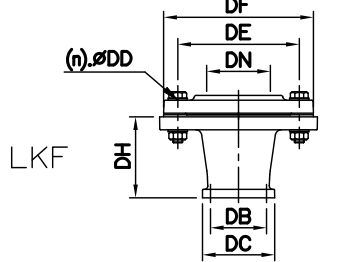
LOH	Dimensions-mm					kg	Dimensions-inch					b
	d1	DB	DC	DH	Weight		d1	DB	DC	DH	Weight	
LOH2-98	50	98	89	80	1	2	3 ⁷ / ₈	3 ¹ / ₂	3 ¹ / ₈	2		
LOH3-98	80	98	89	100	2	3	3 ⁷ / ₈	3 ¹ / ₂	3 ¹⁵ / ₁₆	4		
LOH3-127	80	127	112	110	2	3	5	4 ⁷ / ₁₆	4 ⁵ / ₁₆	4		
LOH4-98	100	98	89	115	2	4	3 ⁷ / ₈	3 ¹ / ₂	4 ¹ / ₂	4		
LOH4-127	100	127	112	110	3	4	5	4 ⁷ / ₁₆	4 ⁵ / ₁₆	7		
LOH6-127	150	127	112	172	5	6	5	4 ⁷ / ₁₆	6 ³ / ₄	11		
LOH4-145	100	145	130	120	3	4	5 ¹ / ₁₆	5 ¹ / ₈	4 ³ / ₄	7		
LOH6-145	150	145	130	175	5	6	5 ¹ / ₁₆	5 ¹ / ₈	6 ⁷ / ₈	11		



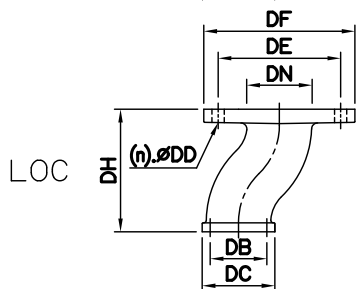
LOT	Dimensions-mm					kg	Dimensions-inch					b	Thread Available
	d2	DB	DC	DH	Weight		d2	DB	DC	DH	Weight		
LOT2-98	50	98	89	80	1	2	3 ⁷ / ₈	3 ¹ / ₂	3 ¹ / ₈	2	PF	PT	NPT
LOT3-98	80	98	89	80	2	3	3 ⁷ / ₈	3 ¹ / ₂	3 ¹ / ₈	4	PF	PT	NPT
LOT3-127	80	127	112	85	2	3	5	4 ⁷ / ₁₆	3 ³ / ₈	4	PF	PT	NPT
LOT4-98	100	98	89	100	2	4	3 ⁷ / ₈	3 ¹ / ₂	3 ¹⁵ / ₁₆	4	PF	PT	NPT
LOT4-127	100	127	112	85	2	4	5	4 ⁷ / ₁₆	3 ³ / ₈	4	PF	PT	NPT
LOT6-127	150	127	112	140	4	6	5	4 ⁷ / ₁₆	5 ¹ / ₂	9	PF	PT	NPT
LOT4-145	100	145	130	100	3	4	5 ¹ / ₁₆	5 ¹ / ₈	3 ¹⁵ / ₁₆	7	PF	PT	NPT
LOT6-145	150	145	130	150	5	6	5 ¹ / ₁₆	5 ¹ / ₈	5 ⁷ / ₈	11	PF	PT	NPT



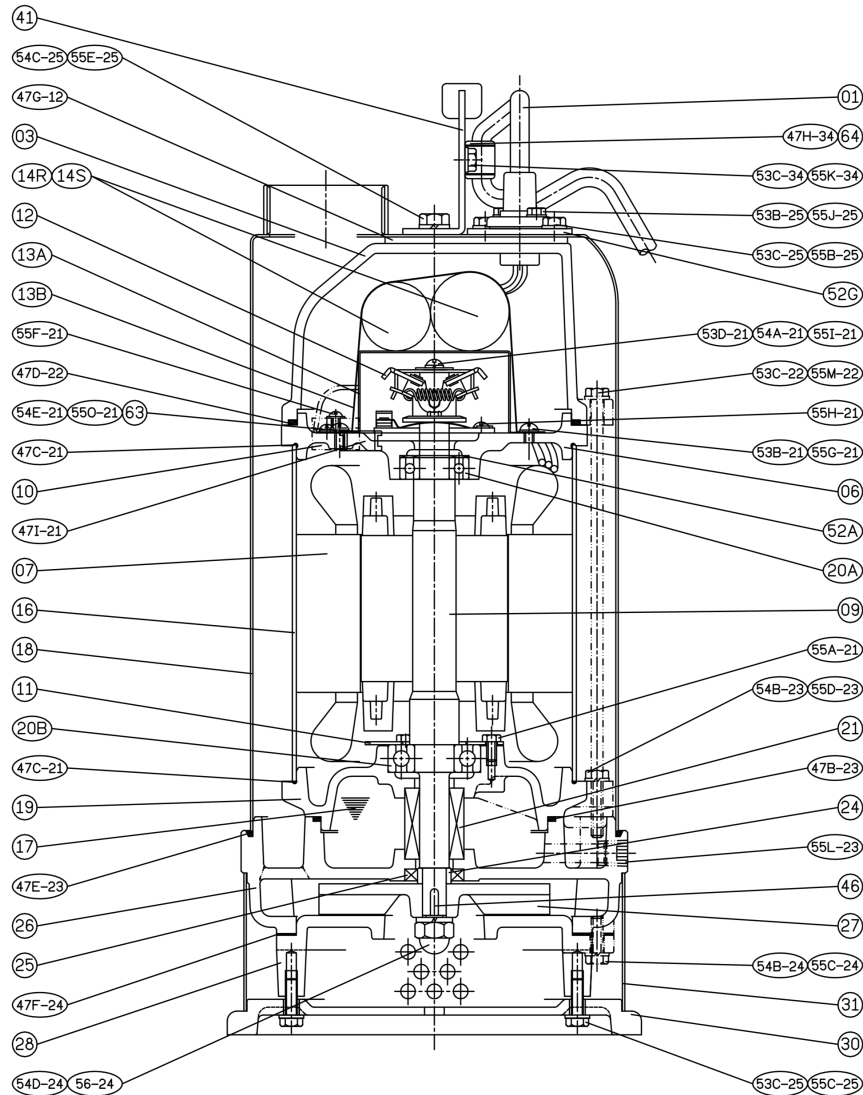
LOF	Dimensions-mm								kg	Dimensions-inch								b	(n)QTY
	DN	DB	DC	DD	DE	DF	DH	Weight		DN	DB	DC	DD	DE	DF	DH	Weight		
LOF2-120-125*98	50	98	89	19	120~125	160	90	3	2	3 ⁷ / ₈	3 ¹ / ₂	3 ³ / ₄	4 ³ / ₄ ~4 ¹ / ₁₆	6 ⁵ / ₁₆	3 ³ / ₁₆	7	4		
LOF3-150-160*98	80	98	89	19	150~160	195	100	4	3	3 ⁷ / ₈	3 ¹ / ₂	3 ³ / ₄	5 ³ / ₄ ~6 ⁵ / ₁₆	7 ¹ / ₁₆	3 ¹⁵ / ₁₆	9	8		
LOF3-150-160*127	80	127	112	19	150~160	195	110	7	3	5	4 ⁷ / ₁₆	3 ³ / ₄	5 ³ / ₄ ~6 ⁵ / ₁₆	7 ¹ / ₁₆	4 ⁵ / ₁₆	15	8		
LOF4-175-190*98	100	98	89	19	175~190	225	100	6	4	3 ⁷ / ₈	3 ¹ / ₂	3 ³ / ₄	6 ⁷ / ₈ ~7 ¹ / ₂	8 ⁷ / ₈	3 ¹⁵ / ₁₆	13	8		
LOF4-175-190*127	100	127	112	19	175~190	225	110	10	4	5	4 ⁷ / ₁₆	3 ³ / ₄	6 ⁷ / ₈ ~7 ¹ / ₂	8 ⁷ / ₈	4 ⁵ / ₁₆	22	8		
LOF6-240*127	150	127	112	23	240	280	140	14	6	5	4 ⁷ / ₁₆	7 ¹ / ₈	9 ⁷ / ₁₆	11	5 ¹ / ₂	31	8		



LKF	Dimensions-mm								kg	Dimensions-inch								b	(n)QTY	Thread Available
	DN	DB	DC	DD	DE	DF	DH	Weight		DN	DB	DC	DD	DE	DF	DH	Weight			
LKF2-120*98	50	98	89	15	120	155	90	5	2	3 ⁷ / ₈	3 ¹ / ₂	3 ¹ / ₁₆	4 ³ / ₄	6 ¹ / ₈	3 ³ / ₁₆	11	4	PT	NPT	
LKF3-150*98	80	98	89	15	150	185	100	8	3	3 ⁷ / ₈	3 ¹ / ₂	3 ¹ / ₁₆	5 ³ / ₄	7 ¹ / ₁₆	3 ¹⁵ / ₁₆	18	8	PT	NPT	
LKF3-150*127	80	127	112	15	150	185	110	8	3	5	4 ⁷ / ₁₆	3 ¹ / ₁₆	5 ³ / ₄	7 ¹ / ₁₆	4 ⁵ / ₁₆	15	8	PT	NPT	
LKF4-175*98	100	98	89	15	175	210	100	10	4	3 ⁷ / ₈	3 ¹ / ₂	3 ¹ / ₁₆	6 ⁷ / ₈	8 ¹ / ₄	3 ¹⁵ / ₁₆	22	8	PT	NPT	
LKF4-175*127	100	127	112	15	175	210	110	10	4	5	4 ⁷ / ₁₆	3 ¹ / ₁₆	6 ⁷ / ₈	8 ¹ / ₄	4 ⁵ / ₁₆	22	8	PT	NPT	
LKF6-240*127	150	127	112	23	240	280	140	20	6	5	4 ⁷ / ₁₆	7 ¹ / ₈	9 ⁷ / ₁₆	11	5 ¹ / ₂	44	8	PT	NPT	



LOC	Dimensions-mm								kg	Dimensions-inch								b	(n)QTY
	DN	DB	DC	DD	DE	DF	DH	Weight		DN	DB	DC	DD	DE	DF	DH	Weight		
LOC3-150*98	80	98	89	15	150	185	150	5	3	3 ⁷ / ₈	3 ¹ / ₂	3 ¹ / ₁₆	5 ³ / ₄	7 ¹ / ₁₆	5 ³ / ₄	11	8		
LOC3-150*127	80	127	112	15	150	185	180	6	3	5	4 ⁷ / ₁₆	3 ¹ / ₁₆	5 ³ / ₄	7 ¹ / ₁₆	7 ¹ / ₁₆	13	8		
LOC4-175*145	100	145	130	15	175	220	200	9	4	5 ¹ / ₁₆	5 ¹ / ₈	3 ¹ / ₁₆	6 ⁷ / ₈	8 ¹ / ₄	7 ⁷ / ₈	20	8		
LOC6-240*145	150	145	130	23	240	280	240	13	6	5 ¹ / ₁₆	5 ¹ / ₈	7 ¹ / ₈	9 ⁷ / ₁₆	11	9 ¹ / ₁₆	29	8		



NO.	Part name	Material	QTY
01	Cable		1
03	Upper Cover	FC200	1
06	Bracket	FC200	1
07	Stator		1
09	Shaft End	SUS403	1
10	Auto-cut Protector		1
11	Bearing Fixer	SPCC	1
12	Centrifugal Switch		1
14R	Capacitor		1
14S	Start Capacitor		1
16	Motor Frame	SUS304	1
17	Lubricant		
18	Outer Cover	SUS304	1
19	Bearing Bracket	FC200	1

NO.	Part name	Material	QTY
20A	Bearing		1
20B	Bearing		1
21	M. Seal	CA/CE & SiC/SiC	1
24	Oil Seal Bush	SUS403	1
25	Oil Seal	SUS304+NBR	1
26	Casing	FC200	1
27	Impeller	HiCrFC	1
28	Casing Cover	FCD700	1
30	Footing	FC200	1
31	Strainer	SUS304	1
41	Handle	SUS304+NBR	1
46	Impeller Key	SUS304	1
47	Gasket Kit		