

# **HCP PUMP**

<b>Model</b>	<b>A-05B</b>
<b>Series</b>	<b>A/AN</b>
<b>Frequency</b>	<b>50</b>
<b>Phase</b>	<b>1</b>
<b>Discharge</b>	<b>50 mm</b>



## **Motor Data**

Input Power—P1	0.6 kW
Rated Power—P2	0.4 kW
Insulation Class	B
Voltage Range	220~240V
Max. Starts Per Hour	10
Rated Speed (rpm)	2780
Start Method	CAPACITOR
Ingress Protection Code	CAPACITOR
Explosion-Proof	IP68

## **Technology**

Impeller Type	Vortex
Mechanical Seal	Double
Lubricating Oil VG32	125 CC
Solid Passage	7.5 mm
Cooling Type	External cooling

## **Material**

Motor Frame	SUS304
Shaft	SUS410
Casing	FC200
Impeller	PA
Mechanical Seal	CA/CE&SiC/SiC
Cable	VCT,H07RN-F
Upper and Lower Bearing	6201ZZ,6202ZZ

## **Liquid**

Maximum Ambient Temperature	0~40°C
Maximum Installation Depth	10 m
Highest Liquid Temperature	40 °C
Liquid Transported	Sewage

## **Others**

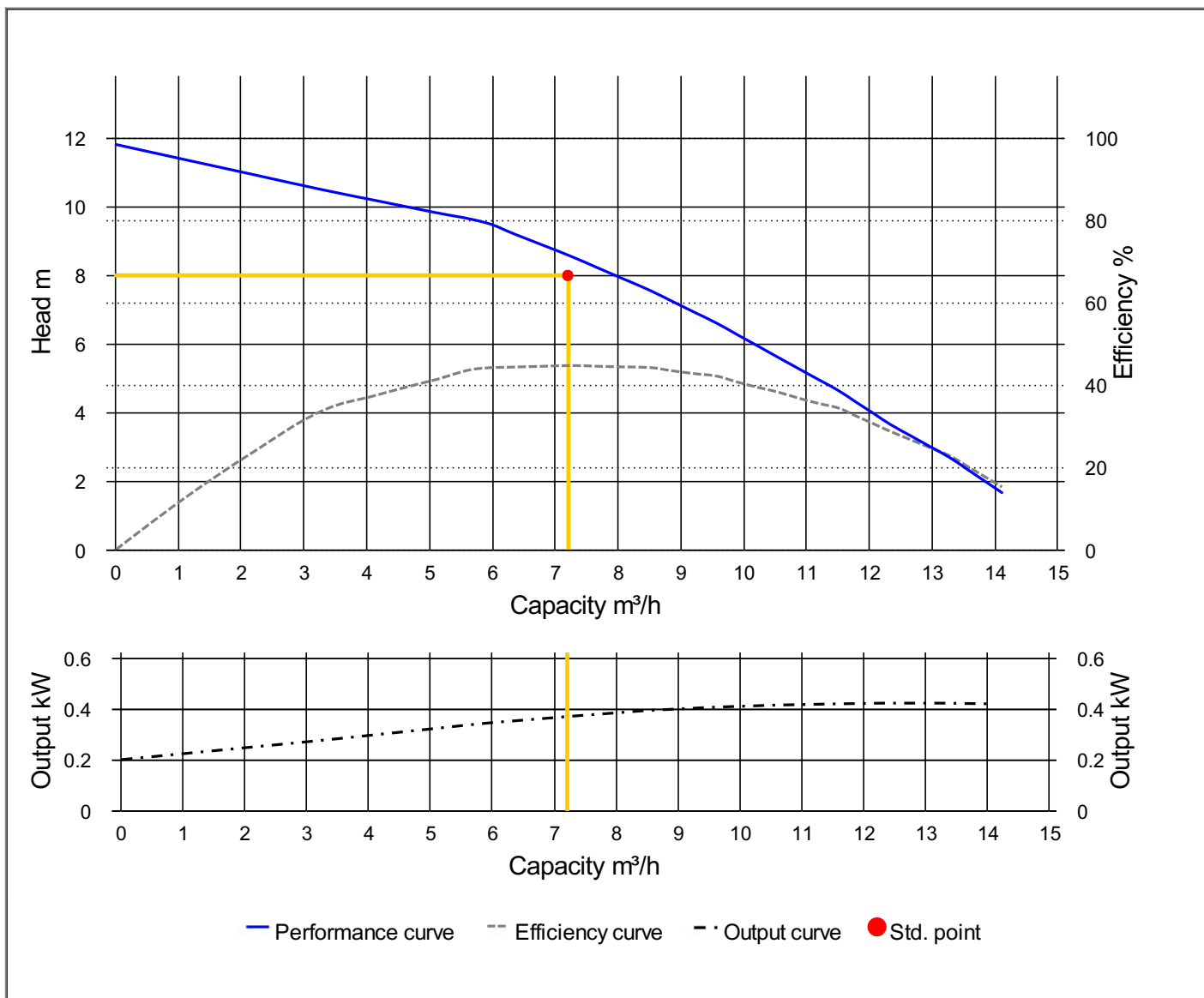
Protection Device	Motor Thermal Protector
Moisture Sensor	



# HCP PUMP

## PUMP PERFORMANCE CURVES

Model	A-05B	File NO.	20210125220317
Frequency	50 Hz	Ver NO.	202003060911
Discharge	2" / 50 mm	<b>REFERENCE SPECIFICATION</b>	
Output	0.5 HP / 0.4 kW		
Std. Head	8 m	Efficiency	44.7 %
Std. Capacity	7.2 m <sup>3</sup> /h		
Phase / Volt	1 Ø / 220 V		
Rated Current	2.90 A		
Pole / rpm	2 P / 2780 rpm		
Start Method	CAPACITOR		
Insulation Class	B		

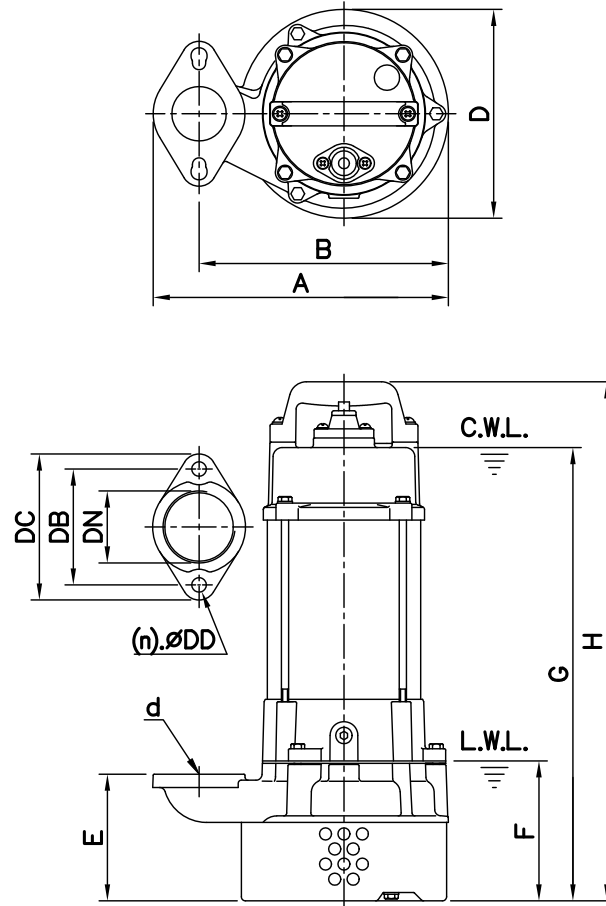


## DIMENSIONS

NO: S3A00208032-02

MODEL: A-05A / 05B / 05L / 21 / 31

1Ø / 3Ø



Flange	
Female Thread	
PF	NPT

Dimensions—mm

Weight:kg

Model	d	A	B	D	E	F	G	H	WT1	Elbow (Flange)Set	DN	DB	DC	DD	(n)QTY	WT2
A-05A 1Ø	50	225	190	161	86	88	294	349	12	EF2-84	50	84	106	10	2	1
A-05B 1Ø	50	225	190	161	86	88	316	371	13	EF2-84	50	84	106	10	2	1
A-05B 3Ø	50	225	190	161	86	88	316	371	12	EF2-84	50	84	106	10	2	1
A-05L 1Ø	50	245	207	173	105	116	376	430	16	EF2-96	50	96	121	12	2	1
A-05L 3Ø	50	245	207	173	105	116	376	430	14	EF2-96	50	96	121	12	2	1
A-21 1Ø	50	245	207	173	105	116	376	430	17	EF2-96	50	96	121	12	2	1
A-21 3Ø	50	245	207	173	105	116	376	430	15	EF2-96	50	96	121	12	2	1
A-31 1Ø	80	276	222	173	120	131	391	445	18	EF3-130	80	130	155	12	2	1
A-31 3Ø	80	276	222	173	120	131	391	445	17	EF3-130	80	130	155	12	2	1

Dimensions—inch

Weight:lb

Model	d	A	B	D	E	F	G	H	WT1	Elbow (Flange)Set	DN	DB	DC	DD	(n)QTY	WT2
A-05A 1Ø	2	8 <sup>7</sup> / <sub>8</sub>	7 <sup>1</sup> / <sub>2</sub>	6 <sup>3</sup> / <sub>16</sub>	3 <sup>3</sup> / <sub>8</sub>	3 <sup>3</sup> / <sub>16</sub>	11 <sup>3</sup> / <sub>16</sub>	13 <sup>3</sup> / <sub>4</sub>	26	EF2-84	2	3 <sup>5</sup> / <sub>16</sub>	4 <sup>3</sup> / <sub>16</sub>	3 <sup>5</sup> / <sub>16</sub>	2	2
A-05B 1Ø	2	8 <sup>7</sup> / <sub>8</sub>	7 <sup>1</sup> / <sub>2</sub>	6 <sup>3</sup> / <sub>16</sub>	3 <sup>3</sup> / <sub>8</sub>	3 <sup>3</sup> / <sub>16</sub>	12 <sup>7</sup> / <sub>16</sub>	14 <sup>5</sup> / <sub>8</sub>	29	EF2-84	2	3 <sup>5</sup> / <sub>16</sub>	4 <sup>3</sup> / <sub>16</sub>	3 <sup>5</sup> / <sub>16</sub>	2	2
A-05B 3Ø	2	8 <sup>7</sup> / <sub>8</sub>	7 <sup>1</sup> / <sub>2</sub>	6 <sup>3</sup> / <sub>16</sub>	3 <sup>3</sup> / <sub>8</sub>	3 <sup>3</sup> / <sub>16</sub>	12 <sup>7</sup> / <sub>16</sub>	14 <sup>5</sup> / <sub>8</sub>	26	EF2-84	2	3 <sup>5</sup> / <sub>16</sub>	4 <sup>3</sup> / <sub>16</sub>	3 <sup>5</sup> / <sub>16</sub>	2	2
A-05L 1Ø	2	9 <sup>5</sup> / <sub>8</sub>	8 <sup>1</sup> / <sub>8</sub>	6 <sup>13</sup> / <sub>16</sub>	4 <sup>1</sup> / <sub>8</sub>	4 <sup>9</sup> / <sub>16</sub>	14 <sup>13</sup> / <sub>16</sub>	16 <sup>15</sup> / <sub>16</sub>	35	EF2-96	2	3 <sup>3</sup> / <sub>4</sub>	4 <sup>3</sup> / <sub>4</sub>	1 <sup>1</sup> / <sub>2</sub>	2	2
A-05L 3Ø	2	9 <sup>5</sup> / <sub>8</sub>	8 <sup>1</sup> / <sub>8</sub>	6 <sup>13</sup> / <sub>16</sub>	4 <sup>1</sup> / <sub>8</sub>	4 <sup>9</sup> / <sub>16</sub>	14 <sup>13</sup> / <sub>16</sub>	16 <sup>15</sup> / <sub>16</sub>	31	EF2-96	2	3 <sup>3</sup> / <sub>4</sub>	4 <sup>3</sup> / <sub>4</sub>	1 <sup>1</sup> / <sub>2</sub>	2	2
A-21 1Ø	2	9 <sup>5</sup> / <sub>8</sub>	8 <sup>1</sup> / <sub>8</sub>	6 <sup>13</sup> / <sub>16</sub>	4 <sup>1</sup> / <sub>8</sub>	4 <sup>9</sup> / <sub>16</sub>	14 <sup>13</sup> / <sub>16</sub>	16 <sup>15</sup> / <sub>16</sub>	37	EF2-96	2	3 <sup>3</sup> / <sub>4</sub>	4 <sup>3</sup> / <sub>4</sub>	1 <sup>1</sup> / <sub>2</sub>	2	2
A-21 3Ø	2	9 <sup>5</sup> / <sub>8</sub>	8 <sup>1</sup> / <sub>8</sub>	6 <sup>13</sup> / <sub>16</sub>	4 <sup>1</sup> / <sub>8</sub>	4 <sup>9</sup> / <sub>16</sub>	14 <sup>13</sup> / <sub>16</sub>	16 <sup>15</sup> / <sub>16</sub>	33	EF2-96	2	3 <sup>3</sup> / <sub>4</sub>	4 <sup>3</sup> / <sub>4</sub>	1 <sup>1</sup> / <sub>2</sub>	2	2
A-31 1Ø	3	10 <sup>7</sup> / <sub>8</sub>	8 <sup>3</sup> / <sub>4</sub>	6 <sup>3</sup> / <sub>16</sub>	4 <sup>3</sup> / <sub>4</sub>	5 <sup>3</sup> / <sub>16</sub>	15 <sup>3</sup> / <sub>8</sub>	17 <sup>1</sup> / <sub>2</sub>	40	EF3-130	3	5 <sup>1</sup> / <sub>8</sub>	6 <sup>3</sup> / <sub>8</sub>	1 <sup>1</sup> / <sub>2</sub>	2	2
A-31 3Ø	3	10 <sup>7</sup> / <sub>8</sub>	8 <sup>3</sup> / <sub>4</sub>	6 <sup>3</sup> / <sub>16</sub>	4 <sup>3</sup> / <sub>4</sub>	5 <sup>3</sup> / <sub>16</sub>	15 <sup>3</sup> / <sub>8</sub>	17 <sup>1</sup> / <sub>2</sub>	37	EF3-130	3	5 <sup>1</sup> / <sub>8</sub>	6 <sup>3</sup> / <sub>8</sub>	1 <sup>1</sup> / <sub>2</sub>	2	2

C.W.L.:Continuous Running Water Level  
L.W.L.:Lowest Running Water Level

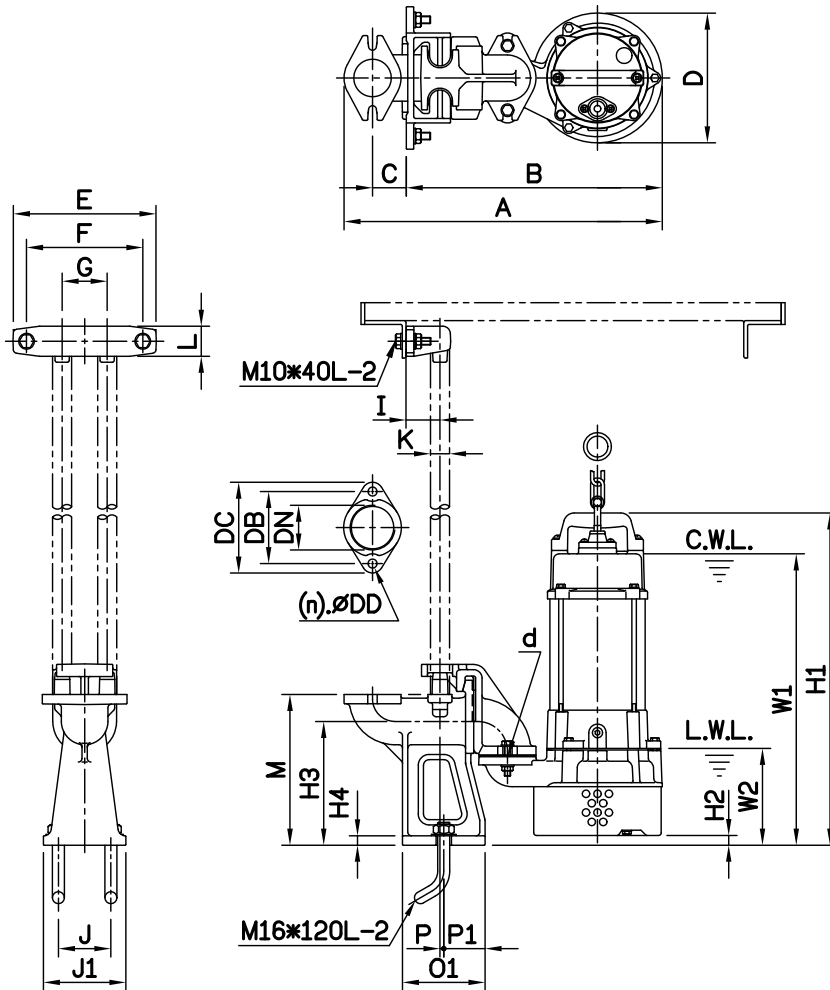
WT1:Pump Weight(Without Cable)  
WT2:Elbow Set Weight

## DIMENSIONS

NO: T2A00208032-01

MODEL: A-05A / 05B / 05L / 21

1Ø / 3Ø



Flange	
Female Thread	
PF	NPT

Dimensions-mm

Elbow (Flange)Set	DN	DB	DC	DD	(n)QTY
EF2-96	50	96	121	12	2

Dimensions-inch

Elbow (Flange)Set	DN	DB	DC	DD	(n)QTY
EF2-96	2	3 3/4	4 3/4	1/2	2

Dimensions-mm

Model	d	A	B	C	D	E	F	G	I	J	J1	K	L	M	O1	P	P1	W1	W2	H1	H2	H3	H4	WT1	Weight:kg		
																									GRS Set	WT2	
A-05A	1Ø	50	408	325	45	161	190	155	60	45	70	110	3/4"	40	201	110	5	55	327	120	381	33	165	13	12	T2-50	9
A-05B	1Ø	50	408	325	45	161	190	155	60	45	70	110	3/4"	40	201	110	5	55	349	120	403	33	165	13	13	T2-50	9
A-05B	3Ø	50	408	325	45	161	190	155	60	45	70	110	3/4"	40	201	110	5	55	349	120	403	33	165	13	12	T2-50	9
A-05L	1Ø	50	425	342	45	173	190	155	60	45	70	110	3/4"	40	201	110	5	55	389	129	443	13	165	13	16	T2-50	9
A-05L	3Ø	50	425	342	45	173	190	155	60	45	70	110	3/4"	40	201	110	5	55	389	129	443	13	165	13	14	T2-50	9
A-21	1Ø	50	425	342	45	173	190	155	60	45	70	110	3/4"	40	201	110	5	55	389	129	443	13	165	13	17	T2-50	9
A-21	3Ø	50	425	342	45	173	190	155	60	45	70	110	3/4"	40	201	110	5	55	389	129	443	13	165	13	15	T2-50	9

Dimensions-inch

Model	d	A	B	C	D	E	F	G	I	J	J1	K	L	M	O1	P	P1	W1	W2	H1	H2	H3	H4	WT1	Weight:lb		
																									GRS Set	WT2	
A-05A	1Ø	2	16 1/16	12 3/16	1 3/4	6 5/16	7 1/2	6 3/8	2 3/8	1 3/4	2 3/4	4 5/16	3/4	1 9/16	7 7/16	4 5/16	3/16	2 3/16	12 7/8	4 3/4	15	1 1/16	6 1/2	1/2	26	T2-50	20
A-05B	1Ø	2	16 1/16	12 3/16	1 3/4	6 5/16	7 1/2	6 3/8	2 3/8	1 3/4	2 3/4	4 5/16	3/4	1 9/16	7 7/16	4 5/16	3/16	2 3/16	13 3/4	4 3/4	15 7/8	1 1/16	6 1/2	1/2	29	T2-50	20
A-05B	3Ø	2	16 1/16	12 3/16	1 3/4	6 5/16	7 1/2	6 3/8	2 3/8	1 3/4	2 3/4	4 5/16	3/4	1 9/16	7 7/16	4 5/16	3/16	2 3/16	13 3/4	4 3/4	15 7/8	1 1/16	6 1/2	1/2	26	T2-50	20
A-05L	1Ø	2	16 3/4	13 3/16	1 3/4	6 3/8	7 1/2	6 3/8	2 3/8	1 3/4	2 3/4	4 5/16	3/4	1 9/16	7 7/16	4 5/16	3/16	2 3/16	15 5/16	5 1/8	17 1/8	1/2	6 1/2	1/2	35	T2-50	20
A-05L	3Ø	2	16 3/4	13 3/16	1 3/4	6 3/8	7 1/2	6 3/8	2 3/8	1 3/4	2 3/4	4 5/16	3/4	1 9/16	7 7/16	4 5/16	3/16	2 3/16	15 5/16	5 1/8	17 1/8	1/2	6 1/2	1/2	31	T2-50	20
A-21	1Ø	2	16 3/4	13 3/16	1 3/4	6 3/8	7 1/2	6 3/8	2 3/8	1 3/4	2 3/4	4 5/16	3/4	1 9/16	7 7/16	4 5/16	3/16	2 3/16	15 5/16	5 1/8	17 1/8	1/2	6 1/2	1/2	37	T2-50	20
A-21	3Ø	2	16 3/4	13 3/16	1 3/4	6 3/8	7 1/2	6 3/8	2 3/8	1 3/4	2 3/4	4 5/16	3/4	1 9/16	7 7/16	4 5/16	3/16	2 3/16	15 5/16	5 1/8	17 1/8	1/2	6 1/2	1/2	33	T2-50	20

C.W.L.:Continuous Running Water Level  
L.W.L.:Lowest Running Water Level

WT1:Pump Weight(Without Cable)  
WT2:GRS Set Weight

