

HCP PUMP

Model	80AFU21.5
Series	AF
Frequency	50
Phase	1
Discharge	80 mm



Motor Data

Input Power—P1	2.05 kW
Rated Power—P2	1.5 kW
Insulation Class	F
Voltage Range	220~240V
Max. Starts Per Hour	10
Rated Speed (rpm)	2820
Start Method	CAPACITOR
Ingress Protection Code	CAPACITOR
Explosion-Proof	IP68

Technology

Impeller Type	Vortex
Mechanical Seal	Double
Lubricating Oil VG32	850 CC
Solid Passage	50 mm
Cooling Type	External cooling
Cooling Jacket	NO

Material

Motor Frame	FC200
Shaft	SUS403
Casing	FC200
Impeller	FC200
Mechanical Seal	CA/CE&SiC/SiC
Cable	VCT,H07RN-F
Upper and Lower Bearing	6204ZZ,6305ZZ

Liquid

Maximum Ambient Temperature	0~40°C
Maximum Installation Depth	20 m
Highest Liquid Temperature	40 °C
Liquid Transported	Sewage

Others

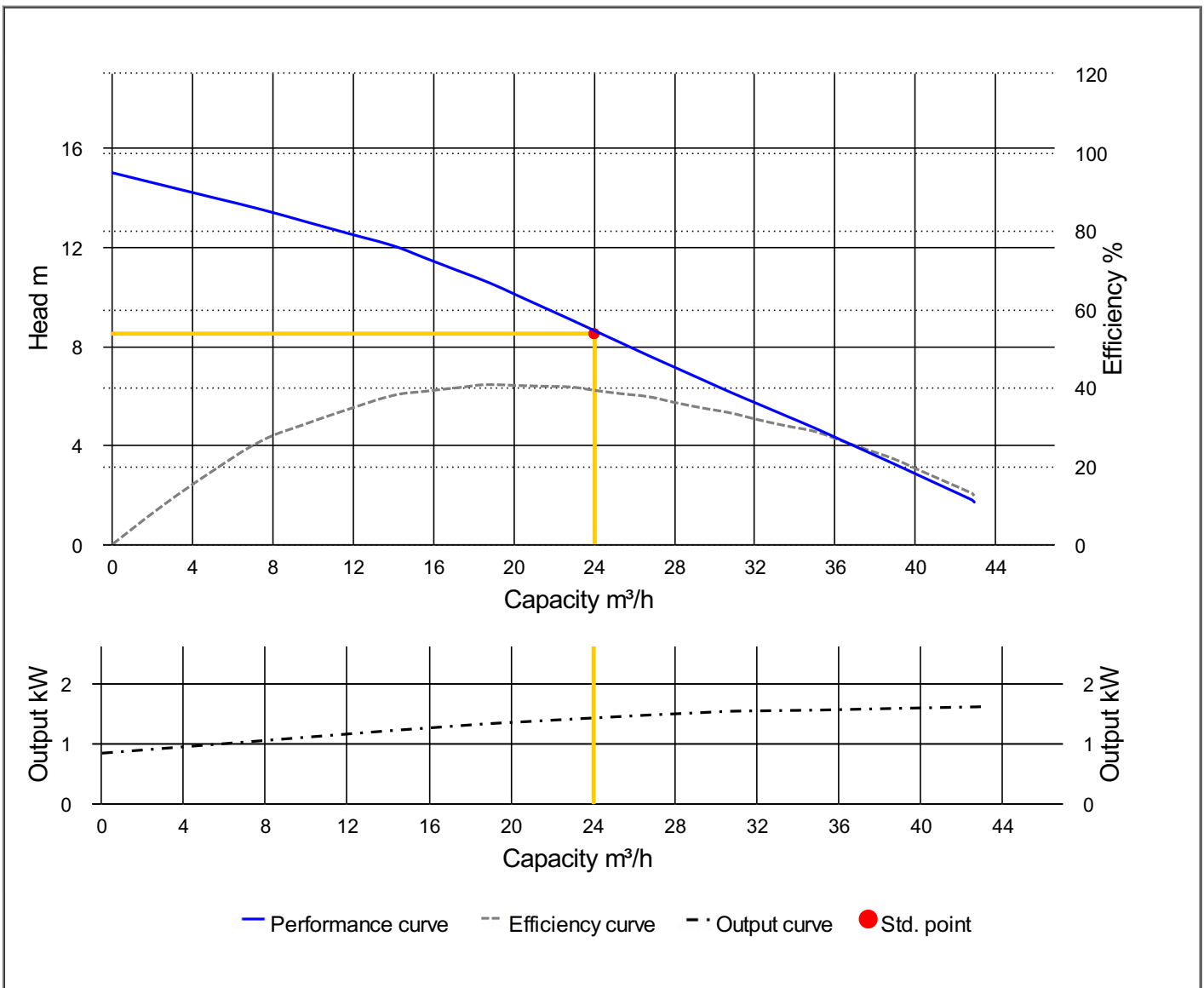
Protection Device	Auto-cut Protector
Moisture Sensor	



HCP PUMP

PUMP PERFORMANCE CURVES

Model	80AFU21.5	File NO.	20210125215015
Frequency	50 Hz	Ver NO.	202003060911
Discharge	3" / 80 mm	REFERENCE SPECIFICATION	
Output	2 HP / 1.5 kW	Output	1.42 kW
Std. Head	8.5 m	Efficiency	39.1 %
Std. Capacity	24 m ³ /h		
Phase / Volt	1 Ø / 220 V		
Rated Current	10.20 A		
Pole / rpm	2 P / 2820 rpm		
Start Method	CAPACITOR		
Insulation Class	F		

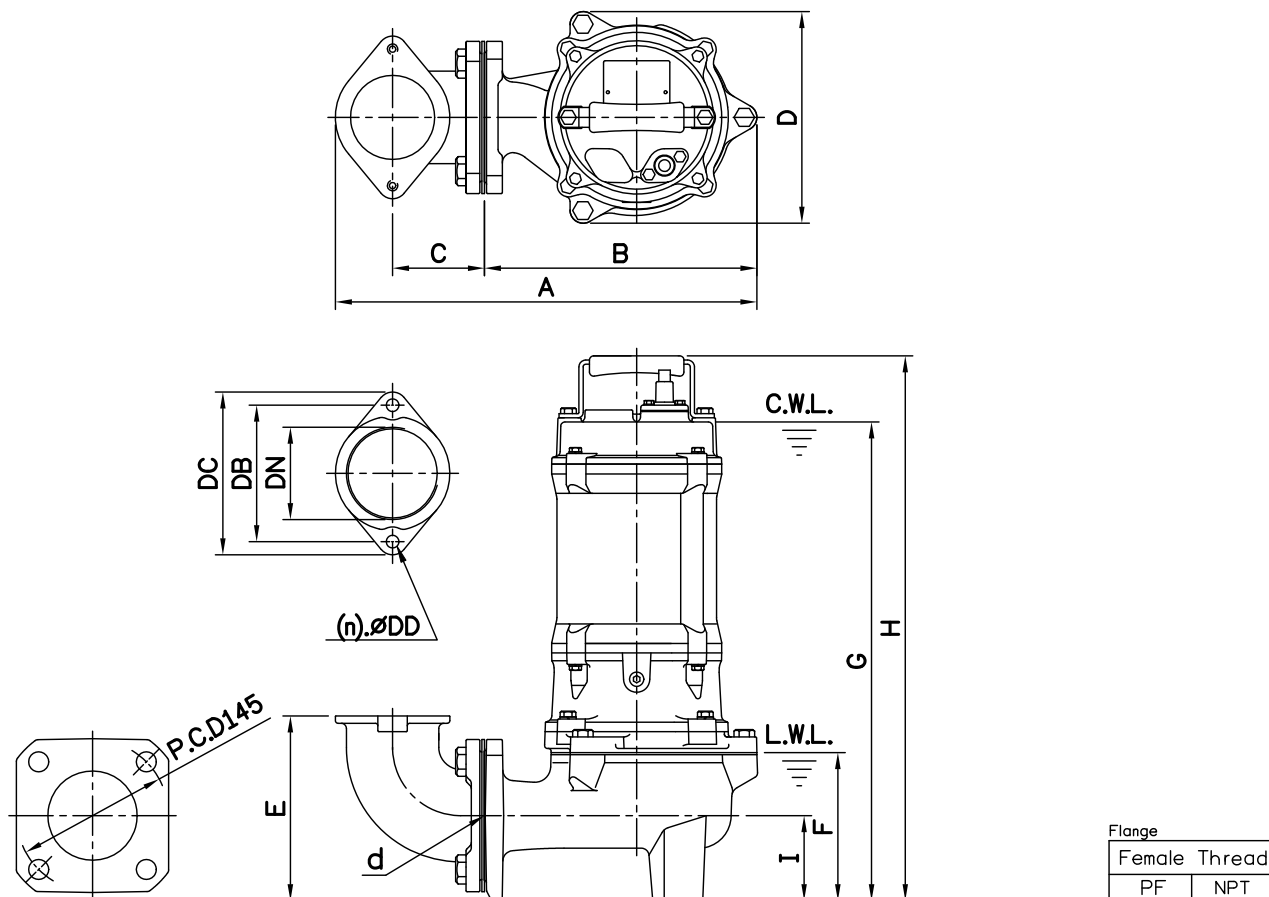


DIMENSIONS

NO: S3AFU222032-00

MODEL: 80AFU21.5 / 22.2 / 21.5L / 22.2L

1Ø / 3Ø



Dimensions—mm

Weight:kg

Model	d	A	B	C	D	E	F	G	H	I	WT1	Elbow (Flange)Set	DN	DB	DC	DD	(n)QTY	WT2
80AFU21.5 1Ø	80	397	260	83	202	171	140	511	574	81	35	EB3-130	80	130	155	12	2	5
80AFU22.2 1Ø	80	397	260	83	202	171	140	538	601	81	38	EB3-130	80	130	155	12	2	5
80AFU21.5L 1Ø	80	402	265	83	221	210	190	563	626	120	38	EB3-130	80	130	155	12	2	5
80AFU22.2L 1Ø	80	402	265	83	221	210	190	590	653	120	40	EB3-130	80	130	155	12	2	5
80AFU21.5 3Ø	80	397	260	83	202	171	140	456	519	81	32	EB3-130	80	130	155	12	2	5
80AFU22.2 3Ø	80	397	260	83	202	171	140	456	519	81	34	EB3-130	80	130	155	12	2	5
80AFU21.5L 3Ø	80	402	265	83	221	210	190	508	571	120	34	EB3-130	80	130	155	12	2	5
80AFU22.2L 3Ø	80	402	265	83	221	210	190	508	571	120	36	EB3-130	80	130	155	12	2	5

Dimensions—inch

Weight:lb

Model	d	A	B	C	D	E	F	G	H	I	WT1	Elbow (Flange)Set	DN	DB	DC	DD	(n)QTY	WT2
80AFU21.5 1Ø	3	15 ⁵ / ₁₆	10 ¹ / ₄	3 ³ / ₄	7 ¹⁵ / ₁₆	6 ³ / ₄	5 ¹ / ₂	20 ⁵ / ₁₆	22 ⁵ / ₁₆	3 ³ / ₁₆	77	EB3-130	3	5 ¹ / ₈	6 ¹ / ₈	1 ¹ / ₂	2	11
80AFU22.2 1Ø	3	15 ⁵ / ₁₆	10 ¹ / ₄	3 ³ / ₄	7 ¹⁵ / ₁₆	6 ³ / ₄	5 ¹ / ₂	21 ³ / ₁₆	23 ¹ / ₁₆	3 ³ / ₁₆	84	EB3-130	3	5 ¹ / ₈	6 ¹ / ₈	1 ¹ / ₂	2	11
80AFU21.5L 1Ø	3	15 ⁵ / ₁₆	10 ¹ / ₁₆	3 ³ / ₄	8 ¹¹ / ₁₆	8 ¹ / ₄	7 ¹ / ₂	22 ³ / ₁₆	24 ⁷ / ₁₆	4 ³ / ₄	84	EB3-130	3	5 ¹ / ₈	6 ¹ / ₈	1 ¹ / ₂	2	11
80AFU22.2L 1Ø	3	15 ⁵ / ₁₆	10 ¹ / ₁₆	3 ³ / ₄	8 ¹¹ / ₁₆	8 ¹ / ₄	7 ¹ / ₂	23 ³ / ₁₆	25 ¹ / ₁₆	4 ³ / ₄	88	EB3-130	3	5 ¹ / ₈	6 ¹ / ₈	1 ¹ / ₂	2	11
80AFU21.5 3Ø	3	15 ⁵ / ₁₆	10 ¹ / ₄	3 ³ / ₄	7 ¹⁵ / ₁₆	6 ³ / ₄	5 ¹ / ₂	17 ⁷ / ₁₆	20 ³ / ₁₆	3 ³ / ₁₆	71	EB3-130	3	5 ¹ / ₈	6 ¹ / ₈	1 ¹ / ₂	2	11
80AFU22.2 3Ø	3	15 ⁵ / ₁₆	10 ¹ / ₄	3 ³ / ₄	7 ¹⁵ / ₁₆	6 ³ / ₄	5 ¹ / ₂	17 ⁷ / ₁₆	20 ³ / ₁₆	3 ³ / ₁₆	75	EB3-130	3	5 ¹ / ₈	6 ¹ / ₈	1 ¹ / ₂	2	11
80AFU21.5L 3Ø	3	15 ⁵ / ₁₆	10 ¹ / ₁₆	3 ³ / ₄	8 ¹¹ / ₁₆	8 ¹ / ₄	7 ¹ / ₂	20	22 ¹ / ₂	4 ³ / ₄	75	EB3-130	3	5 ¹ / ₈	6 ¹ / ₈	1 ¹ / ₂	2	11
80AFU22.2L 3Ø	3	15 ⁵ / ₁₆	10 ¹ / ₁₆	3 ³ / ₄	8 ¹¹ / ₁₆	8 ¹ / ₄	7 ¹ / ₂	20	22 ¹ / ₂	4 ³ / ₄	79	EB3-130	3	5 ¹ / ₈	6 ¹ / ₈	1 ¹ / ₂	2	11

C.W.L.:Continuous Running Water Level
L.W.L.:Lowest Running Water Level

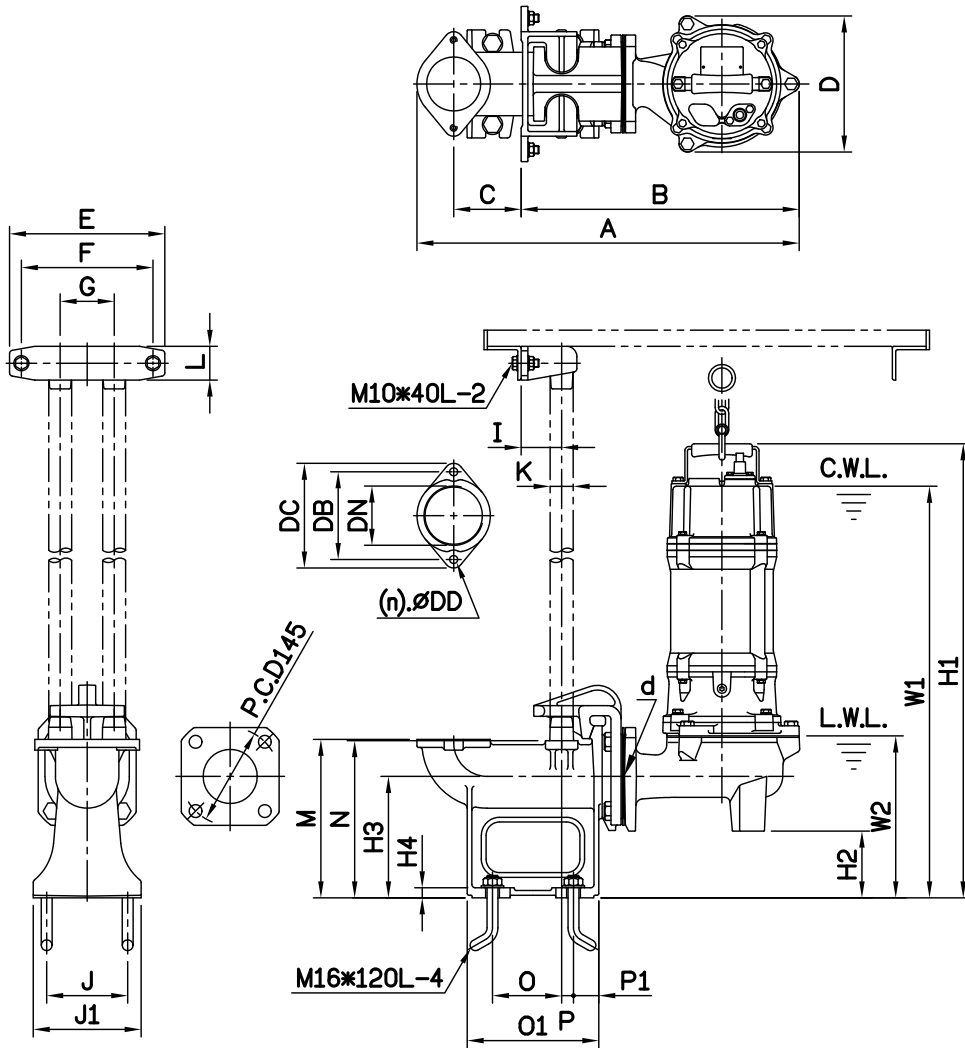
WT1:Pump Weight(Without Cable)
WT2:Elbow Set Weight

DIMENSIONS

NO: T3AFU222032-00

MODEL: 80AFU21.5 / 22.2 / 21.5L / 22.2L

1Ø / 3Ø



Flange	
Female Thread	
PF	NPT

Dimensions—mm

Elbow (Flange) Set	DN	DB	DC	DD	(n)QTY
EF3-130	80	130	155	12	2

Dimensions—inch

Elbow (Flange) Set	DN	DB	DC	DD	(n)QTY
EF3-130	3	5 1/8	6 1/8	1/2	2

Dimensions—mm

Model	d	A	B	C	D	E	F	G	I	J	J1	K	L	M	N	O	O1	P	P1	W1	W2	H1	H2	H3	H4	WT1	GRS Set	WT2
80AFU21.5 1Ø	80	567	412	100	202	230	195	80	60	120	160	1 1/4"	50	235	233	103	195	18	38	610	239	673	99	180	15	35	T2-80	20
80AFU22.2 1Ø	80	567	412	100	202	230	195	80	60	120	160	1 1/4"	50	235	233	103	195	18	38	637	239	700	99	180	15	38	T2-80	20
80AFU21.5L 1Ø	80	572	417	100	221	230	195	80	60	120	160	1 1/4"	50	235	233	103	195	18	38	623	250	686	60	180	15	38	T2-80	20
80AFU22.2L 1Ø	80	572	417	100	221	230	195	80	60	120	160	1 1/4"	50	235	233	103	195	18	38	650	250	713	60	180	15	40	T2-80	20
80AFU21.5 3Ø	80	567	412	100	202	230	195	80	60	120	160	1 1/4"	50	235	233	103	195	18	38	555	239	618	99	180	15	32	T2-80	20
80AFU22.2 3Ø	80	567	412	100	202	230	195	80	60	120	160	1 1/4"	50	235	233	103	195	18	38	555	239	618	99	180	15	34	T2-80	20
80AFU21.5L 3Ø	80	572	417	100	221	230	195	80	60	120	160	1 1/4"	50	235	233	103	195	18	38	568	250	631	60	180	15	34	T2-80	20
80AFU22.2L 3Ø	80	572	417	100	221	230	195	80	60	120	160	1 1/4"	50	235	233	103	195	18	38	568	250	631	60	180	15	36	T2-80	20

Weight:kg

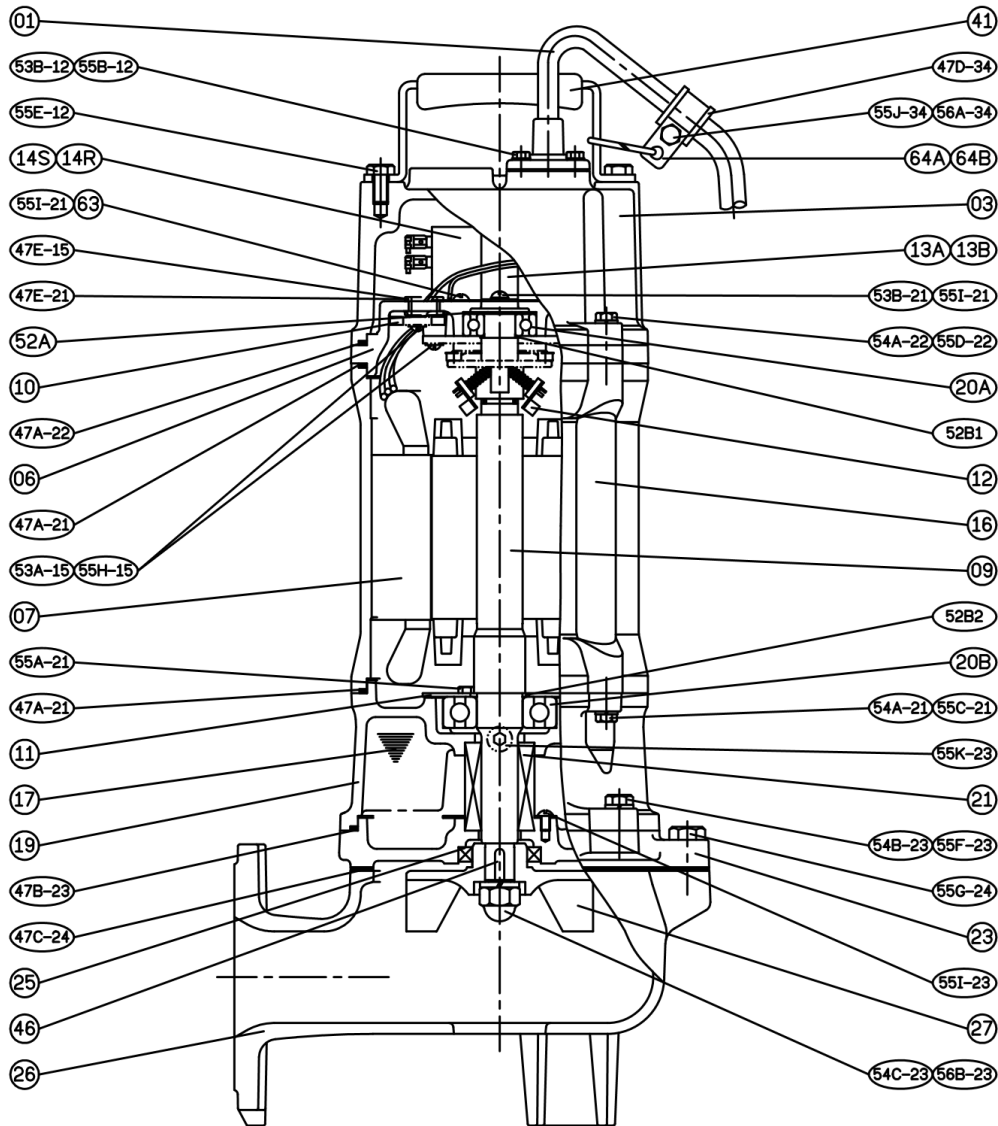
Dimensions—inch

Model	d	A	B	C	D	E	F	G	I	J	J1	K	L	M	N	O	O1	P	P1	W1	W2	H1	H2	H3	H4	WT1	GRS Set	WT2
80AFU21.5 1Ø	3	22 1/8	16 1/4	3 15/16	7 15/16	9 1/16	7 1/16	3 1/8	2 3/8	4 3/4	6 5/16	1 1/4	2	9 1/4	9 3/16	4 1/16	7 11/16	1 1/8	1 1/2	24	9 1/16	26 1/2	3 7/8	7 1/8	9/16	77	T2-80	43
80AFU22.2 1Ø	3	22 1/8	16 1/4	3 15/16	7 15/16	9 1/16	7 1/16	3 3/8	2 3/8	4 3/4	6 5/16	1 1/4	2	9 1/4	9 3/16	4 1/16	7 11/16	1 1/8	1 1/2	25 1/16	9 1/16	27 3/8	3 7/8	7 1/8	9/16	84	T2-80	43
80AFU21.5L 1Ø	3	22 1/2	16 3/8	3 15/16	8 7/16	9 1/16	7 1/16	3 3/8	2 3/8	4 3/4	6 5/16	1 1/4	2	29 1/4	9 3/16	4 1/16	7 11/16	1 1/8	1 1/2	24 1/2	9 13/16	27	2 3/8	7 1/8	9/16	84	T2-80	43
80AFU22.2L 1Ø	3	22 1/2	16 3/8	3 15/16	8 7/16	9 1/16	7 1/16	3 3/8	2 3/8	4 3/4	6 5/16	1 1/4	2	9 1/4	9 3/16	4 1/16	7 11/16	1 1/8	1 1/2	25 1/16	9 13/16	28 1/8	2 3/8	7 1/8	9/16	88	T2-80	43
80AFU21.5 3Ø	3	22 1/8	16 1/4	3 15/16	7 15/16	9 1/16	7 1/16	3 3/8	2 3/8	4 3/4	6 5/16	1 1/4	2	9 1/4	9 3/16	4 1/16	7 11/16	1 1/8	1 1/2	21 1/8	9 1/16	24 1/8	3 7/8	7 1/8	9/16	71	T2-80	43
80AFU22.2 3Ø	3	22 1/8	16 1/4	3 15/16	7 15/16	9 1/16	7 1/16	3 3/8	2 3/8	4 3/4	6 5/16	1 1/4	2	9 1/4	9 3/16	4 1/16	7 11/16	1 1/8	1 1/2	21 1/8	9 1/16	24 1/8	3 7/8	7 1/8	9/16	75	T2-80	43
80AFU21.5L 3Ø	3	22 1/2	16 3/8	3 15/16	8 7/16	9 1/16	7 1/16	3 3/8	2 3/8	4 3/4	6 5/16	1 1/4	2	9 1/4	9 3/16	4 1/16	7 11/16	1 1/8	1 1/2	22 3/8	9 13/16	24 3/8	2 3/8	7 1/8	9/16	75	T2-80	43
80AFU22.2L 3Ø	3	22 1/2	16 3/8	3 15/16	8 7/16	9 1/16	7 1/16	3 3/8	2 3/8	4 3/4	6 5/16	1 1/4	2	9 1/4	9 3/16	4 1/16	7 11/16	1 1/8	1 1/2	22 3/8	9 13/16	24 3/8	2 3/8	7 1/8	9/16	79	T2-80	43

Weight:lb

C.W.L.:Continuous Running Water Level
L.W.L.:Lowest Running Water Level

WT1:Pump Weight(Without Cable)
WT2:GRS Set Weight



NO.	Part name	Material	QTY
01	Cable		1
03	Upper Cover	FC200	1
06	Bracket	FC200	1
07	Stator		1
09	Shaft End	SUS403	1
10	Auto-cut Protector		1
11	Bearing Fixer	SPCC	1
12	Centrifugal Switch		1
14R	Capacitor		1
14S	Start Capacitor		1
16	Motor Frame	FC200	1
17	Lubricant		
19	Bearing Bracket	FC200	1
20A	Bearing		1

NO.	Part name	Material	QTY
20B	Bearing		1
21	M. Seal	CA/CE & SiC/SiC	1
23	M. Seal Bracket	FC200	1
25	Oil Seal	NBR	1
26	Casing	FC200	1
27	Impeller	FC200	1
41	Handle	SUS304	1
46	Impeller Key	SUS304	1
47	Gasket Kit		