

HCP PUMP

Model	80(100)AL211
Series	AL
Frequency	50
Phase	3
Discharge	100 mm



Motor Data

Input Power—P1	12.8 kW
Rated Power—P2	11 kW
Insulation Class	H
Voltage Range	200~525V
Max. Starts Per Hour	5
Rated Speed (rpm)	2900
Start Method	STAR-DELTA / DOL
Ingress Protection Code	STAR-DELTA/DOL
Explosion-Proof	IP68

Technology

Impeller Type	Open
Mechanical Seal	Double
Lubricating Oil VG32	2000 CC
Solid Passage	20 mm
Cooling Type	External cooling

Material

Motor Frame	FC200
Shaft	SUS420J2
Casing	FC200
Impeller	FC200
Mechanical Seal	CA/CE&SiC/SiC
Cable	VCT,H07RN-F
Upper and Lower Bearing	6306ZZ,6309ZZ

Liquid

Maximum Ambient Temperature	0~40°C
Maximum Installation Depth	20 m
Highest Liquid Temperature	40 °C
Liquid Transported	Sewage

Others

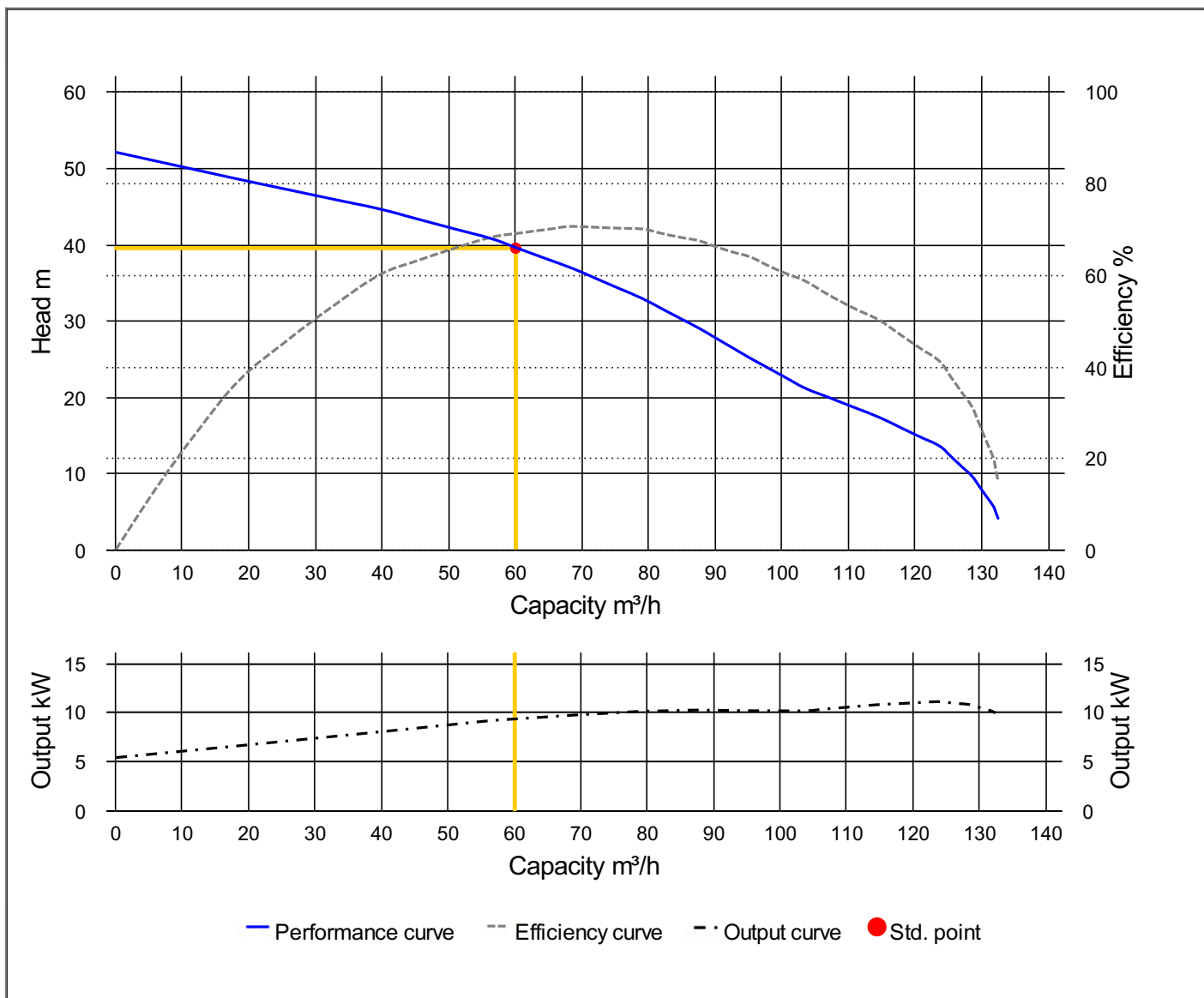
Protection Device	Motor Thermal Sensor
Moisture Sensor	Moisture Sensor



HCP PUMP

PUMP PERFORMANCE CURVES

Model	80(100)AL211	File NO.	20210125215751
Frequency	50 Hz	Ver NO.	202003060911
Discharge	4" / 100 mm	REFERENCE SPECIFICATION	
Output	15 HP / 11 kW	Output	9.3 kW
Std. Head	39.5 m	Efficiency	69.1 %
Std. Capacity	60 m ³ /h		
Phase / Volt	3 Ø / 380 V		
Rated Current	22.20 A		
Pole / rpm	2 P / 2900 rpm		
Start Method	STAR-DELTA / DOL		
Insulation Class	H		

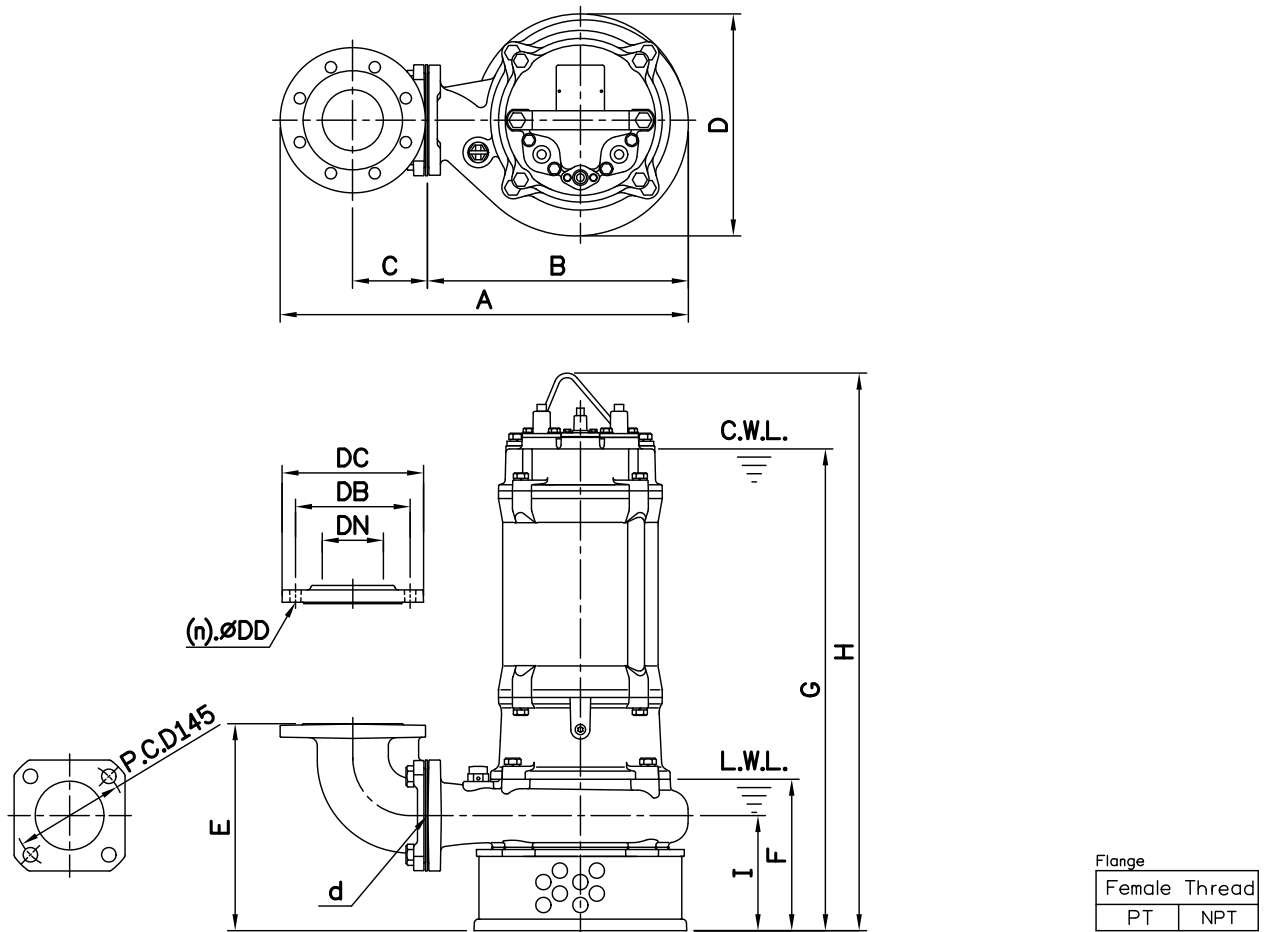


DIMENSIONS

NO: S3AL02A1030-00

MODEL: 80(100)AL211

50Hz 3Ø



Dimensions—mm

Weight:kg

Model	d	A	B	C	D	E	F	G	H	I	WT1	Elbow (Flange)Set	DN	DB	DC	DD	(n)QTY	WT2
80(100)AL211	80	534	342	98	290	271	198	630	729	151	91	EB3-150A	80	150	185	15	8	12
80(100)AL211	80	565	342	113	290	282	198	630	729	151	91	EB4-175(145)	100	175	210	15	8	14

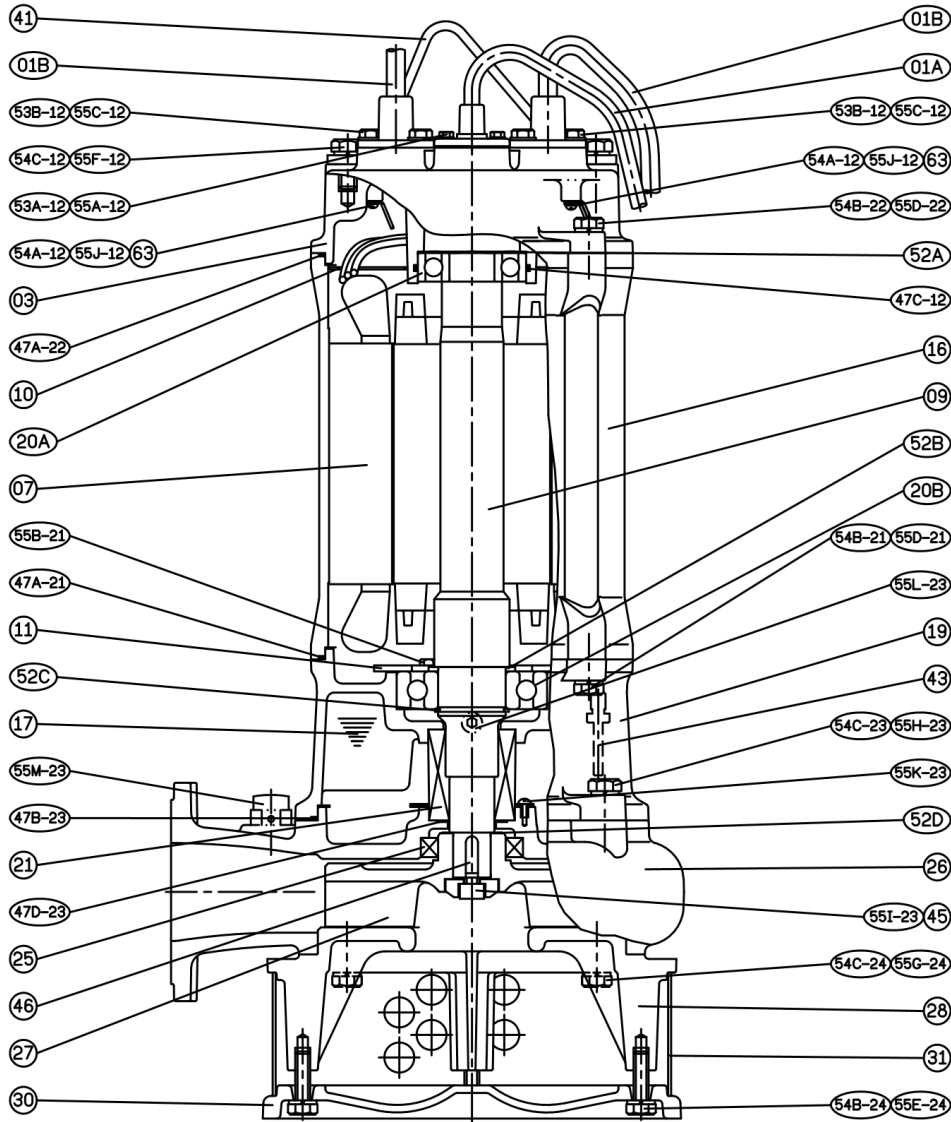
Dimensions—inch

Weight:lb

Model	d	A	B	C	D	E	F	G	H	I	WT1	Elbow (Flange)Set	DN	DB	DC	DD	(n)QTY	WT2
80(100)AL211	3	21	13 ⁷ / ₁₆	3 ⁷ / ₈	11 ⁷ / ₁₆	10 ¹¹ / ₁₆	7 ⁷ / ₁₆	24 ¹³ / ₁₆	28 ¹¹ / ₁₆	5 ⁵ / ₁₆	201	EB3-150A	3	5 ⁷ / ₈	7 ⁵ / ₁₆	³ / ₁₆	8	26
80(100)AL211	3	22 ¹ / ₄	13 ⁷ / ₁₆	4 ⁷ / ₁₆	11 ⁷ / ₁₆	11 ¹ / ₈	7 ⁷ / ₁₆	24 ¹³ / ₁₆	28 ¹¹ / ₁₆	5 ⁵ / ₁₆	201	EB4-175(145)	4	6 ³ / ₈	8 ¹ / ₄	³ / ₁₆	8	30

C.W.L.:Continuous Running Water Level
L.W.L.:Lowest Running Water Level

WT1:Pump Weight(Without Cable)
WT2:Elbow Set Weight



NO.	Part name	Material	QTY
01A	Cable		1
01B	Cable		2
03	Upper Cover	FC200	1
07	Stator (With MTS)		1
09	Shaft End	SUS420J2	1
10	Protective Plate		1
11	Bearing Fixer	SPCC	1
16	Motor Frame	FC200	1
17	Lubricant		
19	Bearing Bracket	FC200	1
20A	Bearing		1
20B	Bearing		1
21	M. Seal	CA/CE & SiC/SiC	1
25	Oil Seal	NBR	1

NO.	Part name	Material	QTY
26	Casing	FC200	1
27	Impeller	FC200	1
28	Casing Cover	FC200	1
30	Footing	FC200	1
31	Strainer	SUS304	1
41	Handle	SUS304	1
43	Moisture Sensor		1
46	Impeller Key	SUS304	1
47	Gasket Kit		