
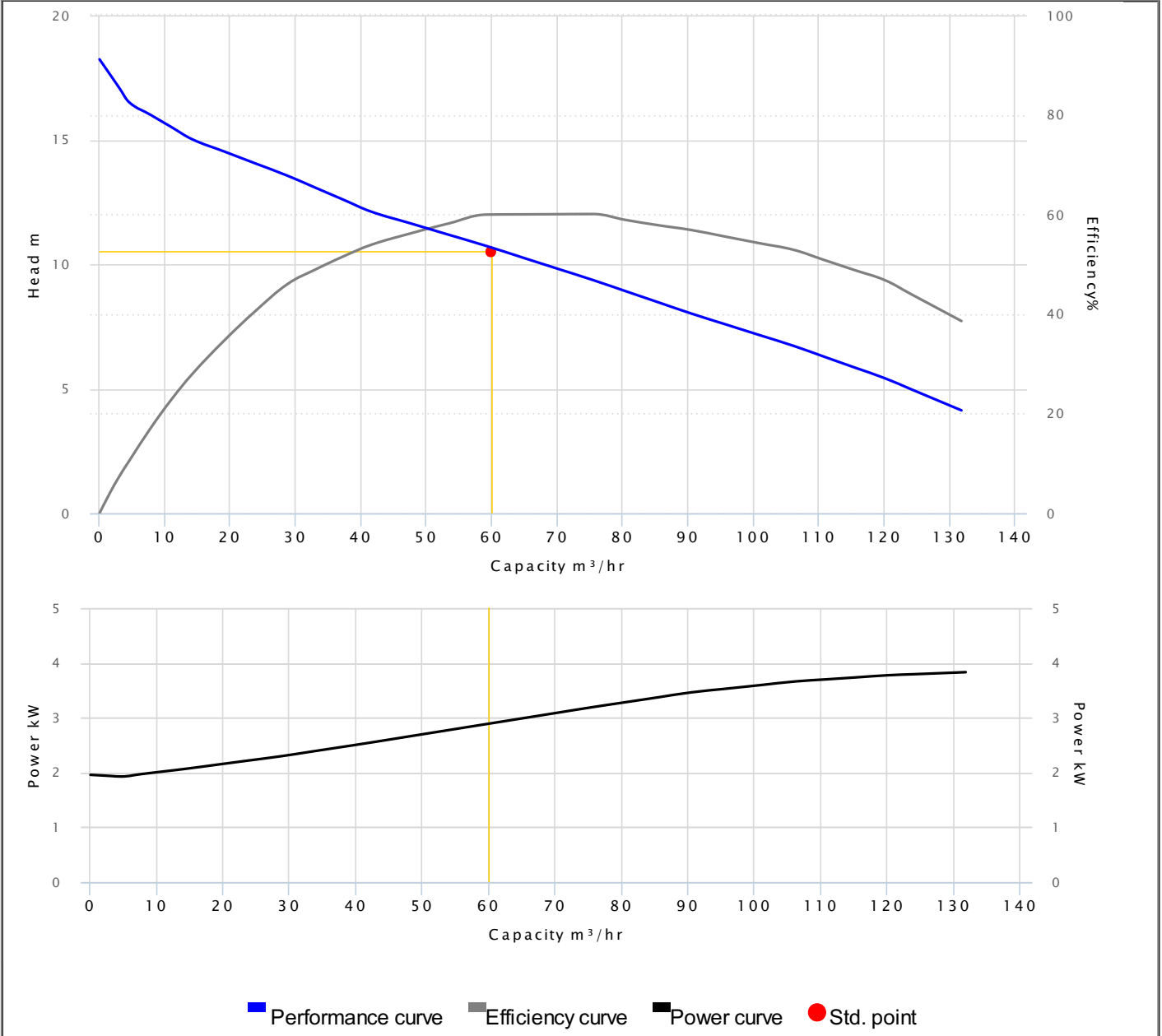


PUMP PERFORMANCE CURVES

Model	80(100)AFE43.7		
Frequency	50 Hz		
Discharge	4" / 100 mm		
Power	5 HP / 3.7 kW		
Std. Head	10.5 m		
Std. Capacity	60 m ³ /hr		
Phase/Volt	3 Ø / 380 V		
Rated Current	8.80 A		
rpm	4 P / 1400 rpm		
Start Method	DIRECT		
Insulation Class	F	Efficiency	60 %
Solid Passage	76 mm	Output	2.9 kW

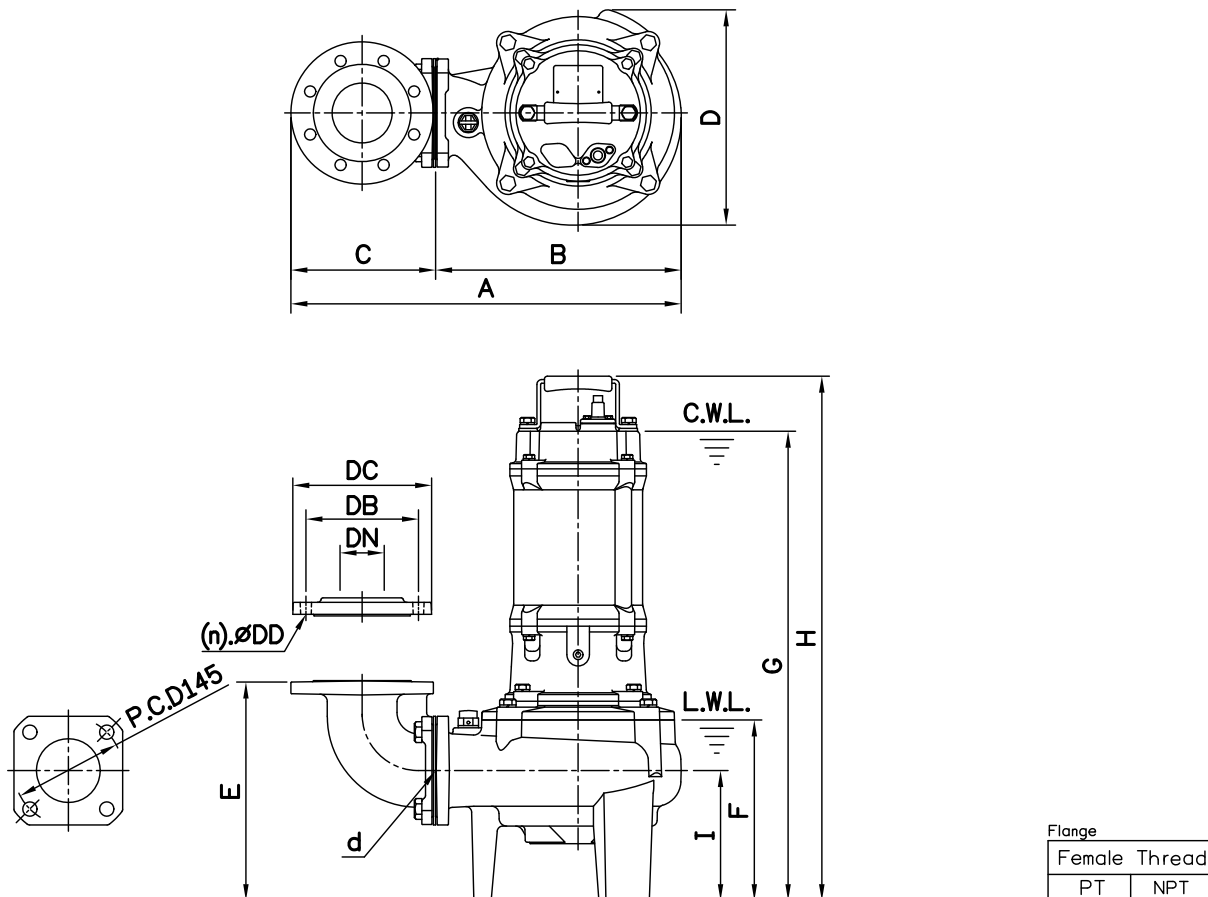


DIMENSIONS

NO: S3AFE437030-00

MODEL: 80(100)AFE41.5 / 42.2 / 43.7

50Hz 3Ø



Dimensions—mm

Weight:kg

Model	d	A	B	C	D	E	F	G	H	I	WT1	Elbow (Flange)Set	DN	DB	DC	DD	(n)QTY	WT2
80(100)AFE41.5 3Ø	80	521	328	98	287	294	241	586	660	174	60	EB3-150A	80	150	185	15	8	12
80(100)AFE41.5 3Ø	80	551	328	113	287	305	241	586	660	174	60	EB4-175(145)	100	175	210	15	8	14
80(100)AFE42.2 3Ø	80	521	328	98	287	294	241	586	660	174	60	EB3-150A	80	150	185	15	8	12
80(100)AFE42.2 3Ø	80	551	328	113	287	305	241	586	660	174	60	EB4-175(145)	100	175	210	15	8	14
80(100)AFE43.7 3Ø	80	539	346	98	304	294	241	626	700	174	71	EB3-150A	80	150	185	15	8	12
80(100)AFE43.7 3Ø	80	569	346	113	304	305	241	626	700	174	71	EB4-175(145)	100	175	210	15	8	14

Dimensions—inch

Weight:lb

Model	d	A	B	C	D	E	F	G	H	I	WT1	Elbow (Flange)Set	DN	DB	DC	DD	(n)QTY	WT2
80(100)AFE41.5 3Ø	3	20 ⁷ / ₂	12 ⁷ / ₁₆	3 ⁷ / ₈	11 ⁵ / ₁₆	11 ⁵ / ₁₆	9 ¹ / ₂	23 ³ / ₁₆	26	6 ⁷ / ₈	132	EB3-150A	3	5 ⁷ / ₈	7 ⁵ / ₁₆	9 ⁵ / ₁₆	8	26
80(100)AFE41.5 3Ø	3	21 ¹ / ₁₆	12 ¹⁵ / ₁₆	4 ⁷ / ₁₆	11 ⁵ / ₁₆	12	9 ¹ / ₂	23 ³ / ₁₆	26	6 ⁷ / ₈	132	EB4-175(145)	4	6 ⁷ / ₈	8 ³ / ₄	9 ⁵ / ₁₆	8	31
80(100)AFE42.2 3Ø	3	20 ⁷ / ₂	12 ¹⁵ / ₁₆	3 ⁷ / ₈	11 ⁵ / ₁₆	11 ⁵ / ₁₆	9 ¹ / ₂	23 ³ / ₁₆	26	6 ⁷ / ₈	132	EB3-150A	3	5 ⁷ / ₈	7 ⁵ / ₁₆	9 ⁵ / ₁₆	8	26
80(100)AFE42.2 3Ø	3	21 ¹ / ₁₆	12 ¹⁵ / ₁₆	4 ⁷ / ₁₆	11 ⁵ / ₁₆	12	9 ¹ / ₂	23 ³ / ₁₆	26	6 ⁷ / ₈	132	EB4-175(145)	4	6 ⁷ / ₈	8 ³ / ₄	9 ⁵ / ₁₆	8	31
80(100)AFE43.7 3Ø	3	21 ¹ / ₄	13 ⁵ / ₈	3 ⁷ / ₈	11 ⁵ / ₁₆	11 ⁵ / ₁₆	9 ¹ / ₂	24 ⁵ / ₈	27 ⁹ / ₁₆	6 ⁷ / ₈	157	EB3-150A	3	5 ⁷ / ₈	7 ⁵ / ₁₆	9 ⁵ / ₁₆	8	26
80(100)AFE43.7 3Ø	3	22 ³ / ₈	13 ⁵ / ₈	4 ⁷ / ₁₆	11 ⁵ / ₁₆	12	9 ¹ / ₂	24 ⁵ / ₈	27 ⁹ / ₁₆	6 ⁷ / ₈	157	EB4-175(145)	4	6 ⁷ / ₈	8 ³ / ₄	9 ⁵ / ₁₆	8	31

C.W.L.:Continuous Running Water Level
L.W.L.:Lowest Running Water Level

WT1:Pump Weight(Without Cable)
WT2:Elbow Set Weight

