

# A SERIES

## SUBMERSIBLE WASTEWATER / SUMP PUMPS

**POWER :** 0.5~1HP (0.4~0.75kW)  
**MAX.HEAD :** 15m(49feet)  
**MAX.FLOW :** 0.6m<sup>3</sup>/min (36m<sup>3</sup>/h)



### PRODUCT NOMENCLATURE

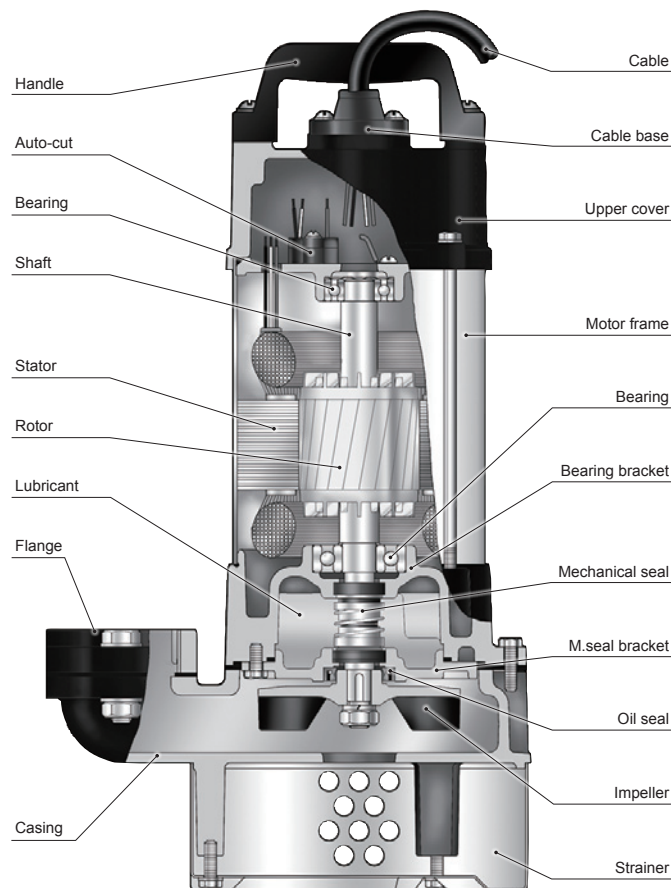
Example :  $\frac{A}{\text{Type}} - \frac{2}{\text{Discharge inch}} \frac{1}{\text{HP}}$

### FEATURE

- A precision manufactured motor is achieved utilizing the highest standard of quality control. To ensure a 100% quality manufactured motor with stable characteristics and a highest efficiency. All rotor adopted heat treatment method for drive shaft assembling and stator winding impregnated with varnish and heat dried in industrial oven.
- HCP's professional assembly line, complimented with a synthesized production test ensures the highest level of final pump quality.
- Standard accessories include : cable with an epoxy resin sealed water resistant cable base, Auto-cut thermal motor protector, dual mechanical seal and lip seal design.

### APPLICATIONS

- Waste water.
- Sump drainage.
- Flood control.
- Dewatering for fish pond or basement and cellars.



# A SERIES SUBMERSIBLE WASTEWATER / SUMP PUMPS

## A-05A · A-05B · A-05L · A-21 · A-31

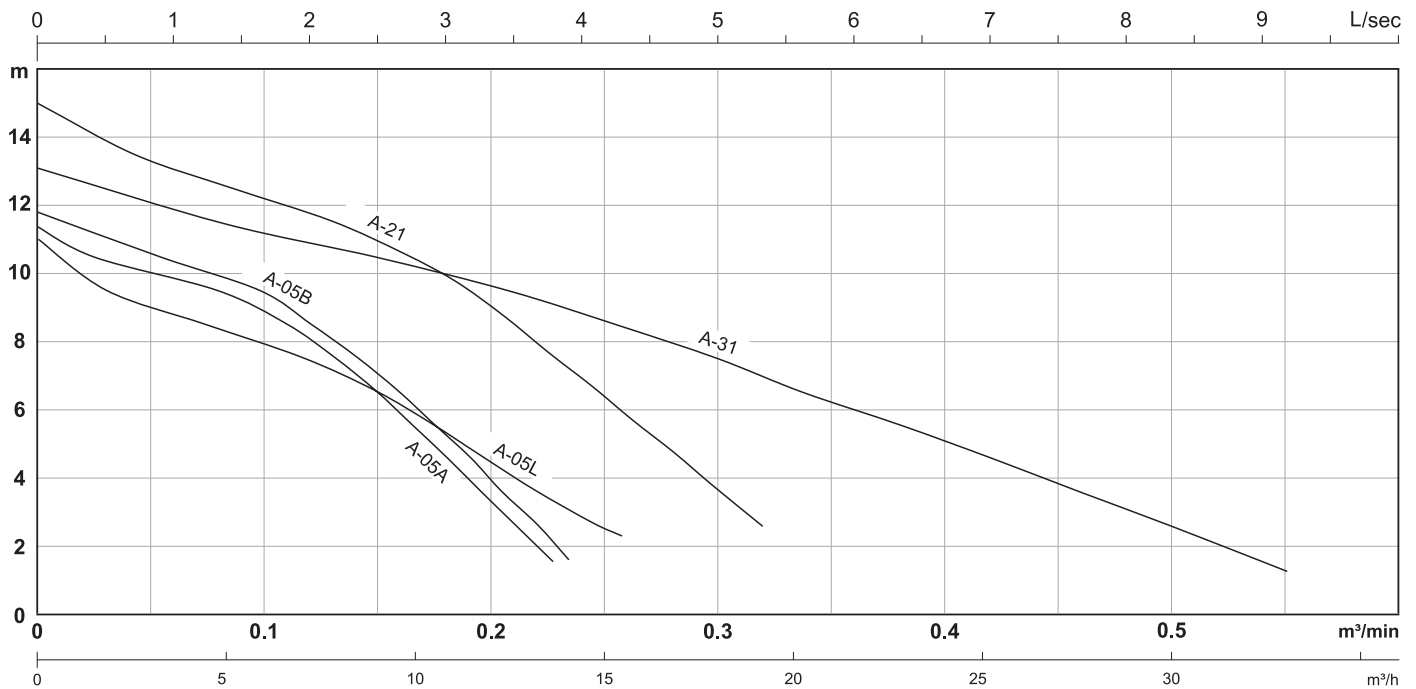
### SPECIFICATIONS

Item		Description
Limits of Use	Liquid Temp.	0~40°C(32~104°F)
	Applications	Clean / Dirty Water From Sumps, Basins and Tanks
Type	Frequency	50Hz
	Motor	2P(3000rpm) · Dry Motor(A-05A:Oil Motor)
	Insulation	Class B
	Protection	IP68
	Protector	Auto-cut (0.5HP 1Ø:Thermal)
	Bearing	Ball type
	M.seal	Double M.seals(A-05A:Single M.seals)
Material	Impeller	Vortex
	Upper Cover	FC200
	Motor Frame	SUS304
	Shaft	SUS410
	M.seal	CA/CE & SiC/SiC(A-05A:CA/CE)
	Casing	FC200
	Impeller	FC200(A-05A/B:PA)
	Cable	VCT or H07RN-F or SJOW/SOW
Optional	-	



Model	Power HP(kW)	Discharge inch(mm)	Standard		MAX		Solid Passage mm(inch)	Weight(W/O Cable)		Phase Voltage	1Ø	1Ø	3Ø	3Ø	3Ø	3Ø	3Ø
			m-m³/min	m-m³/h	m-m³/min	m-m³/h		1Ø-kg(lbs)	3Ø-kg(lbs)								
A-05A	0.5(0.4)	2"(50)	8-0.12	8-7.2	12-0.24	12-14.4	7.5(1/4")	12(26)	-	Full load Ampere	3.1	3.0	-	-	-	-	-
A-05B	0.5(0.4)	2"(50)	8-0.12	8-7.2	11.5-0.24	11.5-14.4	7.5(1/4")	13(29)	12(26)		2.9	2.8	2.0	1.2	1.1	1.1	0.9
A-05L	0.5(0.4)	2"(50)	6.5-0.15	6.5-9	11-0.28	11-16.8	10(3/8")	16(35)	14(31)		3.4	3.3	2.3	1.4	1.3	1.3	1.1
A-21	1(0.75)	2"(50)	10-0.17	10-10.2	15-0.34	15-20.4	10(3/8")	17(37)	15(33)		5.4	5.2	3.3	2.0	1.9	1.8	1.4
A-31	1(0.75)	3"(80)	7-0.3	7-18	13-0.6	13-36	10(3/8")	18(40)	17(37)		5.4	5.2	3.3	2.0	1.9	1.8	1.4

### PERFORMANCE CURVES



Model	Power HP(kW)	Discharge inch(mm)	Q:m³/min					Q:L/sec	H:m							
			0.1	0.2	0.3	0.4	0.5		1	2	3	4	5	6	7	8
A-05A	0.5(0.4)	2"(50)	8.9	3.3	-	-	-	H:m	9.9	8.1	4.6	-	-	-	-	-
A-05B	0.5(0.4)	2"(50)	9.4	3.9	-	-	-		10.3	8.5	5.2	-	-	-	-	-
A-05L	0.5(0.4)	2"(50)	7.9	4.4	-	-	-		8.8	7.5	5.3	2.9	-	-	-	-
A-21	1(0.75)	2"(50)	12.2	9.0	3.6	-	-		13.1	11.8	9.9	6.9	3.6	-	-	-
A-31	1(0.75)	3"(80)	11.2	9.6	7.5	5.1	2.6		11.9	10.9	10.0	8.8	7.5	6.0	4.6	3.1

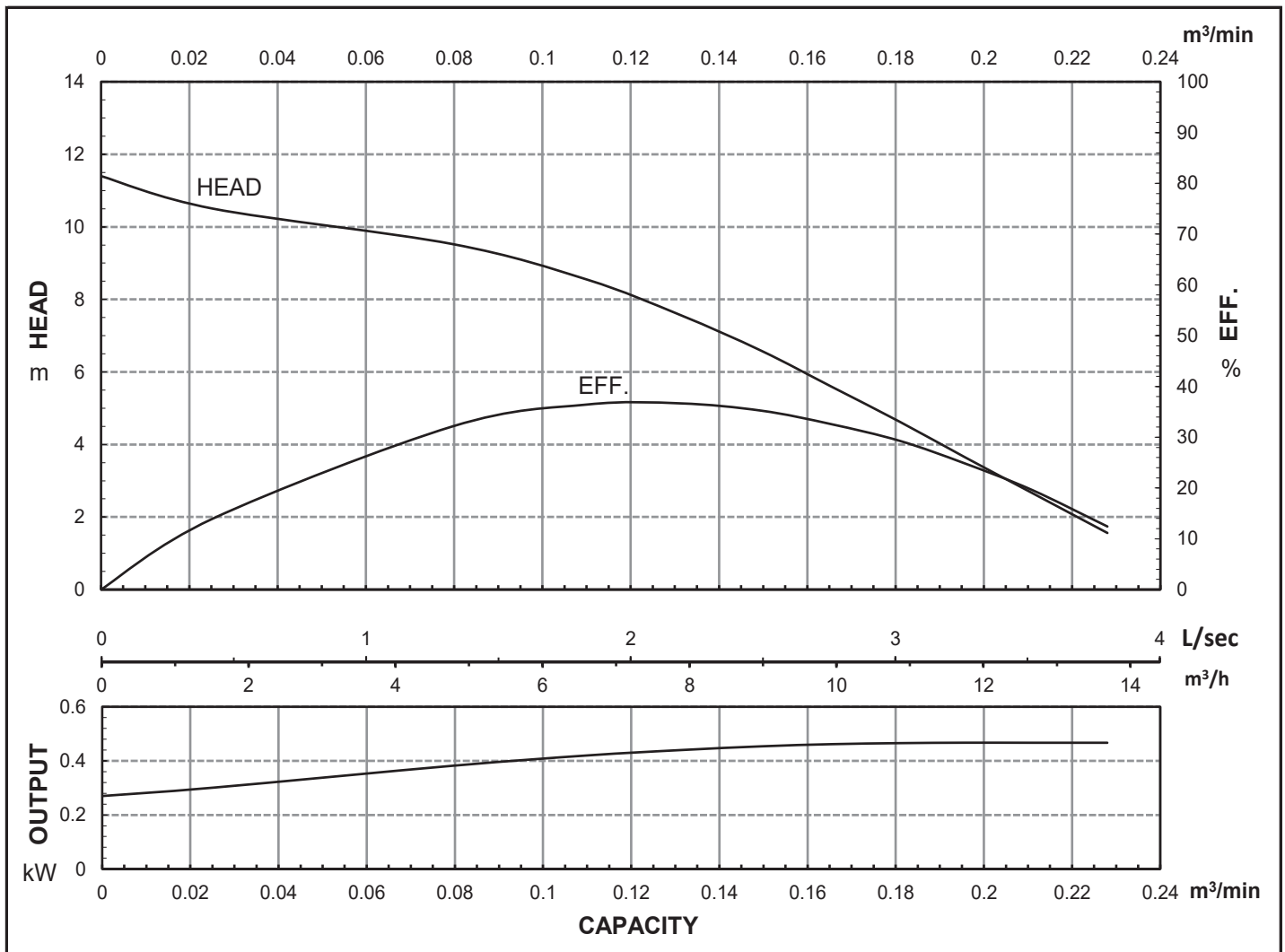


# HCP PUMP

FILE NO. PC-M-E5-A05A1

## PUMP PERFORMANCE CURVES

MODEL	A-05A					VER. NO. AI0710	
	STANDARD SPECIFICATION					REFERENCE SPECIFICATION	
FREQUENCY	50 Hz						
DISCHARGE	2	inch /		50	mm		
OUTPUT	0.5	HP /		0.4	HP	kW	
HEAD	8 m						
CAPACITY	0.12 m <sup>3</sup> /min						
PHASE/VOLTAGE	1 Ø	110 V	220 V	230 V	240 V	Ø V	
RATED CURRENT		6.2 A	3.1 A	3.0 A	2.9 A	A	
POLE / rpm	2	P /		2780	rpm		
START METHOD	CAPACITOR						
INSULATION CLASS	B						
REMARK							



HCP PUMP MANUFACTURER CO., LTD.

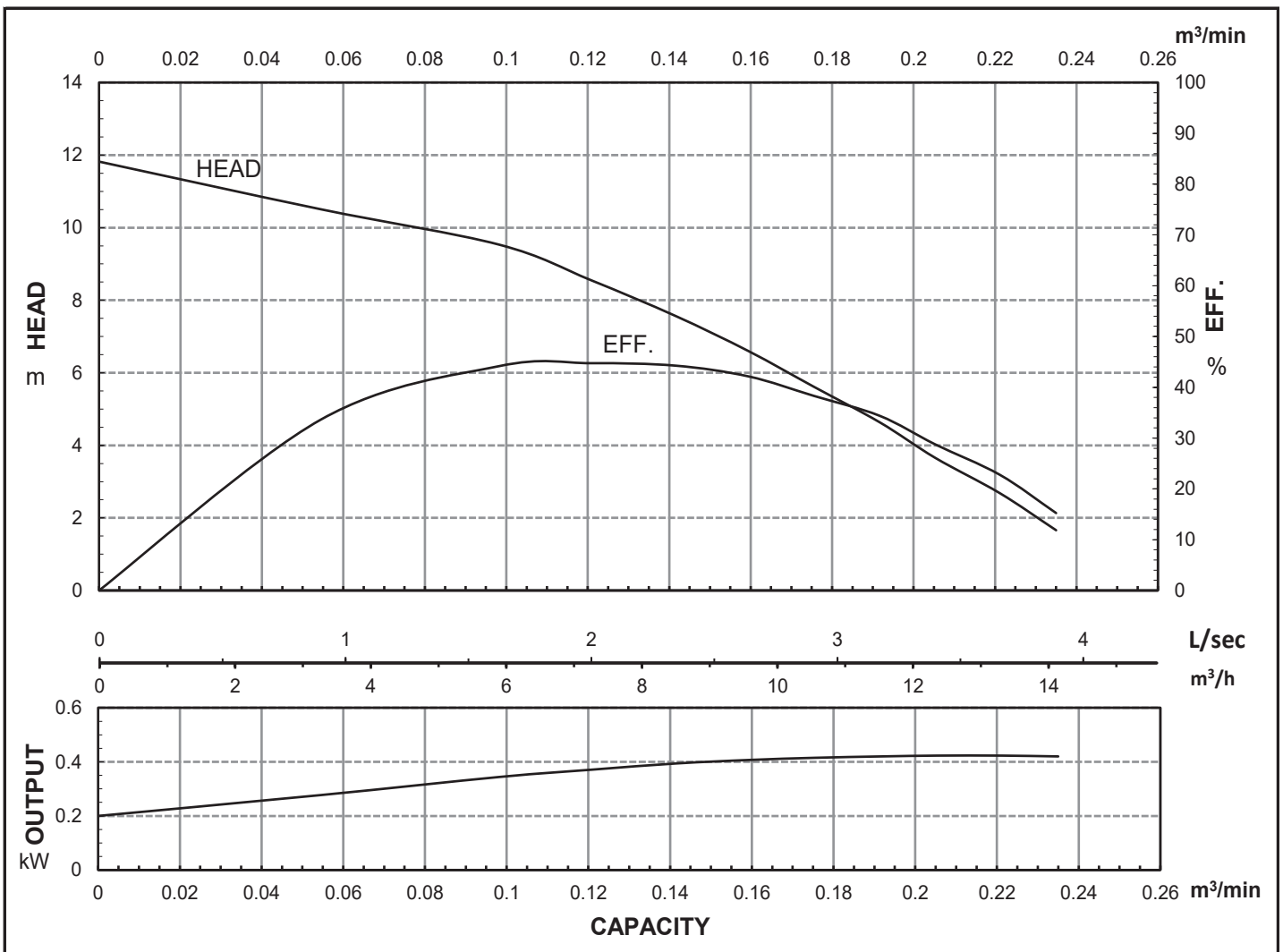


# HCP PUMP

FILE NO. PC-M-E5-A05B1

## PUMP PERFORMANCE CURVES

MODEL	A-05B					VER. NO. AI0710
	STANDARD SPECIFICATION					REFERENCE SPECIFICATION
FREQUENCY	50					Hz
DISCHARGE	2	inch	/	50	mm	
OUTPUT	0.5	HP	/	0.4	kW	HP      kW
HEAD	8					m
CAPACITY	0.12					m <sup>3</sup> /min
PHASE/VOLTAGE	1 ∅	110 V	220 V	230 V	240 V	∅      V
RATED CURRENT		5.8 A	2.9 A	2.8 A	2.7 A	A
POLE / rpm	2	P	/	2780	rpm	
START METHOD	CAPACITOR					
INSULATION CLASS	B					
REMARK						



HCP PUMP MANUFACTURER CO., LTD.

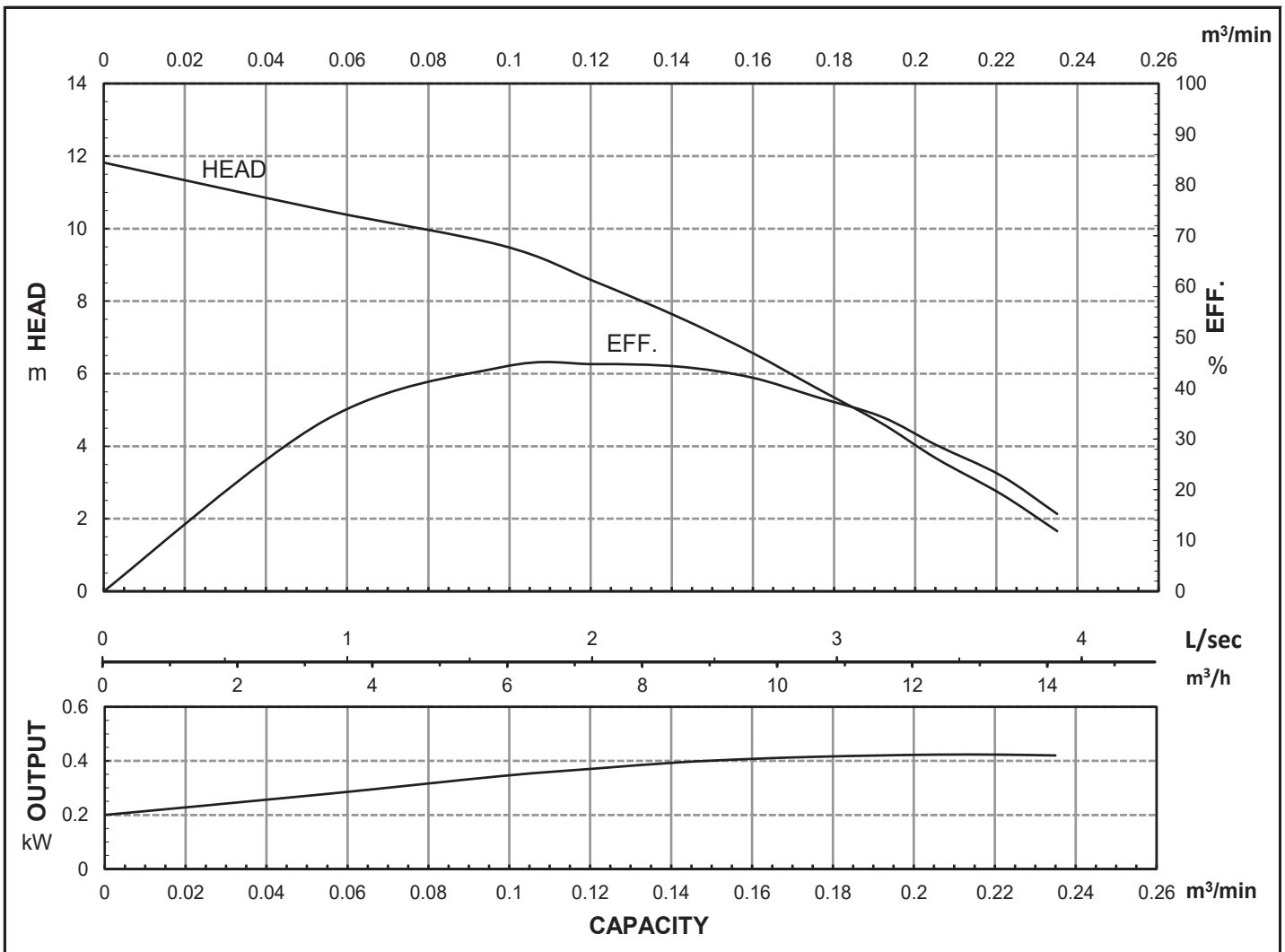


# HCP PUMP

FILE NO. PC-M-E5-A05B3

## PUMP PERFORMANCE CURVES

MODEL	A-05B					VER. NO. AI0710	
	STANDARD SPECIFICATION					REFERENCE SPECIFICATION	
FREQUENCY	50 Hz						
DISCHARGE	2	inch /		50	mm		
OUTPUT	0.5	HP /		0.4	HP	kW	
HEAD	8 m						
CAPACITY	0.12 m <sup>3</sup> /min						
PHASE/VOLTAGE	3 Ø	230 V	380 V	400 V	415 V	525 V	Ø V
RATED CURRENT		2.0 A	1.2 A	1.1 A	1.1 A	0.9 A	A
POLE / rpm	2	P /		2780	rpm		
START METHOD	DIRECT						
INSULATION CLASS	B						
REMARK							



HCP PUMP MANUFACTURER CO., LTD.

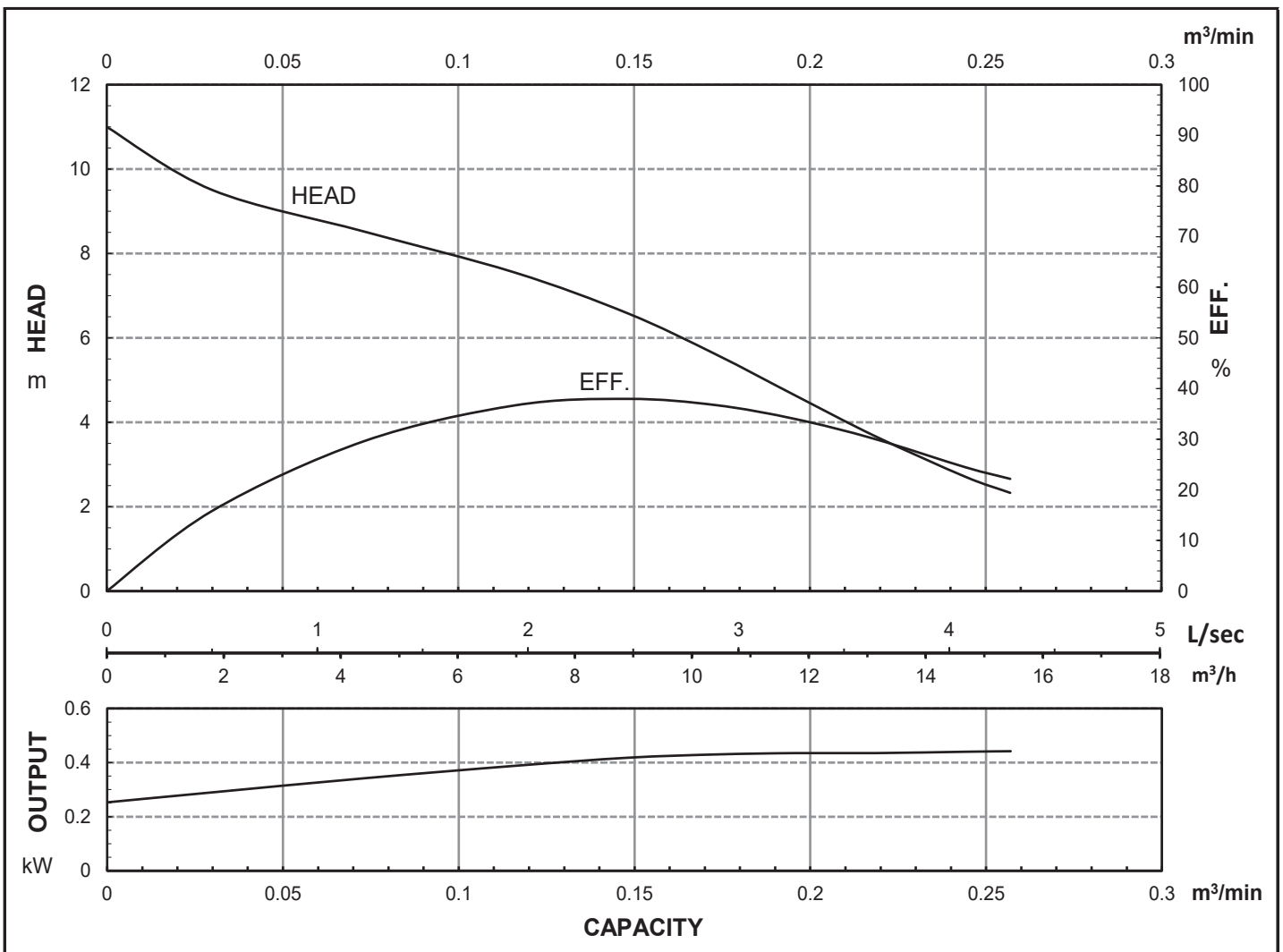


# HCP PUMP

FILE NO. PC-M-E5-A05L1

## PUMP PERFORMANCE CURVES

MODEL	A-05L					VER. NO. A10710
	STANDARD SPECIFICATION					REFERENCE SPECIFICATION
FREQUENCY	50					Hz
DISCHARGE	2	inch	/	50	mm	
OUTPUT	0.5	HP	/	0.4	kW	HP      kW
HEAD	6.5					m
CAPACITY	0.15					m <sup>3</sup> /min
PHASE/VOLTAGE	1 Ø	110 V	220 V	230 V	240 V	Ø      V
RATED CURRENT		6.8 A	3.4 A	3.3 A	3.2 A	A
POLE / rpm	2	P	/	2780	rpm	
START METHOD	CAPACITOR					
INSULATION CLASS	B					
REMARK						



HCP PUMP MANUFACTURER CO., LTD.

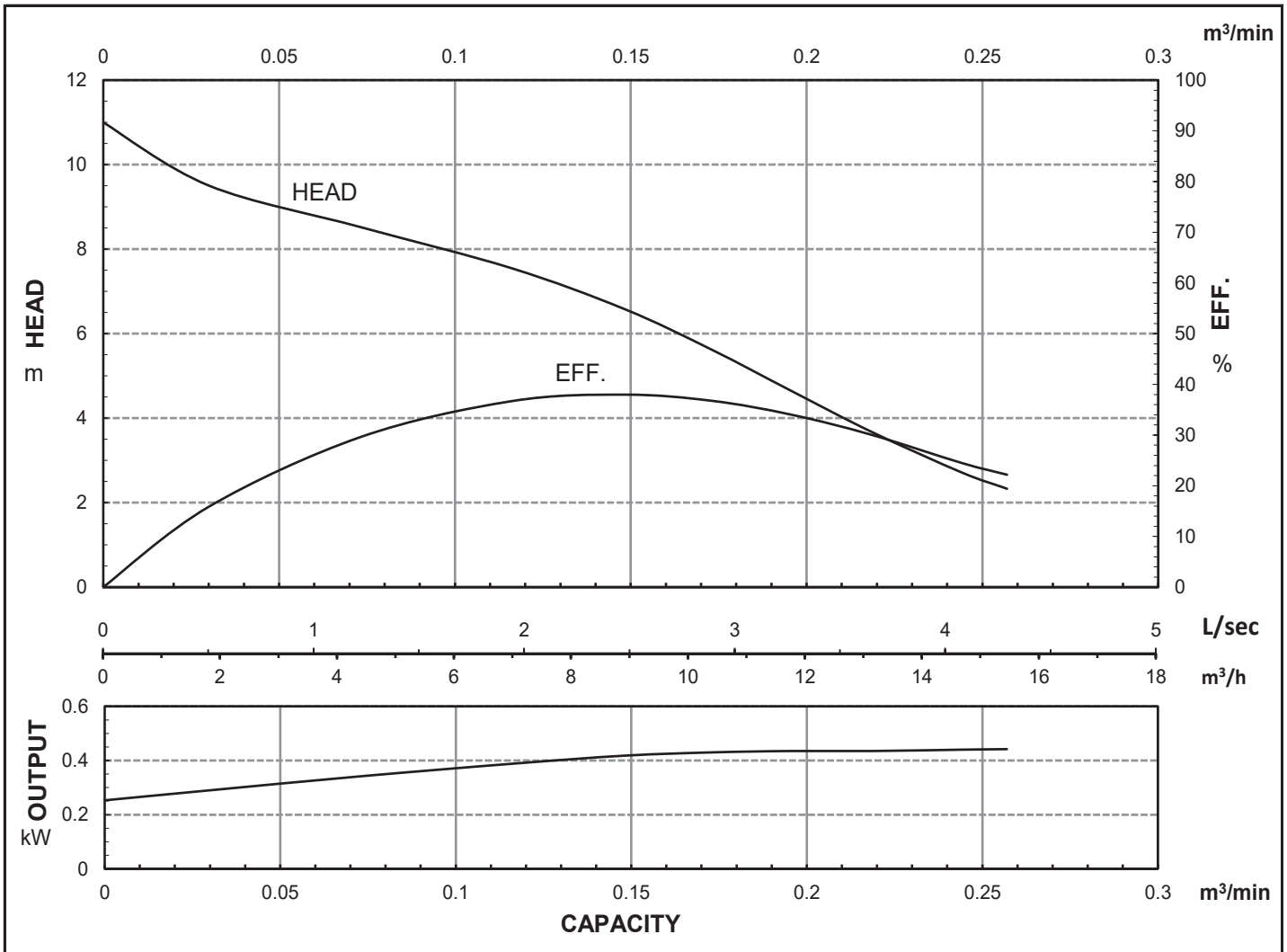


# HCP PUMP

FILE NO. PC-M-E5-A05L3

## PUMP PERFORMANCE CURVES

MODEL	A-05L					VER. NO. AI0710	
	STANDARD SPECIFICATION					REFERENCE SPECIFICATION	
FREQUENCY	50 Hz						
DISCHARGE	2	inch /		50	mm		
OUTPUT	0.5	HP /		0.4	HP	kW	
HEAD	6.5 m						
CAPACITY	0.15 m <sup>3</sup> /min						
PHASE/VOLTAGE	3 Ø	230 V	380 V	400 V	415 V	525 V	Ø V
RATED CURRENT		2.3 A	1.4 A	1.3 A	1.3 A	1.1 A	A
POLE / rpm	2	P /		2780	rpm		
START METHOD	DIRECT						
INSULATION CLASS	B						
REMARK							



HCP PUMP MANUFACTURER CO., LTD.

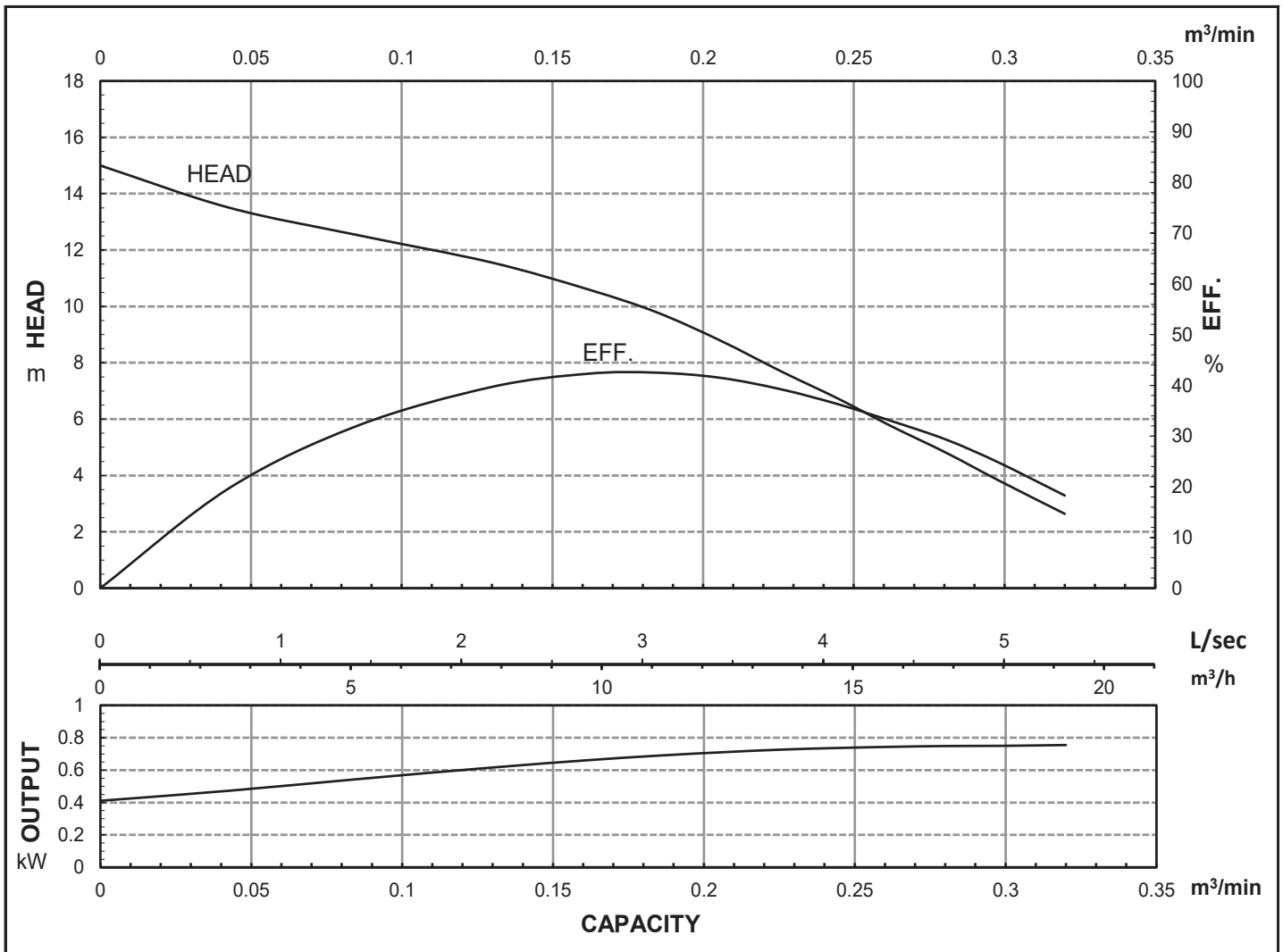


# HCP PUMP

FILE NO. PC-M-E5-A211

## PUMP PERFORMANCE CURVES

MODEL	A-21					VER. NO. AI0710	
	STANDARD SPECIFICATION					REFERENCE SPECIFICATION	
FREQUENCY	50 Hz						
DISCHARGE	2	inch /		50	mm		
OUTPUT	1	HP /		0.75	HP	kW	
HEAD	10 m						
CAPACITY	0.17 m <sup>3</sup> /min						
PHASE/VOLTAGE	1 ∅	110 V	220 V	230 V	240 V	∅	V
RATED CURRENT		10.8 A	5.4 A	5.2 A	5.0 A		A
POLE / rpm	2	P /		2800	rpm		
START METHOD	CAPACITOR						
INSULATION CLASS	B						
REMARK							



HCP PUMP MANUFACTURER CO., LTD.



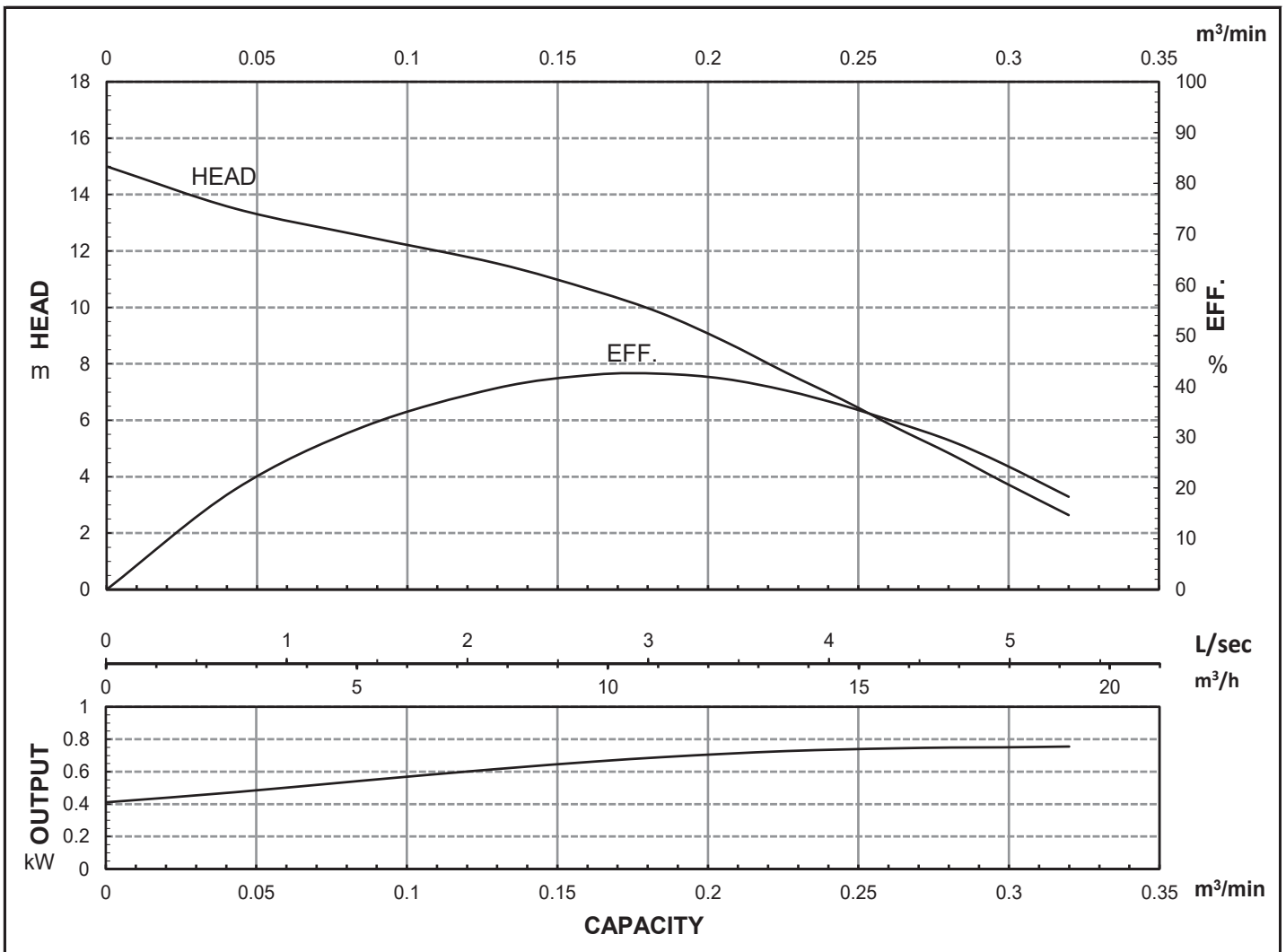


# HCP PUMP

FILE NO. PC-M-E5-A213

## PUMP PERFORMANCE CURVES

MODEL	A-21					VER. NO. AI0710	
	STANDARD SPECIFICATION					REFERENCE SPECIFICATION	
FREQUENCY	50 Hz						
DISCHARGE	2	inch	/	50	mm		
OUTPUT	1	HP	/	0.75	kW	HP	kW
HEAD	10 m						
CAPACITY	0.17 m <sup>3</sup> /min						
PHASE/VOLTAGE	3 Ø	230 V	380 V	400 V	415 V	525 V	Ø V
RATED CURRENT		3.3 A	2.0 A	1.9 A	1.8 A	1.4 A	A
POLE / rpm	2	P	/	2800	rpm		
START METHOD	DIRECT						
INSULATION CLASS	B						
REMARK							



HCP PUMP MANUFACTURER CO., LTD.

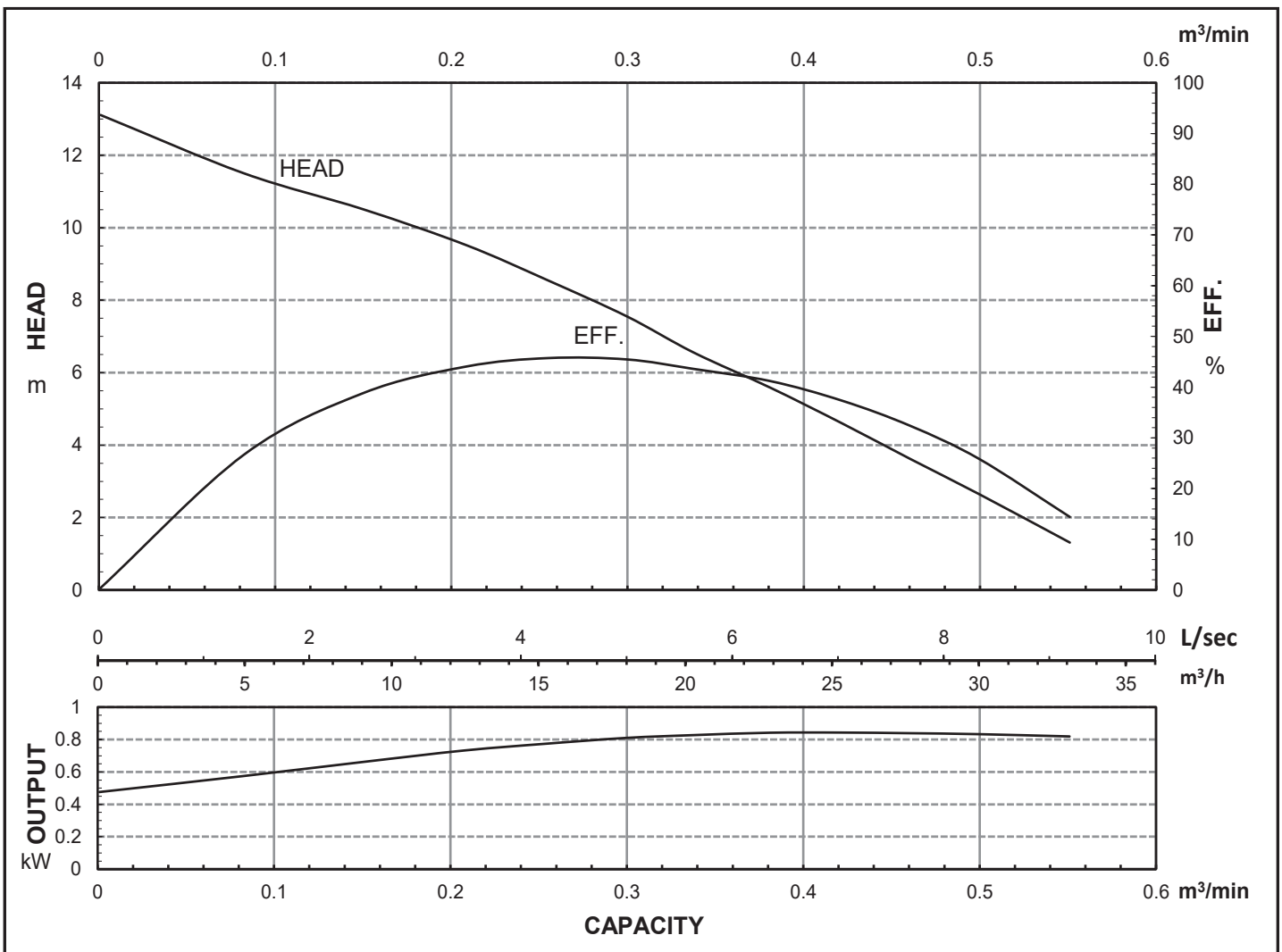


# HCP PUMP

FILE NO. PC-M-E5-A311

## PUMP PERFORMANCE CURVES

MODEL	A-31					VER. NO. AI0819
	STANDARD SPECIFICATION					REFERENCE SPECIFICATION
FREQUENCY	50					Hz
DISCHARGE	3	inch /			80	mm
OUTPUT	1	HP /			0.75	kW
HEAD	7					m
CAPACITY	0.3					m <sup>3</sup> /min
PHASE/VOLTAGE	1 ∅	110 V	220 V	230 V	240 V	
RATED CURRENT		10.8 A	5.4 A	5.2 A	5.0 A	
POLE / rpm	2	P /			2800	rpm
START METHOD	CAPACITOR					
INSULATION CLASS	B					
REMARK						



HCP PUMP MANUFACTURER CO., LTD.

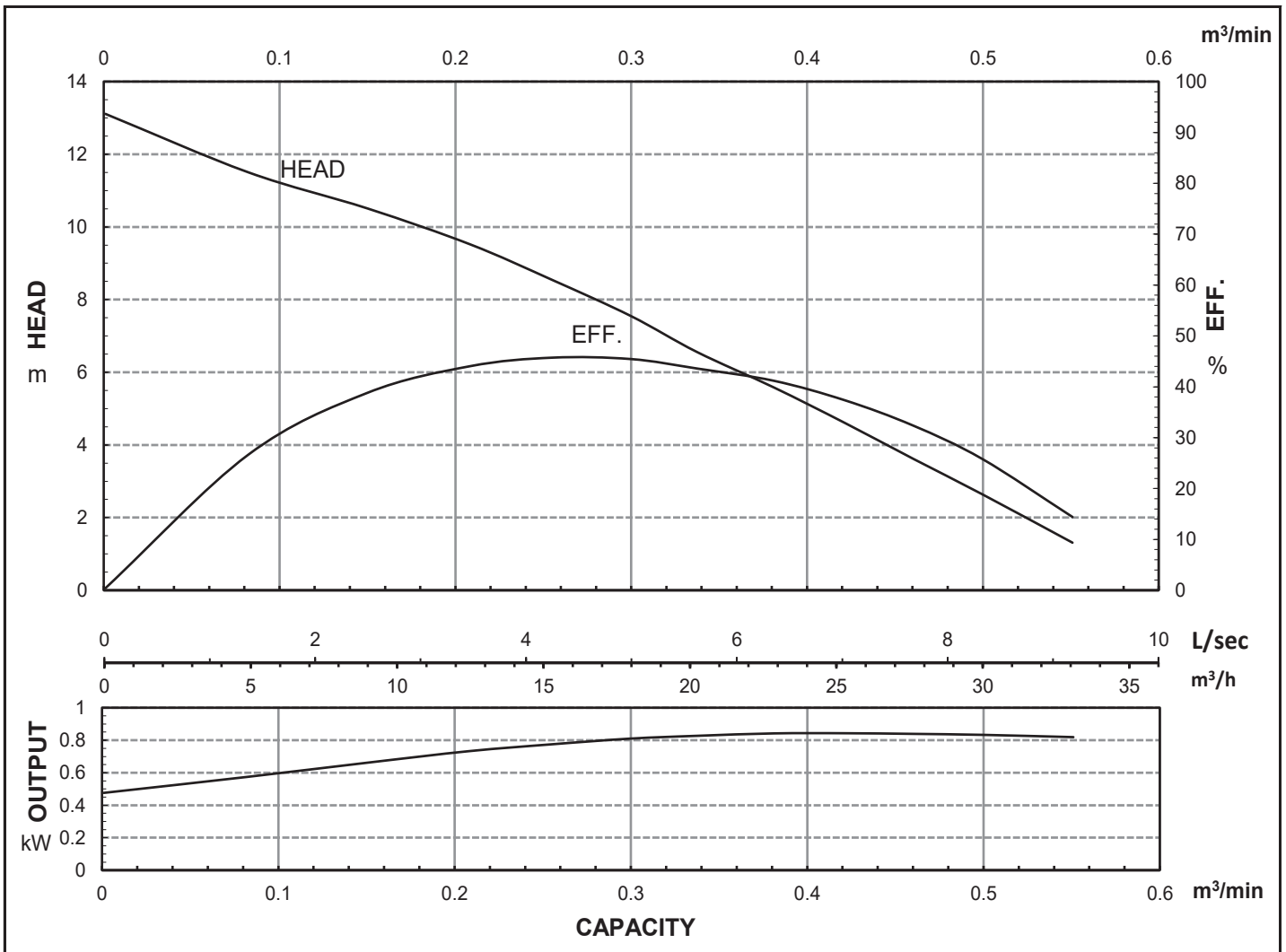


# HCP PUMP

FILE NO. PC-M-E5-A313

## PUMP PERFORMANCE CURVES

MODEL	A-31					VER. NO. AI0819	
	STANDARD SPECIFICATION					REFERENCE SPECIFICATION	
FREQUENCY	50 Hz						
DISCHARGE	3	inch	/	80	mm		
OUTPUT	1	HP	/	0.75	kW	HP	kW
HEAD	7 m						
CAPACITY	0.3 m <sup>3</sup> /min						
PHASE/VOLTAGE	3 Ø	230 V	380 V	400 V	415 V	525 V	Ø V
RATED CURRENT		3.3 A	2.0 A	1.9 A	1.8 A	1.4 A	A
POLE / rpm	2	P	/	2800	rpm		
START METHOD	DIRECT						
INSULATION CLASS	B						
REMARK							



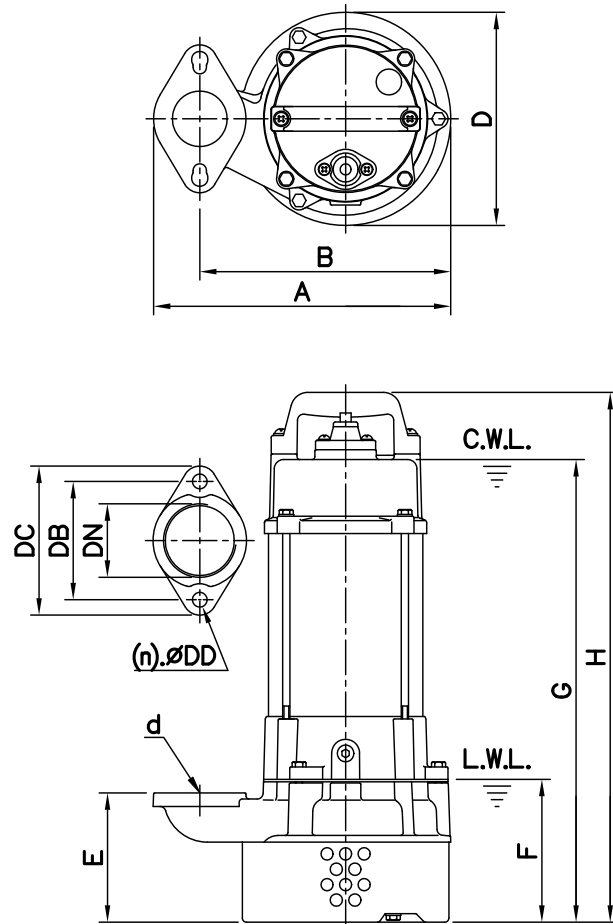
HCP PUMP MANUFACTURER CO., LTD.

## DIMENSIONS

NO: S3A00208032-02

MODEL: A-05A / 05B / 05L / 21 / 31

1Ø / 3Ø



Flange	
Female Thread	
PF	NPT

Dimensions-mm

Weight:kg

Model	d	A	B	D	E	F	G	H	WT1	Elbow (Flange)Set	DN	DB	DC	DD	(n)QTY	WT2
A-05A 1Ø	50	225	190	161	86	88	294	349	12	EF2-84	50	84	106	10	2	1
A-05B 1Ø	50	225	190	161	86	88	316	371	13	EF2-84	50	84	106	10	2	1
A-05B 3Ø	50	225	190	161	86	88	316	371	12	EF2-84	50	84	106	10	2	1
A-05L 1Ø	50	245	207	173	105	116	376	430	16	EF2-96	50	96	121	12	2	1
A-05L 3Ø	50	245	207	173	105	116	376	430	14	EF2-96	50	96	121	12	2	1
A-21 1Ø	50	245	207	173	105	116	376	430	17	EF2-96	50	96	121	12	2	1
A-21 3Ø	50	245	207	173	105	116	376	430	15	EF2-96	50	96	121	12	2	1
A-31 1Ø	80	276	222	173	120	131	391	445	18	EF3-130	80	130	155	12	2	1
A-31 3Ø	80	276	222	173	120	131	391	445	17	EF3-130	80	130	155	12	2	1

Dimensions-inch

Weight:lb

Model	d	A	B	D	E	F	G	H	WT1	Elbow (Flange)Set	DN	DB	DC	DD	(n)QTY	WT2
A-05A 1Ø	2	8 <sup>7</sup> / <sub>8</sub>	7 <sup>1</sup> / <sub>2</sub>	6 <sup>5</sup> / <sub>16</sub>	3 <sup>3</sup> / <sub>8</sub>	3 <sup>7</sup> / <sub>16</sub>	11 <sup>1</sup> / <sub>16</sub>	13 <sup>3</sup> / <sub>4</sub>	26	EF2-84	2	3 <sup>3</sup> / <sub>16</sub>	4 <sup>3</sup> / <sub>16</sub>	3/ <sub>8</sub>	2	2
A-05B 1Ø	2	8 <sup>7</sup> / <sub>8</sub>	7 <sup>1</sup> / <sub>2</sub>	6 <sup>5</sup> / <sub>16</sub>	3 <sup>3</sup> / <sub>8</sub>	3 <sup>7</sup> / <sub>16</sub>	12 <sup>1</sup> / <sub>16</sub>	14 <sup>5</sup> / <sub>8</sub>	29	EF2-84	2	3 <sup>3</sup> / <sub>16</sub>	4 <sup>3</sup> / <sub>16</sub>	3/ <sub>8</sub>	2	2
A-05B 3Ø	2	8 <sup>7</sup> / <sub>8</sub>	7 <sup>1</sup> / <sub>2</sub>	6 <sup>5</sup> / <sub>16</sub>	3 <sup>3</sup> / <sub>8</sub>	3 <sup>7</sup> / <sub>16</sub>	12 <sup>1</sup> / <sub>16</sub>	14 <sup>5</sup> / <sub>8</sub>	26	EF2-84	2	3 <sup>3</sup> / <sub>16</sub>	4 <sup>3</sup> / <sub>16</sub>	3/ <sub>8</sub>	2	2
A-05L 1Ø	2	9 <sup>5</sup> / <sub>8</sub>	8 <sup>1</sup> / <sub>8</sub>	6 <sup>13</sup> / <sub>16</sub>	4 <sup>1</sup> / <sub>8</sub>	4 <sup>9</sup> / <sub>16</sub>	14 <sup>13</sup> / <sub>16</sub>	16 <sup>15</sup> / <sub>16</sub>	35	EF2-96	2	3 <sup>3</sup> / <sub>4</sub>	4 <sup>3</sup> / <sub>4</sub>	1/ <sub>2</sub>	2	2
A-05L 3Ø	2	9 <sup>5</sup> / <sub>8</sub>	8 <sup>1</sup> / <sub>8</sub>	6 <sup>13</sup> / <sub>16</sub>	4 <sup>1</sup> / <sub>8</sub>	4 <sup>9</sup> / <sub>16</sub>	14 <sup>13</sup> / <sub>16</sub>	16 <sup>15</sup> / <sub>16</sub>	31	EF2-96	2	3 <sup>3</sup> / <sub>4</sub>	4 <sup>3</sup> / <sub>4</sub>	1/ <sub>2</sub>	2	2
A-21 1Ø	2	9 <sup>5</sup> / <sub>8</sub>	8 <sup>1</sup> / <sub>8</sub>	6 <sup>13</sup> / <sub>16</sub>	4 <sup>1</sup> / <sub>8</sub>	4 <sup>9</sup> / <sub>16</sub>	14 <sup>13</sup> / <sub>16</sub>	16 <sup>15</sup> / <sub>16</sub>	37	EF2-96	2	3 <sup>3</sup> / <sub>4</sub>	4 <sup>3</sup> / <sub>4</sub>	1/ <sub>2</sub>	2	2
A-21 3Ø	2	9 <sup>5</sup> / <sub>8</sub>	8 <sup>1</sup> / <sub>8</sub>	6 <sup>13</sup> / <sub>16</sub>	4 <sup>1</sup> / <sub>8</sub>	4 <sup>9</sup> / <sub>16</sub>	14 <sup>13</sup> / <sub>16</sub>	16 <sup>15</sup> / <sub>16</sub>	33	EF2-96	2	3 <sup>3</sup> / <sub>4</sub>	4 <sup>3</sup> / <sub>4</sub>	1/ <sub>2</sub>	2	2
A-31 1Ø	3	10 <sup>7</sup> / <sub>8</sub>	8 <sup>3</sup> / <sub>4</sub>	6 <sup>13</sup> / <sub>16</sub>	4 <sup>3</sup> / <sub>4</sub>	5 <sup>3</sup> / <sub>16</sub>	15 <sup>3</sup> / <sub>8</sub>	17 <sup>1</sup> / <sub>2</sub>	40	EF3-130	3	5 <sup>1</sup> / <sub>8</sub>	6 <sup>1</sup> / <sub>8</sub>	1/ <sub>2</sub>	2	2
A-31 3Ø	3	10 <sup>7</sup> / <sub>8</sub>	8 <sup>3</sup> / <sub>4</sub>	6 <sup>13</sup> / <sub>16</sub>	4 <sup>3</sup> / <sub>4</sub>	5 <sup>3</sup> / <sub>16</sub>	15 <sup>3</sup> / <sub>8</sub>	17 <sup>1</sup> / <sub>2</sub>	37	EF3-130	3	5 <sup>1</sup> / <sub>8</sub>	6 <sup>1</sup> / <sub>8</sub>	1/ <sub>2</sub>	2	2

C.W.L.:Continuous Running Water Level  
L.W.L.:Lowest Running Water Level

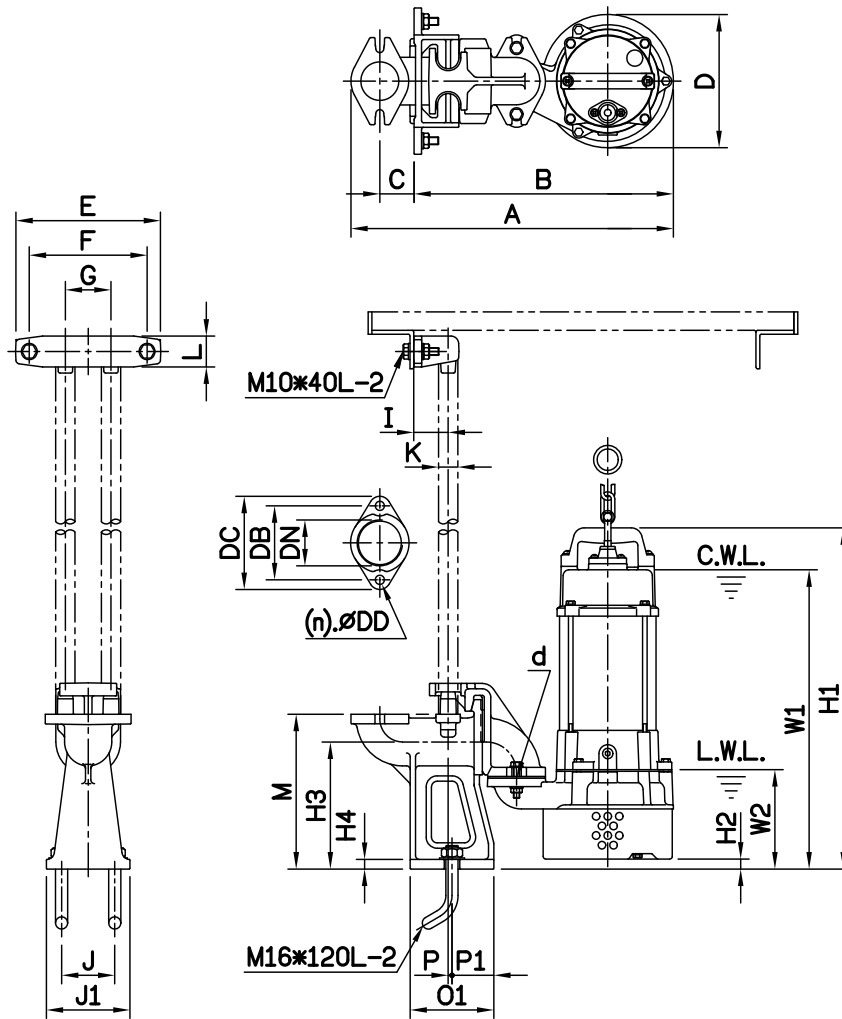
WT1:Pump Weight(Without Cable)  
WT2:Elbow Set Weight

## DIMENSIONS

NO: T2A00208032-01

MODEL: A-05A / 05B / 05L / 21

1Ø / 3Ø



Flange	
Female Thread	
PF	NPT

Dimensions—mm

Elbow (Flange) Set	DN	DB	DC	DD	(n)QTY
EF2-96	50	96	121	12	2

Dimensions—inch

Elbow (Flange) Set	DN	DB	DC	DD	(n)QTY
EF2-96	2	3¾	4¾	½	2

Dimensions—mm

Weight:kg

Model	d	A	B	C	D	E	F	G	I	J	J1	K	L	M	O1	P	P1	W1	W2	H1	H2	H3	H4	WT1	GRS Set	WT2
A-05A 1Ø	50	408	325	45	161	190	155	60	45	70	110	¾"	40	201	110	5	55	327	120	381	33	165	13	12	T2-50	9
A-05B 1Ø	50	408	325	45	161	190	155	60	45	70	110	¾"	40	201	110	5	55	349	120	403	33	165	13	13	T2-50	9
A-05B 3Ø	50	408	325	45	161	190	155	60	45	70	110	¾"	40	201	110	5	55	349	120	403	33	165	13	12	T2-50	9
A-05L 1Ø	50	425	342	45	173	190	155	60	45	70	110	¾"	40	201	110	5	55	389	129	443	13	165	13	16	T2-50	9
A-05L 3Ø	50	425	342	45	173	190	155	60	45	70	110	¾"	40	201	110	5	55	389	129	443	13	165	13	14	T2-50	9
A-21 1Ø	50	425	342	45	173	190	155	60	45	70	110	¾"	40	201	110	5	55	389	129	443	13	165	13	17	T2-50	9
A-21 3Ø	50	425	342	45	173	190	155	60	45	70	110	¾"	40	201	110	5	55	389	129	443	13	165	13	15	T2-50	9

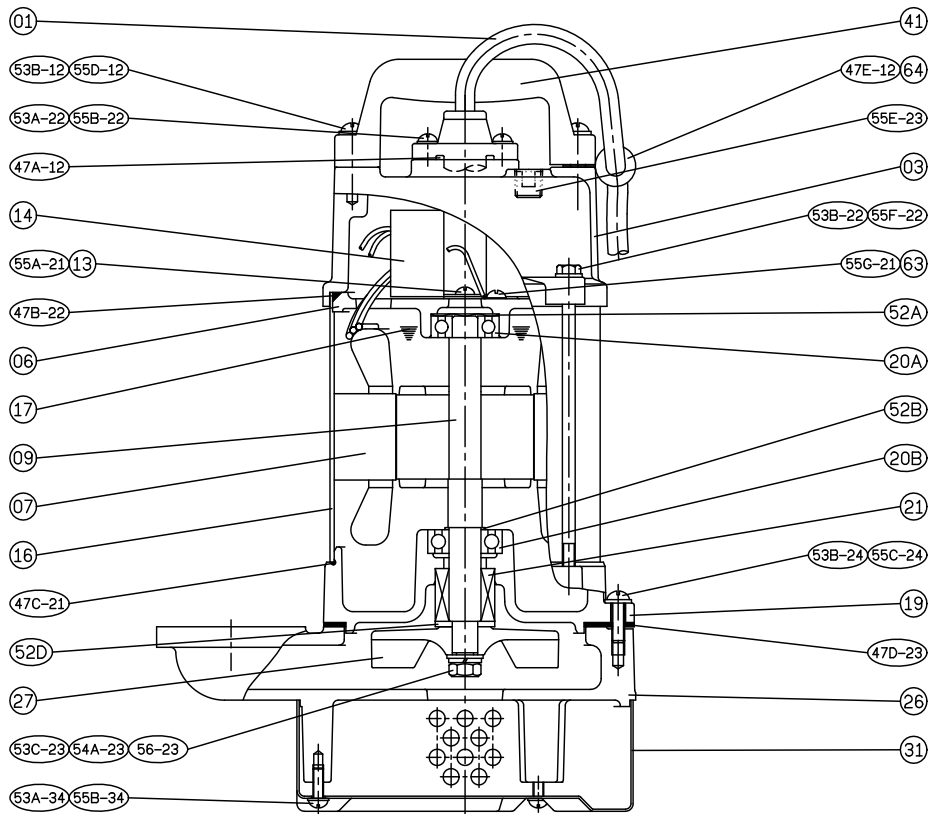
Dimensions—inch

Weight:lb

Model	d	A	B	C	D	E	F	G	I	J	J1	K	L	M	O1	P	P1	W1	W2	H1	H2	H3	H4	WT1	GRS Set	WT2
A-05A 1Ø	2	16¼	12¾	1¾	6⅝	7½	6⅞	2⅜	1¾	2¾	4⅝	¾	1⅞	7⅝	4⅝	¾	2⅜	12⅞	4¾	15	1⅝	6½	½	26	T2-50	20
A-05B 1Ø	2	16¼	12¾	1¾	6⅝	7½	6⅞	2⅜	1¾	2¾	4⅝	¾	1⅞	7⅝	4⅝	¾	2⅜	13¾	4¾	15⅝	1⅝	6½	½	29	T2-50	20
A-05B 3Ø	2	16¼	12¾	1¾	6⅝	7½	6⅞	2⅜	1¾	2¾	4⅝	¾	1⅞	7⅝	4⅝	¾	2⅜	13¾	4¾	15⅝	1⅝	6½	½	26	T2-50	20
A-05L 1Ø	2	16¾	13⅞	1¾	6⅝	7½	6⅞	2⅜	1¾	2¾	4⅝	¾	1⅞	7⅝	4⅝	¾	2⅜	15⅝	5⅝	17⅝	½	6½	½	35	T2-50	20
A-05L 3Ø	2	16¾	13⅞	1¾	6⅝	7½	6⅞	2⅜	1¾	2¾	4⅝	¾	1⅞	7⅝	4⅝	¾	2⅜	15⅝	5⅝	17⅝	½	6½	½	31	T2-50	20
A-21 1Ø	2	16¾	13⅞	1¾	6⅝	7½	6⅞	2⅜	1¾	2¾	4⅝	¾	1⅞	7⅝	4⅝	¾	2⅜	15⅝	5⅝	17⅝	½	6½	½	37	T2-50	20
A-21 3Ø	2	16¾	13⅞	1¾	6⅝	7½	6⅞	2⅜	1¾	2¾	4⅝	¾	1⅞	7⅝	4⅝	¾	2⅜	15⅝	5⅝	17⅝	½	6½	½	33	T2-50	20

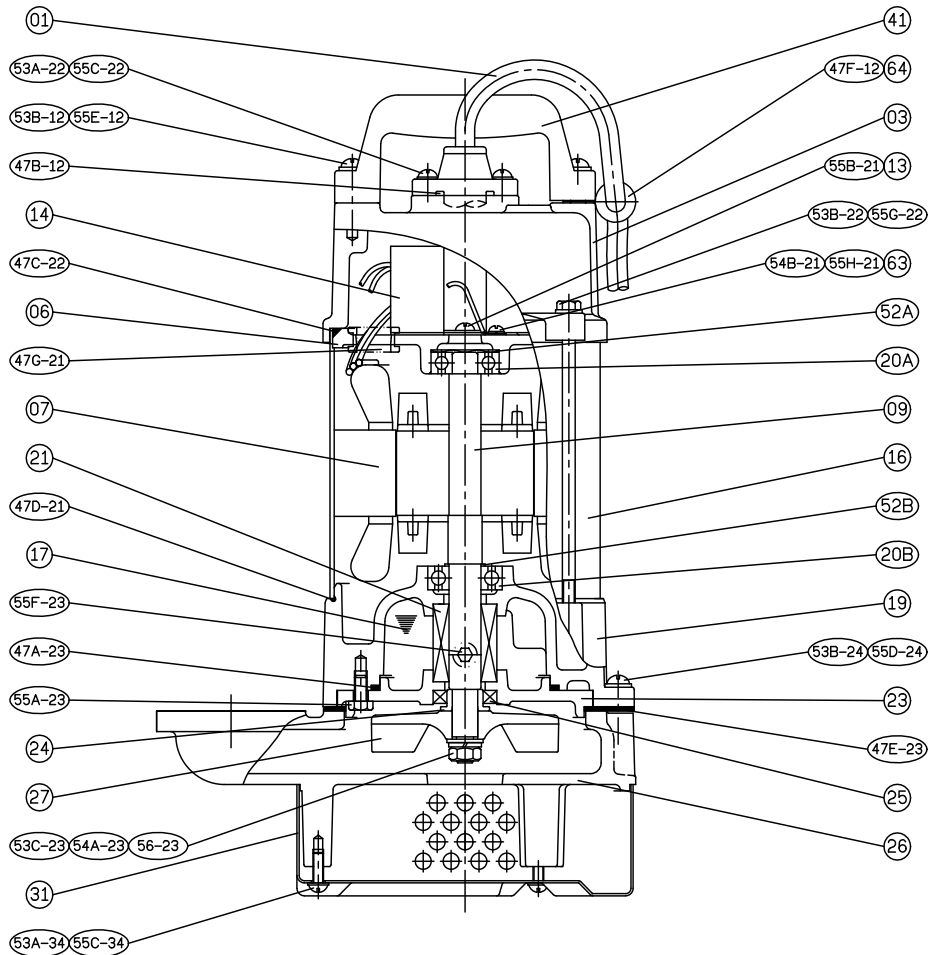
C.W.L.:Continuous Running Water Level  
L.W.L.:Lowest Running Water Level

WT1:Pump Weight(Without Cable)  
WT2:GRS Set Weight



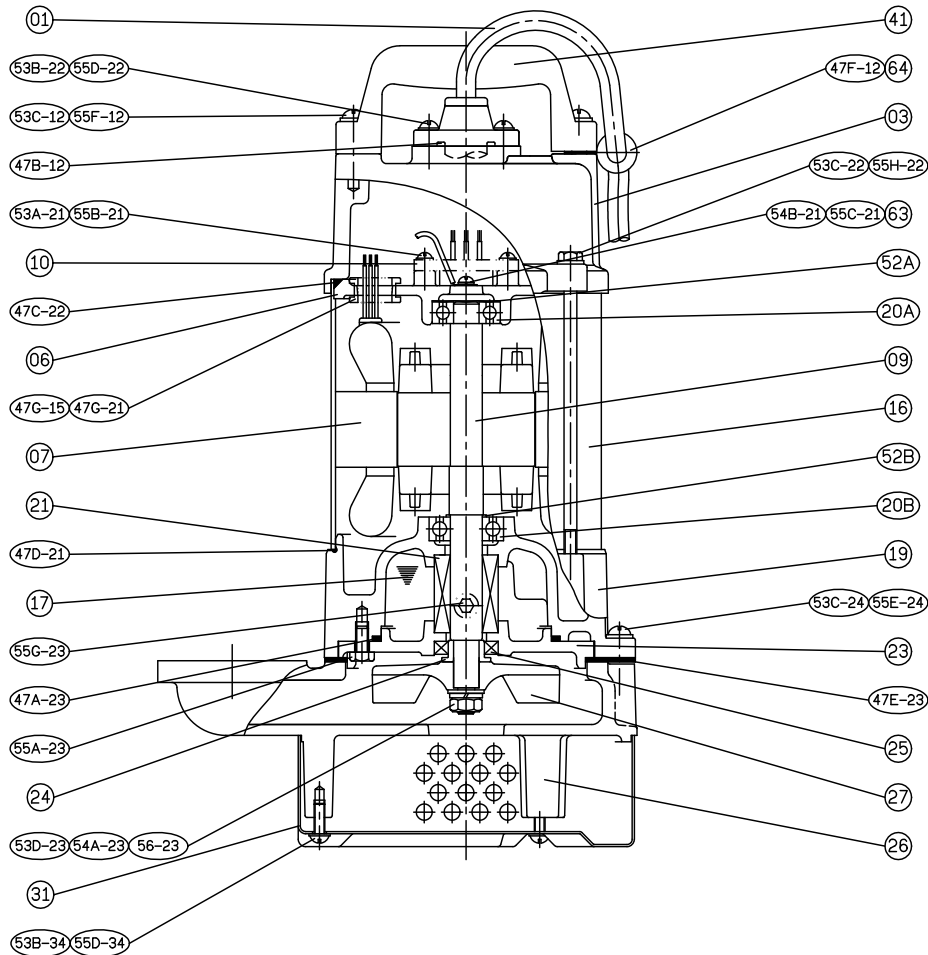
No.	Part name	Material	QTY	Remark
01	Cable		1	
03	Upper cover	FC200	1	
06	Bracket	FC200	1	
07	Stator		1	
09	Shaft end	SUS410	1	
14	Capacitor		1	
16	Motor frame	SUS304	1	
17	Transformer oil			
19	Bearing bracket	FC200	1	
20A	Bearing		1	
20B	Bearing		1	
21	M.seal	CA/CE	1	
26	Casing	FC200	1	

No.	Part name	Material	QTY	Remark
27	Impeller	PA+G50	1	
31	Strainer	SUS304	1	
41	Handle	ABS	1	
47	Packing			



No.	Part name	Material	QTY	Remark
01	Cable		1	
03	Upper cover	FC200	1	
06	Bracket	FC200	1	
07	Stator		1	
09	Shaft end	SUS410	1	
14	Capacitor		1	
16	Motor frame	SUS304	1	
17	Lubricant			
19	Bearing bracket	FC200	1	
20A	Bearing		1	
20B	Bearing		1	
21	M.seal	CA / CE & SIC / SIC	1	
23	M. seal bracket	FC200	1	

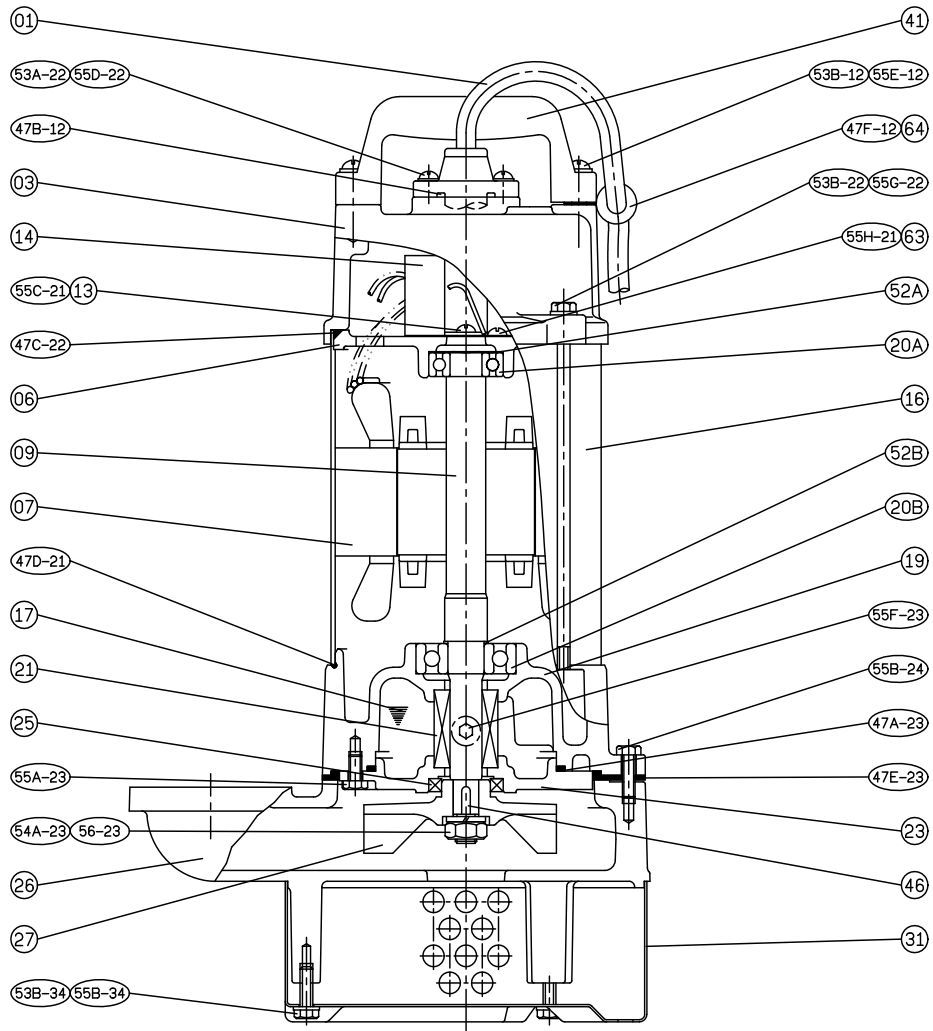
No.	Part name	Material	QTY	Remark
24	Oil seal bush	SUS304L	1	
25	Oil seal	NBR	1	
26	Casing	FC200	1	
27	Impeller	PA+G50	1	
31	Strainer	SUS304	1	
41	Handle	ABS	1	
47	Packing			



No.	Part name	Material	QTY	Remark
01	Cable		1	
03	Upper cover	FC200	1	
06	Bracket	FC200	1	
07	Stator		1	
09	Shaft end	SUS410	1	
10	Auto-cut Protector		1	
16	Motor frame	SUS304	1	
17	Lubricant			
19	Bearing bracket	FC200	1	
20A	Bearing		1	
20B	Bearing		1	
21	M.seal	CA / CE & SIC / SIC	1	
23	M. seal bracket	FC200	1	

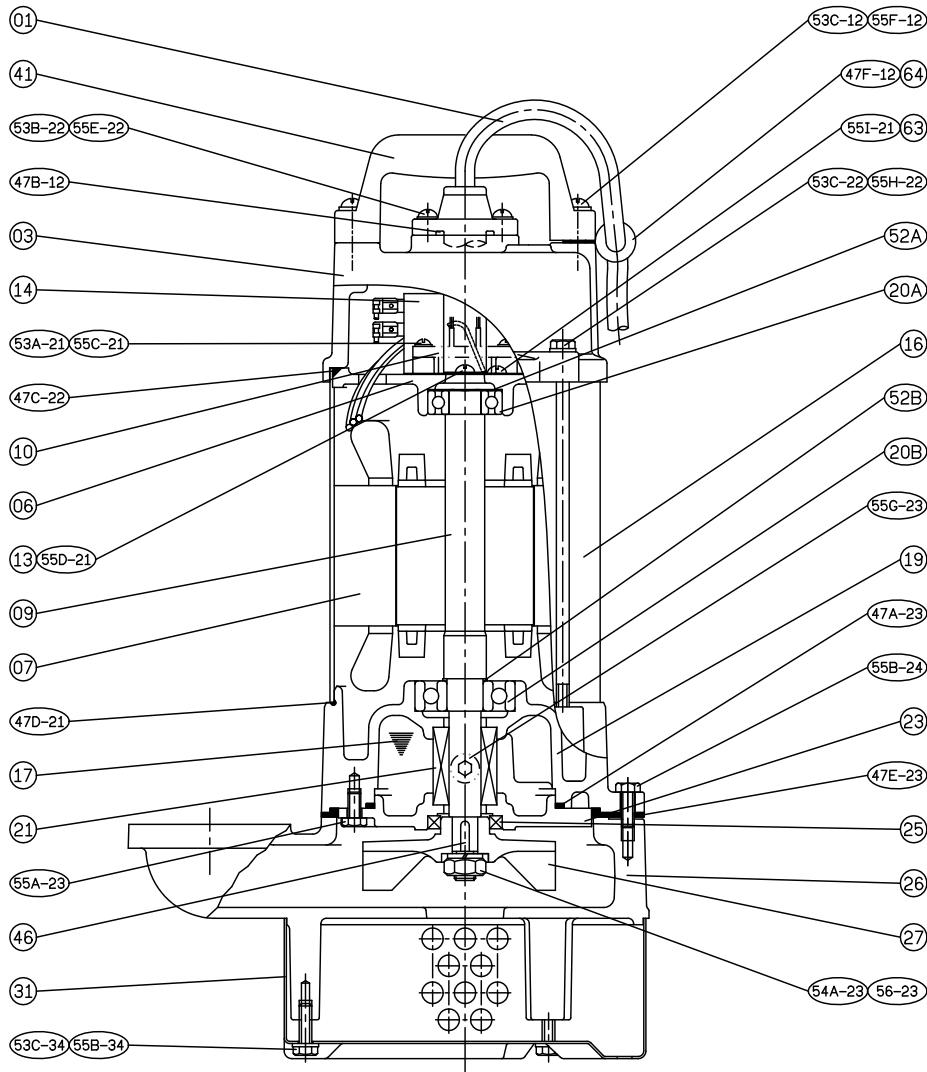
No.	Part name	Material	QTY	Remark
24	Oil seal bush	SUS304L	1	
25	Oil seal	NBR	1	
26	Casing	FC200	1	
27	Impeller	PA+G50	1	
31	Strainer	SUS304	1	
41	Handle	ABS	1	
47	Packing			



**SECTIONAL VIEWS****NO: 02A00205L10-1****MODEL: A-05L****10**

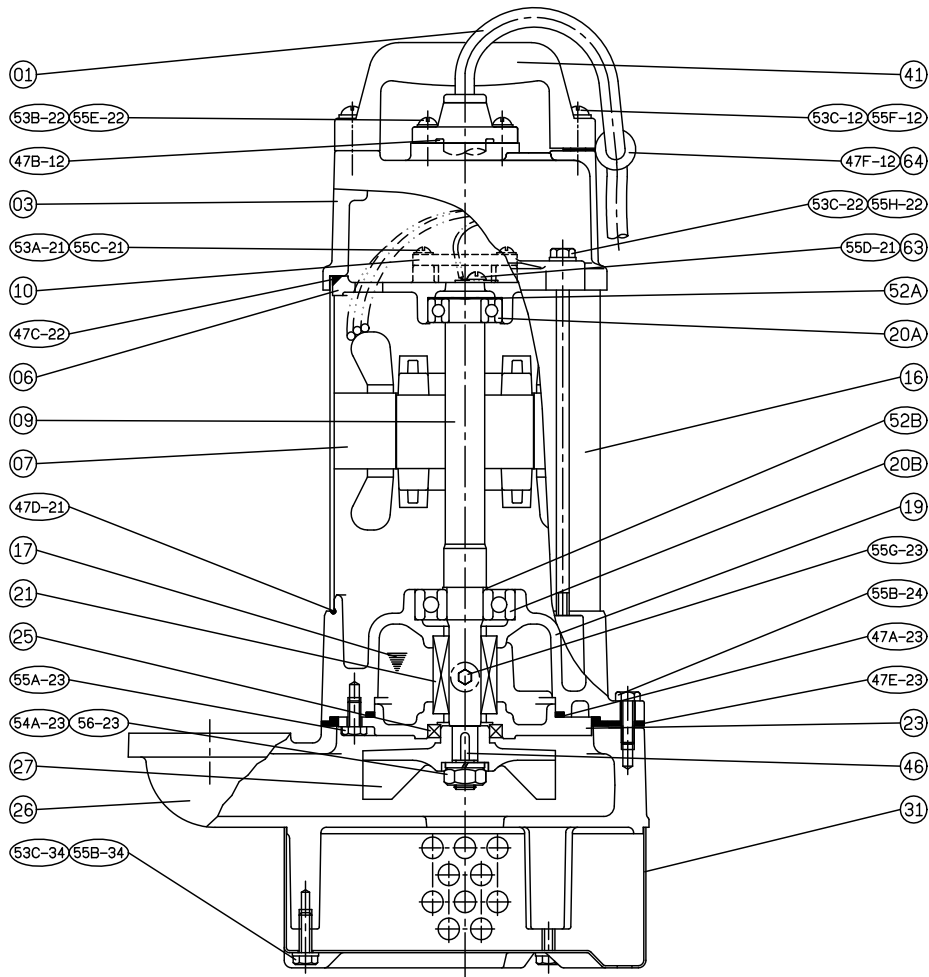
No.	Part name	Material	QTY	Remark
01	Cable		1	
03	Upper cover	FC200	1	
06	Bracket	FC200	1	
07	Stator		1	
09	Shaft end	SUS410	1	
14	Capacitor		1	
16	Motor frame	SUS304	1	
17	Lubricant			
19	Bearing bracket	FC200	1	
20A	Bearing		1	
20B	Bearing		1	
21	M.seal	CA / CE & SIC / SIC	1	
23	M. seal bracket	FC200	1	

No.	Part name	Material	QTY	Remark
25	Oil seal	NBR	1	
26	Casing	FC200	1	
27	Impeller	FC200	1	
31	Strainer	SUS304	1	
41	Handle	ABS	1	
46	Impeller key	SUS304	1	
47	Packing			



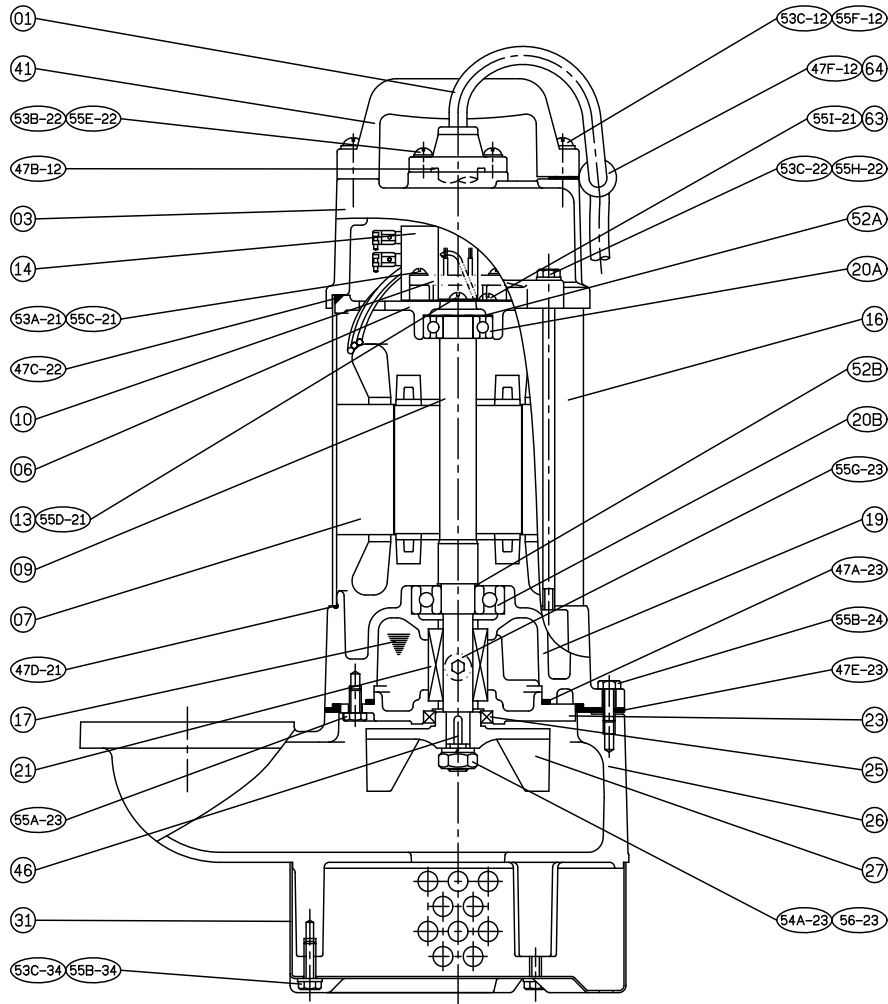
No.	Part name	Material	QTY	Remark
01	Cable		1	
03	Upper cover	FC200	1	
06	Bracket	FC200	1	
07	Stator		1	
09	Shaft end	SUS410	1	
10	Auto-cut Protector		1	
14	Capacitor		1	
16	Motor frame	SUS304	1	
17	Lubricant			
19	Bearing bracket	FC200	1	
20A	Bearing		1	
20B	Bearing		1	
21	M.seal	CA / CE & SIC / SIC	1	

No.	Part name	Material	QTY	Remark
23	M. seal bracket	FC200	1	
25	Oil seal	NBR	1	
26	Casing	FC200	1	
27	Impeller	FC200	1	
31	Strainer	SUS304	1	
41	Handle	ABS	1	
46	Impeller key	SUS304	1	
47	Packing			



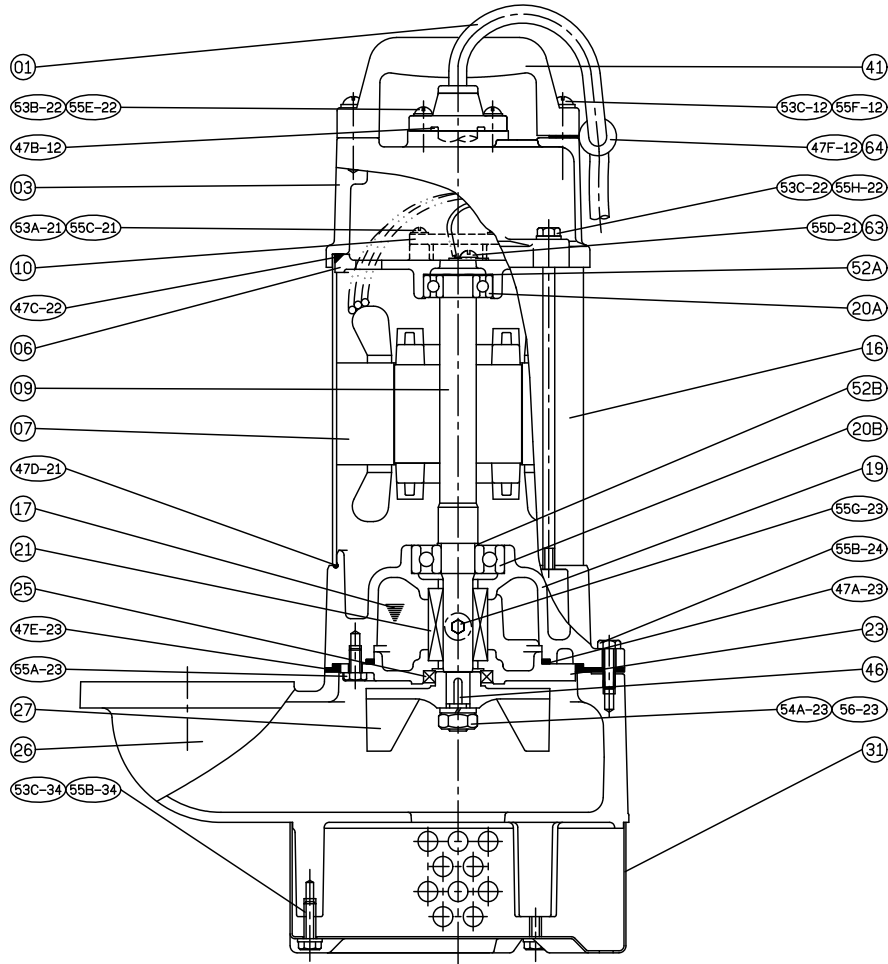
No.	Part name	Material	QTY	Remark
01	Cable		1	
03	Upper cover	FC200	1	
06	Bracket	FC200	1	
07	Stator		1	
09	Shaft end	SUS410	1	
10	Auto-cut Protector		1	
16	Motor frame	SUS304	1	
17	Lubricant			
19	Bearing bracket	FC200	1	
20A	Bearing		1	
20B	Bearing		1	
21	M.seal	CA / CE & SIC / SIC	1	
23	M. seal bracket	FC200	1	

No.	Part name	Material	QTY	Remark
25	Oil seal	NBR	1	
26	Casing	FC200	1	
27	Impeller	FC200	1	
31	Strainer	SUS304	1	
41	Handle	ABS	1	
46	Impeller key	SUS304	1	
47	Packing			



No.	Part name	Material	QTY	Remark
01	Cable		1	
03	Upper cover	FC200	1	
06	Bracket	FC200	1	
07	Stator		1	
09	Shaft end	SUS410	1	
10	Auto-cut Protector		1	
14	Capacitor		1	
16	Motor frame	SUS304	1	
17	Lubricant			
19	Bearing bracket	FC200	1	
20A	Bearing		1	
20B	Bearing		1	
21	M.seal	CA / CE & SIC / SIC	1	

No.	Part name	Material	QTY	Remark
23	M. seal bracket	FC200	1	
25	Oil seal	NBR	1	
26	Casing	FC200	1	
27	Impeller	FC200	1	
31	Strainer	SUS304	1	
41	Handle	ABS	1	
46	Impeller key	SUS304	1	
47	Packing			



No.	Part name	Material	QTY	Remark
01	Cable		1	
03	Upper cover	FC200	1	
06	Bracket	FC200	1	
07	Stator		1	
09	Shaft end	SUS410	1	
10	Auto-cut Protector		1	
16	Motor frame	SUS304	1	
17	Lubricant			
19	Bearing bracket	FC200	1	
20A	Bearing		1	
20B	Bearing		1	
21	M.seal	CA / CE & SIC / SIC	1	
23	M. seal bracket	FC200	1	

No.	Part name	Material	QTY	Remark
25	Oil seal	NBR	1	
26	Casing	FC200	1	
27	Impeller	FC200	1	
31	Strainer	SUS304	1	
41	Handle	ABS	1	
46	Impeller key	SUS304	1	
47	Packing			



Professionalism • Innovation • Service • Commitment

A series of horizontal dotted lines spanning the width of the page, providing a template for handwritten notes or reflections.