

# AFC SERIES

## SUBMERSIBLE CUTTER PUMPS

**POWER :** 2~15HP (1.5~11kW)  
**MAX.HEAD :** 52m (171feet)  
**MAX.FLOW :** 2.1m<sup>3</sup>/min (126m<sup>3</sup>/h)



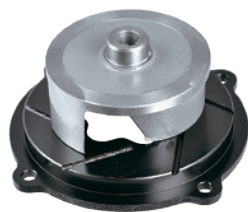
### PRODUCT NOMENCLATURE

Example : 

80	AF	C	2	1.5
Discharge mm	Type	Impeller type	Pole	kW

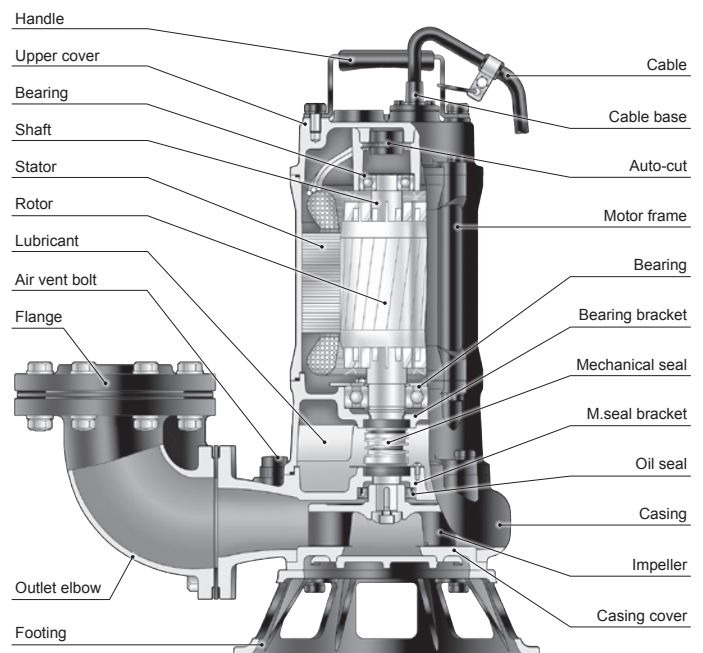
### FEATURE

- AFC cutter pumps, with a tungsten carbide edged impeller, are perfect for pumping sewage and breaking/tearing solids in sewage treatment plants.
- International standard design : Epoxy Resin Sealed cable, motor protector, dry-motor, silicon carbide mechanical seal, high grade cast iron offering highest quality and performance.
- Double Mechanical Seal: Superior abrasion resistant mechanical seal manufactured with silicon carbide to ensure the best seal effect.
- In order to make sure the highest quality of products, HCP Pump installed professional assembly lines and applied strict quality control measures during the assembly and final product release.
- C type impeller and Cutter casing cover. on the impeller vanes,shreds against the inner cutting blades to break down destructible solids into small pieces to prevent clogging in the pump. The heat hardened casing cover is designed to withstand abrasions.



### APPLICATIONS

- Drainage of waste water containing fibrous additives from leather factory, dyeing factory and food processing factory.
- Sewage management, accumulated water, septic tank, stock farm.
- Drainage of waste water from the attenuation tank, purifying tank and sewage tank in water treatment plant.



# AFC SERIES SUBMERSIBLE CUTTER PUMPS

## 80AFC21.5 · 80AFC22.2 · 80AFC23.7A

### SPECIFICATIONS

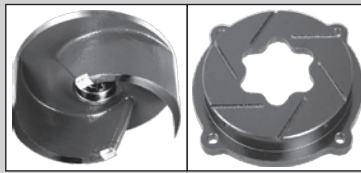
Item	Description	
Limits of Use	Liquid Temp.	0~40°C(32~104°F)
	Applications	Wastewater · Sewage
Type	Frequency	50Hz
	Motor	2P(3000rpm) · Dry Motor
	Insulation	Class F
	Protection	IP68
	Protector	Auto-cut
	Bearing	Ball type
	M.seal	Double M.seals
	Impeller	Open
Material	Upper Cover	FC200
	Motor Frame	FC200
	Shaft	SUS403
	M.seal	CA/CE & SiC/SiC
	Casing	FC200
	Impeller	FC200+Tungsten
	Casing Cover	FC200+Heat
	Footing	FCD450
	Cable	VCT or H07RN-F or SJOW/SOW
Optional	-	



80AFC21.5 · 80AFC22.2



80AFC23.7A

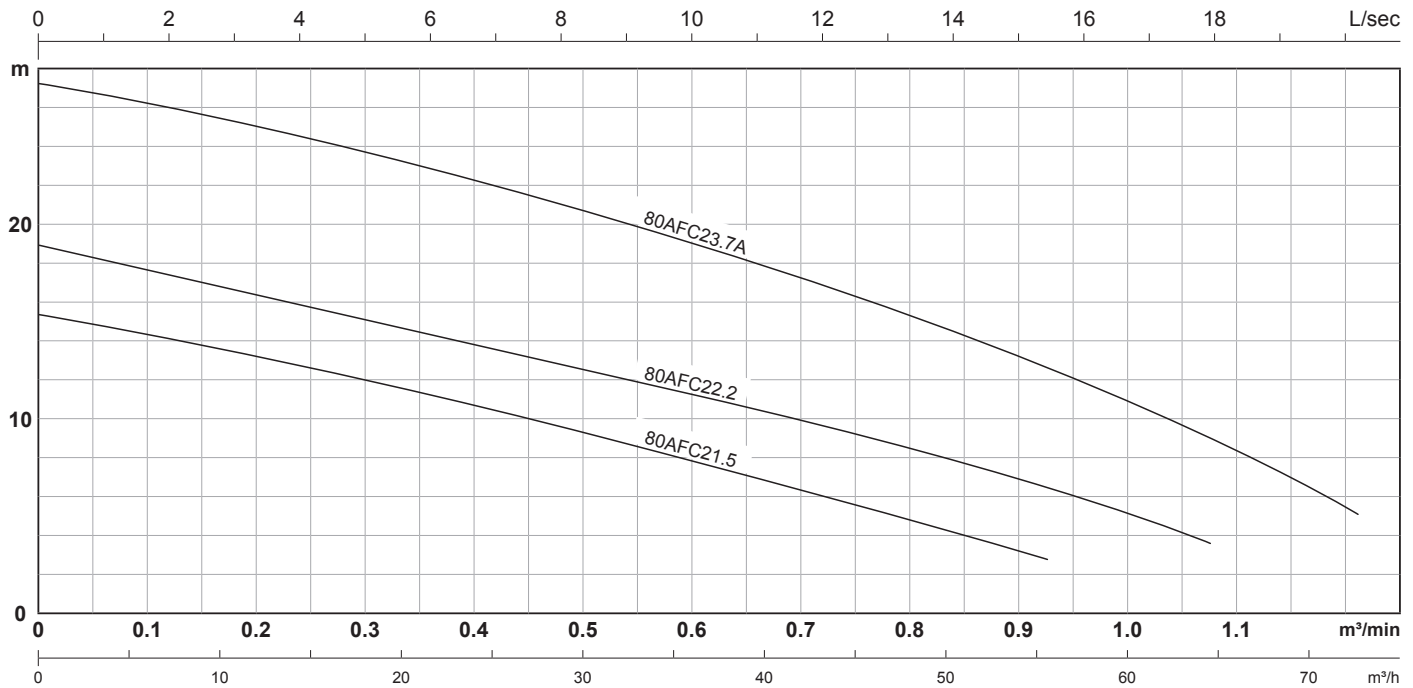


Open Impeller

Cutter casing cover

Model	Power HP(kW)	Discharge inch(mm)	Standard		MAX		Max Solid Passage mm(inch)	Weight(W/O Cable)		Phase Voltage	1Ø	1Ø	3Ø	3Ø	3Ø	3Ø	3Ø
			m-m³/min	m-m³/h	m-m³/min	m-m³/h		1Ø-kg(lbs)	3Ø-kg(lbs)		220V	230V	230V	380V	400V	415V	525V
80AFC21.5	2(1.5)	3"(80)	7.5-0.6	7.5-36	15-1.0	15.0-60	62(2 3/8")	37(82)	33(73)	Full load Ampere	10.2	10.0	6.1	3.6	3.4	3.4	2.7
80AFC22.2	3(2.2)	3"(80)	11-0.6	11-36	18.5-1.15	18.5-69	62(2 3/8")	40(88)	35(77)		15.0	14.6	8.6	5.1	5.0	4.8	3.8
80AFC23.7A	5(3.7)	3"(80)	19-0.6	19-36	27.5-1.35	27.5-81	62(2 3/8")	-	48(106)		-	-	14.0	8.2	7.8	7.7	6.2

### PERFORMANCE CURVES



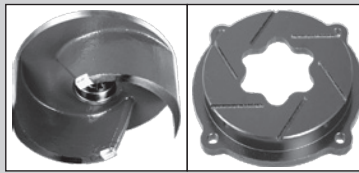
Model	Power HP(kW)	Discharge inch(mm)	Q:m³/min	0.1	0.2	0.3	0.4	0.5	0.6	0.8	1.0	Q:L/sec	2	4	6	8	10	12	16	20	
				Q:m³/h	6	12	18	24	30	36	48		60	H:m	14.1	12.7	11.2	9.6	7.8	6.0	-
80AFC21.5	2 (1.5)	3" (80)	H:m	14.3	13.2	12.0	10.7	9.3	7.8	4.8	-	H:m	14.1	12.7	11.2	9.6	7.8	6.0	-	-	
80AFC22.2	3 (2.2)	3" (80)		17.6	16.4	15.1	13.8	12.5	11.2	8.5	5.1		17.4	15.8	14.3	12.8	11.2	9.6	5.9	-	-
80AFC23.7A	5 (3.7)	3" (80)		26.9	25.1	23.7	22.2	20.9	19.0	15.3	11.0		26.0	24.5	22.9	20.9	19.0	16.9	11.9	5.4	-

# AFC SERIES SUBMERSIBLE CUTTER PUMPS

## 80(100)AFC25.5 · 80(100)AFC27.5 · 80(100)AFC211

### SPECIFICATIONS

Item	Description	
Limits of Use	Liquid Temp.	0~40°C(32~104°F)
	Applications	Wastewater · Sewage
Type	Frequency	50Hz
	Motor	2P(3000rpm) · Dry Motor
	Insulation	Class H
	Protection	IP68
	Protector	Auto-cut
	Bearing	Ball type
	M.seal	Double M.seals
	Impeller	Open
Material	Upper Cover	FC200
	Motor Frame	FC200
	Shaft	SUS403 (7.5~10HP) · SUS420J2 (15HP)
	M.seal	CA/CE & SiC/SiC
	Casing	FC200
	Impeller	FC200+Tungsten
	Casing Cover	FC200+Heat
	Footing	FCD450
	Cable	VCT or H07RN-F or SOW
Optional	-	



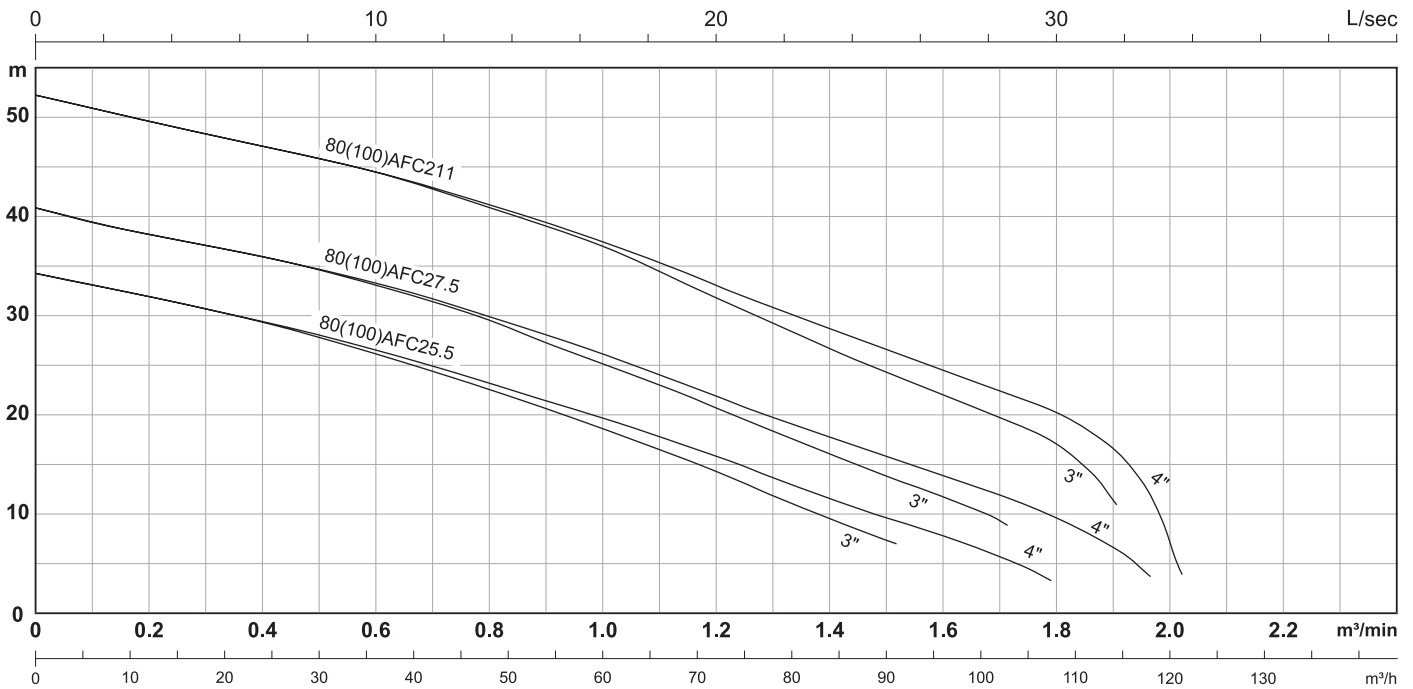
Open Impeller      Cutter casing cover



80(100)AFC25.5 · 80(100)AFC27.5  
80(100)AFC211

Model	Power HP(kW)	Discharge inch(mm)	Standard		MAX		Max Solid Passage mm(inch)	Weight(W/O Cable)		Phase Voltage	Full load Amperes						
			m-m³/min	m-m³/h	m-m³/min	m-m³/h		1Ø-kg(lbs)	3Ø-kg(lbs)		1Ø	1Ø	3Ø	3Ø	3Ø	3Ø	3Ø
80(100)AFC25.5	7.5(5.5)	3"(80)	26-0.6	26-36	34-1.55	34-93	67(2 5/8")	-	75(165)	Full load Amperes	220V	230V	230V	380V	400V	415V	525V
		4"(100)	19.5-1.0	19.5-60	34-1.8	34-108	67(2 5/8")	-	75(165)		-	-	20.6	11.7	11.4	11.4	9.1
80(100)AFC27.5	10(7.5)	3"(80)	33-0.6	33-36	40.5-1.75	40.5-105	67(2 5/8")	-	81(179)		-	-	20.6	11.7	11.4	11.4	9.1
		4"(100)	26-1.0	26-60	40.5-2.05	40.5-123	67(2 5/8")	-	81(179)		-	-	27.6	15.7	15.2	15.2	12.2
80(100)AFC211	15(11)	3"(80)	44-0.6	44-36	52-1.95	52-117	67(2 5/8")	-	91(201)		-	-	27.6	15.7	15.2	15.2	12.2
		4"(100)	37-1.0	37-60	52-2.1	52-126	67(2 5/8")	-	91(201)		-	-	39.0	22.2	21.6	21.6	-

### PERFORMANCE CURVES



Model	Power HP(kW)	Discharge inch(mm)	Q:m³/min Q:m³/h	Q:m³/min								Q:L/sec	H:m							
				0.2	0.4	0.6	0.8	1	1.2	1.6	2		4	8	12	16	20	24	28	32
80(100)AFC25.5	7.5(5.5)	3"(80)	H:m	32.0	29.4	26.1	22.6	18.6	14.4	-	-	H:m	31.5	28.2	24.0	19.6	14.4	8.7	-	
		4"(100)		32.0	29.4	26.5	23.2	19.6	15.8	7.8	-		31.5	28.4	24.6	20.4	15.8	10.8	6.2	-
80(100)AFC27.5	10(7.5)	3"(80)		38.2	36.0	33.0	29.6	25.2	20.6	11.8	-		37.8	25.0	31.0	36.1	20.8	15.2	10.0	-
		4"(100)		38.2	36.0	33.3	30.0	26.2	21.8	13.9	-		37.8	25.0	31.4	36.8	22.0	17.0	12.3	5.9
80(100)AFC211	15(11)	3"(80)		49.6	47.1	44.5	41.0	37.0	31.8	22.0	-		49.1	46.1	42.4	37.8	31.8	25.7	20.2	-
		4"(100)		49.6	47.1	44.5	41.2	37.4	33.0	24.6	7.2		49.1	46.1	42.6	38.2	33.1	28.0	22.8	15.4

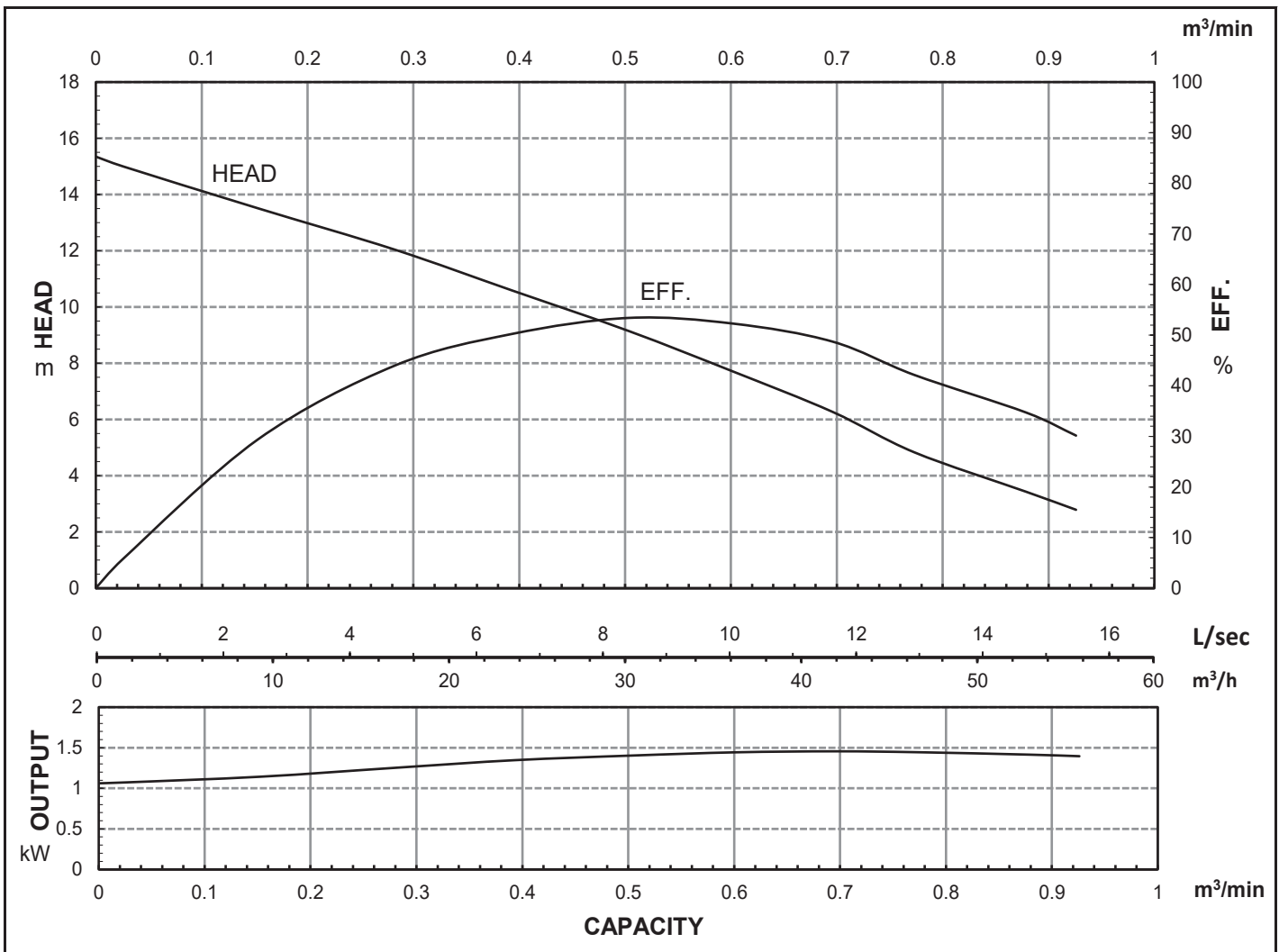


# HCP PUMP

FILE NO. PC-M-E5-80AFC21.51

## PUMP PERFORMANCE CURVES

MODEL	80AFC21.5					VER. NO. AI0710	
	STANDARD SPECIFICATION					REFERENCE SPECIFICATION	
FREQUENCY	50 Hz						
DISCHARGE	3	inch /		80	mm		
OUTPUT	2	HP /		1.5	kW		
HEAD	7.5 m						
CAPACITY	0.6 m <sup>3</sup> /min						
PHASE/VOLTAGE	1 Ø	220 V	230 V	240 V			
RATED CURRENT		10.2 A	10.0 A	9.8 A			
POLE / rpm	2 P /		2820		rpm		
START METHOD	CAPACITOR						
INSULATION CLASS	F						
REMARK							



HCP PUMP MANUFACTURER CO., LTD.

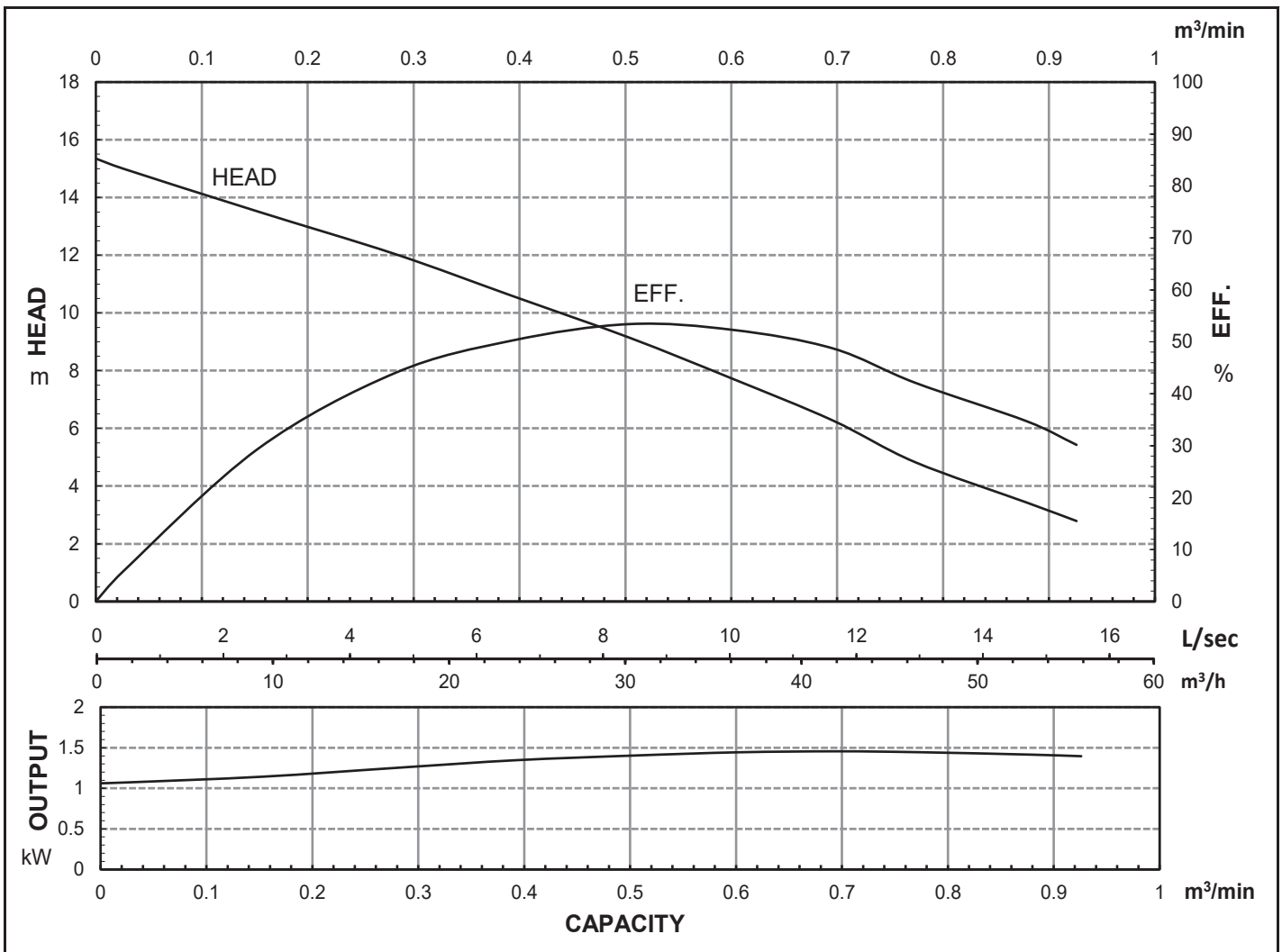


# HCP PUMP

FILE NO. PC-M-E5-80AFC21.53

## PUMP PERFORMANCE CURVES

MODEL	80AFC21.5					VER. NO. AI0710	
	STANDARD SPECIFICATION					REFERENCE SPECIFICATION	
FREQUENCY	50 Hz						
DISCHARGE	3	inch /		80	mm		
OUTPUT	2	HP /		1.5	HP	kW	
HEAD	7.5 m						
CAPACITY	0.6 m <sup>3</sup> /min						
PHASE/VOLTAGE	3 Ø	230 V	380 V	400 V	415 V	525 V	Ø V
RATED CURRENT		6.1 A	3.6 A	3.4 A	3.4 A	2.7 A	A
POLE / rpm	2 P /		2820 rpm				
START METHOD	DIRECT						
INSULATION CLASS	F						
REMARK							



HCP PUMP MANUFACTURER CO., LTD.

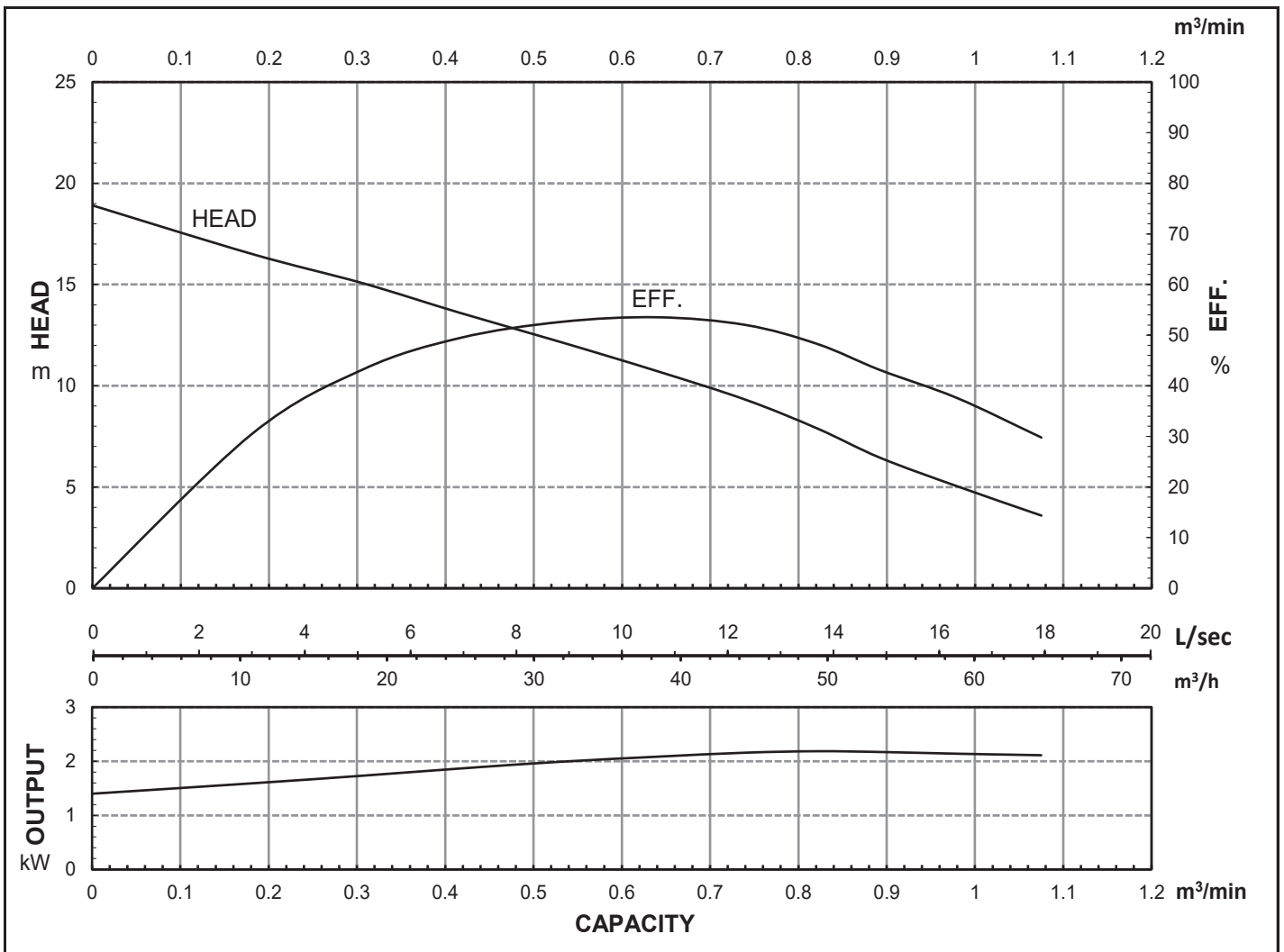


# HCP PUMP

FILE NO. PC-M-E5-80AFC22.21

## PUMP PERFORMANCE CURVES

MODEL	80AFC22.2					VER. NO. AI0710	
	STANDARD SPECIFICATION					REFERENCE SPECIFICATION	
FREQUENCY	50 Hz						
DISCHARGE	3	inch /		80	mm		
OUTPUT	3	HP /		2.2	kW		
HEAD	11 m						
CAPACITY	0.6 m <sup>3</sup> /min						
PHASE/VOLTAGE	1 ∅	220 V	230 V	240 V			
RATED CURRENT		15.0 A	14.6 A	14.4 A			
POLE / rpm	2 P /		2840 rpm				
START METHOD	CAPACITOR						
INSULATION CLASS	F						
REMARK							



HCP PUMP MANUFACTURER CO., LTD.

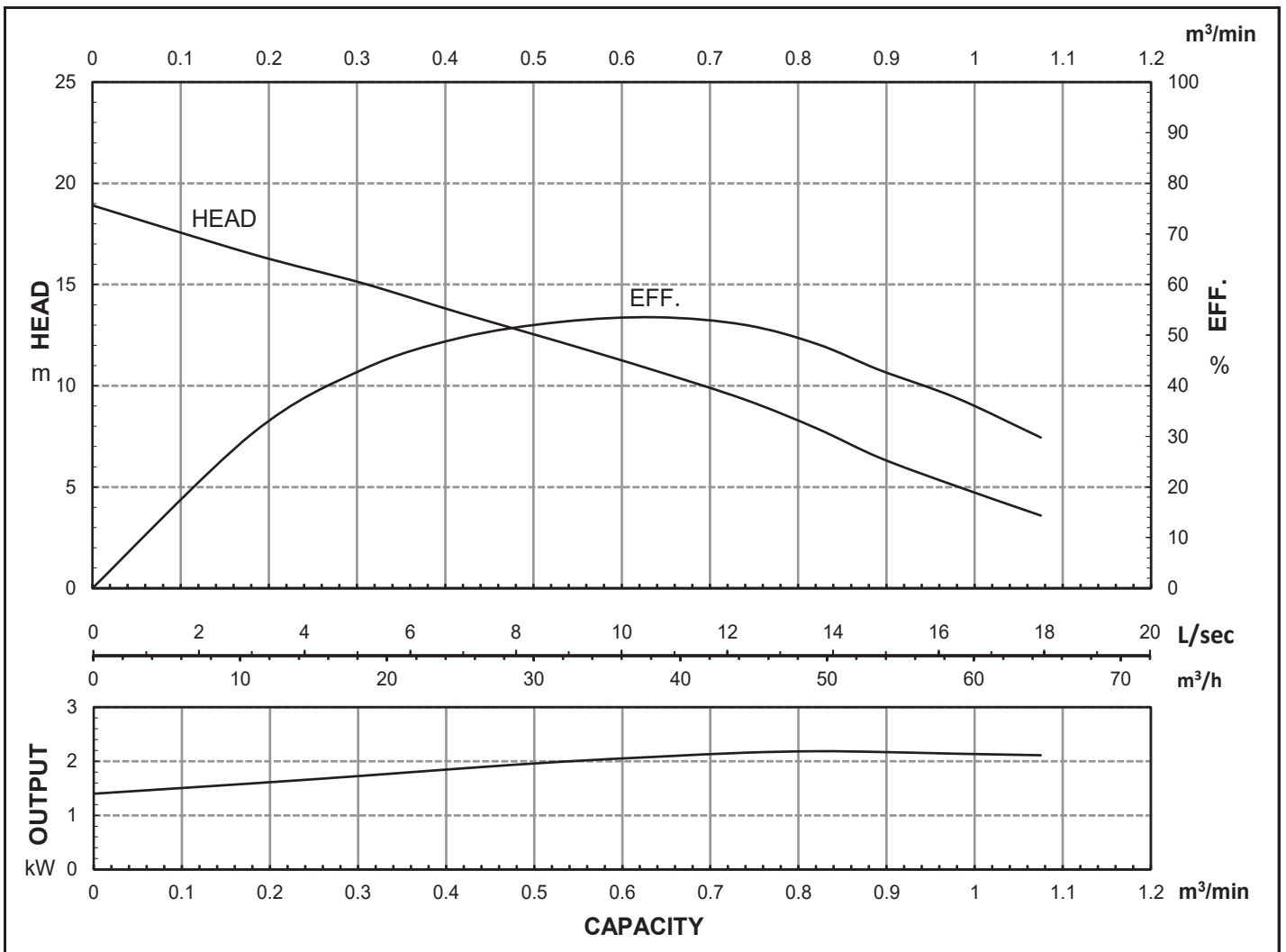


# HCP PUMP

FILE NO. PC-M-E5-80AFC22.23

## PUMP PERFORMANCE CURVES

MODEL	80AFC22.2					VER. NO. AI0710	
	STANDARD SPECIFICATION					REFERENCE SPECIFICATION	
FREQUENCY	50 Hz						
DISCHARGE	3	inch /		80	mm		
OUTPUT	3	HP /		2.2	kW		
HEAD	11 m						
CAPACITY	0.6 m <sup>3</sup> /min						
PHASE/VOLTAGE	3 Ø	230 V	380 V	400 V	415 V	525 V	Ø V
RATED CURRENT		8.6 A	5.1 A	5.0 A	4.8 A	3.8 A	A
POLE / rpm	2 P /		2840 rpm				
START METHOD	DIRECT						
INSULATION CLASS	F						
REMARK							



HCP PUMP MANUFACTURER CO., LTD.



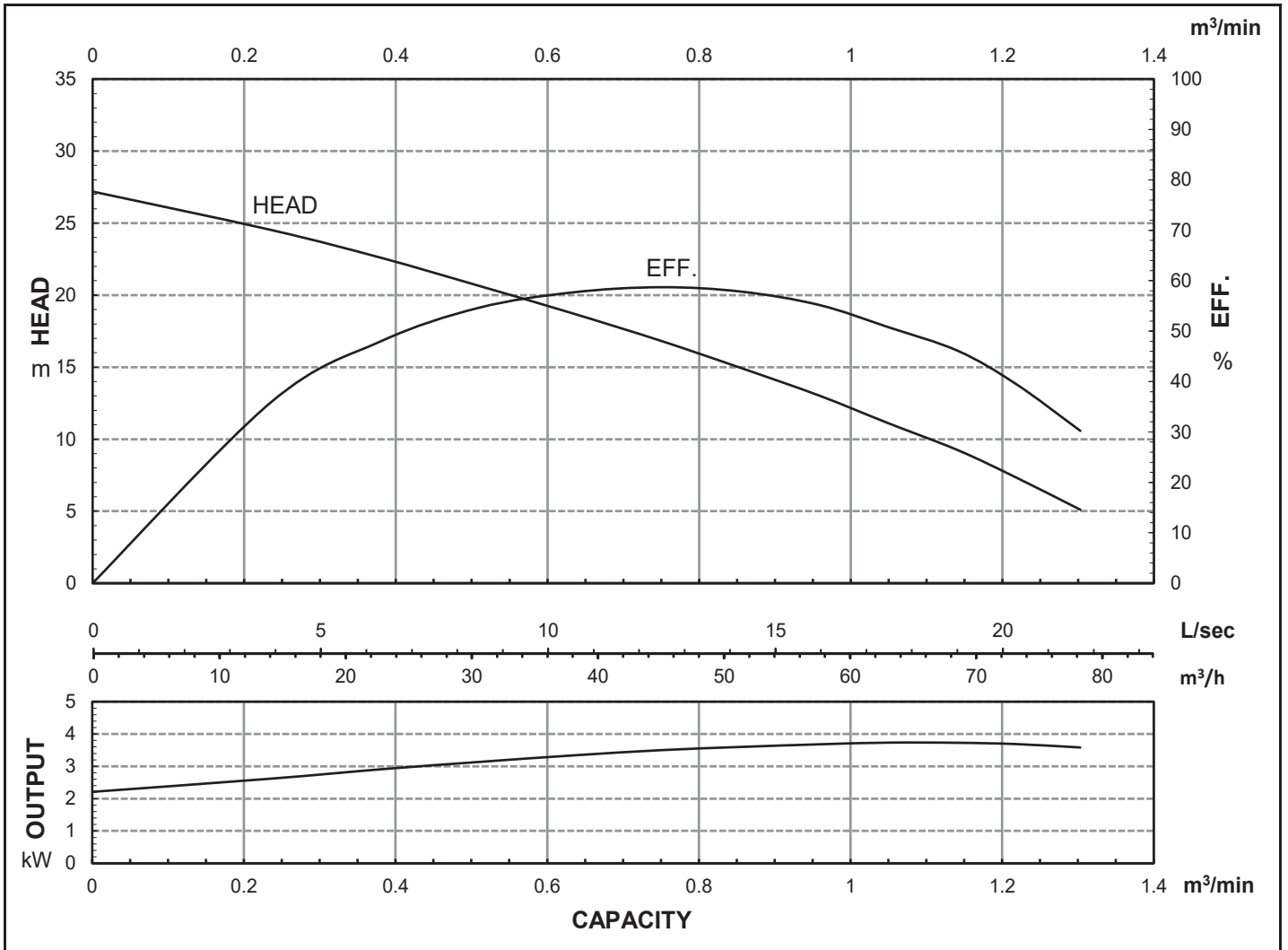


# HCP PUMP

FILE NO. PC-M-E5-80AFC23.7A3

## PUMP PERFORMANCE CURVES

MODEL	80AFC23.7A					VER. NO. AI0710	
	STANDARD SPECIFICATION					REFERENCE SPECIFICATION	
FREQUENCY	50 Hz						
DISCHARGE	3	inch /		80	mm		
OUTPUT	5	HP /		3.7	HP	kW	
HEAD	19 m						
CAPACITY	0.6 m <sup>3</sup> /min						
PHASE/VOLTAGE	3 Ø	230 V	380 V	400 V	415 V	525 V	Ø V
RATED CURRENT		14.0 A	8.2 A	7.8 A	7.7 A	6.2 A	A
POLE / rpm	2 P /		2850 rpm				
START METHOD	DIRECT						
INSULATION CLASS	F						
REMARK							



HCP PUMP MANUFACTURER CO., LTD.



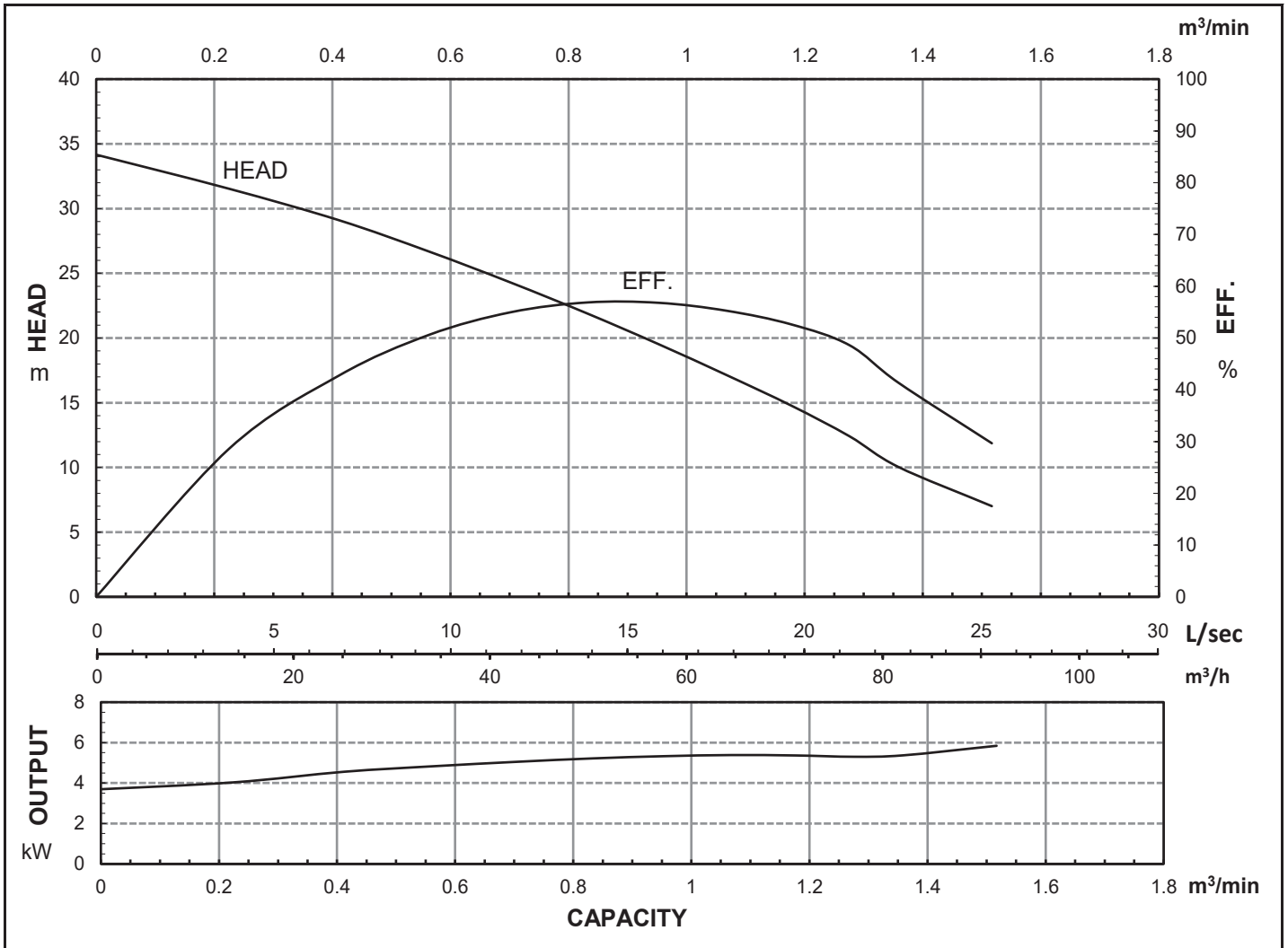


# HCP PUMP

FILE NO. PC-M-E5-80(100)AFC25.53

## PUMP PERFORMANCE CURVES

MODEL	80(100)AFC25.5					VER. NO. AI0925	
	STANDARD SPECIFICATION					REFERENCE SPECIFICATION	
FREQUENCY	50 Hz						
DISCHARGE	3	inch /		80	mm		
OUTPUT	7.5	HP /		5.5	HP	kW	
HEAD	26 m						
CAPACITY	0.6 m <sup>3</sup> /min						
PHASE/VOLTAGE	3 Ø	230 V	380 V	400 V	415 V	525 V	Ø V
RATED CURRENT		20.6 A	11.7 A	11.4 A	11.4 A	9.1 A	A
POLE / rpm	2 P /		2890 rpm				
START METHOD	DIRECT						
INSULATION CLASS	H						
REMARK							



HCP PUMP MANUFACTURER CO., LTD.

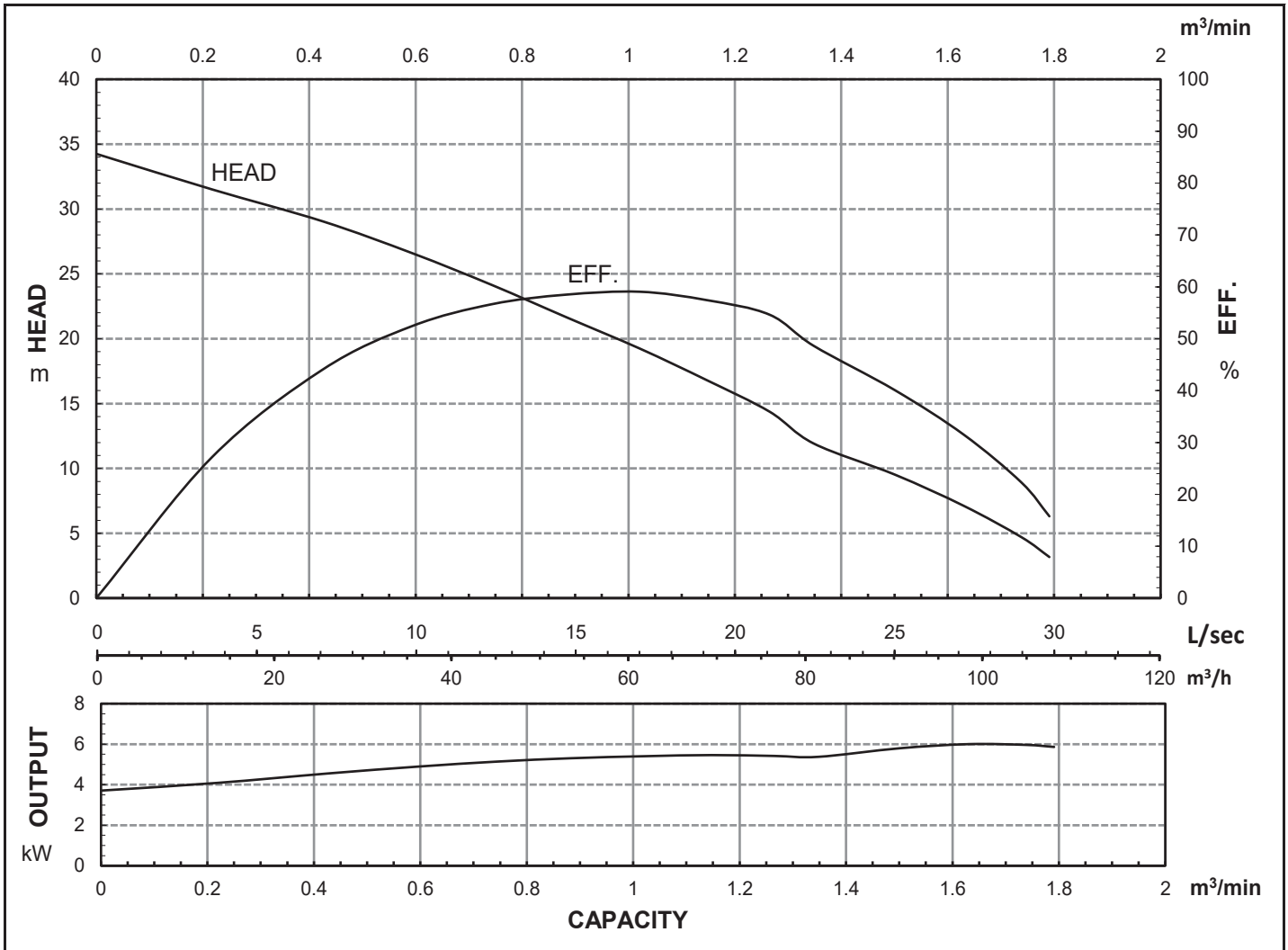


# HCP PUMP

FILE NO. PC-M-E5-80(100)AFC25.53

## PUMP PERFORMANCE CURVES

MODEL	80(100)AFC25.5					VER. NO. AI0925	
	STANDARD SPECIFICATION					REFERENCE SPECIFICATION	
FREQUENCY	50 Hz						
DISCHARGE	4	inch /			100	mm	
OUTPUT	7.5	HP /			5.5	HP	kW
HEAD	19.5 m						
CAPACITY	1 m <sup>3</sup> /min						
PHASE/VOLTAGE	3 Ø	230 V	380 V	400 V	415 V	525 V	Ø V
RATED CURRENT		20.6 A	11.7 A	11.4 A	11.4 A	9.1 A	A
POLE / rpm	2	P /			2890	rpm	
START METHOD	DIRECT						
INSULATION CLASS	H						
REMARK							



HCP PUMP MANUFACTURER CO., LTD.

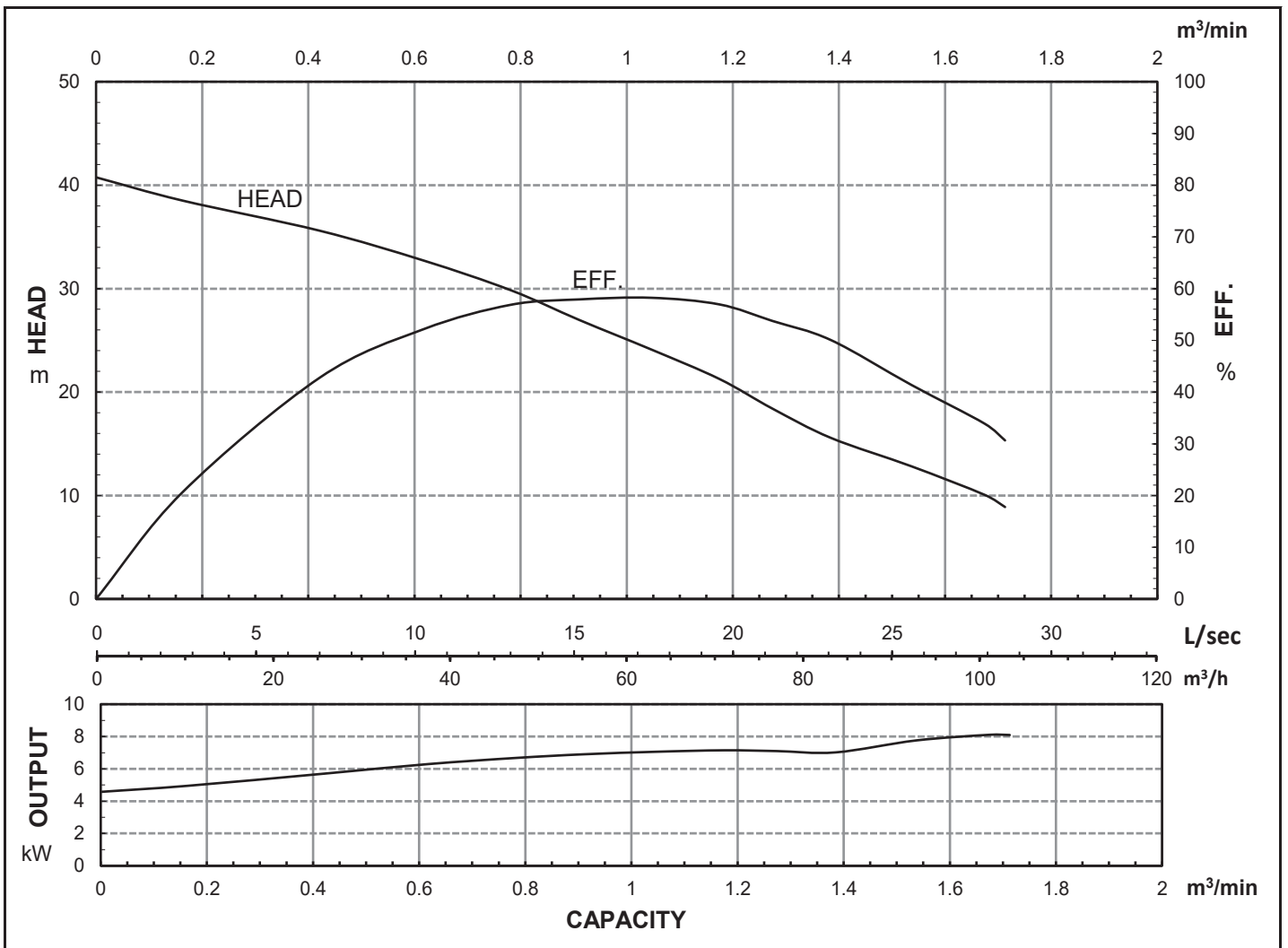


# HCP PUMP

FILE NO. PC-M-E5-80(100)AFC27.53

## PUMP PERFORMANCE CURVES

MODEL	80(100)AFC27.5					VER. NO. AI0925	
	STANDARD SPECIFICATION					REFERENCE SPECIFICATION	
FREQUENCY	50 Hz						
DISCHARGE	3	inch /		80	mm		
OUTPUT	10	HP /		7.5	HP	kW	
HEAD	33 m						
CAPACITY	0.6 m <sup>3</sup> /min						
PHASE/VOLTAGE	3 Ø	230 V	380 V	400 V	415 V	525 V	Ø V
RATED CURRENT		27.6 A	15.7 A	15.2 A	15.2 A	12.2 A	A
POLE / rpm	2	P /		2900	rpm		
START METHOD	DIRECT						
INSULATION CLASS	H						
REMARK							



HCP PUMP MANUFACTURER CO., LTD.

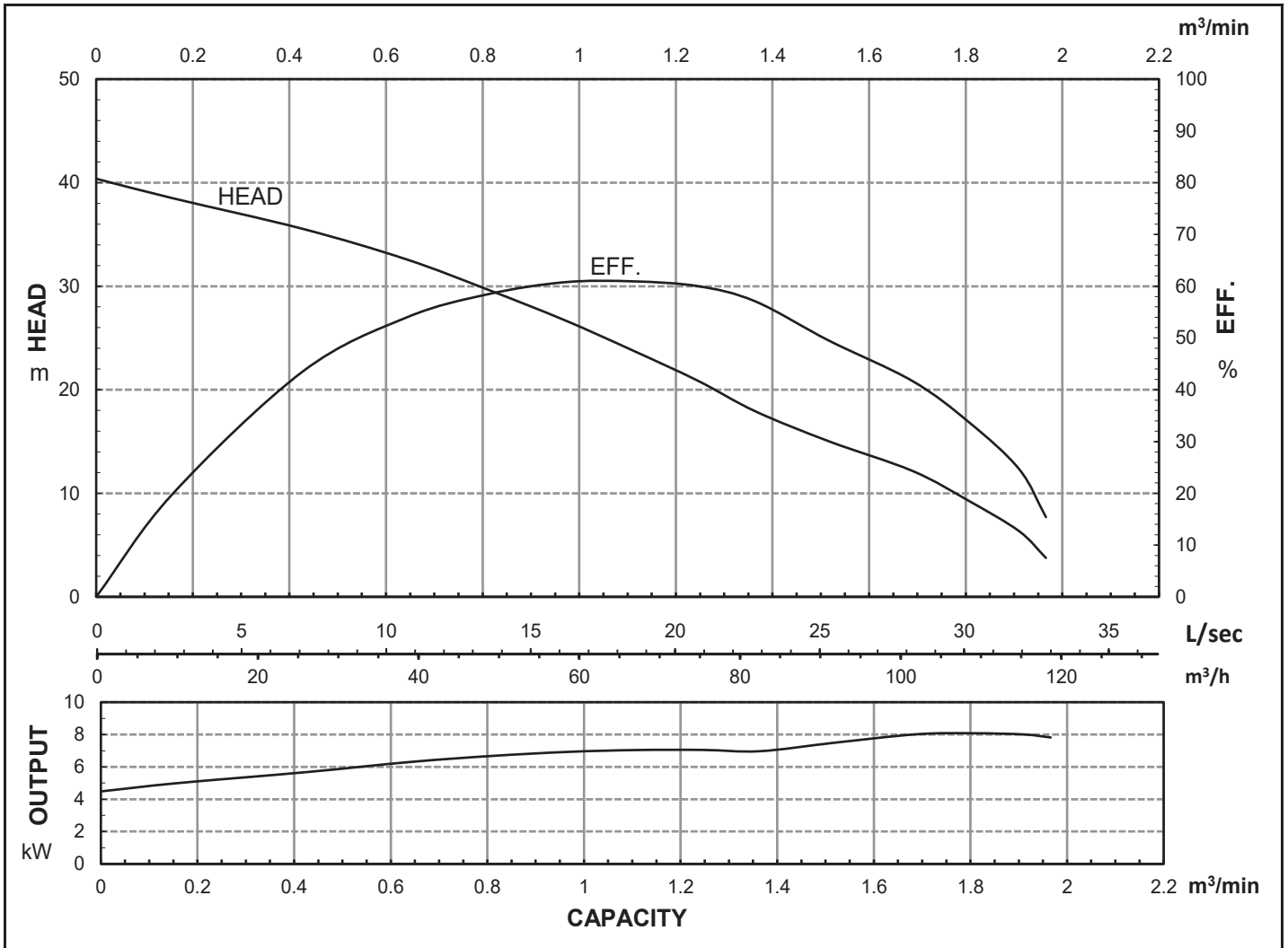


# HCP PUMP

FILE NO. PC-M-E5-80(100)AFC27.53

## PUMP PERFORMANCE CURVES

MODEL	80(100)AFC27.5					VER. NO. AI0925	
	STANDARD SPECIFICATION					REFERENCE SPECIFICATION	
FREQUENCY	50 Hz						
DISCHARGE	4	inch	/	100	mm		
OUTPUT	10	HP	/	7.5	kW	HP	kW
HEAD	26 m						
CAPACITY	1 m <sup>3</sup> /min						
PHASE/VOLTAGE	3 Ø	230 V	380 V	400 V	415 V	525 V	Ø V
RATED CURRENT		27.6 A	15.7 A	15.2 A	15.2 A	12.2 A	A
POLE / rpm	2	P	/	2900	rpm		
START METHOD	DIRECT						
INSULATION CLASS	H						
REMARK							



HCP PUMP MANUFACTURER CO., LTD.

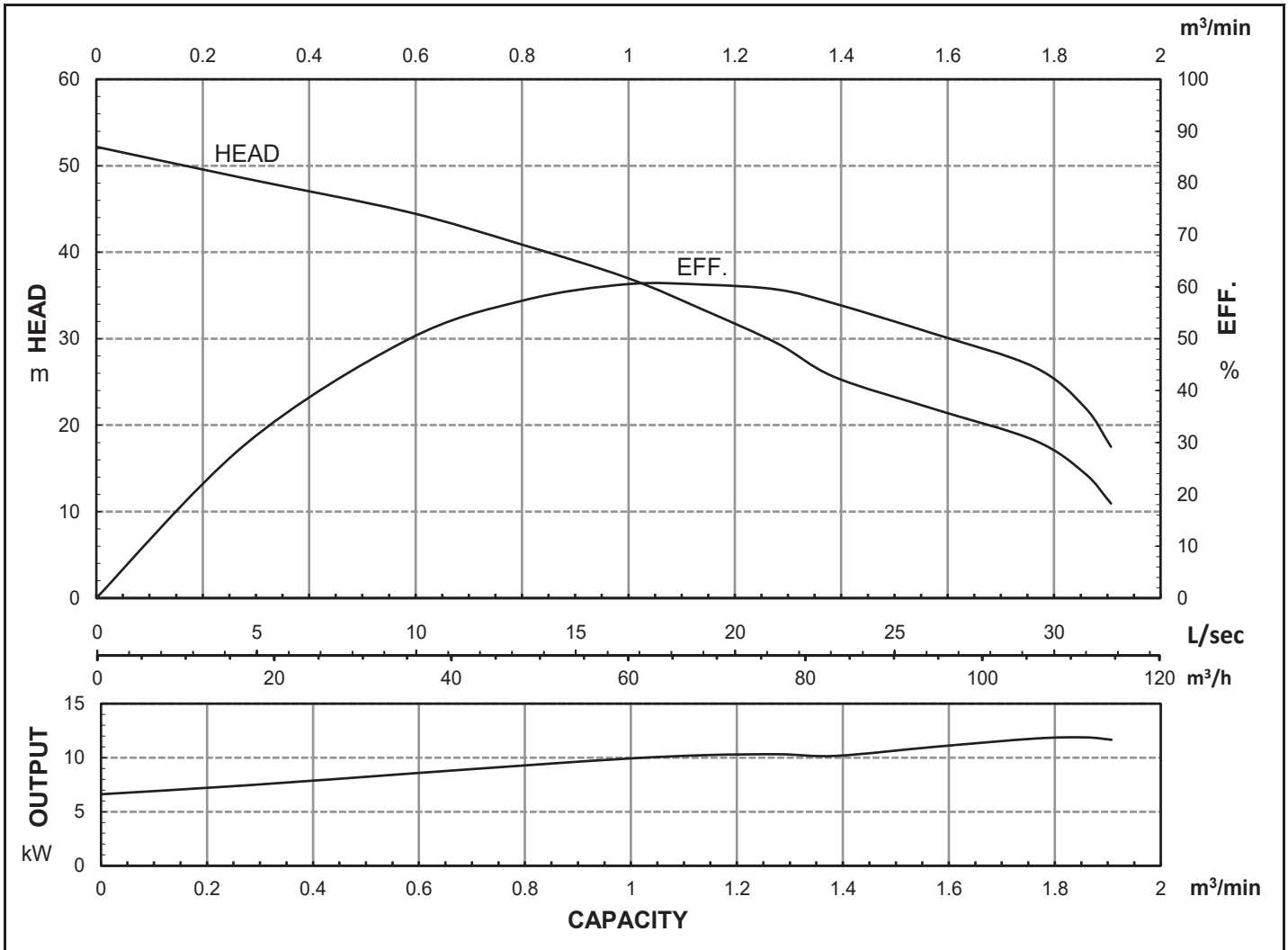


# HCP PUMP

FILE NO. PC-M-E5-80(100)AFC2113

## PUMP PERFORMANCE CURVES

MODEL	80(100)AFC211					VER. NO. AI0710	
	STANDARD SPECIFICATION					REFERENCE SPECIFICATION	
FREQUENCY	50 Hz						
DISCHARGE	3	inch /		80	mm		
OUTPUT	15	HP /		11	HP	kW	
HEAD	44 m						
CAPACITY	0.6 m <sup>3</sup> /min						
PHASE/VOLTAGE	3 Ø	230 V	380 V	400 V	415 V	Ø	V
RATED CURRENT		39.0 A	22.2 A	21.6 A	21.6 A		A
POLE / rpm	2	P /		2900	rpm		
START METHOD	DIRECT						
INSULATION CLASS	H						
REMARK							



HCP PUMP MANUFACTURER CO., LTD.

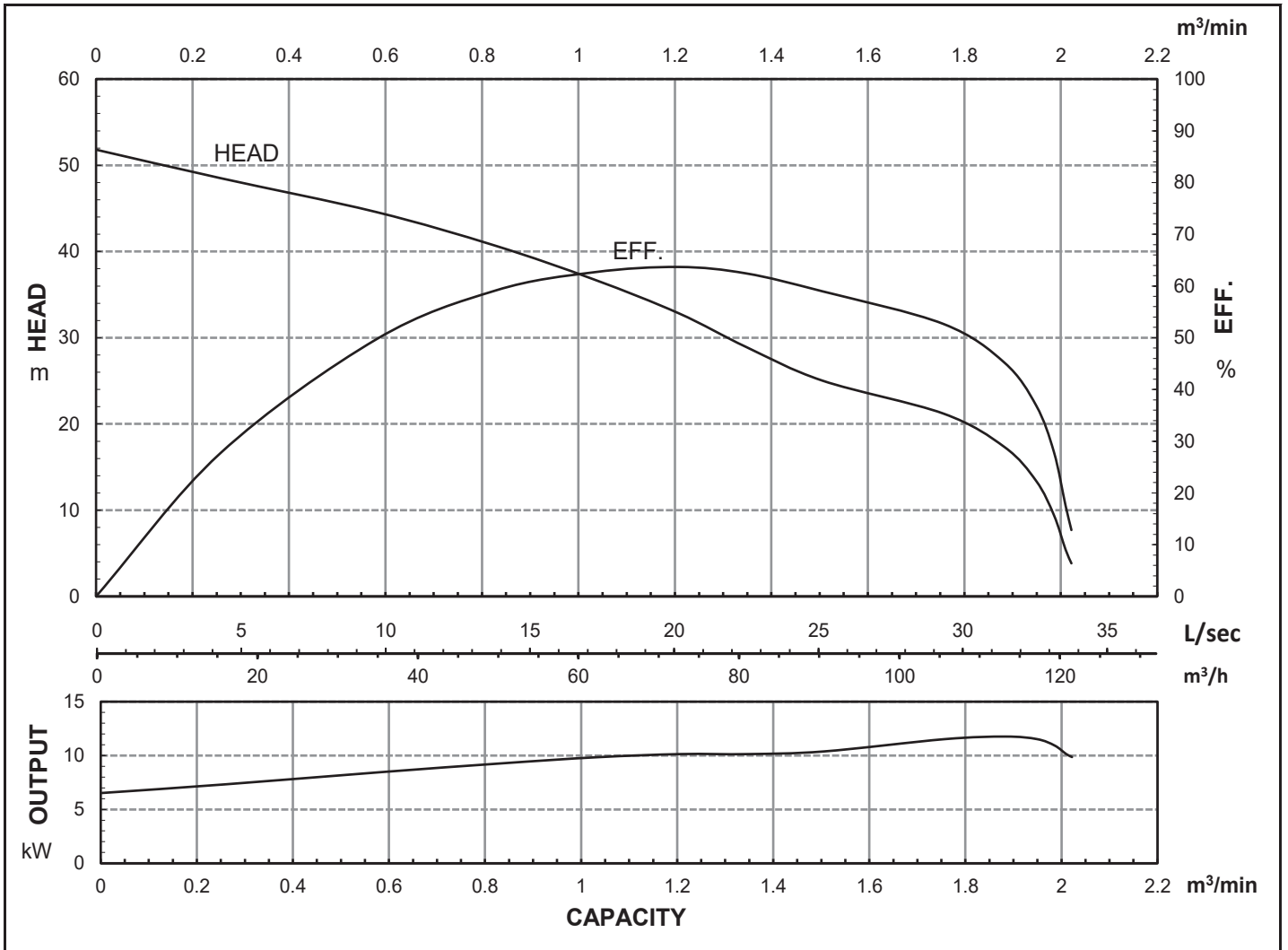


# HCP PUMP

FILE NO. PC-M-E5-80(100)AFC2113

## PUMP PERFORMANCE CURVES

MODEL	80(100)AFC211					VER. NO. AI0710	
	STANDARD SPECIFICATION					REFERENCE SPECIFICATION	
FREQUENCY	50 Hz						
DISCHARGE	4	inch /			100	mm	
OUTPUT	15	HP /			11	HP	kW
HEAD	37 m						
CAPACITY	1 m <sup>3</sup> /min						
PHASE/VOLTAGE	3 Ø	230 V	380 V	400 V	415 V	Ø	V
RATED CURRENT		39.0 A	22.2 A	21.6 A	21.6 A		A
POLE / rpm	2	P /			2900	rpm	
START METHOD	DIRECT						
INSULATION CLASS	H						
REMARK							



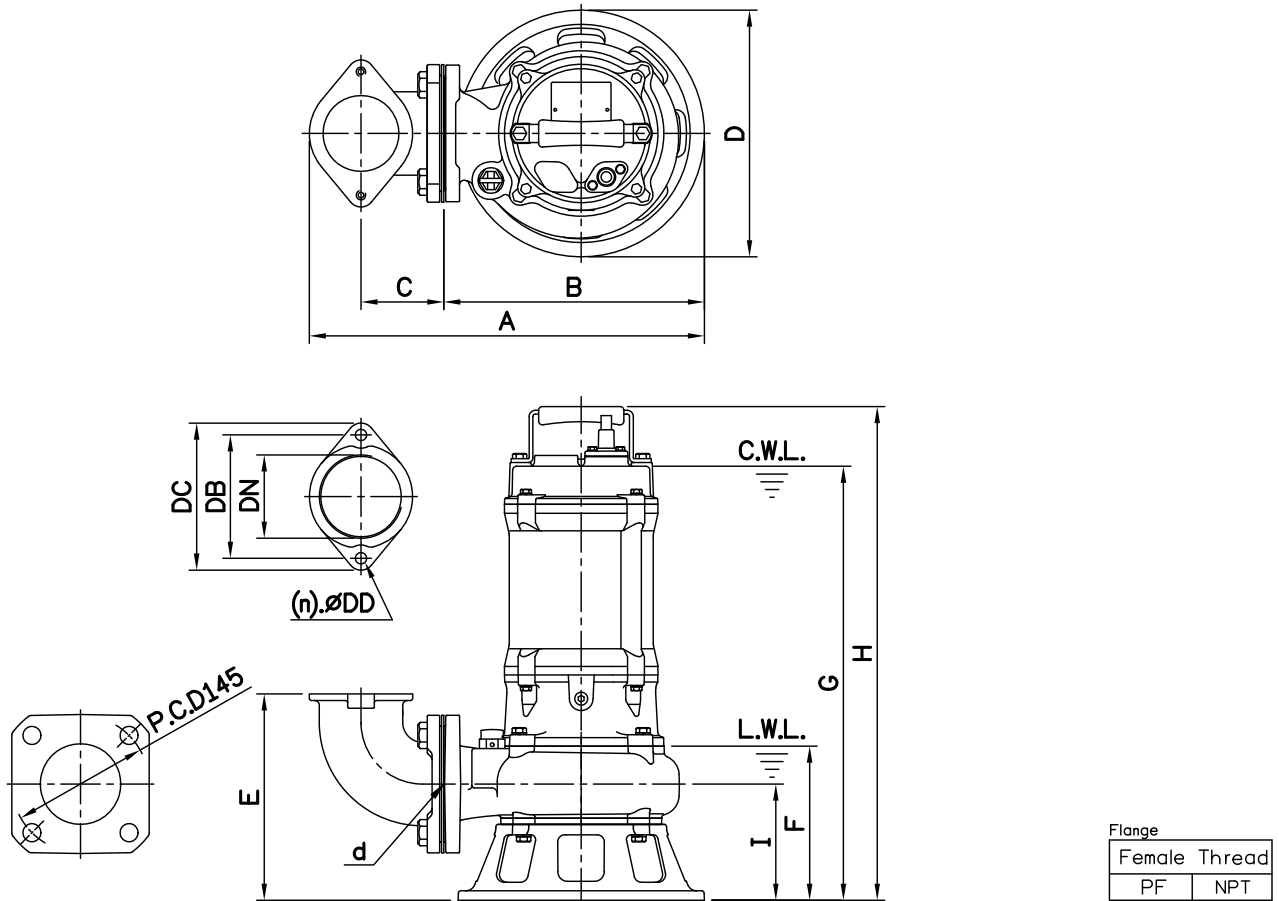
HCP PUMP MANUFACTURER CO., LTD.

## DIMENSIONS

NO: S3AFC222032-00

MODEL: 80AFC21.5 / 22.2

1Ø / 3Ø



Dimensions—mm

Weight:kg

Model	d	A	B	C	D	E	F	G	H	I	WT1	Elbow (Flange)Set	DN	DB	DC	DD	(n)QTY	WT2
80AFC21.5 1Ø	80	417	275	88	260	218	163	513	576	123	37	EB3-130	80	130	155	12	2	5
80AFC21.5 3Ø	80	417	275	88	260	218	163	458	521	123	33	EB3-130	80	130	155	12	2	5
80AFC22.2 1Ø	80	417	275	88	260	218	163	540	603	123	40	EB3-130	80	130	155	12	2	5
80AFC22.2 3Ø	80	417	275	88	260	218	163	458	521	123	35	EB3-130	80	130	155	12	2	5

Dimensions—inch

Weight:lb

Model	d	A	B	C	D	E	F	G	H	I	WT1	Elbow (Flange)Set	DN	DB	DC	DD	(n)QTY	WT2
80AFC21.5 1Ø	3	16 <sup>7</sup> / <sub>16</sub>	10 <sup>3</sup> / <sub>16</sub>	3 <sup>1</sup> / <sub>16</sub>	10 <sup>1</sup> / <sub>4</sub>	8 <sup>9</sup> / <sub>16</sub>	6 <sup>7</sup> / <sub>16</sub>	20 <sup>3</sup> / <sub>16</sub>	22 <sup>3</sup> / <sub>16</sub>	4 <sup>9</sup> / <sub>16</sub>	82	EB3-130	3	5 <sup>1</sup> / <sub>8</sub>	6 <sup>1</sup> / <sub>8</sub>	1/2	2	11
80AFC21.5 3Ø	3	16 <sup>7</sup> / <sub>16</sub>	10 <sup>3</sup> / <sub>16</sub>	3 <sup>1</sup> / <sub>16</sub>	10 <sup>1</sup> / <sub>4</sub>	8 <sup>9</sup> / <sub>16</sub>	6 <sup>7</sup> / <sub>16</sub>	18 <sup>1</sup> / <sub>16</sub>	20 <sup>3</sup> / <sub>16</sub>	4 <sup>13</sup> / <sub>16</sub>	73	EB3-130	3	5 <sup>1</sup> / <sub>8</sub>	6 <sup>1</sup> / <sub>8</sub>	1/2	2	11
80AFC22.2 1Ø	3	16 <sup>7</sup> / <sub>16</sub>	10 <sup>3</sup> / <sub>16</sub>	3 <sup>1</sup> / <sub>16</sub>	10 <sup>1</sup> / <sub>4</sub>	8 <sup>9</sup> / <sub>16</sub>	6 <sup>7</sup> / <sub>16</sub>	21 <sup>1</sup> / <sub>4</sub>	23 <sup>3</sup> / <sub>4</sub>	4 <sup>13</sup> / <sub>16</sub>	88	EB3-130	3	5 <sup>1</sup> / <sub>8</sub>	6 <sup>1</sup> / <sub>8</sub>	1/2	2	11
80AFC22.2 3Ø	3	16 <sup>7</sup> / <sub>16</sub>	10 <sup>3</sup> / <sub>16</sub>	3 <sup>1</sup> / <sub>16</sub>	10 <sup>1</sup> / <sub>4</sub>	8 <sup>9</sup> / <sub>16</sub>	6 <sup>7</sup> / <sub>16</sub>	18 <sup>1</sup> / <sub>16</sub>	20 <sup>3</sup> / <sub>16</sub>	4 <sup>13</sup> / <sub>16</sub>	77	EB3-130	3	5 <sup>1</sup> / <sub>8</sub>	6 <sup>1</sup> / <sub>8</sub>	1/2	2	11

C.W.L.:Continuous Running Water Level  
L.W.L.:Lowest Running Water Level

WT1:Pump Weight(Without Cable)  
WT2:Elbow Set Weight

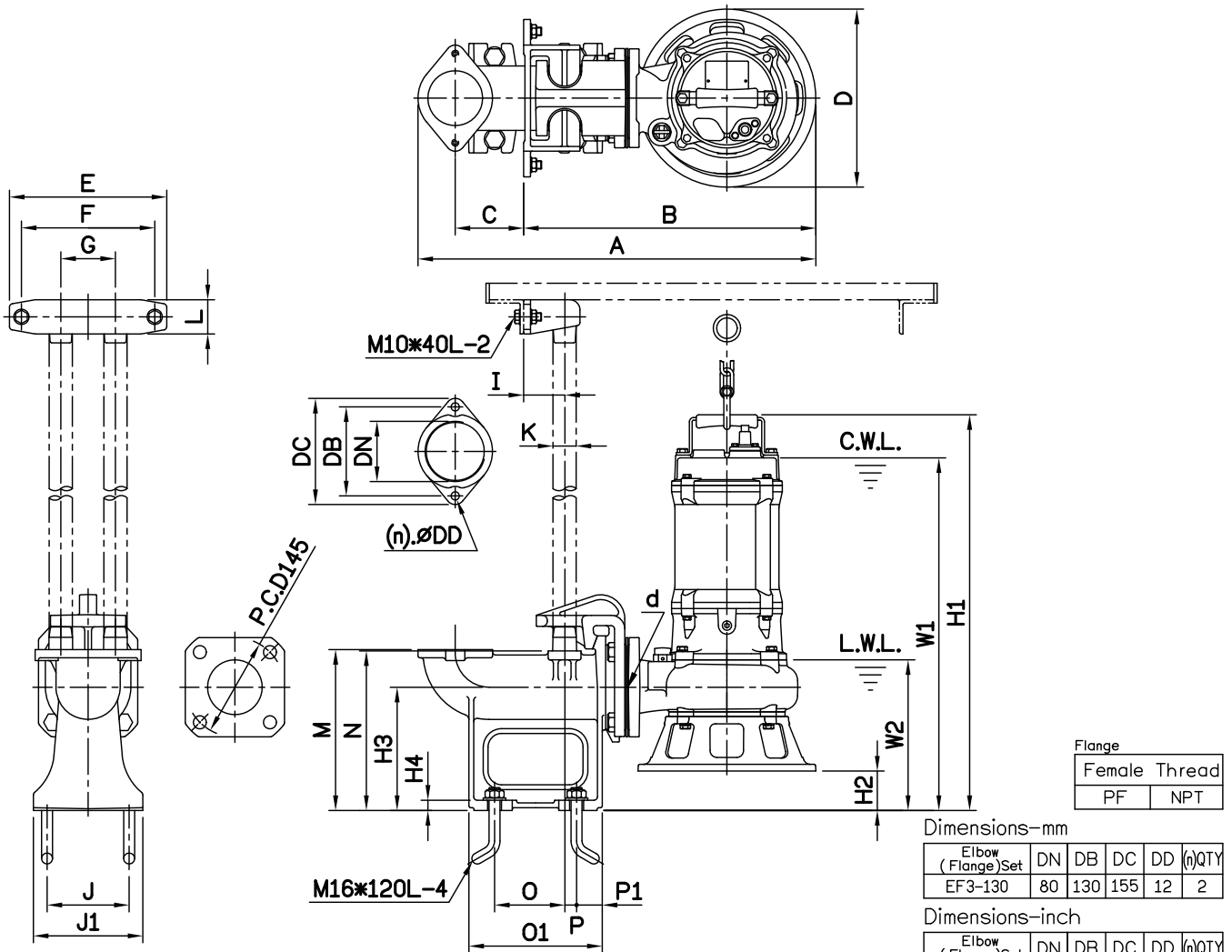


## DIMENSIONS

NO: T3AFC222032-00

MODEL: 80AFC21.5 / 22.2

1Ø / 3Ø



Flange	
Female Thread	
PF	NPT

Dimensions-mm

Elbow (Flange)Set	DN	DB	DC	DD	(n)QTY
EF3-130	80	130	155	12	2

Dimensions-inch

Elbow (Flange)Set	DN	DB	DC	DD	(n)QTY
EF3-130	3	5 1/8	6 1/8	1/2	2

Dimensions-mm

Model	d	A	B	C	D	E	F	G	I	J	J1	K	L	M	N	O	O1	P	P1	W1	W2	H1	H2	H3	H4	WT1	GRS Set	WT2
80AFC21.5 1Ø	80	582	427	100	260	230	195	80	60	120	160	1 1/4"	50	235	233	103	195	18	38	597	220	660	57	180	15	37	T2-80	20
80AFC22.2 1Ø	80	582	427	100	260	230	195	80	60	120	160	1 1/4"	50	235	233	103	195	18	38	570	220	633	57	180	15	40	T2-80	20
80AFC21.5 3Ø	80	582	428	100	260	230	195	80	60	120	160	1 1/4"	50	235	233	103	195	18	38	515	220	578	57	180	15	33	T2-80	20
80AFC22.2 3Ø	80	582	428	100	260	230	195	80	60	120	160	1 1/4"	50	235	233	103	195	18	38	515	220	578	57	180	15	35	T2-80	20

Weight:kg

Dimensions-inch

Model	d	A	B	C	D	E	F	G	I	J	J1	K	L	M	N	O	O1	P	P1	W1	W2	H1	H2	H3	H4	WT1	GRS Set	WT2
80AFC21.5 1Ø	3	22 5/8	16 3/8	3 15/16	10 1/4	9 1/8	7 1/8	3 1/8	2 3/8	4 3/4	6 5/8	1 1/4	1 1/8	9 1/4	9 3/8	4 1/8	7 1/8	1 1/8	1 1/2	23 1/2	8 1/8	26	2 1/4	7 1/8	5/8	82	T2-80	43
80AFC22.2 1Ø	3	22 5/8	16 3/8	3 15/16	10 1/4	9 1/8	7 1/8	3 1/8	2 3/8	4 3/4	6 5/8	1 1/4	1 1/8	9 1/4	9 3/8	4 1/8	7 1/8	1 1/8	1 1/2	22 7/8	8 1/8	24 3/8	2 1/4	7 1/8	5/8	88	T2-80	43
80AFC21.5 3Ø	3	22 5/8	16 3/8	3 15/16	10 1/4	9 1/8	7 1/8	3 1/8	2 3/8	4 3/4	6 5/8	1 1/4	2	9 1/4	9 3/8	4 1/8	7 1/8	1 1/8	1 1/2	20 1/4	8 1/8	22 3/4	2 1/4	7 1/8	5/8	73	T2-80	43
80AFC22.2 3Ø	3	22 5/8	16 3/8	3 15/16	10 1/4	9 1/8	7 1/8	3 1/8	2 3/8	4 3/4	6 5/8	1 1/4	2	9 1/4	9 3/8	4 1/8	7 1/8	1 1/8	1 1/2	20 1/4	8 1/8	22 3/4	2 1/4	7 1/8	5/8	77	T2-80	43

Weight:lb

C.W.L.:Continuous Running Water Level  
L.W.L.:Lowest Running Water Level

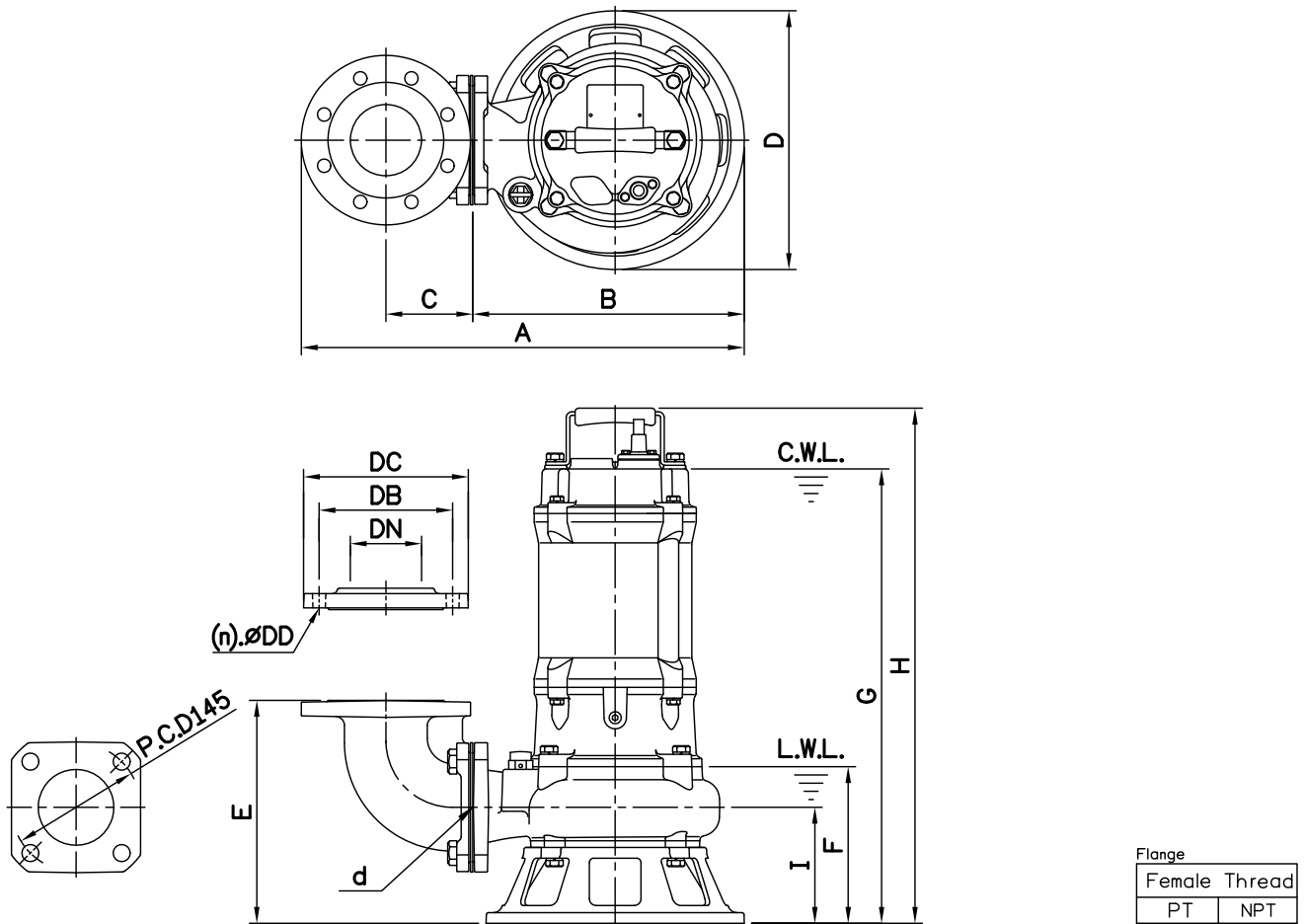
WT1:Pump Weight(Without Cable)  
WT2:GRS Set Weight

**DIMENSIONS**

**NO: S3AFC237A32-00**

**MODEL: 80AFC23.7A**

**3Ø**



Dimensions-mm

Weight:kg

Model	d	A	B	C	D	E	F	G	H	I	WT1	Elbow (Flange)Set	DN	DB	DC	DD	(n)QTY	WT2
80AFC23.7A	80	498	305	98	290	250	176	510	578	130	48	EB3-150A	80	150	190	15	8	12

Dimensions-inch

Weight:lb

Model	d	A	B	C	D	E	F	G	H	I	WT1	Elbow (Flange)Set	DN	DB	DC	DD	(n)QTY	WT2
80AFC23.7A	3	19 <sup>7</sup> / <sub>8</sub>	12	3 <sup>7</sup> / <sub>8</sub>	11 <sup>1</sup> / <sub>8</sub>	9 <sup>3</sup> / <sub>8</sub>	6 <sup>1</sup> / <sub>8</sub>	20 <sup>1</sup> / <sub>8</sub>	22 <sup>3</sup> / <sub>4</sub>	5 <sup>1</sup> / <sub>8</sub>	106	EB3-150A	3	5 <sup>7</sup> / <sub>8</sub>	7 <sup>1</sup> / <sub>2</sub>	3 <sup>1</sup> / <sub>8</sub>	8	26

C.W.L.:Continuous Running Water Level  
L.W.L.:Lowest Running Water Level

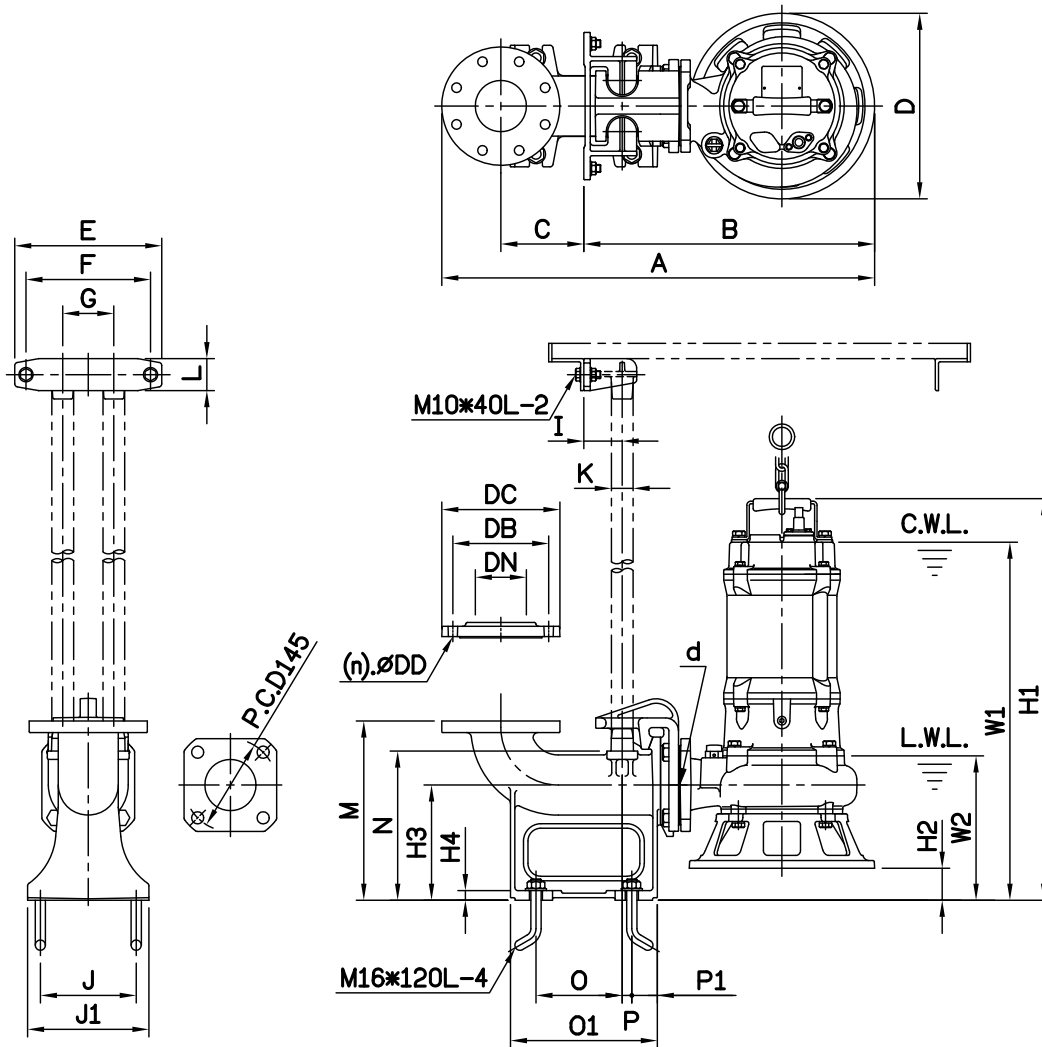
WT1:Pump Weight(Without Cable)  
WT2:Elbow Set Weight

## DIMENSIONS

NO: T3AFC237A32-00

MODEL: 80AFC23.7A

3Ø



Flange	
Female Thread	
PT	NPT

Dimensions-mm

Elbow (Flange)Set	DN	DB	DC	DD	(n)QTY
EF3-150	80	150	185	15	8

Dimensions-inch

Elbow (Flange)Set	DN	DB	DC	DD	(n)QTY
EF3-150	3	5 <sup>15</sup> / <sub>16</sub>	7 <sup>5</sup> / <sub>16</sub>	<sup>9</sup> / <sub>16</sub>	8

Dimensions-mm

Model	d	A	B	C	D	E	F	G	I	J	J1	K	L	M	N	O	O1	P	P1	W1	W2	H1	H2	H3	H4	WT1	Weight:kg	
																											GRS Set	WT2
80AFC23.7A	80	680	458	130	290	230	195	80	60	150	190	1 <sup>1</sup> / <sub>4</sub> "	50	280	233	135	230	15	40	560	225	628	50	180	15	48	T80D	27

Dimensions-inch

Model	d	A	B	C	D	E	F	G	I	J	J1	K	L	M	N	O	O1	P	P1	W1	W2	H1	H2	H3	H4	WT1	Weight:lb	
																											GRS Set	WT2
80AFC23.7A	3	26 <sup>3</sup> / <sub>4</sub>	18 <sup>1</sup> / <sub>16</sub>	5 <sup>1</sup> / <sub>16</sub>	11 <sup>1</sup> / <sub>16</sub>	9 <sup>1</sup> / <sub>16</sub>	7 <sup>1</sup> / <sub>16</sub>	3 <sup>1</sup> / <sub>8</sub>	2 <sup>3</sup> / <sub>8</sub>	5 <sup>15</sup> / <sub>16</sub>	7 <sup>1</sup> / <sub>2</sub>	1 <sup>1</sup> / <sub>4</sub>	1 <sup>15</sup> / <sub>16</sub>	11	9 <sup>3</sup> / <sub>16</sub>	5 <sup>5</sup> / <sub>16</sub>	9 <sup>1</sup> / <sub>16</sub>	<sup>9</sup> / <sub>16</sub>	1 <sup>1</sup> / <sub>16</sub>	22 <sup>1</sup> / <sub>16</sub>	8 <sup>7</sup> / <sub>16</sub>	24 <sup>3</sup> / <sub>4</sub>	1 <sup>15</sup> / <sub>16</sub>	7 <sup>1</sup> / <sub>16</sub>	<sup>9</sup> / <sub>16</sub>	106	T80D	59

C.W.L.:Continuous Running Water Level  
L.W.L.:Lowest Running Water Level

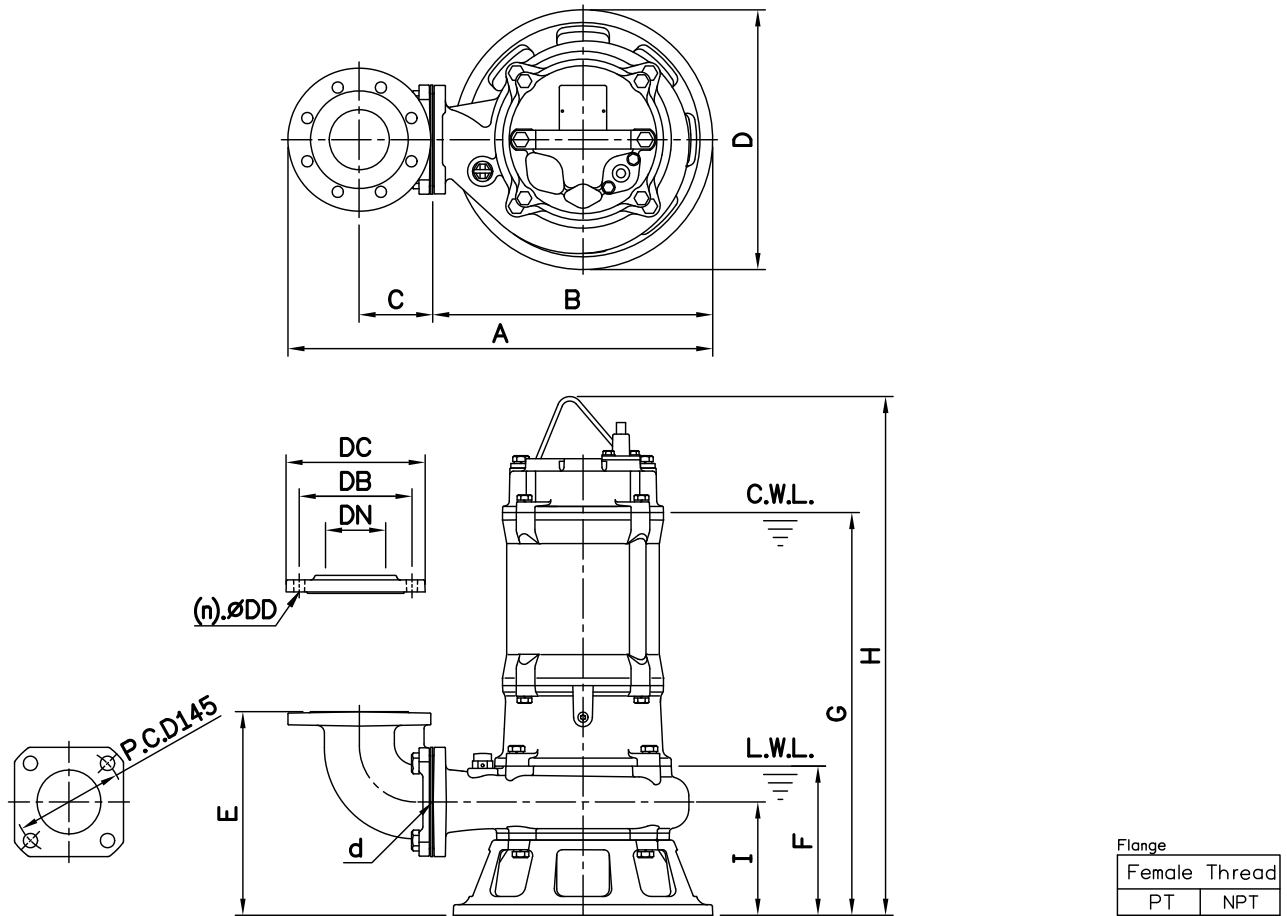
WT1:Pump Weight(Without Cable)  
WT2:GRS Set Weight

## DIMENSIONS

NO: S3AFC275030-00

MODEL: 80(100)AFC25.5 / 27.5

50Hz 3Ø



Dimensions—mm

Weight:kg

Model	d	A	B	C	D	E	F	G	H	I	WT1	Elbow (Flange)Set	DN	DB	DC	DD	(n)QTY	WT2
80(100)AFC25.5	80	565	373	98	345	271	198	590	689	151	75	EB3-150A	80	150	185	15	8	12
80(100)AFC25.5	80	596	373	113	345	282	198	590	689	151	75	EB4-175(145)	100	175	210	15	8	14
80(100)AFC27.5	80	565	373	98	345	271	198	590	689	151	81	EB3-150A	80	150	185	15	8	12
80(100)AFC27.5	80	596	373	113	345	282	198	590	689	151	81	EB4-175(145)	100	175	210	15	8	14

Dimensions—inch

Weight:lb

Model	d	A	B	C	D	E	F	G	H	I	WT1	Elbow (Flange)Set	DN	DB	DC	DD	(n)QTY	WT2
80(100)AFC25.5	3	22¼	14½	3⅞	13⅝	10⅞	7⅞	23¾	27½	5⅞	165	EB3-150A	3	5⅞	7⅞	⅝	8	26
80(100)AFC25.5	3	23⅞	14½	4⅞	13⅝	11⅞	7⅞	23¾	27½	5⅞	165	EB4-175(145)	4	6⅞	8¼	⅝	8	30
80(100)AFC27.5	3	22¼	14½	3⅞	13⅝	10⅞	7⅞	23¾	27½	5⅞	179	EB3-150A	3	5⅞	7⅞	⅝	8	26
80(100)AFC27.5	3	23⅞	14½	4⅞	13⅝	11⅞	7⅞	23¾	27½	5⅞	179	EB4-175(145)	4	6⅞	8¼	⅝	8	30

C.W.L.:Continuous Running Water Level  
L.W.L.:Lowest Running Water Level

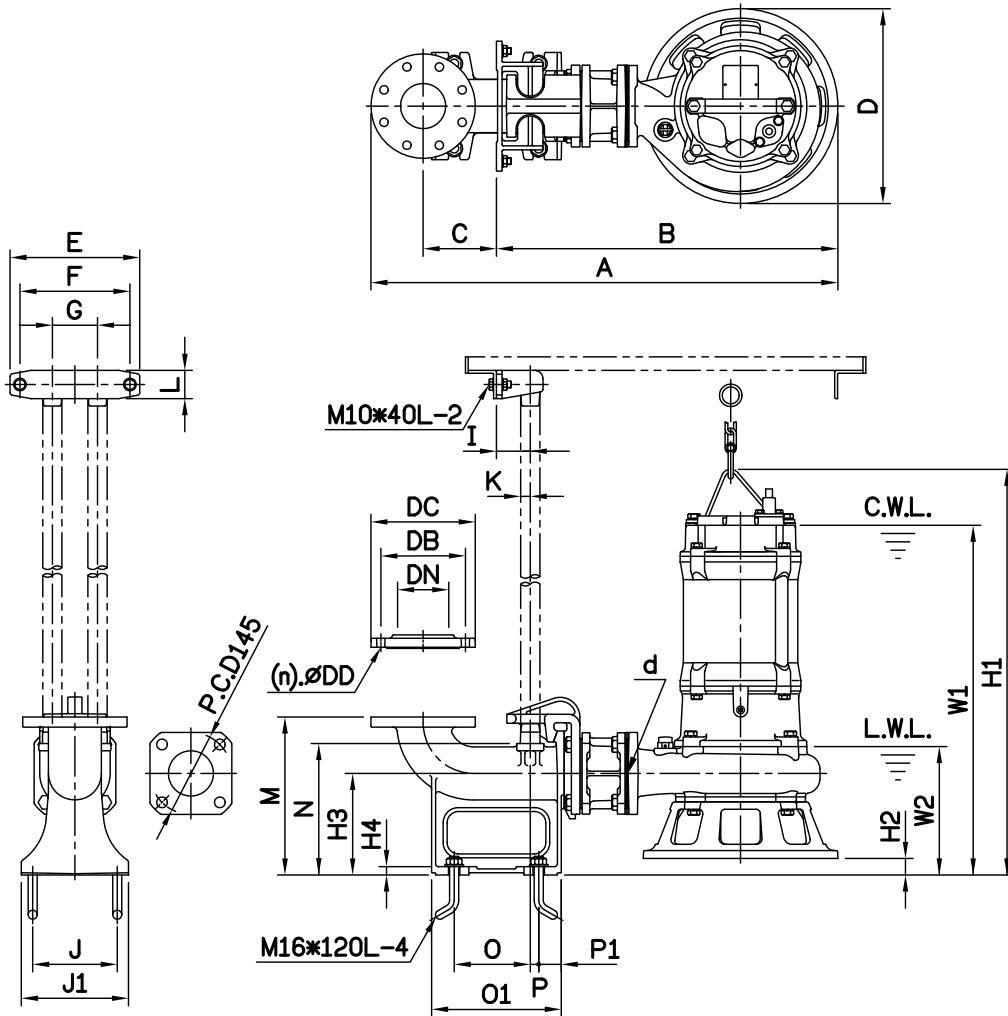
WT1:Pump Weight(Without Cable)  
WT2:Elbow Set Weight

## DIMENSIONS

NO: T3AFC275030-00

MODEL: 80(100)AFC25.5 / 27.5

50Hz 3Ø



Flange	
Female Thread	
PT	NPT

Dimensions—mm

Elbow (Flange) Set	DN	DB	DC	DD	(n)QTY
EF3-150	80	150	185	15	8
EF4-175	100	175	210	15	8

Dimensions—inch

Elbow (Flange) Set	DN	DB	DC	DD	(n)QTY
EF3-150	3	5 <sup>9</sup> / <sub>16</sub>	7 <sup>7</sup> / <sub>16</sub>	<sup>5</sup> / <sub>16</sub>	8
EF4-175	4	6 <sup>7</sup> / <sub>16</sub>	8 <sup>1</sup> / <sub>4</sub>	<sup>5</sup> / <sub>16</sub>	8

Dimensions—mm

Model	d	A	B	C	D	E	F	G	I	J	J1	K	L	M	N	O	O1	P	P1	W1	W2	H1	H2	H3	H4	WT1	Weight:kg	
																											GRS Set	WT2
80(100)AFC25.5	80	828	606	130	345	230	195	80	60	150	190	1 <sup>1</sup> / <sub>4</sub>	50	280	233	135	230	15	40	620	228	719	30	180	15	75	T80DH	31
80(100)AFC25.5	80	860	606	150	345	230	195	80	60	170	210	1 <sup>1</sup> / <sub>4</sub>	50	285	233	155	250	15	40	620	228	719	30	180	15	75	T100(80)BH	34
80(100)AFC27.5	80	828	606	130	345	230	195	80	60	150	190	1 <sup>1</sup> / <sub>4</sub>	50	280	233	135	230	15	40	620	228	719	30	180	15	81	T80DH	31
80(100)AFC27.5	80	860	606	150	345	230	195	80	60	170	210	1 <sup>1</sup> / <sub>4</sub>	50	285	233	155	250	15	40	620	228	719	30	180	15	81	T100(80)BH	34

Dimensions—inch

Model	d	A	B	C	D	E	F	G	I	J	J1	K	L	M	N	O	O1	P	P1	W1	W2	H1	H2	H3	H4	WT1	Weight:lb	
																											GRS Set	WT2
80(100)AFC25.5	3	32 <sup>3</sup> / <sub>8</sub>	23 <sup>3</sup> / <sub>8</sub>	5 <sup>1</sup> / <sub>8</sub>	13 <sup>5</sup> / <sub>16</sub>	9 <sup>1</sup> / <sub>16</sub>	7 <sup>7</sup> / <sub>16</sub>	3 <sup>3</sup> / <sub>8</sub>	2 <sup>3</sup> / <sub>8</sub>	5 <sup>9</sup> / <sub>16</sub>	7 <sup>1</sup> / <sub>2</sub>	1 <sup>1</sup> / <sub>4</sub>	2	11	9 <sup>3</sup> / <sub>16</sub>	5 <sup>5</sup> / <sub>16</sub>	9 <sup>1</sup> / <sub>16</sub>	<sup>9</sup> / <sub>16</sub>	1 <sup>1</sup> / <sub>16</sub>	24 <sup>7</sup> / <sub>16</sub>	9	28 <sup>5</sup> / <sub>16</sub>	1 <sup>1</sup> / <sub>16</sub>	7 <sup>7</sup> / <sub>16</sub>	<sup>9</sup> / <sub>16</sub>	165	T80DH	68
80(100)AFC25.5	3	33 <sup>7</sup> / <sub>8</sub>	23 <sup>3</sup> / <sub>8</sub>	5 <sup>15</sup> / <sub>16</sub>	13 <sup>5</sup> / <sub>16</sub>	9 <sup>1</sup> / <sub>16</sub>	7 <sup>7</sup> / <sub>16</sub>	3 <sup>3</sup> / <sub>8</sub>	2 <sup>3</sup> / <sub>8</sub>	6 <sup>11</sup> / <sub>16</sub>	8 <sup>1</sup> / <sub>4</sub>	1 <sup>1</sup> / <sub>4</sub>	2	11 <sup>1</sup> / <sub>4</sub>	9 <sup>3</sup> / <sub>16</sub>	6 <sup>7</sup> / <sub>16</sub>	9 <sup>3</sup> / <sub>16</sub>	<sup>9</sup> / <sub>16</sub>	1 <sup>1</sup> / <sub>16</sub>	24 <sup>7</sup> / <sub>16</sub>	9	28 <sup>5</sup> / <sub>16</sub>	1 <sup>1</sup> / <sub>16</sub>	7 <sup>7</sup> / <sub>16</sub>	<sup>9</sup> / <sub>16</sub>	165	T100(80)BH	75
80(100)AFC27.5	3	32 <sup>3</sup> / <sub>8</sub>	23 <sup>3</sup> / <sub>8</sub>	5 <sup>1</sup> / <sub>8</sub>	13 <sup>5</sup> / <sub>16</sub>	9 <sup>1</sup> / <sub>16</sub>	7 <sup>7</sup> / <sub>16</sub>	3 <sup>3</sup> / <sub>8</sub>	2 <sup>3</sup> / <sub>8</sub>	5 <sup>9</sup> / <sub>16</sub>	7 <sup>1</sup> / <sub>2</sub>	1 <sup>1</sup> / <sub>4</sub>	2	11	9 <sup>3</sup> / <sub>16</sub>	5 <sup>5</sup> / <sub>16</sub>	9 <sup>1</sup> / <sub>16</sub>	<sup>9</sup> / <sub>16</sub>	1 <sup>1</sup> / <sub>16</sub>	24 <sup>7</sup> / <sub>16</sub>	9	28 <sup>5</sup> / <sub>16</sub>	1 <sup>1</sup> / <sub>16</sub>	7 <sup>7</sup> / <sub>16</sub>	<sup>9</sup> / <sub>16</sub>	179	T80DH	68
80(100)AFC27.5	3	33 <sup>7</sup> / <sub>8</sub>	23 <sup>3</sup> / <sub>8</sub>	5 <sup>15</sup> / <sub>16</sub>	13 <sup>5</sup> / <sub>16</sub>	9 <sup>1</sup> / <sub>16</sub>	7 <sup>7</sup> / <sub>16</sub>	3 <sup>3</sup> / <sub>8</sub>	2 <sup>3</sup> / <sub>8</sub>	6 <sup>11</sup> / <sub>16</sub>	8 <sup>1</sup> / <sub>4</sub>	1 <sup>1</sup> / <sub>4</sub>	2	11 <sup>1</sup> / <sub>4</sub>	9 <sup>3</sup> / <sub>16</sub>	6 <sup>7</sup> / <sub>16</sub>	9 <sup>3</sup> / <sub>16</sub>	<sup>9</sup> / <sub>16</sub>	1 <sup>1</sup> / <sub>16</sub>	24 <sup>7</sup> / <sub>16</sub>	9	28 <sup>5</sup> / <sub>16</sub>	1 <sup>1</sup> / <sub>16</sub>	7 <sup>7</sup> / <sub>16</sub>	<sup>9</sup> / <sub>16</sub>	179	T100(80)BH	75

C.W.L.:Continuous Running Water Level  
L.W.L.:Lowest Running Water Level

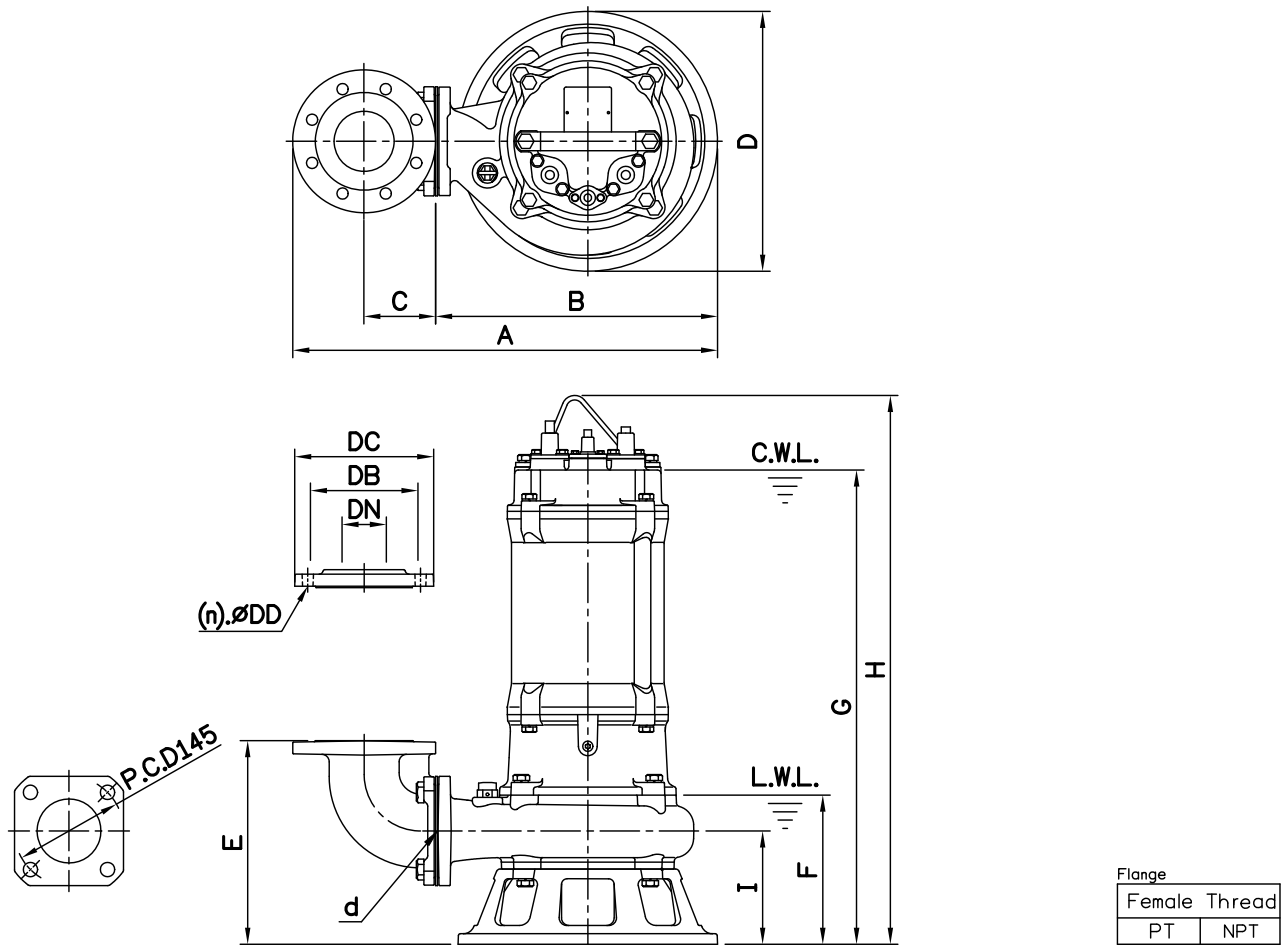
WT1:Pump Weight(Without Cable)  
WT2:GRS Set Weight

## DIMENSIONS

NO: S3AFC2A1030-00

MODEL: 80(100)AFC211

50Hz 3Ø



Dimensions—mm

Weight:kg

Model	d	A	B	C	D	E	F	G	H	I	WT1	Elbow (Flange) Set	DN	DB	DC	DD	(n)QTY	WT2
80(100)AFC211	80	565	373	98	345	271	198	630	729	151	91	EB3-150A	80	150	185	15	8	12
80(100)AFC211	80	596	373	113	345	282	198	630	729	151	91	EB4-175(145)	100	175	210	15	8	14

Dimensions—inch

Weight:lb

Model	d	A	B	C	D	E	F	G	H	I	WT1	Elbow (Flange) Set	DN	DB	DC	DD	(n)QTY	WT2
80(100)AFC211	3	22 <sup>3</sup> / <sub>16</sub>	14 <sup>1</sup> / <sub>16</sub>	3 <sup>7</sup> / <sub>16</sub>	13 <sup>3</sup> / <sub>16</sub>	10 <sup>1</sup> / <sub>16</sub>	7 <sup>7</sup> / <sub>16</sub>	24 <sup>13</sup> / <sub>16</sub>	28 <sup>1</sup> / <sub>16</sub>	5 <sup>1</sup> / <sub>16</sub>	201	EB3-150A	3	5 <sup>15</sup> / <sub>16</sub>	7 <sup>5</sup> / <sub>16</sub>	2 <sup>1</sup> / <sub>16</sub>	8	26
80(100)AFC211	3	23 <sup>7</sup> / <sub>16</sub>	14 <sup>1</sup> / <sub>16</sub>	4 <sup>1</sup> / <sub>16</sub>	13 <sup>3</sup> / <sub>16</sub>	11 <sup>1</sup> / <sub>16</sub>	7 <sup>7</sup> / <sub>16</sub>	24 <sup>13</sup> / <sub>16</sub>	28 <sup>1</sup> / <sub>16</sub>	5 <sup>1</sup> / <sub>16</sub>	201	EB4-175(145)	4	6 <sup>15</sup> / <sub>16</sub>	8 <sup>5</sup> / <sub>16</sub>	2 <sup>1</sup> / <sub>16</sub>	8	30

C.W.L.:Continuous Running Water Level  
L.W.L.:Lowest Running Water Level

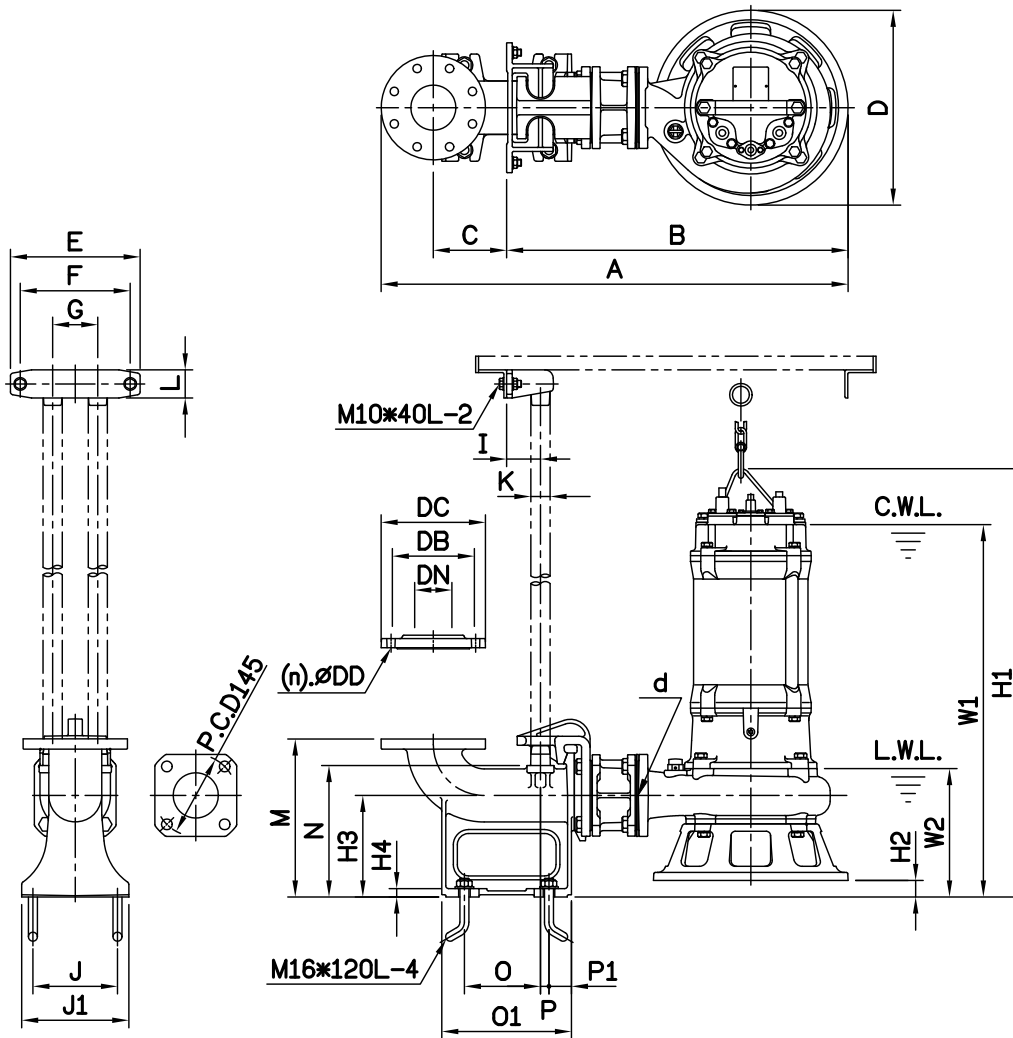
WT1:Pump Weight(Without Cable)  
WT2:Elbow Set Weight

## DIMENSIONS

NO: T3AFC2A1030-00

MODEL: 80(100)AFC211

50Hz 3Ø



Flange	
Female Thread	
PT	NPT

Dimensions—mm

Elbow (Flange) Set	DN	DB	DC	DD	(n)QTY
EF3-150	80	150	185	15	8
EF4-175	100	175	210	15	8

Dimensions—inch

Elbow (Flange) Set	DN	DB	DC	DD	(n)QTY
EF3-150	3	5 <sup>9</sup> / <sub>16</sub>	7 <sup>7</sup> / <sub>16</sub>	<sup>5</sup> / <sub>16</sub>	8
EF4-175	4	6 <sup>7</sup> / <sub>16</sub>	8 <sup>1</sup> / <sub>4</sub>	<sup>5</sup> / <sub>16</sub>	8

Dimensions—mm

Model	d	A	B	C	D	E	F	G	I	J	J1	K	L	M	N	O	O1	P	P1	W1	W2	H1	H2	H3	H4	WT1	Weight:kg	
																											GRS Set	WT2
80(100)AFC211	80	828	606	130	345	230	195	80	60	150	190	1 <sup>1</sup> / <sub>4</sub>	50	280	233	135	230	15	40	660	228	759	30	180	15	91	T80DH	31
80(100)AFC211	80	860	606	150	345	230	195	80	60	170	210	1 <sup>1</sup> / <sub>4</sub>	50	285	233	155	250	15	40	660	228	759	30	180	15	91	T100(80)BH	34

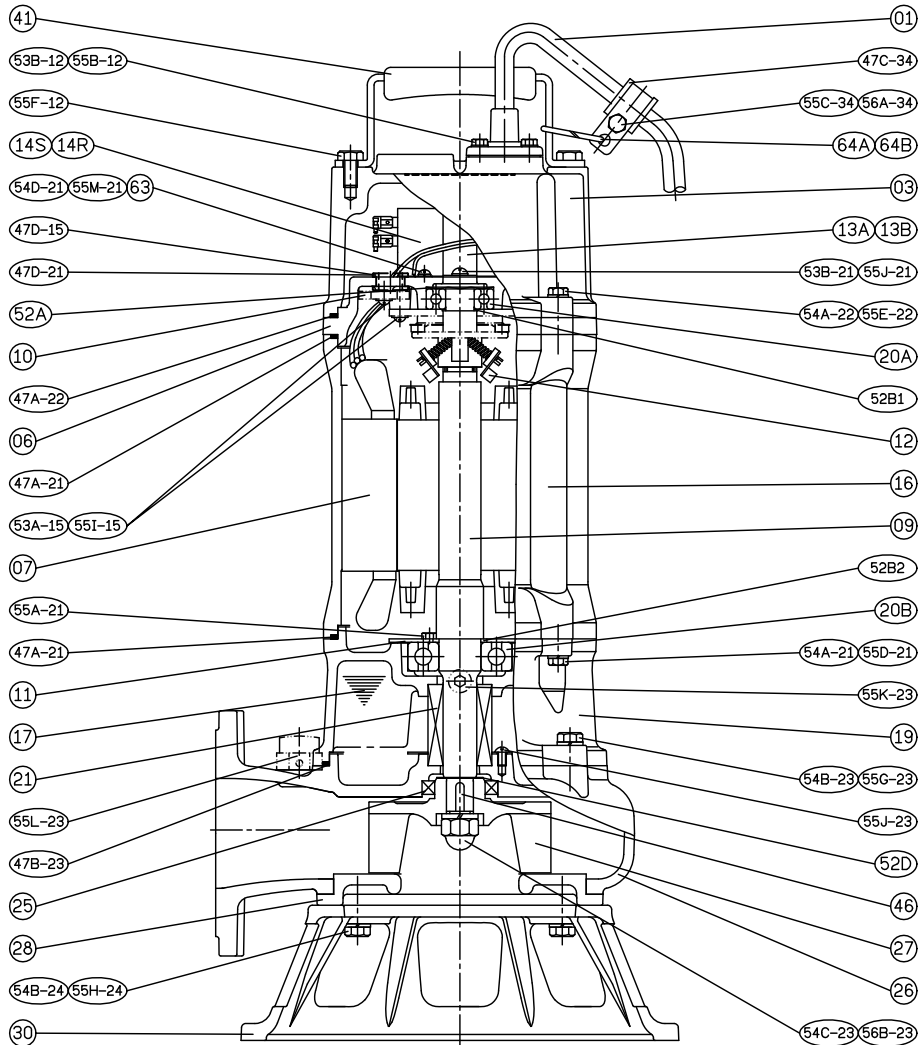
Dimensions—inch

Model	d	A	B	C	D	E	F	G	I	J	J1	K	L	M	N	O	O1	P	P1	W1	W2	H1	H2	H3	H4	WT1	Weight:lb	
																											GRS Set	WT2
80(100)AFC211	3	32 <sup>3</sup> / <sub>8</sub>	23 <sup>7</sup> / <sub>8</sub>	5 <sup>1</sup> / <sub>8</sub>	13 <sup>3</sup> / <sub>8</sub>	9 <sup>1</sup> / <sub>8</sub>	7 <sup>7</sup> / <sub>8</sub>	3 <sup>1</sup> / <sub>8</sub>	2 <sup>3</sup> / <sub>8</sub>	5 <sup>7</sup> / <sub>8</sub>	7 <sup>1</sup> / <sub>2</sub>	1 <sup>1</sup> / <sub>4</sub>	2	11	9 <sup>3</sup> / <sub>8</sub>	5 <sup>5</sup> / <sub>8</sub>	9 <sup>1</sup> / <sub>8</sub>	<sup>9</sup> / <sub>16</sub>	1 <sup>1</sup> / <sub>8</sub>	26	9	29 <sup>3</sup> / <sub>8</sub>	1 <sup>3</sup> / <sub>8</sub>	7 <sup>1</sup> / <sub>8</sub>	<sup>1</sup> / <sub>8</sub>	201	T80DH	68
80(100)AFC211	3	33 <sup>3</sup> / <sub>8</sub>	23 <sup>7</sup> / <sub>8</sub>	5 <sup>1</sup> / <sub>8</sub>	13 <sup>3</sup> / <sub>8</sub>	9 <sup>1</sup> / <sub>8</sub>	7 <sup>7</sup> / <sub>8</sub>	3 <sup>1</sup> / <sub>8</sub>	2 <sup>3</sup> / <sub>8</sub>	6 <sup>1</sup> / <sub>8</sub>	8 <sup>1</sup> / <sub>4</sub>	1 <sup>1</sup> / <sub>4</sub>	2	11 <sup>1</sup> / <sub>4</sub>	9 <sup>3</sup> / <sub>8</sub>	6 <sup>1</sup> / <sub>8</sub>	9 <sup>3</sup> / <sub>8</sub>	<sup>9</sup> / <sub>16</sub>	1 <sup>1</sup> / <sub>8</sub>	26	9	29 <sup>3</sup> / <sub>8</sub>	1 <sup>3</sup> / <sub>8</sub>	7 <sup>1</sup> / <sub>8</sub>	<sup>1</sup> / <sub>8</sub>	201	T100(80)BH	75

C.W.L.:Continuous Running Water Level  
L.W.L.:Lowest Running Water Level

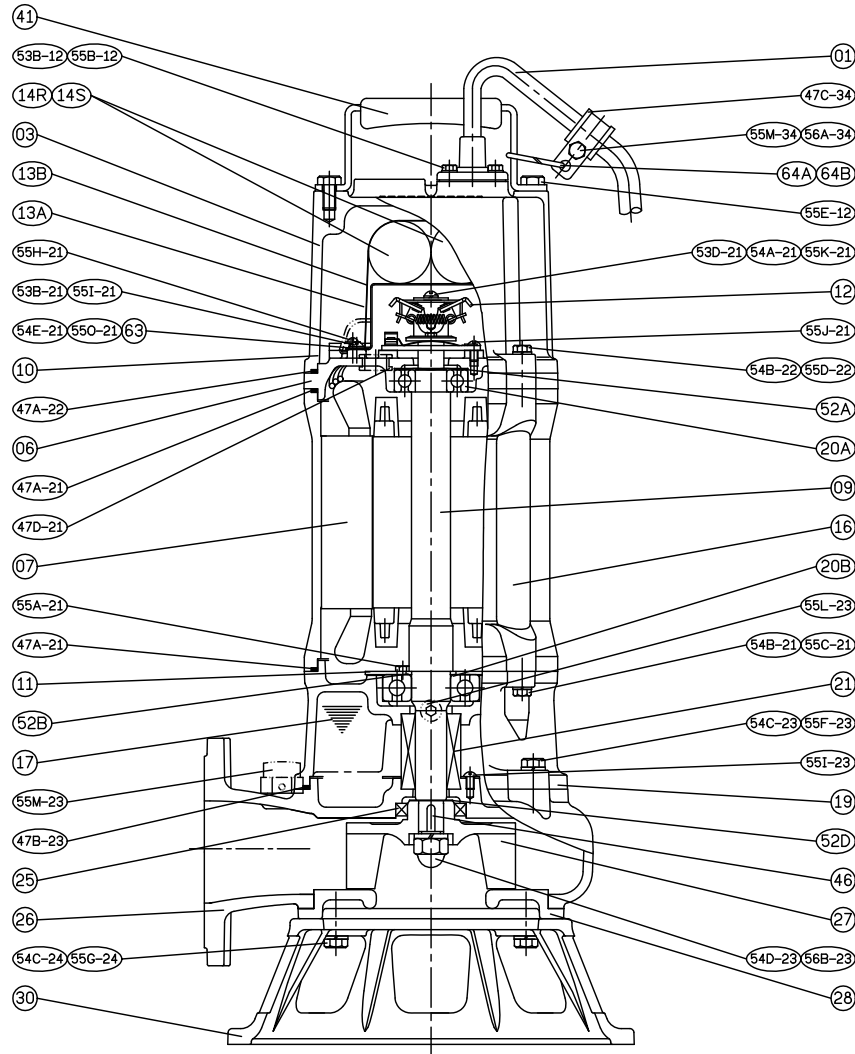
WT1:Pump Weight(Without Cable)  
WT2:GRS Set Weight





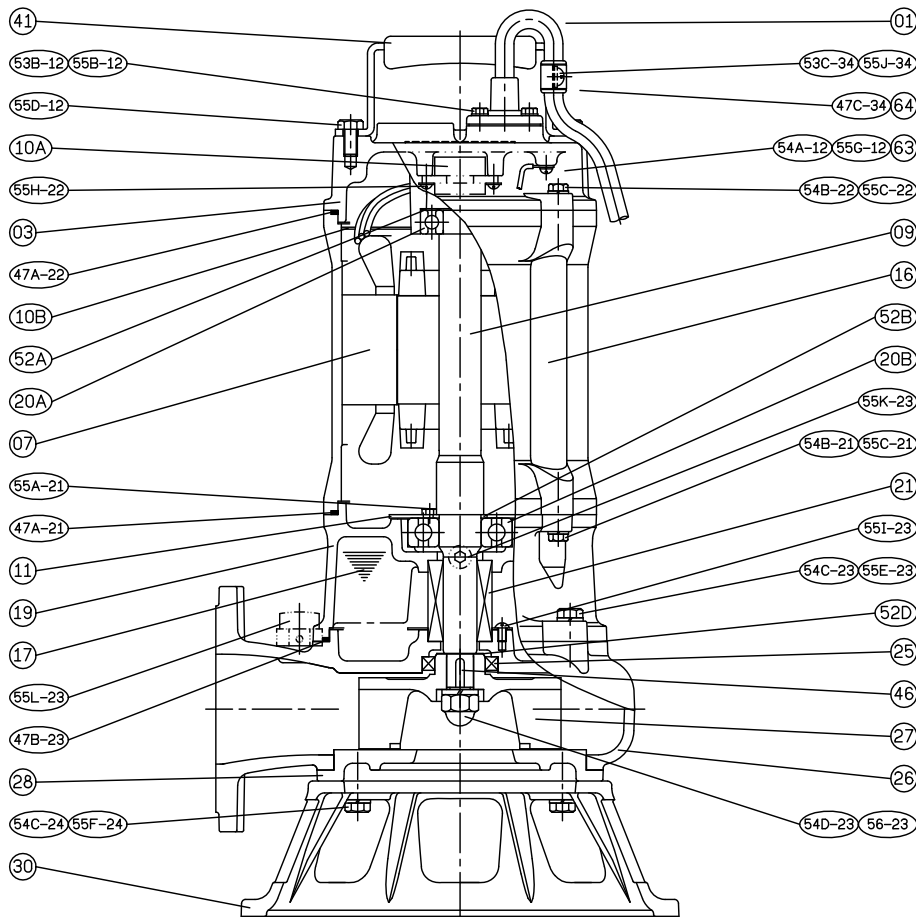
No.	Part name	Material	QTY	Remark
01	Cable		1	
03	Upper cover	FC200	1	
06	Bracket	FC200	1	
07	Stator		1	
09	Shaft end	SUS403	1	
10	Auto-cut Protector		1	
11	Bearing fixer	SPCC	1	
12	Centrifugal switch		1	
14R	Capacitor		1	
14S	Start capacitor		1	
16	Motor frame	FC200	1	
17	Lubricant			
19	Bearing bracket	FC200	1	

No.	Part name	Material	QTY	Remark
20A	Bearing		1	
20B	Bearing		1	
21	M.seal	CA / CE & SIC / SIC	1	
25	Oil seal	NBR	1	
26	Casing	FC200	1	
27	Impeller	FC200+W	1	
28	Casing cover	FC200	1	
30	Footing	FCD450	1	
41	Handle	SUS304	1	
46	Impeller key	SUS304	1	
47	Packing			



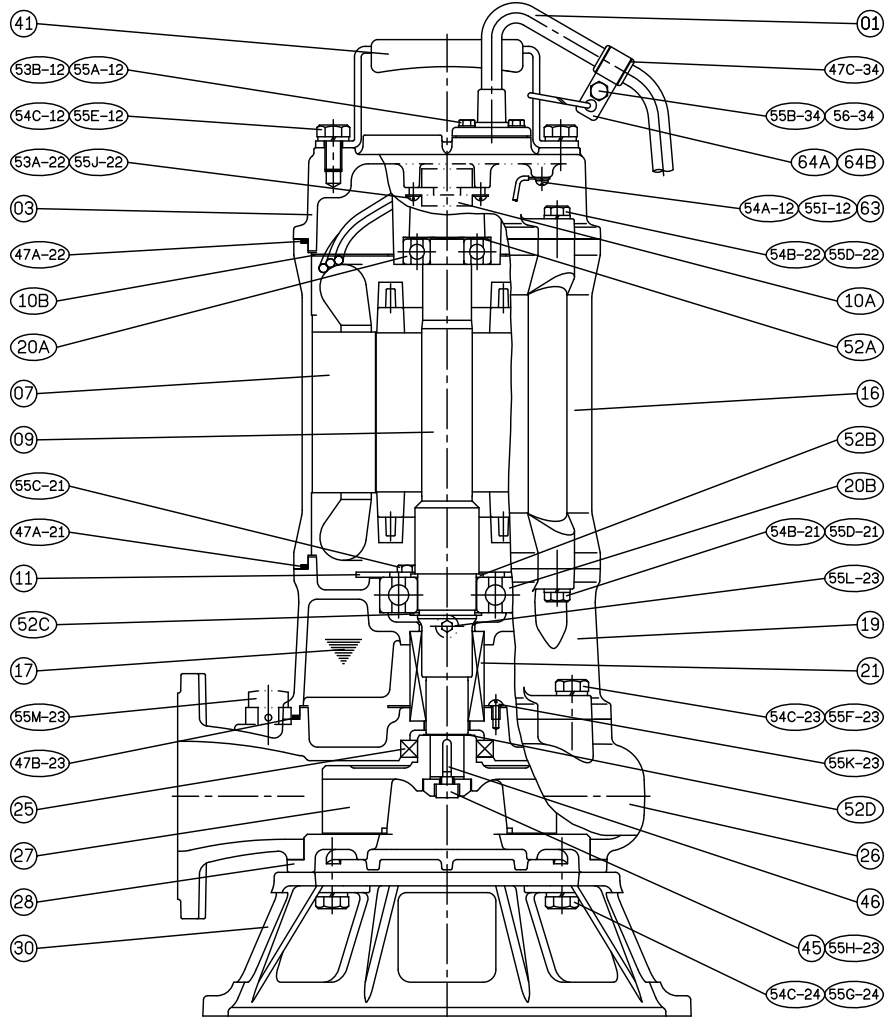
No.	Part name	Material	QTY	Remark
01	Cable		1	
03	Upper cover	FC200	1	
06	Bracket	FC200	1	
07	Stator		1	
09	Shaft end	SUS403	1	
10	Auto-cut Protector		1	
11	Bearing fixer	SPCC	1	
12	Centrifugal switch		1	
14R	Capacitor		1	
14S	Start capacitor		1	
16	Motor frame	FC200	1	
17	Lubricant			
19	Bearing bracket	FC200	1	

No.	Part name	Material	QTY	Remark
20A	Bearing		1	
20B	Bearing		1	
21	M.seal	CA / CE & SIC / SIC	1	
25	Oil seal	NBR	1	
26	Casing	FC200	1	
27	Impeller	FC200+W	1	
28	Casing cover	FC200	1	
30	Footing	FCD450	1	
41	Handle	SUS304	1	
46	Impeller key	SUS304	1	
47	Packing			



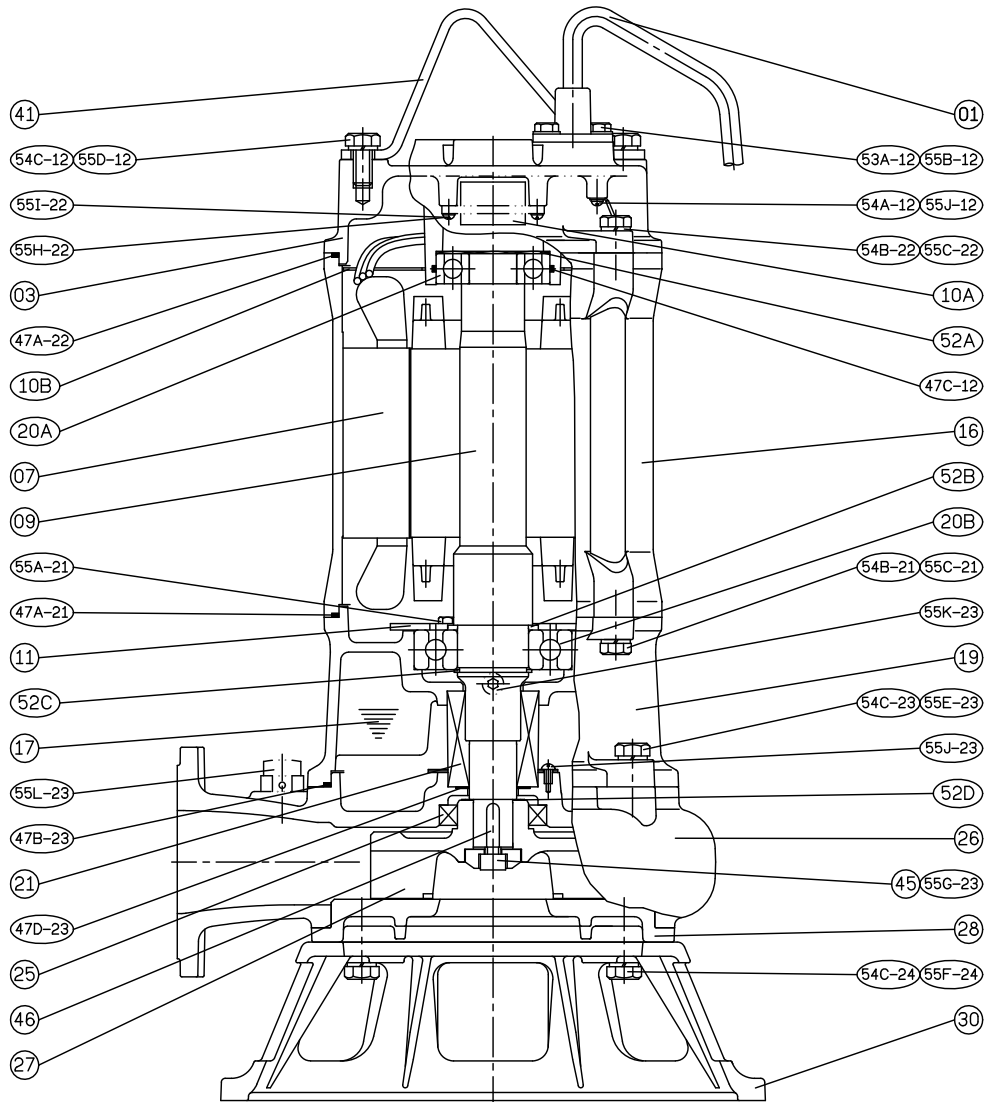
No.	Part name	Material	QTY	Remark
01	Cable		1	
03	Upper cover	FC200	1	
07	Stator		1	
09	Shaft end	SUS403	1	
10A	Auto-cut Protector		1	
10B	Protective Plate		1	
11	Bearing fixer	SPCC	1	
16	Motor frame	FC200	1	
17	Lubricant			
19	Bearing bracket	FC200	1	
20A	Bearing		1	
20B	Bearing		1	
21	M.seal	CA / CE & SIC / SIC	1	

No.	Part name	Material	QTY	Remark
25	Oil seal	NBR	1	
26	Casing	FC200	1	
27	Impeller	FC200+W	1	
28	Casing cover	FC200	1	
30	Footing	FCD450	1	
41	Handle	SUS304	1	
46	Impeller key	SUS304	1	
47	Packing			



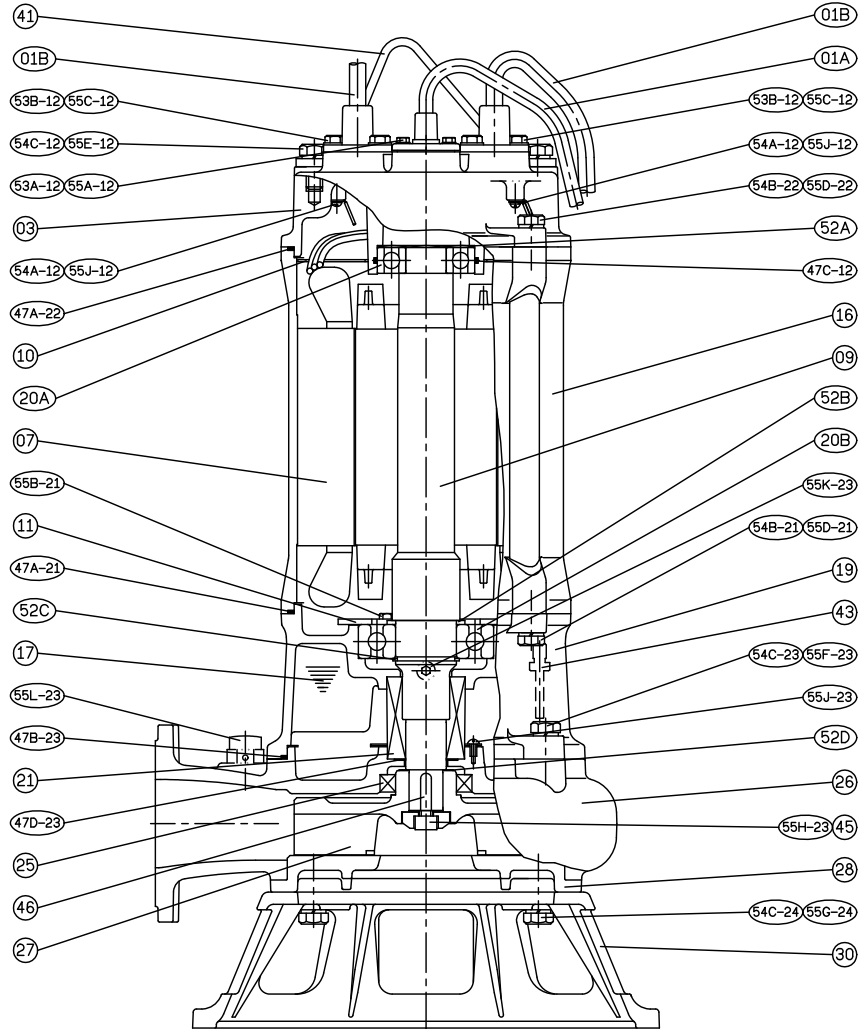
No.	Part name	Material	QTY	Remark
01	Cable		1	
03	Upper cover	FC200	1	
07	Stator		1	
09	Shaft end	SUS403	1	
10A	Auto-cut Protector		1	
10B	Protective Plate		1	
11	Bearing fixer	SPCC	1	
16	Motor frame	FC200	1	
17	Lubricant			
19	Bearing bracket	FC200	1	
20A	Bearing		1	
20B	Bearing		1	
21	M.seal	CA / CE & SIC / SIC	1	

No.	Part name	Material	QTY	Remark
25	Oil seal	NBR	1	
26	Casing	FC200	1	
27	Impeller	FC200+W	1	
28	Casing cover	FC200	1	
30	Footing	FCD450	1	
41	Handle	SUS304	1	
46	Impeller key	SUS304	1	
47	Packing			



No.	Part name	Material	QTY	Remark
01	Cable		1	
03	Upper cover	FC200	1	
07	Stator		1	
09	Shaft end	SUS403	1	
10A	Auto-cut Protector		1	
10B	Protective Plate		1	
11	Bearing fixer	SPCC	1	
16	Motor frame	FC200	1	
17	Lubricant			
19	Bearing bracket	FC200	1	
20A	Bearing		1	
20B	Bearing		1	
21	M.seal	CA / CE & SiC / SiC	1	

No.	Part name	Material	QTY	Remark
25	Oil seal	NBR	1	
26	Casing	FC200	1	
27	Impeller	FC200+W	1	
28	Casing cover	FC200	1	
30	Footing	FCD450	1	
41	Handle	SUS304	1	
46	Impeller key	SUS304	1	
47	Packing			



No.	Part name	Material	QTY	Remark
01	Cable		3	
03	Upper cover	FC200	1	
07	Stator		1	With MTS
09	Shaft end	SUS420J2	1	
10	Protective Plate		1	
11	Bearing fixer	SPCC	1	
16	Motor frame	FC200	1	
17	Lubricant			
19	Bearing bracket	FC200	1	
20A	Bearing		1	
20B	Bearing		1	
21	M.seal	CA / CE & SIC / SIC	1	
25	Oil seal	NBR	1	

No.	Part name	Material	QTY	Remark
26	Casing	FC200	1	
27	Impeller	FC200+W	1	
28	Casing cover	FC200	1	
30	Footing	FCD450	1	
41	Handle	SUS304	1	
43	Moisture sensor		1	
46	Impeller key	SUS304	1	
47	Packing			



Professionalism • Innovation • Service • Commitment

A series of horizontal dotted lines spanning the width of the page, intended for handwritten notes or a list.





Professionalism • Innovation • Service • Commitment

A series of horizontal dotted lines spanning the width of the page, providing a template for handwritten notes or responses.